



Department for Education

# **2013 ADOPTION SCORECARD**

Local Authority Scorecard

September 2013

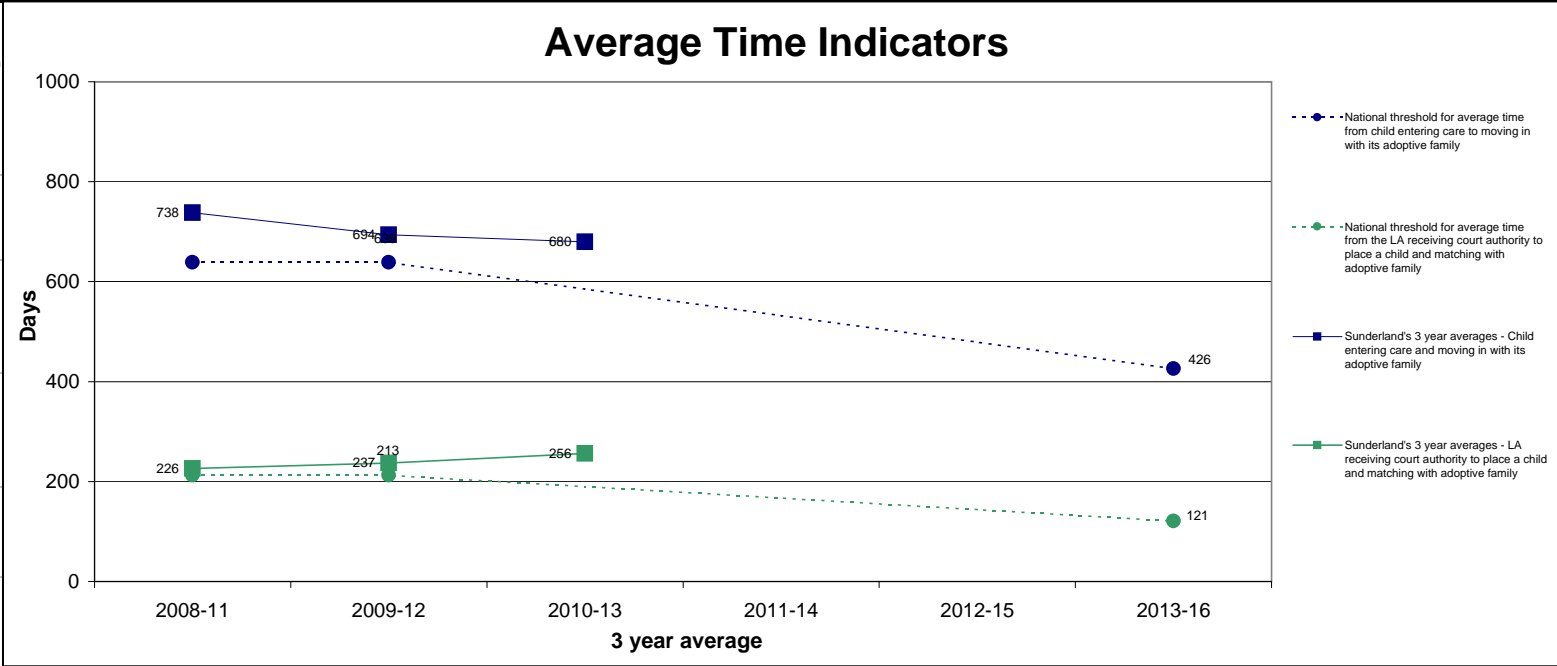
**Children's Services and Departmental Strategy Directorate**

# Adoption Scorecard

Sunderland

## Children

	Average time between a child entering care and moving in with its adoptive family, for children who have been adopted (days)	Average time between a local authority receiving court authority to place a child and the local authority deciding on a match to an adoptive family (days)	Children who wait less than x months between entering care and moving in with their adoptive family (number and %)
LA's 3 year average (2010-13)	680	256	Indicator to be agreed
1 year trend - Improvement from 2012 to 2013	Average time in 2013 was shorter than 2012	Average time in 2013 was shorter than 2012	n/a
3 year trend - Improvement from 2009-12 to 2010-13	Average time in 2010-13 was shorter than in 2009-12	Average time in 2010-13 was longer than in 2009-12	n/a
England 3 year average (2010-13)	647	210	Indicator to be agreed
Distance from 2010-13 performance threshold	Threshold to be agreed	Threshold to be agreed	n/a



## Adopters

	Number of approved adoptive families as at 31 March 2013	Proportion of adoptive families who were matched to a child during 2012-13 who waited more than x months from approval to being matched to a child
LA average	Data not available until November	Data not available until November
England		

## Related Information

	Adoptions from care (number adopted and % leaving care who are adopted)	Number and % of children for whom the permanence decision has changed away from adoption	Average time between a child entering care and moving in with its adoptive family. Where times for children who are adopted by their foster family are stopped at the date the child moved in with the foster family (days)	Adoptions of children from ethnic minority backgrounds (number adopted and % of BME children leaving care who are adopted)	Adoptions of children aged five or over (number adopted and % of children aged 5 or over leaving care who are adopted)	Average length of care proceedings locally (weeks)	Number of children awaiting adoption (as at 31 March 2013)	Number of applications for approval as an adopter still being assessed (not yet approved or rejected) as at 31 March 2013
LA's 3 year average (2010-13)	110 (21%)	35 (16%)	655	x (x%)	40 (11%)	51	45	Data not available until November
England 3 year average (2010-13)	10,540 (13%)	2,020 (9%)	545	1,600 (7%)	2,580 (4%)	51	6,890	

Notes for all indicators

- Percentages have been derived from unrounded numerator and denominator figures.
- Percentages have been rounded to whole numbers but where the numerator was five or less or the denominator was 10 or less, they have been suppressed and replaced by a cross (x).
- Numbers in the related information section of the scorecard are rounded to the nearest 5 children. For confidentiality purposes, numbers from one to five inclusive have been replaced by a cross (x). Where any number is shown as zero (0), the original figure submitted was zero (0).
- The average number of days have been derived from unrounded numerator and denominator figures and are presented rounded to the nearest day.
- The distance from the 2010-13 performance threshold has been derived from unrounded figures and presented rounded to the nearest day. Therefore the difference between the 3 year average and the 2010-13 threshold may not be the same as the distance from the 2010-13 performance threshold.
- Symbols used:
  - x Figures not shown in order to protect confidentiality.
  - .. Not applicable, i.e. no children in the cohort.
  - ... Percentages less than 0.5% but greater than 0%
- All figures exclude children looked after under an agreed series of short term placements.

Notes for individual indicator

	Latest data	Data included in average	When will the next data be available?	Where can I find the numerators and denominators for percentages	Notes
Average time between a child entering care and moving into their adoptive family for children who have been adopted (days)					
Indicator A1	2013	2011 2012 2013	Data for 2014 will be available from Autumn 2014	<a href="#">Link to be provided</a> The number of children who were adopted can be found in table LAE1 of the Looked After Children SFR	<ol style="list-style-type: none"> <li>This indicator includes all children adopted in the period 1 April 2010 to 31 March 2013 that were placed for adoption immediately prior to their adoption.</li> <li>Time is calculated between a child starting to be looked after and their placement for adoption, i.e. the date they move with their adoptive family. Only children with valid data are included.</li> <li>Figures are rounded to the nearest day.</li> </ol>
Average time between a local authority receiving court authority to place a child and the local authority deciding on a match to an adoptive family (days)					
Indicator A2	2013	2011 2012 2013	Data for 2014 will be available from Autumn 2014	Underlying figures are not currently published	<ol style="list-style-type: none"> <li>This indicator includes all children adopted in the period 1 April 2010 to 31 March 2013 that were placed for adoption and on a placement order or freeing order immediately prior to their adoption.</li> <li>Time is calculated between receiving court authority to adopt (granting of placement order/freeing order) and matching with adopters. A time of zero is assigned to children who were matched before court authority was received.</li> <li>Figures are rounded to the nearest day.</li> </ol>
The number and percentage of children who wait less than XX months between entering care and moving in with their adoptive family					
Indicator A3	2013	2011 2012 2013	Data for 2014 will be available from Autumn 2014	Underlying figures are not currently published	<ol style="list-style-type: none"> <li>This indicator includes all children adopted in the period 1 April 2010 to 31 March 2013 that were placed for adoption immediately prior to their adoption and all children with a current adoption plan at 31 March 2013 (excluding those where the decision to adopt has been reversed). When adoption is the preferred option for permanence this is referred to as the adoption plan.</li> <li>Time is calculated between a child starting to be looked after and their placement for adoption, i.e. the date they move in with their adoptive family. Only children with valid data are included. Children are flagged if they waited less than XX months (measured at XXX days) between starting to be looked after and being placed for adoption or had not yet been looked after for XX months at 31 March 2013.</li> <li>The numerator is therefore all adopted children who were placed for adoption first who were placed less than XX months after becoming looked after and all children looked after at 31 March 2013 with a current adoption decision who were placed less than XX months after becoming looked after or who had not yet been looked after for XX months.</li> <li>The denominator is therefore all adopted children who were placed for adoption first and all looked after at 31 March with a current adoption decision.</li> </ol>
The number of approved adoptive families					
Indicator A11	2013			<a href="http://www.ofsted.gov.uk/resources/adoption-quality-assurance-and-data-form-2012-13">http://www.ofsted.gov.uk/resources/adoption-quality-assurance-and-data-form-2012-13</a> Data yet to be published. The number of approved adoptive families can be found in section B1.1	
The percentage of adoptive families matched to a child who waited at least XX months from approval to being matched					
Indicator A12	2013		2013	<a href="http://www.ofsted.gov.uk/resources/adoption-quality-assurance-and-data-form-2012-13">http://www.ofsted.gov.uk/resources/adoption-quality-assurance-and-data-form-2012-13</a> Data yet to be published. The number of families waiting by time categories from approval to match can be found in section B3	
Adoptions from care (number adopted and percentage leaving care who are adopted)					
Indicator A4	2013	2011 2012 2013	Data for 2014 will be available from Autumn 2014	<a href="#">Link to be provided</a> The number of children leaving care can be found in table LAD1 and the number of children who were adopted can be found in table LAE1 of the Looked After Children SFR	<ol style="list-style-type: none"> <li>Only the last occasion on which a child ceased to be looked after in each year has been counted. A child who ceased to be in care in more than one year will be counted more than once.</li> <li>This indicator compares the number of children who ceased to be looked after in the period 1 April 2010 to 31 March 2013 with the number of children who were adopted during that period.</li> </ol>
The number and percentage of children for whom the permanence decision has changed away from adoption					
Indicator A5	2013	2011 2012 2013	Data for 2014 will be available from Autumn 2014	Underlying figures are not currently published	<ol style="list-style-type: none"> <li>The denominator includes all children with an ongoing adoption decision in the period 1 April 2010 to 31 March 2013. (The adoption decision date may be prior to 1 April 2010.) The numerator includes all children with an ongoing adoption decision in the period 1 April 2010 to 31 March 2013 for whom the decision was reversed in the period 1 April 2010 to 31 March 2013.</li> </ol>
Average time between a child entering care and moving in with its adoptive family adjusted for foster carer adoptions, for children who have been adopted (days)					
Indicator A10	2013	2011 2012 2013	Data for 2014 will be available from Autumn 2014	<a href="#">Link to be provided</a> The number of children who were adopted can be found in table LAE1 of the Looked After Children SFR	<ol style="list-style-type: none"> <li>This indicator includes all children adopted in the period 1 April 2010 to 31 March 2013 that were placed for adoption immediately prior to their adoption.</li> <li>This indicator includes the same children as indicator A1 and the average time is calculated in the same way for children who are not adopted by their foster carers i.e. time is calculated between a child starting to be looked after and their placement for adoption (the date they move with their adoptive family). However the average time for children who are adopted by their foster carers is calculated differently to A1. Where children are adopted by their foster carer, the time is measured until the date they moved in with their foster carer. Only children with valid data are included.</li> <li>Figures are rounded to the nearest day.</li> </ol>
The percentage of black and minority ethnic children leaving care who are adopted					
Indicator A6	2013	2011 2012 2013	Data for 2014 will be available from Autumn 2014	2011 data: <a href="http://www.education.gov.uk/childrenandyoungpeople/families/adoption/b076713/datasack">http://www.education.gov.uk/childrenandyoungpeople/families/adoption/b076713/datasack</a>	<ol style="list-style-type: none"> <li>Only the last occasion on which a child ceased to be looked after in the year has been counted.</li> <li>The numerator includes all children with a known ethnicity of Asian, Black, Chinese, Mixed or Other who were adopted in the period 1 April 2010 to 31 March 2013. The denominator includes all children within these ethnic groups who ceased to be looked after for any reason in the same time period. Numerators and denominators exclude all children where ethnicity was refused or not obtained.</li> <li>Percentages show the proportion of all black and minority ethnic children leaving care who are adopted. Therefore if a local authority has a low proportion of black and minority ethnic children in their care population then the denominator will reflect this low number.</li> </ol>
The percentage of children aged 5 or over leaving care who are adopted					
Indicator A7	2013	2011 2012 2013	Data for 2014 will be available from Autumn 2014	2011 data: <a href="http://www.education.gov.uk/childrenandyoungpeople/families/adoption/b076713/datasack">http://www.education.gov.uk/childrenandyoungpeople/families/adoption/b076713/datasack</a>	<ol style="list-style-type: none"> <li>Only the last occasion on which a child ceased to be looked after in the year has been counted.</li> <li>Age on leaving care.</li> <li>The numerator includes all children who were adopted in period 1 April 2010 to 31 March 2013 who were aged 5 or over. The denominator includes all children who were aged 5 or over when they ceased to be looked after in the same time period.</li> </ol>
Average length of care proceedings locally (weeks)					
Indicator A8	2013	2011 2012 2013	Data for 2014 will be available from Autumn 2014	Figures are currently not publicly available	<ol style="list-style-type: none"> <li>Figures are provided from the Cafcass National Case Management System (CMS). CMS is a live system and any late entries will be accounted for at the time of release of subsequent updates to this data.</li> <li>The unit of measurement is a care application. An application can involve multiple children.</li> <li>Care application duration is calculated from date of care application to the court to date application completed on CMS. Averages are based on care applications completed in the period.</li> <li>The average length of care proceedings locally includes all care proceedings which the local authority has initiated, including care proceedings which take place in courts outside of the local authority area.</li> <li>2012-13 data captured as at 15 June 2013, 2011-12 data captured as at 2nd July 2012 and 2010-11 data captured as at 9 September 2013.</li> </ol>
Number of children awaiting adoption					
Indicator A9	2013		2013	Data for 2014 will be available from Autumn 2014	Underlying figures are not currently published
Number of applications to be an adopter still being assessed as at 31st March 2013					
Indicator A13	2013		2013	<a href="http://www.ofsted.gov.uk/resources/adoption-quality-assurance-and-data-form-2012-13">http://www.ofsted.gov.uk/resources/adoption-quality-assurance-and-data-form-2012-13</a> Data yet to be published. The number of applications still to be assessed can be found in section B2.4	

Adoption Scorecard