

CORPORATE PARENTING BOARD

AGENDA

Meeting to be held in the Civic Centre (Committee Room No. 6) on Monday, 3 February 2014 at 5.30 p.m.

Part I

ITEM		PAGE
1.	Apologies for Absence	-
2.	Declarations of Interest	-
3.	Minutes of Meeting held on 9 July 2013 and 14 October 2013 (Copy attached).	1
4.	Draft Work Plan for the Corporate Parenting Board Report of the Head of Safeguarding (copy attached).	11
5.	Performance Update including Adoption Scorecard Report of the Executive Director of People Services (Copy attached)	13
6.	Pathway Plans Discussion item.	-

Local Government (Access to Information) (Variation Order) 2006

The following items are not for publication as the Board is likely to exclude the public during consideration thereof as they contain information relating to any individual, or information which is likely to reveal the identity of an individual (Local Government Act 1972, Schedule 12A, Part I, Paragraphs 1 and 2).

Part II

- | | | |
|----|---|----|
| 7. | Minutes – Part II | 23 |
| | Minutes of Meeting held on 9 July 2013, Part II and
14 October 2013, Part II | |
| | (Copy attached) | |
| 8. | Regulation 33 Reports | 29 |
| | Report of the Executive Director of People Services | |
| | (Copy attached) | |
| 9. | Ofsted Inspections of Children’s Homes | 35 |
| | Report of the Executive Director of People Services | |
| | (Copy attached) | |

ELAINE WAUGH
Head of Law and Governance

Civic Centre
SUNDERLAND

24 February 2014

Corporate Parenting Board

**Minutes of the Meeting held on Tuesday 9 July 2013 in
Committee Room No. 6, Civic Centre, Sunderland at 5.30p.m.**

Present

Councillor Stewart
Councillor Lawson
Councillor Williams

Members of the Board

Redhill Ward
Shiney Row Ward
Washington Central Ward

Young People

Kieran Boyce
Daniel Bensley

Change Council
Change Council

Also in Attendance

Councillor Davison
Councillor Price

Redhill Ward
Millfield Ward

All Supporting Officers

Denise Moore
Fay Wearmouth
Lynne Goldsmith
Sharon Willis

Assistant Head of Safeguarding,
Children's Services
Social Worker, Children's Services
Senior Manager, Children's Services
Acting Operations Manager of
Childrens' Homes

Welcome to the new Corporate Parenting Board

Members of the Board would recall that the Council, at its meeting on 15 May 2013 agreed that following a review of the make-up of the Corporate Parenting Board, it would be amended to comprise two members of Scrutiny

Committee and the Chairs from each of the five People Boards, as well as the Lead Member and Policy Lead for Children's Services.

It was considered that this would actively promote Corporate Parenting responsibilities of Elected Members across the Council. The review also recommended that all other Elected Members should be invited as participant observers to the Corporate Parenting Board, as all Members had corporate parenting responsibilities.

It was confirmed that an email had been circulated to all Members of the Council inviting them to attend future meetings of the Corporate Parenting Board, to be held on the following dates at 5.30pm in Committee Room 6:-

- Tuesday 9 July 2013
- Monday 14 Oct 2013
- Monday 3 Feb 2014
- Monday 7 April 2014

Apologies for Absence

Apologies for absence were submitted to the meeting on behalf of Councillors P. Smith, Emerson, Macknight, Atkinson, Shattock and Meg Boustead.

Declarations of Interest

There were no declarations of interest.

Minutes of the meeting on 8 April 2013

1. RESOLVED that the minutes of the meeting held on 8 April 2013 (copy circulated) be agreed and signed as a correct record, subject to an amendment to the date on the top of the first page of the minutes.

Adoption Diagnostic

The Head of Safeguarding submitted a report updating the Corporate Parenting Board on the outcome of the Adoption Diagnostic carried out by Core Assets and BAAF in April 2013 and to provide members with the draft action plan.

The Assistant Head of Safeguarding advised the Board that in April 2013, Core Assets/BAAF were invited to undertake an Adoption Diagnostic Assessment in Sunderland. The Primary focus of the diagnostic was to concentrate on the start of the performance/adoption process with a subsidiary aim of challenging the whole journey timescales in order to identify where delay arose.

At the end of the diagnostic the assessors presented their key findings to senior managers and the Portfolio Holder for Children's Services. An initial action planning session was held immediately after the presentation, which informed the subsequent draft action plan.

A copy of the Adoption Diagnostic Assessment was attached at Appendix 1 of the report and an Action Plan was attached as Appendix 2.

Members were advised that the Action Plan was centred around four key areas: -

- Vision Strategy and Leadership
- Managing Resources
- Assessment and Planning
- Family Finding and Matching

Councillor Stewart enquired if an update could be provided on the family finder vacancy. The Assistant Head of Safeguarding responded advising that the job profile had been undertaken and that it was hoped recruitment would take place in July 2013.

Councillor Williams enquired if the previous postholder had moved on, and if so, had been any gap in service. The Assistant Head of Safeguarding explained she did not have the information to hand, however agreed to produce an update for the Board.

Upon consideration of the information presented, it was:-

2. RESOLVED to note the contents of the report and receive further updates as appropriate.

Draft Corporate Parenting Board Annual Report 2012-2013

The Executive Director of Children's Services submitted a report to engage the Corporate Parenting Board in the production of the annual report which would be submitted to Scrutiny Committee in September 2013.

The Assistant Head of Safeguarding referred the Board to each individual section of the report and each one was considered in turn.

An opportunity was then presented for the Board to ask questions and raise any comments.

In relation to Section 3 entitled 'Where were our looked after children living on March 31st 2013?' Councillor Stewart referred to there being 18 private residential children's homes outside the local authority, and enquired what the rationale was behind those particular homes.

The Assistant Head of Safeguarding responded and in doing so explained that a number of young people had complex disabilities or an extreme need that required external placement. Also, children under the age of twelve years old were required to be in private residential care. The Assistant Head of Safeguarding acknowledged that an explanation of these reasons should be included.

Councillor Stewart enquired in relation to 'Children and Young People's Views' what was done to increase responses. The Assistant Head of Safeguarding advised that responses were obtained from various sources including the Viewpoint Software, Social Workers and Looked After Children Reviews. Young people were encouraged to share their views, however the 4-6 year old children were not as interested in sharing and that was described.

Councillor Williams referred to the areas for development within Section 5, where it was stated that seven to nine year olds expressed negative responses when asked about whether they could see their family when they wanted to; that their social worker spoke about their future and only 25% of looked after children had a life story book or sufficient information about the people they knew. Councillor Williams commented that the quality of the life story book was excellent and that she had found the comments surrounding areas for development disappointing.

Moving on to 'Children Living in Stable Placements', Councillor Price stated that it would be useful if a breakdown of age groups was made available to determine the longevity of young people living in placements.

In relation to 'How well do looked after children do at school', Councillor Stewart enquired how much work was undertaken in relation to expectations and breaking that down to ascertain if children should have achieved more. The Assistant Head of Safeguarding stated that schools were good at maintaining home to school contact. The Virtual School also monitored education through each individual child's Personal Education Plan.

Councillor Williams enquired in relation to 'Staying out of trouble' if the Authority was convinced that looked after children who got themselves into trouble were dealt with in the same way as other children. The Assistant Head of Safeguarding responded advising that the Authority did not want to criminalise children and confirmed that police intervention was only ever called when staff in the home agreed that it was necessary.

Councillor Williams referred to the length of time that was generally taken to match children with a family and enquired if that was what happened to take Sunderland the most time. The Assistant Head of Safeguarding responded advising that preparation time was certainly something that Sunderland spent considerable time getting right. She pointed out that this could take longer in some circumstances, for example if a case involved siblings, as Sunderland preferred not to split siblings and instead tried to place siblings together.

Having challenged and commented on the report, it was:-

3. RESOLVED to note the contents of the report and receive further updates as appropriate.

Corporate Parenting Board Planning and Development Session

Councillor Stewart stated that he had recently met with the Head of Safeguarding to discuss the manner in which future meetings of the Corporate Parenting Board could be conducted.

The outcome of the meeting was to introduce a Corporate Parenting Board Planning and Development session. The purpose of the session would be to look at Corporate Parenting Board priorities for the year ahead and agree a main theme for each quarterly meeting. The quarterly meetings would then follow a more structured approach, focus on specific topics and allow in-depth discussions to take place.

A draft agenda for the Corporate Parenting Board Development Session had been produced and was circulated for Board Members' information.

It was proposed that the Corporate Parenting Board Planning and Development Session be held on Thursday 5 September 2013 at 5.00pm. It was confirmed that the young people from the Change Council would be in attendance with hopefully as many Councillors as possible to agree future Corporate Parenting Board priorities. The meeting would also be a useful opportunity to raise any training issues.

Councillor Stewart requested that a reminder be circulated to all Members and stated that an agenda would be circulated in due course. The Governance Services Officer in attendance agreed to send to an email reminder to Members.

Upon consideration, it was: -

4. RESOLVED to proceed with a Corporate Parenting Board Development Session on the 5 September 2013.

Local Government (Access to Information) (Variation) Order 2006

At the instance of the Chairman, it was: -

5. RESOLVED that in accordance with the Local Government (Access to Information) (Variation) Order 2006 the public be excluded during consideration of the remaining business as it was considered to involve a likely disclosure of information relating to an individual, or information which was likely to reveal the identity of an individual (including the Authority holding

that information) (Local Government Act 1972, Schedule 12A, Part I, Paragraphs 1 and 2).

(Signed) P. SMITH
Chairman

Note:-

The above minutes relate only to items considered during the time which the meeting was open to the public.

Additional minutes in respect of other items are included in Part II.

Corporate Parenting Board

**Minutes of the Meeting held on Monday 14 October 2013 in
Committee Room No. 6, Civic Centre, Sunderland at 5.30p.m.**

Present

Councillor P. Smith
Councillor Shattock
Councillor Emerson

Members of the Board

Silksworth Ward
Southwick Ward
Ryhope Ward

Young People

Kieran Boyce

Change Council

Also in Attendance

Councillor Macknight
Councillor D. Smith
Councillor Davison
Councillor D. Trueman
Councillor Porthouse

Castle Ward
Copt Hill Ward
Redhill Ward
Washington West Ward
St. Chad's Ward

All Supporting Officers

Denise Moore

Fay Wearmouth
Lynne Goldsmith
Sharon Willis

Assistant Head of Safeguarding,
Children's Services
Social Worker, Children's Services
Senior Manager, Children's Services
Acting Operations Manager of
Childrens' Homes

Apologies for Absence

Apologies for absence were submitted to the meeting on behalf of Councillors Stewart, Lawson L. Williams and Meg Boustead. Apologies were also submitted by Change Council Members Daniel Bensley, Billy Hardy and Dylan Murray. Councillors Ball and A. Hall also submitted apologies.

Declarations of Interest

There were no declarations of interest.

Minutes of the meeting on 9 July 2013

8. RESOLVED that the minutes of the meeting held on 9 July 2013 (copy circulated) be ratified at the next meeting scheduled to be held on 3 February 2014.

Draft Work Plan

The Assistant Head of Safeguarding submitted a report which outlined proposed discussion topics for future meetings of the Corporate Parenting Board.

These were outlined as follows:-

- | | | |
|-----------------|---|--|
| - October 2013 | - | Education Attainment |
| - February 2014 | - | Pathway Plans and young people's views on care/mental health of young people |
| - April 2014 | - | Perceptions of young people |
| | - | Promotion of contact between siblings |
| - July 2014 | - | Annual performance report/adoption performance |

Members were invited to make any comments or ask questions on the proposed discussion topics. None were forthcoming, therefore it was agreed to:

9. RESOLVED to note the Draft Work Plan.

Local Government (Access to Information) (Variation) Order 2006

At the instance of the Chairman, it was: -

10. RESOLVED that in accordance with the Local Government (Access to Information) (Variation) Order 2006 the public be excluded during consideration of the remaining business as it was considered to involve a likely disclosure of information relating to an individual, or information which was likely to reveal the identity of an individual (including the Authority holding that information) (Local Government Act 1972, Schedule 12A, Part I, Paragraphs 1 and 2).

(Signed) P. SMITH
Chairman

Note:-

The above minutes relate only to items considered during the time which the meeting was open to the public.

Additional minutes in respect of other items are included in Part II.

CORPORATE PARENTING BOARD WORK PLAN 2013/14

FOCUS AREA	HOW CORPORATE PARENTING BOARD WILL LOOK AT IT	WHEN	WHO IS THE LEAD?
Education Attainment	<ol style="list-style-type: none"> 1. Virtual school and young people – joint presentation including young people’s news on education 2. Highlight performance report/scorecard 	October/	Dawn Shearsmith (Virtual Headteacher)
Pathway Plans and young people’s views on care/mental health of young people	<ol style="list-style-type: none"> 1. Young people and leaving care service present pathway planning process 2. Care evaluation survey 3. NTW presentation 4. Performance scorecard 	February 2014	Denise Moore (Assistant Head of Children’s Safeguarding)
Perceptions of young people Promotion of contact between siblings	<ol style="list-style-type: none"> 1. Look at what the Youth Offending Service do to enhance/improve public perceptions of young people 2. Feedback from young people on sibling contact 3. Performance scorecard 	April 2014	Louise Hill/Sharon Clutton-Dowell (YOS)
Annual performance report/adoption performance	<ol style="list-style-type: none"> 1. Annual performance report 2. Adoption performance and annual report 3. Corporate Parenting annual report for Scrutiny 	July 2014	Meg Boustead (Head of Children’s Safeguarding)

CORPORATE PARENTING BOARD

3 February 2014

ADOPTION PERFORMANCE SCORECARD

REPORT OF THE EXECUTIVE DIRECTOR OF PEOPLE SERVICES

1. Purpose

Sunderland has had a long term commitment to promoting adoption for children who cannot grow up within their own birth families. This includes children with a wide range of needs, including older children, larger sibling groups, disabled children and children with significant health needs.

2. Adoption Performance Scorecard

In May 2012 the Department for Education introduced the Adoption Performance Scorecard, with two new indicators which were intended to provide more outcome focused measures for the adoption process.

These 2 indicators focus on:

A1. The “Whole Journey”; from entering care to being placed for adoption

A2. The “Family Finding” process; the time between the Council having the authority to place and the child moving in with the adoptive family.

In 2013 a new indicator; A3, was introduced, to measure the percentage of children who wait for less than 14 months between entering care and being placed for adoption.

The 3 scorecard targets for 2013 -16 are:

- A1: average time between a child entering care and moving in with its adoptive family, for children who have been adopted. The target for the 2013 to 2016 average (as measured during the 3 years 2013 to 2016) is 14 months
- A2: average time between a local authority receiving court authority to place a child and the local authority deciding on a match to an adoptive family. The target for the 2013 to 2016 average (as measured during the 3 years 2013 to 2016) is 4 months
- A3: measures the number and percentage of children who wait less than 14 months between entering care and moving in with their adoptive family (2013 to 2016)

3. National Picture

- The third set of adoption scorecards, covering financial years 2010 to 2013, were published on 14 January 2014. They demonstrate that, despite the increased focus on adoption timescales, nationally there has been no overall improvement in timeliness since the 2009 to 2012 scorecards were published in May 2012. The thresholds have been up-rated this year and only 36 Councils

met both of the revised thresholds. 65 Councils, including Sunderland, failed to meet both thresholds.

4. Sunderland's overall Adoption Performance

- Sunderland's overall performance in relation to adoption remains strong, with 35 children adopted from care in the year between April 2012 and March 2013. This was below the total for 2011/12 when a record 48 children were adopted from care, but is still above the number adopted in 2009/10 and 2010/11.
- Over the 2013 year period 2010/2013 adoptions accounted for 21% of children leaving care in Sunderland, significantly above the national average of 13%. Over the 3 year period 110 Sunderland children left care through adoption.
- The national average for the proportion of children aged over 5 years who leave care through adoption is 4%; in Sunderland this figure was 11% (40 children) over the 3 years 2010 -13. Across the North East Region Sunderland had the highest percentage of children age 5 and over leaving care through adoption.

5. Adoption Scorecard; Sunderland's position 2010/13

- In 2012 it was recognised that it would take time for Sunderland's adoption timescale performance to be turned round. As the measures span a 3 year period much of the timescale performance currently being reported upon relates to practice prior to 2010.
- In the Corporate Parenting Annual Report presented to Scrutiny Committee in September 2013 it was recognised that, from the data available at that time, the length of Family Finding in 2012 -13 was longer than in previous years, which would lead to the 3 years average moving further from the national threshold. It was also recognised that although the 3-year average for the "Whole Journey" was expected to improve for 2012/13 performance, it would still be above the threshold.

6. The Whole Journey - Average time between a child entering care and moving in with their adoptive family (days)

- The "Whole Journey" to Adoption reduced to 660 days during the year April 2012 to March 2013. Although this was an improvement of 26 days on Sunderland's 12 performance, this still remains below the national average. The 3 year performance was 680, an improvement of days on the 2009/12 performance of 695 days in 2009/12 and 738 days in 2008/11, but still 74 days outside the target.

7. Family Finding - Average time between a local authority receiving court authority to place a child and the local authority deciding on a match to an adoptive family (days)

- The time taken for matching a child to an adoptive family after the court granted a Placement Order for the child increased in 2012/13 , which resulted in the overall 2011/13 performance deteriorating to 256 days, 74 days longer than the target.



2013 ADOPTION SCORECARD

Local Authority Scorecard

September 2013

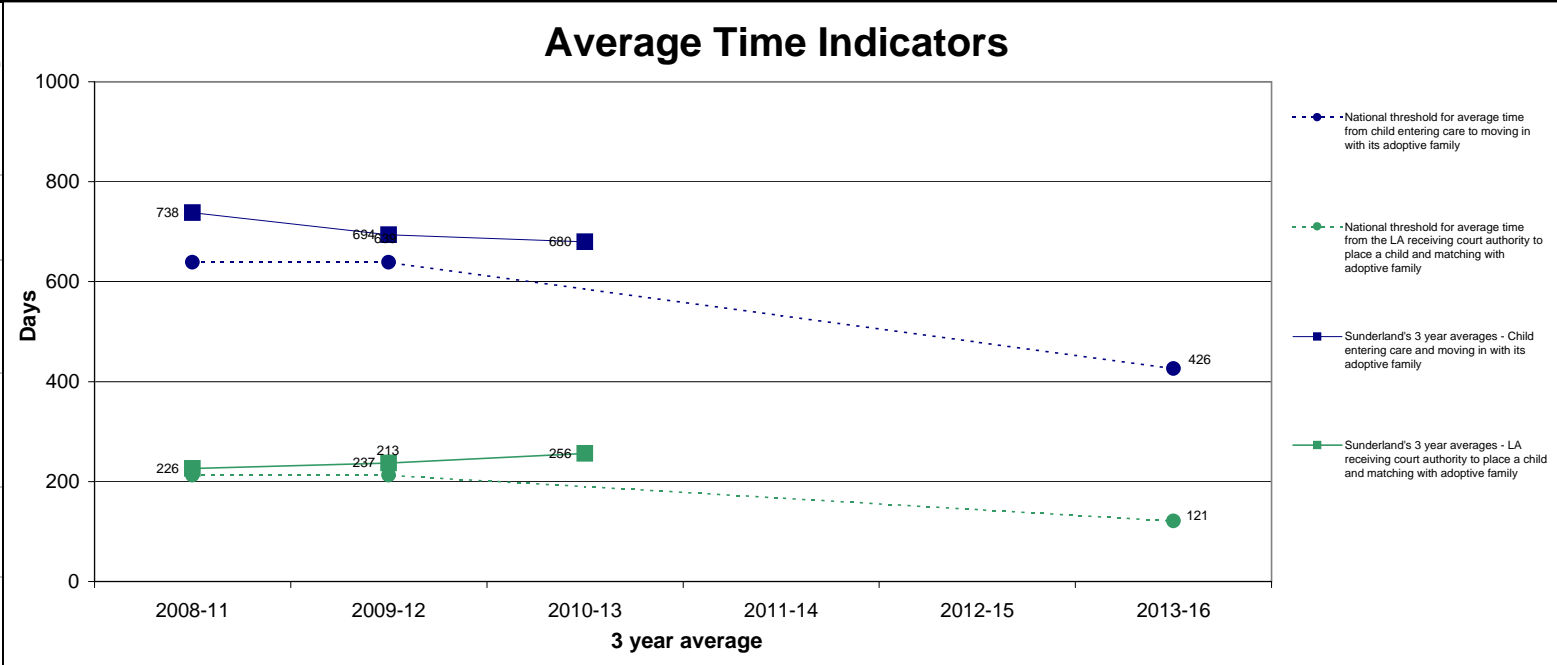
Children's Services and Departmental Strategy Directorate

Adoption Scorecard

Sunderland

Children

	Average time between a child entering care and moving in with its adoptive family, for children who have been adopted (days)	Average time between a local authority receiving court authority to place a child and the local authority deciding on a match to an adoptive family (days)	Children who wait less than x months between entering care and moving in with their adoptive family (number and %)
LA's 3 year average (2010-13)	680	256	Indicator to be agreed
1 year trend - Improvement from 2012 to 2013	Average time in 2013 was shorter than 2012	Average time in 2013 was shorter than 2012	n/a
3 year trend - Improvement from 2009-12 to 2010-13	Average time in 2010-13 was shorter than in 2009-12	Average time in 2010-13 was longer than in 2009-12	n/a
England 3 year average (2010-13)	647	210	Indicator to be agreed
Distance from 2010-13 performance threshold	Threshold to be agreed	Threshold to be agreed	n/a



Adopters

Related Information

	Number of approved adoptive families as at 31 March 2013	Proportion of adoptive families who were matched to a child during 2012-13 who waited more than x months from approval to being matched to a child	Adoptions from care (number adopted and % leaving care who are adopted)	Number and % of children for whom the permanence decision has changed away from adoption	Average time between a child entering care and moving in with its adoptive family. Where times for children who are adopted by their foster family are stopped at the date the child moved in with the foster family (days)	Adoptions of children from ethnic minority backgrounds (number adopted and % of BME children leaving care who are adopted)	Adoptions of children aged five or over (number adopted and % of children aged 5 or over leaving care who are adopted)	Average length of care proceedings locally (weeks)	Number of children awaiting adoption (as at 31 March 2013)	Number of applications for approval as an adopter still being assessed (not yet approved or rejected) as at 31 March 2013
LA average	Data not available until November	Data not available until November	110 (21%)	35 (16%)	655	x (x%)	40 (11%)	51	45	Data not available until November
England			10,540 (13%)	2,020 (9%)	545	1,600 (7%)	2,580 (4%)	51	6,890	

Notes for all indicators

- Percentages have been derived from unrounded numerator and denominator figures.
- Percentages have been rounded to whole numbers but where the numerator was five or less or the denominator was 10 or less, they have been suppressed and replaced by a cross (x).
- Numbers in the related information section of the scorecard are rounded to the nearest 5 children. For confidentiality purposes, numbers from one to five inclusive have been replaced by a cross (x). Where any number is shown as zero (0), the original figure submitted was zero (0).
- The average number of days have been derived from unrounded numerator and denominator figures and are presented rounded to the nearest day.
- The distance from the 2010-13 performance threshold has been derived from unrounded figures and presented rounded to the nearest day. Therefore the difference between the 3 year average and the 2010-13 threshold may not be the same as the distance from the 2010-13 performance threshold.
- Symbols used:
 - x Figures not shown in order to protect confidentiality.
 - .. Not applicable, i.e. no children in the cohort.
 - .. Percentages less than 0.5% but greater than 0%
- All figures exclude children looked after under an agreed series of short term placements.

Notes for individual indicator

	Latest data	Data included in average	When will the next data be available?	Where can I find the numerators and denominators for percentages	Notes
Average time between a child entering care and moving into their adoptive family for children who have been adopted (days)					
Indicator A1	2013	2011 2012 2013	Data for 2014 will be available from Autumn 2014	Link to be provided The number of children who were adopted can be found in table LAE1 of the Looked After Children SFR	<ol style="list-style-type: none"> This indicator includes all children adopted in the period 1 April 2010 to 31 March 2013 that were placed for adoption immediately prior to their adoption. Time is calculated between a child starting to be looked after and their placement for adoption, i.e. the date they move with their adoptive family. Only children with valid data are included. Figures are rounded to the nearest day.
Average time between a local authority receiving court authority to place a child and the local authority deciding on a match to an adoptive family (days)					
Indicator A2	2013	2011 2012 2013	Data for 2014 will be available from Autumn 2014	Underlying figures are not currently published	<ol style="list-style-type: none"> This indicator includes all children adopted in the period 1 April 2010 to 31 March 2013 that were placed for adoption and on a placement order or freeing order immediately prior to their adoption. Time is calculated between receiving court authority to adopt (granting of placement order/freeing order) and matching with adopters. A time of zero is assigned to children who were matched before court authority was received. Figures are rounded to the nearest day.
The number and percentage of children who wait less than XX months between entering care and moving in with their adoptive family					
Indicator A3	2013	2011 2012 2013	Data for 2014 will be available from Autumn 2014	Underlying figures are not currently published	<ol style="list-style-type: none"> This indicator includes all children adopted in the period 1 April 2010 to 31 March 2013 that were placed for adoption immediately prior to their adoption and all children with a current adoption plan at 31 March 2013 (excluding those where the decision to adopt has been reversed). When adoption is the preferred option for permanence this is referred to as the adoption plan. Time is calculated between a child starting to be looked after and their placement for adoption, i.e. the date they move in with their adoptive family. Only children with valid data are included. Children are flagged if they waited less than XX months (measured at XXX days) between starting to be looked after and being placed for adoption or had not yet been looked after for XX months at 31 March 2013. The numerator is therefore all adopted children who were placed for adoption first who were placed less than XX months after becoming looked after and all children looked after at 31 March 2013 with a current adoption decision who were placed less than XX months after becoming looked after or who had not yet been looked after for XX months. The denominator is therefore all adopted children who were placed for adoption first and all looked after at 31 March with a current adoption decision.
The number of approved adoptive families					
Indicator A11	2013			http://www.ofsted.gov.uk/resources/adoption-quality-assurance-and-data-form-2012-13 Data yet to be published. The number of approved adoptive families can be found in section B1.1	
The percentage of adoptive families matched to a child who waited at least XX months from approval to being matched					
Indicator A12	2013			http://www.ofsted.gov.uk/resources/adoption-quality-assurance-and-data-form-2012-13 Data yet to be published. The number of families waiting by time categories from approval to match can be found in section B3	
Adoptions from care (number adopted and percentage leaving care who are adopted)					
Indicator A4	2013	2011 2012 2013	Data for 2014 will be available from Autumn 2014	Link to be provided The number of children leaving care can be found in table LAD1 and the number of children who were adopted can be found in table LAE1 of the Looked After Children SFR	<ol style="list-style-type: none"> Only the last occasion on which a child ceased to be looked after in each year has been counted. A child who ceased to be in care in more than one year will be counted more than once. This indicator compares the number of children who ceased to be looked after in the period 1 April 2010 to 31 March 2013 with the number of children who were adopted during that period.
The number and percentage of children for whom the permanence decision has changed away from adoption					
Indicator A5	2013	2011 2012 2013	Data for 2014 will be available from Autumn 2014	Underlying figures are not currently published	<ol style="list-style-type: none"> The denominator includes all children with an ongoing adoption decision in the period 1 April 2010 to 31 March 2013. (The adoption decision date may be prior to 1 April 2010.) The numerator includes all children with an ongoing adoption decision in the period 1 April 2010 to 31 March 2013 for whom the decision was reversed in the period 1 April 2010 to 31 March 2013.
Average time between a child entering care and moving in with its adoptive family adjusted for foster carer adoptions, for children who have been adopted (days)					
Indicator A10	2013	2011 2012 2013	Data for 2014 will be available from Autumn 2014	Link to be provided The number of children who were adopted can be found in table LAE1 of the Looked After Children SFR	<ol style="list-style-type: none"> This indicator includes all children adopted in the period 1 April 2010 to 31 March 2013 that were placed for adoption immediately prior to their adoption. This indicator includes the same children as indicator A1 and the average time is calculated in the same way for children who are not adopted by their foster carers i.e. time is calculated between a child starting to be looked after and their placement for adoption (the date they move with their adoptive family). However the average time for children who are adopted by their foster carers is calculated differently to A1. Where children are adopted by their foster carer, the time is measured until the date they moved in with their foster carer. Only children with valid data are included. Figures are rounded to the nearest day.
The percentage of black and minority ethnic children leaving care who are adopted					
Indicator A6	2013	2011 2012 2013	Data for 2014 will be available from Autumn 2014	2011 data: http://www.education.gov.uk/childrenandyoungpeople/families/adoption/b0076713/datasack	<ol style="list-style-type: none"> Only the last occasion on which a child ceased to be looked after in the year has been counted. The numerator includes all children with a known ethnicity of Asian, Black, Chinese, Mixed or Other who were adopted in the period 1 April 2010 to 31 March 2013. The denominator includes all children within these ethnic groups who ceased to be looked after for any reason in the same time period. Numerators and denominators exclude all children where ethnicity was refused or not obtained. Percentages show the proportion of all black and minority ethnic children leaving care who are adopted. Therefore if a local authority has a low proportion of black and minority ethnic children in their care population then the denominator will reflect this low number.
The percentage of children aged 5 or over leaving care who are adopted					
Indicator A7	2013	2011 2012 2013	Data for 2014 will be available from Autumn 2014	2011 data: http://www.education.gov.uk/childrenandyoungpeople/families/adoption/b0076713/datasack	<ol style="list-style-type: none"> Only the last occasion on which a child ceased to be looked after in the year has been counted. Age on leaving care. The numerator includes all children who were adopted in period 1 April 2010 to 31 March 2013 who were aged 5 or over. The denominator includes all children who were aged 5 or over when they ceased to be looked after in the same time period.
Average length of care proceedings locally (weeks)					
Indicator A8	2013	2011 2012 2013	Data for 2014 will be available from Autumn 2014	Figures are currently not publicly available	<ol style="list-style-type: none"> Figures are provided from the Cafcass National Case Management System (CMS). CMS is a live system and any late entries will be accounted for at the time of release of subsequent updates to this data. The unit of measurement is a care application. An application can involve multiple children. Care application duration is calculated from date of care application to the court to date application completed on CMS. Averages are based on care applications completed in the period. The average length of care proceedings locally includes all care proceedings which the local authority has initiated, including care proceedings which take place in courts outside of the local authority area. 2012-13 data captured as at 15 June 2013, 2011-12 data captured as at 2nd July 2012 and 2010-11 data captured as at 9 September 2013.
Number of children awaiting adoption					
Indicator A9	2013			Underlying figures are not currently published	<ol style="list-style-type: none"> This indicator includes all children with an adoption plan in year ending 31 March 2013 that were still looked after at 31 March 2013 and who had not yet been placed for adoption at 31 March 2013. When adoption is the preferred option for permanence this is referred to as the adoption plan.
Number of applications to be an adopter still being assessed as at 31st March 2013					
Indicator A13	2013			http://www.ofsted.gov.uk/resources/adoption-quality-assurance-and-data-form-2012-13 Data yet to be published. The number of applications still to be assessed can be found in section B2.4	

Notes for all tables

- Figures for England prior to 2010 include figures for Cheshire and Bedfordshire, however performance in these former LAs are not shown in the tables. In 2009, Cheshire Local Authority split into Cheshire East and Cheshire West and Chester. Similarly, Bedfordshire LA split into Bedford Borough and Central Bedfordshire. Figures for Cheshire East, Cheshire West and Chester, Bedford Borough and Central Bedfordshire only include data for 2010 onwards for all indicators.
- Percentages have been derived from unrounded numerator and denominator figures.
- Percentages have been rounded to whole numbers but where the numerator was five or less or the denominator was 10 or less, they have been suppressed and replaced by a cross (x). You should not infer a suppressed number as a calculation from non-suppressed data.
- Symbols used:
 - x Figures not shown in order to protect confidentiality.
 - .. Not applicable, i.e. no children in the cohort.
 - Percentages less than 0.5% but greater than 0%
- All tables include a rank to show the local authorities in order of performance (local areas with the best performance are ranked as number one). If a local authority has the same percentage then they will receive the same rank.

Notes for individual tables

	Latest data	Data included in average			When will the next data be available?	Where can I find the numerators and denominators for percentages	Notes
	The percentage of children looked after at 31 March with three or more placements during the year ending 31 March						
	Indicator 1	2013	2011	2012	2013	Data for 2014 will be available in September 2014 2011 data can be found in table LAA10 http://www.education.gov.uk/rsgateway/DB/SFR/s001026/index.shtml	<ol style="list-style-type: none"> Data for all years are based on the snapshot taken in August 2013. Figures exclude children looked after under an agreed series of short term placements. A child being placed for adoption with their existing foster carer is not included as a change of placement for the purposes of these figures. Looked after children who go missing from their placement for a period of 24 hours or more have their missing period included as a placement in this analysis. If a child goes missing from care and then returns within the year, this will be included as three separate placements as the placements before and after the missing period are included separately. From 2014-15, each episode of a child being missing or absent from care will be recorded in a separate module in the SSDA 903 collection, and the Department will be able to exclude missing children from the placement analysis accordingly.
	The percentage of looked after children aged under 16 at 31 March who had been looked after continuously for at least 2.5 years who were living in the same placement for at least 2 years, or are placed for adoption and their adoption and their adoptive placement together with their previous placement, last for at least 2 years						
Placements	Indicator 2	2013	2011	2012	2013	Data for 2014 will be available in September 2014 2011 data can be found in table LAA11 http://www.education.gov.uk/rsgateway/DB/SFR/s001026/index.shtml	<ol style="list-style-type: none"> Data for all 5 years are based on the snapshot taken in August 2013. Figures exclude children looked after under an agreed series of short term placements. The percentage is obtained from $X/Y*100$ where X = All who have been living in the same placement for at least two years, i.e. at 31 March they have been in the same placement continuously for more than 729 days inclusive of 31 March. Children who are placed for adoption at 31 March are now only to be included in the numerator if their previous care placement, plus the adoptive placement have together lasted more than 729 days. Y = All children aged under 16 on 31 March of the year of measurement who had been looked after for 2.5 years or more (i.e. for more than 912 days inclusive of 31 March) on 31 March of the year of measurement. Exclude children who had been looked after at any time during the 2.5 year period under an agreed series of short term-placements.
	The percentage of looked after children at 31 March placed outside LA boundary and more than 20 miles from where they used to live						
	Indicator 3	2013	2011	2012	2013	Data for 2014 will be available in September 2014 2012 data can be found in table LAA6 https://www.gov.uk/government/publications/children-looked-after-by-local-authorities-in-england-including-adoption	<ol style="list-style-type: none"> Placement locality denotes whether or not the placement at 31 March is within the geographical boundary of the responsible local authority.
	The percentage of children who ceased to be looked after who were adopted						
Adoption	Indicator 1	2013	2011	2012	2013	Data for 2014 will be available in September 2014 Data can be found in table LAE1	<ol style="list-style-type: none"> Only the last occasion on which a child ceased to be looked after in the year has been counted in the denominator. Figures in the denominator exclude children looked after under an agreed series of short term placements. High percentages represent high performance, but percentages should not reach 100%.

	The percentage of children who ceased to be looked after because of a special guardianship order						
Indicator 2	2013	2011	2012	2013	Data for 2014 will be available in September 2014	Denominators can be found in table LAE1	<ol style="list-style-type: none"> 1. Only the last occasion on which a child ceased to be looked after in the year has been counted in the denominator. 2. Figures in the denominator exclude children looked after under an agreed series of short term placements. 3. High percentages represent high performance, but percentages should not reach 100%.
Average time between a child entering care and moving in with its adoptive family, for children who have been adopted (days)							
Indicator A1	2013	2011	2012	2013	Data for 2014 will be available from Autumn 2014	The number of children who were adopted can be found in table LAE1	<ol style="list-style-type: none"> 1. This indicator includes all children adopted in the period 1 April 2010 to 31 March 2013 that were placed for adoption immediately prior to their adoption. 2. Time is calculated between a child starting to be looked after and their placement for adoption, i.e. the date they move with their adoptive family. Only children with valid data are included. 3. The average number of days have been derived from unrounded numerator and denominator figures and are presented rounded to the nearest day. 4. Figures exclude children looked after under an agreed series of short term placements.
Average time between a local authority receiving court authority to place a child and the local authority deciding on a match to an adoptive family (days)							
Indicator A2	2013	2011	2012	2013	Data for 2014 will be available from Autumn 2014	Underlying figures are not currently published	<ol style="list-style-type: none"> 1. This indicator includes all children adopted in the period 1 April 2010 to 31 March 2013 that were placed for adoption and on a placement order or freeing order immediately prior to their adoption. 2. Time is calculated between receiving court authority to adopt (granting of placement order/freeing order) and matching with adopters. A time of zero is assigned to children who were matched before court authority was received. 3. The average number of days have been derived from unrounded numerator and denominator figures and are presented rounded to the nearest day. 4. Figures exclude children looked after under an agreed series of short term placements.
The number and percentage of children who wait less than XX months between entering care and moving in with their adoptive family							
Indicator A3	2013	2011	2012	2013	Data for 2014 will be available from Autumn 2014	Underlying figures are not currently published	<ol style="list-style-type: none"> 1. This indicator includes all children adopted in the period 1 April 2010 to 31 March 2013 that were placed for adoption immediately prior to their adoption <u>and</u> all children with a current adoption plan at 31 March 2012 (excluding those where the decision to adopt has been reversed). When adoption is the preferred option for permanence this is referred to as the adoption plan. 2. Time is calculated between a child starting to be looked after and their placement for adoption, i.e. the date they move in with their adoptive family. Only children with valid data are included. Children are flagged if they waited less than XX months (measured at XXX days) between starting to be looked after and being placed for adoption or had not yet been looked after for XX months at 31 March 2013. 3. The numerator is therefore all adopted children who were placed for adoption first who were placed less than XX months after becoming looked after <u>and</u> all children looked after at 31 March 2013 with a current adoption decision who were placed less than XX months after becoming looked after or who had not yet been looked after for XX months. 4. The denominator is therefore all adopted children who were placed for adoption first <u>and</u> all looked after at 31 March with a current adoption decision. 5. Figures exclude children looked after under an agreed series of short term placements.
The proportion of children leaving care over the age of 16 who remained looked after until their 18th birthday							
Indicator 1	2013	2011	2012	2013	Data for 2014 will be available in September 2014	These data are not currently published	<ol style="list-style-type: none"> 1. Only the last occasion on which a child ceased to be looked after in the year has been counted. 2. The numerator used in this calculation is all children who ceased to be looked after in the year ending 31 March who were aged 18 or over when they ceased to be looked after. 3. The denominator used in this calculation is all children who ceased to be looked after in the year ending 31 March who were aged 16 and over when they ceased to be looked after.
The proportion of young people aged 19 who were looked after aged 16 who were not in employment, education or training							
Indicator 2	2013	2011	2012	2013	Data for 2014 will be available in September 2014	2012 data can be found in table LAF1 https://www.gov.uk/government/publications/children-looked-after-by-local-authorities-in-england-including-adoption	<ol style="list-style-type: none"> 1. Figures exclude children now aged 19 years who were looked after on 1 April 2009 then aged 16 (and in their 17th year) under an agreed series of short-term placements. 2. Includes children who are not in employment, education or training due to illness or disability.
The proportion of young people aged 19 who were looked after aged 16 who were in suitable accommodation							
Indicator 3	2013	2011	2012	2013	Data for 2014 will be available in September 2014	2012 data can be found in table LAF2 https://www.gov.uk/government/publications/children-looked-after-by-local-authorities-in-england-including-adoption	<ol style="list-style-type: none"> 1. Figures exclude children now aged 19 years who were looked after on 1 April 2009 then aged 16 (and in their 17th year) under an agreed series of short-term placements.
The percentage of young people aged 19 who were looked after aged 16 who were in higher education							
Indicator 4	2013	2011	2012	2013	Data for 2014 will be available in September 2014	2012 data can be found in Table LAF1 https://www.gov.uk/government/publications/children-looked-after-by-local-authorities-in-england-including-adoption	<ol style="list-style-type: none"> 1. Figures exclude children now aged 19 years who were looked after on 1 April 2009 then aged 16 (and in their 17th year) under an agreed series of short-term placements. 2. Higher education includes all education levels above A level. 3. It has been necessary to suppress other figures whenever it would be possible to calculate the value of a suppressed number by means of simple arithmetic with data from other publications.