



Fire Statistics Monitor 2013/14

August 2014

Data and Information Team

Data and Information Audit	
Compiled by:	AR
Checked by:	CMC
Data Valid at:	15/08/2014
Approved for Publication	
Approved by:	RH
Date Approved:	23/09/2014

Please note that the dataset contained in this report may contain personal data. This data should not be used for anything other than its intended purpose / audience, and should not be re-circulated without the permission of TWFRS.

Contents

1 Executive Summary..... 4

2 Introduction 5

3 Incident Overview 6

4 Fire Fatality Analysis 7

5 Non-Fatal Casualty Analysis 9

6 Fire and False Alarm Analysis 12

7 Non-Fire Incident Analysis 15

8 Metropolitan FRS Comparisons 16

1 Executive Summary

- 1.1 In 2013/14 there were 6,446 Fires attended by TWFRS, an increase of 21% (1,125) from 2012/13 and a 63% (10,903) reduction from 2001/02.
- 1.2 In 2013/14 there were 7,004 False Alarms attended by TWFRS, a reduction of 3% (233) from 2012/13 and a 27% (2,647) reduction from 2001/02.
- 1.3 In 2013/14 there were 2,091 non-fire (Special Service) incidents attended by TWFRS, a reduction of 6% (133) from 2012/13 and an 18% (446) reduction from 2001/02.
- 1.4 Overall there were 15,541 incidents attended by TWFRS in 2013/14, an increase of 5% (759) from 2012/13 and a 47% (13976) reduction from 2001/02.
- 1.5 When compared with the national statistics TWFRS figures are comparable, with total incidents attended by TWFRS falling by 47% over the last 10 years.
- 1.6 Although there has been an overall increase in fire incidents attended nationally and by TWFRS when compared to the previous year this follows a downward trend from 2001/02. It is positive to see mainly reductions in key indicators when figures are compared to the previous year.

2 Introduction

- 2.1 This Fire Statistics Monitor focuses on analysis of fire and rescue incidents and fire casualty data for England for the financial year 2013/14 (April 2013 to March 2014). Its source is the records of all incidents attended by local authority fire and rescue services.
- 2.2 The purpose of this report is to provide a more focused view of how the metropolitan FRS's are performing not only in comparison to each other but also nationally.

3 Incident Overview

Tyne and Wear	2013/2014	Change from 2012/13 to 2013/14	Change from 2001/02 to 2013/14
All fires	6446	+21%	-63%
False alarms	7004	-3%	-27%
Non-fire incidents	2091	-6%	-18%
Total incidents attended	15541	+5%	-47%

England	2013/2014	Change from 2012/13 to 2013/14	Change from 2001/02 to 2012/13
Fires	169971	+10%	-61%
Fire false alarms	223376	-4%	-43%
Non-fire incidents	130596	-3%	-21%
Total incidents attended	523943	+1%	-47%

4 Fire Fatalities Analysis

- 4.1 In 2013/14 there were 5 fire fatalities recorded within Tyne and Wear, an increase of 4 from the previous year. When compared to 2001/02 this is a 38% reduction.
- 4.2 In Tyne and Wear there were 4 accidental dwelling fire fatalities during 2013/14, an increase of 4 from the previous year but a reduction of 3 from 2001/02.

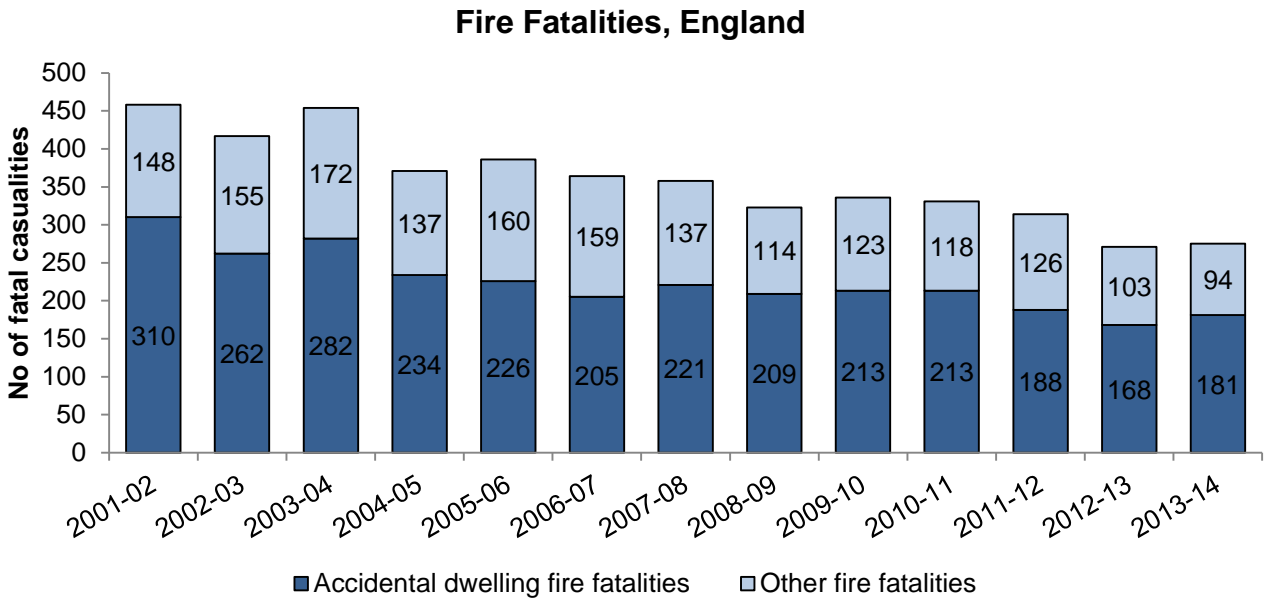
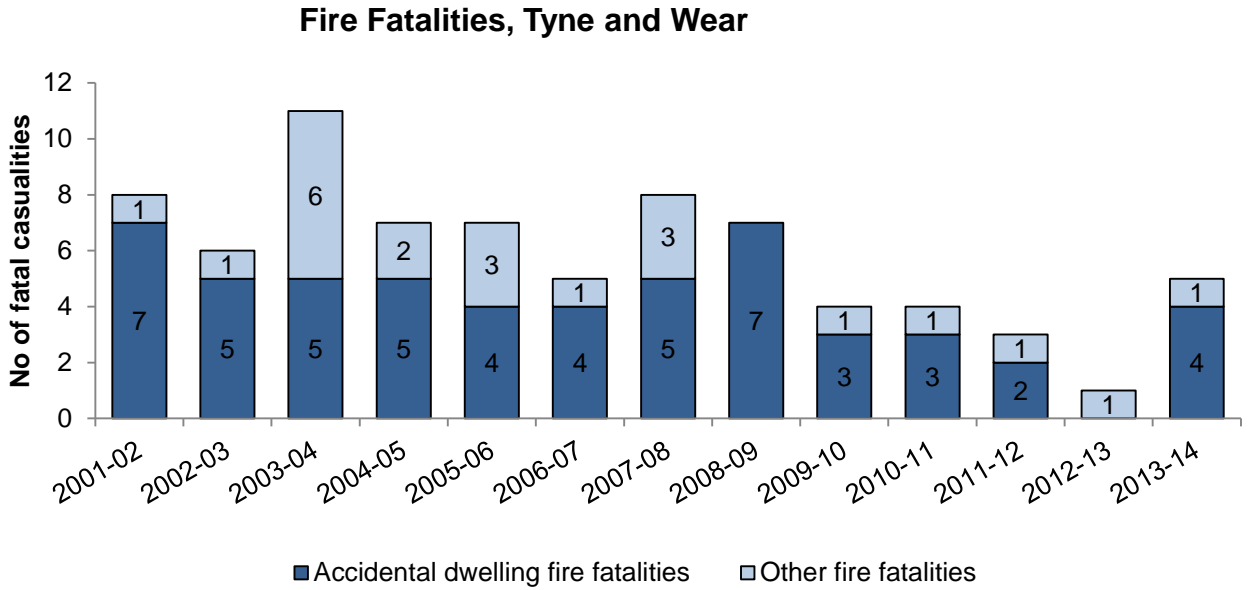
Fire fatalities and non-fatal casualties

Tyne & Wear	2012-2013	2013-2014	Change from 2001-02 to 2013-14
Fire Fatalities	1	5 (+4)	-38%
of which in accidental dwelling fires	0	4 (+4)	-43%
non-fatal casualties, excluding precautionary checks recommended and first aid cases	94	86 (-8)	-72%

England	2012-2013	2013-2014	Change from 2001-02 to 2013-14
Fire Fatalities	289	+5%	-40%
of which in accidental dwelling fires	175	+3%	-42%
non-fatal casualties, excluding precautionary checks recommended and first aid cases	3814	-5%	-61%

Note: non fire related injuries/fatalities have been included due to inappropriate use.
 Note: Excludes first aid and precautionary checks.

4.3 The below charts show the fluctuations in total from 2001/02 to 2013/14



4.4 In comparison to the national average Tyne and Wear's figures appear to show a considerable increase, this is mainly due to an exceptional year in 2012/13 when there were no accidental fire fatalities in Tyne and Wear.

5 Non-Fatal Fire Casualties

- 5.1 In Tyne and Wear there were 86 non-fatal casualties, excluding precautionary checks and first aid, in 2013/14. This is a reduction of 9% (8) from the previous year and an overall reduction of 72% (224) from 2001/02.
- 5.2 It is noted that there has been a decrease of 35% (40) in non-fatal casualties requiring first aid in 2013/14 when comparing against 2012/13.
- 5.3 In Tyne and Wear the total number of non-fatal casualties (including precautionary checks and first aid) from dwelling fires was 234 which is a reduction of 6% (14) from the previous year, and a reduction of 46% (202) from 2001/02.
- 5.4 There were 188 non-fatal casualties resulted from accidental dwelling fires in 2013/14, which is a reduction of 4% (8) from the previous year, and a reduction of 40% (125) from 2001/02.
- 5.5 The tables below detail the non-fatal casualties by type showing percentage change from 2001/02 to 2013/14.

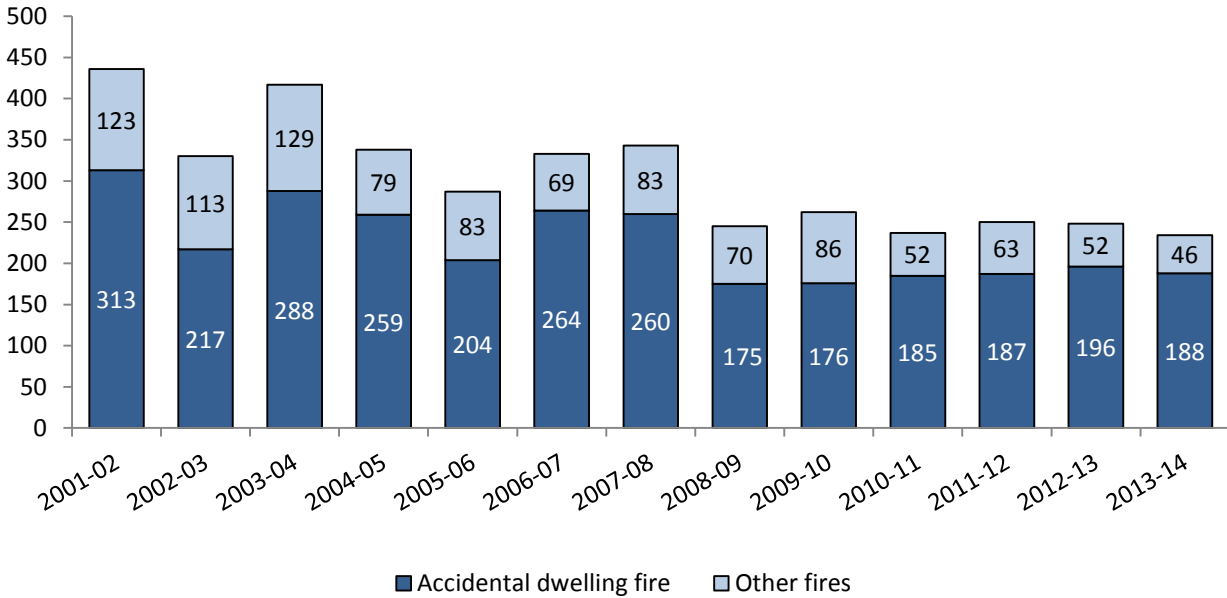
Tyne and Wear	2013-2014	Change from 2012-13 to 2013-14	Change from 2001-02 to 2013-14
Hospital severe	15	+15%	-
Hospital slight	71	-12%	-
Non-fatal excluding precautionary checks and first aid	86	-9%	-72%
First aid	75	-35%	-
Non-fatal casualties excluding precautionary checks	161	-23%	-
Precautionary checks recommended	73	+87%	-
Total non-fatal casualties	234	-6%	-46%
of which resulted from dwelling fires	198	-10%	-46%
of which resulted from accidental dwelling fires	188	-4%	-40%

England	2013-2014	Change from 2012-13 to 2013-14	Change from 2001-02 to 2013-14
Hospital severe	643	-3%	-
Hospital slight	2971	-6%	-
Non-fatal excluding precautionary checks and first aid	3614	-5%	-61%
First aid	2713	-2%	-
Non-fatal casualties excluding precautionary checks	6327	-4%	-
Precautionary checks recommended	1854	0%	-
Total non-fatal casualties	8182	-3%	-41%
of which resulted from dwelling fires	6,438	-4%	-40%
of which resulted from accidental dwelling fires	5724	-4%	-38%

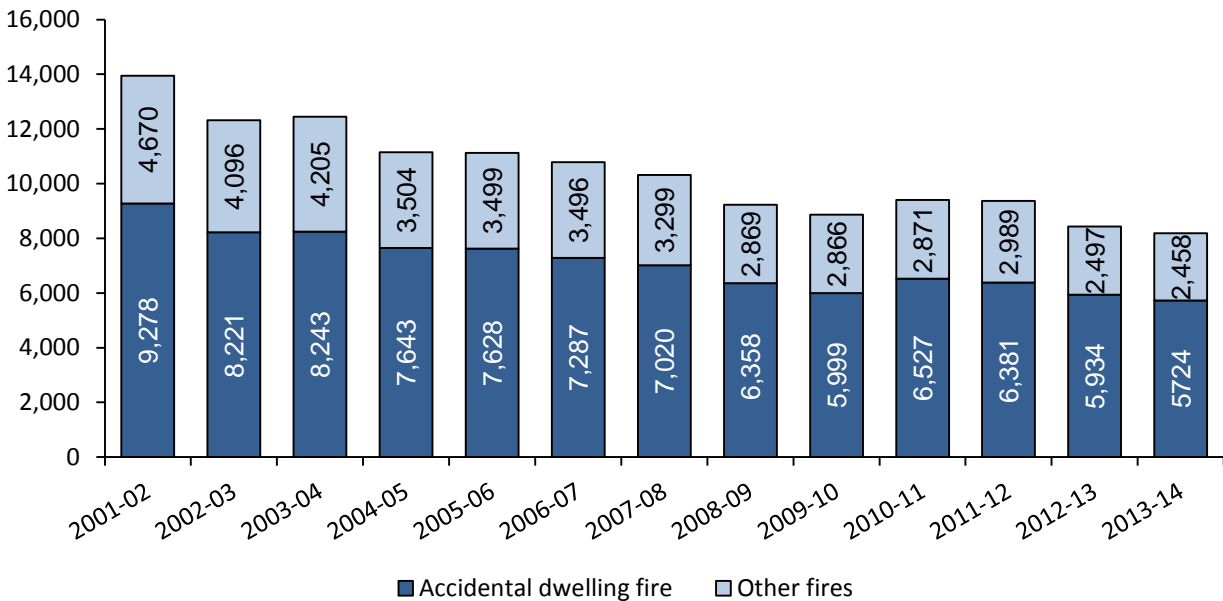
5.6 In Tyne and Wear, the total number of non-fatal casualties has been reduced by 46% (202) from 2001/02, with a slight reduction of 6% (14) from 2012/13 which is better than the decrease at national level which was 4% compared to last year.

5.7 The charts below show a downward trend in the number of non-fatal casualties for Tyne and Wear and England. There is a downward trend from 2001 to 2007, with a consistent number of non-fatal casualties from 2008 to 2013.

Non-fatal casualties in Tyne and Wear

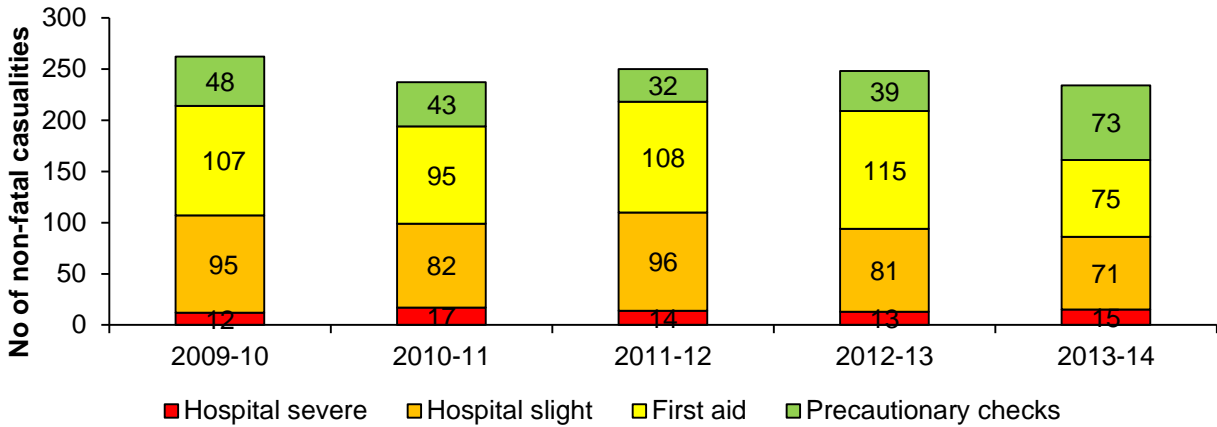


Non-fatal casualties in England

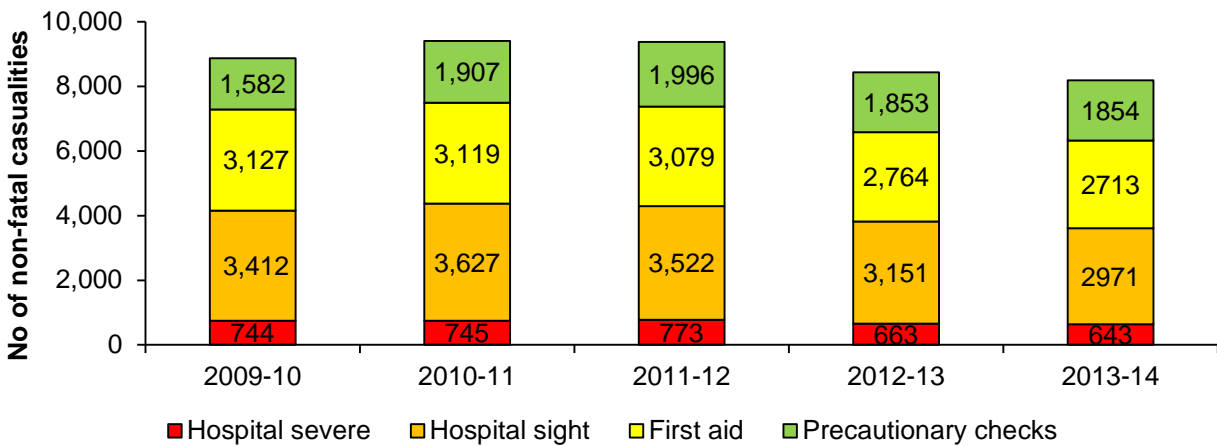


- 5.8 The charts presented below show non-fatal injuries from 2009/10 to 2013/14 from the IRS.
- 5.9 The objective of the charts is to show the proportion of injuries as per the classification.
- 5.10 There has been a drop in the total number of injuries from 2009/10 to 2013/14 in Tyne and Wear and England.

Non-fatal casualties, Tyne & Wear



Non-fatal casualties, England

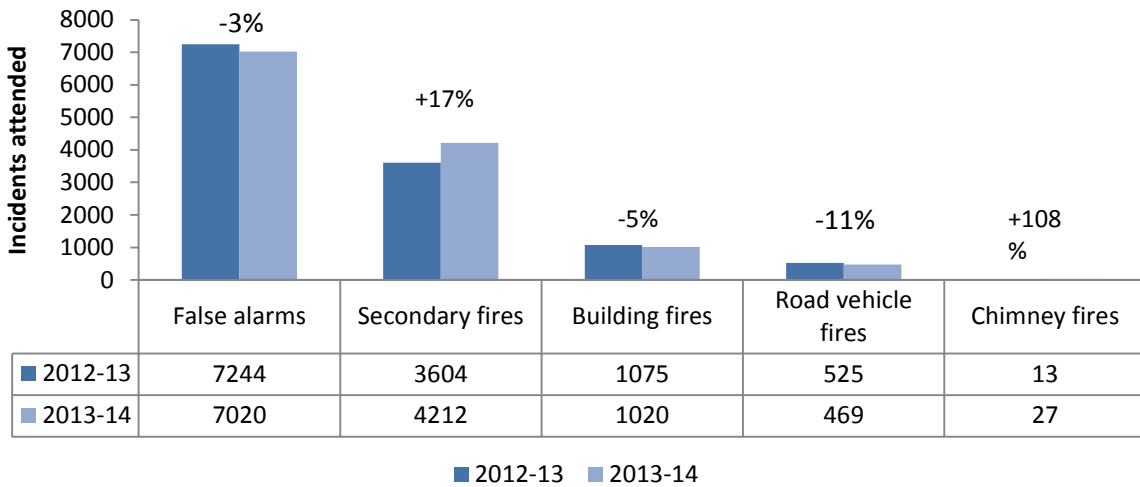


6 Fires and False Alarms

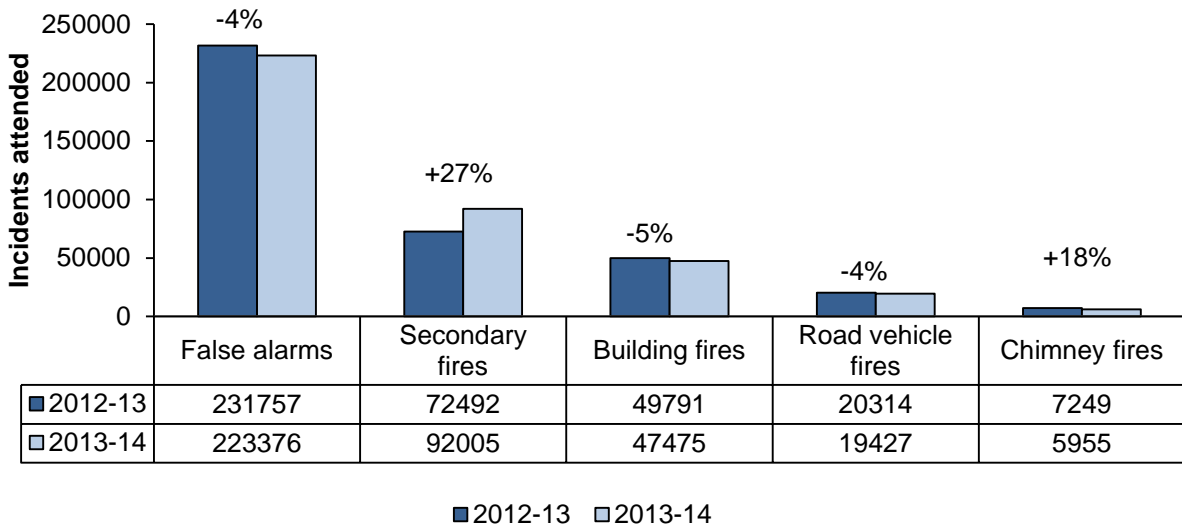
6.1 The below charts show the type of incidents measured between 2012/13 and 2013/14.

6.2 The majority of the incident types showed a reduction between 2012/13 and 2013/14 with an increase of 17% (608) in secondary fires. This increase is lower than the national data which showed an increase of 27% (19513) during the same period.

Change in fire and false alarms, Tyne and Wear



Change in fire and false alarms, England

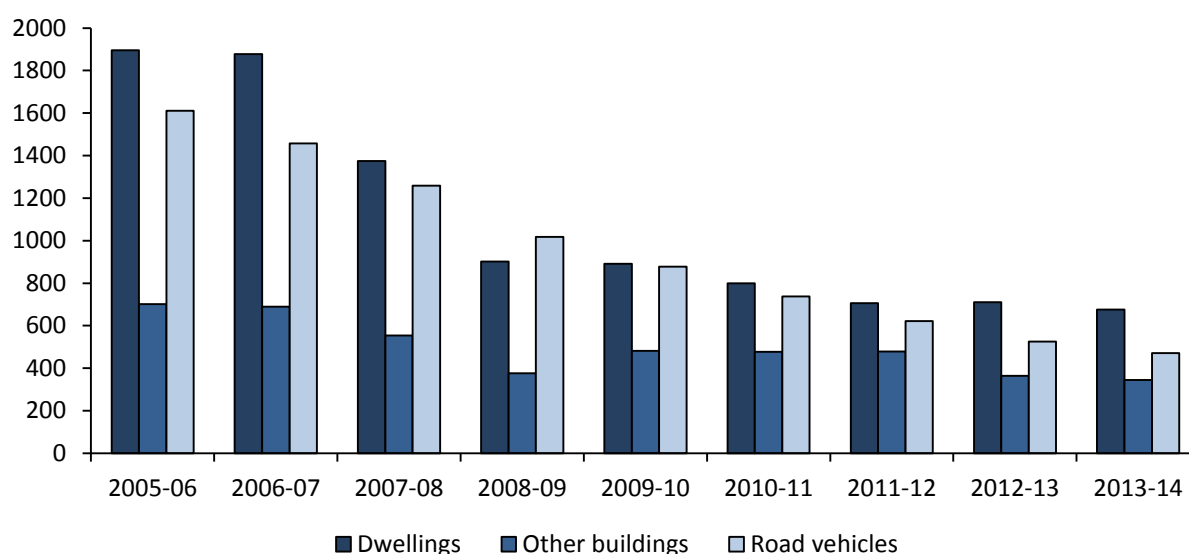


- 6.3 In 2013/14 there has been a 3% (19) reduction in accidental dwelling fires when compared against 2012/13, and a reduction of 66% (1091) from 2001/02.
- 6.4 In 2013/14 there was a reduction of 16% (2405) in total incidents within Tyne and Wear when compared against 2012/13 and a reduction of 42% (12351) from 2001/02.

Tyne and Wear – Incident types	2013-2014	Change from 2012-13 to 2013-14	Change from 2001-02 to 2013-14
Primary fires	1602	-6%	-75%
Building fires	1020	-5%	-68%
Dwelling fires	676	-5%	-70%
of which accidental	570	-3%	-66%
Other buildings	344	-5%	-65%
Road vehicles	471	-10%	-82%
Other	111	8%	-84%
Secondary fires	4817	34%	-55%
Chimney fires	27	108%	59%
Total fires	6446	21%	-63%
of which deliberate primary fires	5129	-7%	-85%
Fire false alarms	7020	-3%	-27%
Total fires and false alarms	15095	7%	-50%
Non-fire incidents	2091	-6%	-18%
Total incidents	17186	5%	-47%

- 6.5 From the chart below, it is obvious there is a general downward trend in Dwelling, Road vehicle and Other building fires.

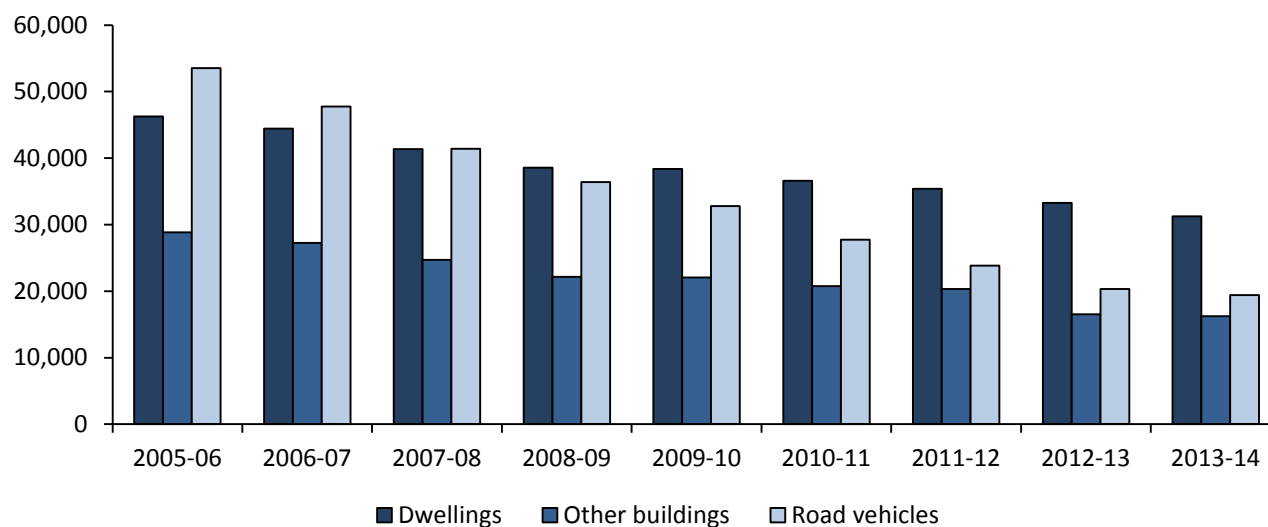
Building and road vehicle primary fires Tyne and Wear



OFFICIAL

England – Incident types	2013-2014	Change from 2012-13 to 2013-14	Change from 2001-02 to 2013-14
Primary fires	72011	-4%	-62%
Building fires	47475	-5%	-48%
Dwelling fires	31246	-6%	-43%
of which accidental	28034	-5%	-35%
Other buildings	16229	-2%	-55%
Road vehicles	19427	-4%	-78%
Other	5109	11%	-53%
Secondary fires	92005	27%	-61%
Chimney fires	5955	-18%	-27%
Total fires	169971	10%	-61%
of which deliberate primary fires	17666	-9%	-83%
Fire false alarms	223376	-4%	-43%
Total fires and false alarms	393347	2%	-52%
Non-fire incidents	130596	-3%	-21%
Total incidents	523943	1%	-47%

Building and road vehicle primary fires, England



7 Non Fire Incidents (Special Services)

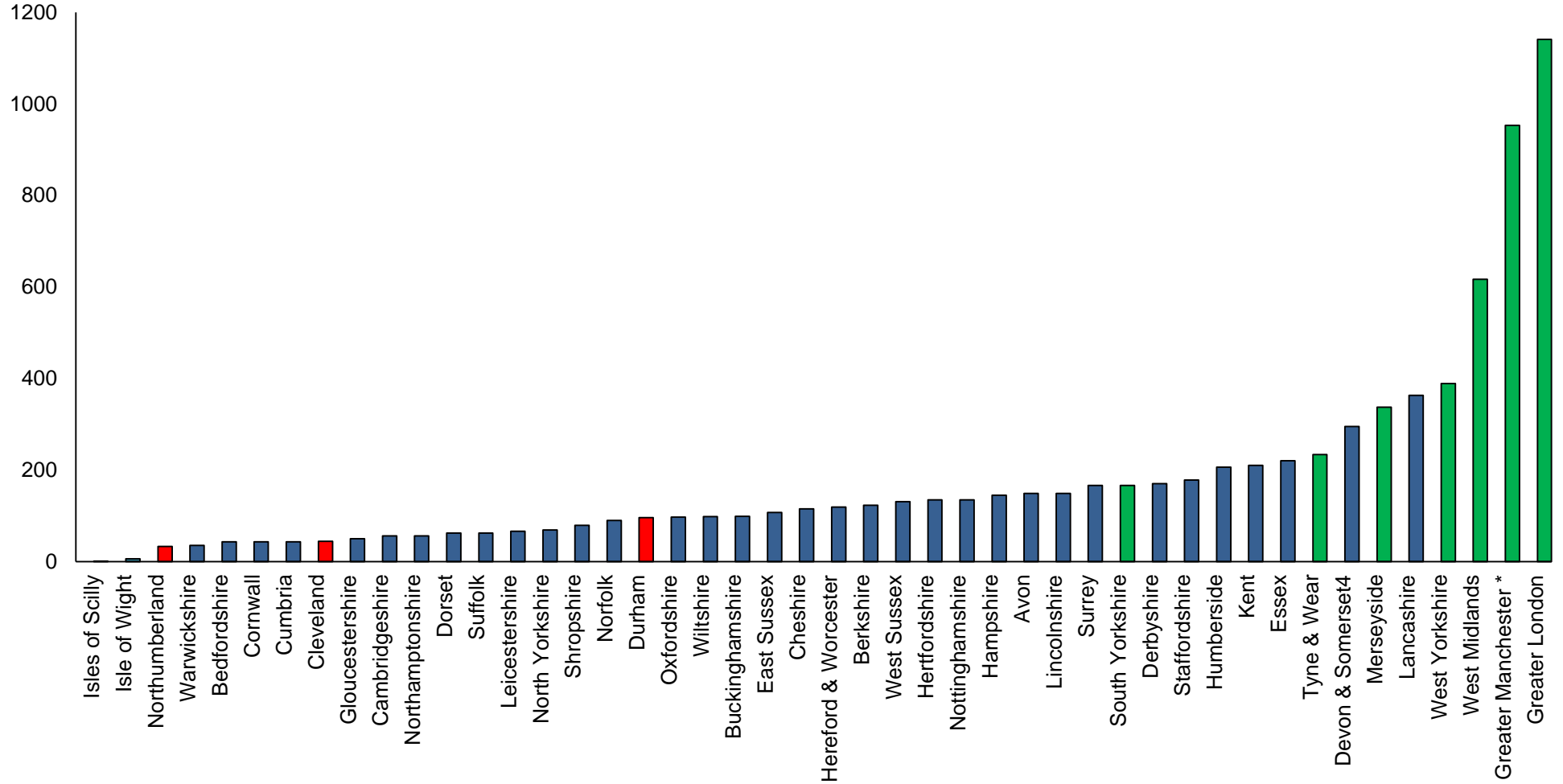
- 7.1 In 2013/14 we attended 334 road traffic incidents, which is a reduction of 14% (54) from 2012/13.
- 7.2 Road traffic incidents accounted for 18% of the total number of non-fire related incidents.
- 7.3 Flooding incidents reduced by 37% (119) in 2013/14 when compared against 2012/13. It is worth noting that the reduction in flooding incidents is almost twice the national average.
- 7.4 On the whole, the number of non-fire incidents has increased by 5% (103) in 2012/13, when compared against 2011/12.
- 7.5 The tables below details, by type, the non-fire related incidents comparing 2012/13 to 2013/14.

Type of non-fire incident Tyne and Wear	2013-14	Change from 2012/13 - 2013/14	Change from 2012/13 to 2013-14 in %
Road traffic incidents	334	-54	-14%
Non-road traffic incidents	1473	-363	-20%
of which:			
Lift Release	202	8	4%
Effecting entry/exit	177	-16	-8%
Flooding	200	-119	-37%
Animal assistance incidents	111	16	17%
Spills and Leaks (not RTC)	50	-8	-14%
Removal of objects from people	105	-4	-4%
Hazardous Materials incident	35	-1	-3%
Rescue or evacuation of persons from water	29	-9	-24%
Other	564	-230	-29%
Total non-fire incidents	1807	-417	-19%

Type of non-fire incident England	2012-13	Change from 2012/13 - 2013/14	Change from 2012/13 to 2013/14 in %
Road Traffic Incidents	27847	-77	-0.3%
Non-road traffic incidents	96797	-11079	-10%
of which:			
Lift Release	11170	-1476	-12%
Effecting entry/exit	15067	-209	-1%
Flooding	14387	-3516	-20%
Animal assistance incidents	4858	-26	-1%
Spills and Leaks (not RTC)	4157	-388	-9%
Removal of objects from people	4491	236	6%
Hazardous Materials incident	1841	-159	-8%
Rescue or evacuation of persons from water	1374	-322	-19%
Other	39452	-5219	-12%
Total non-fire incidents	124644	-11156	-8%

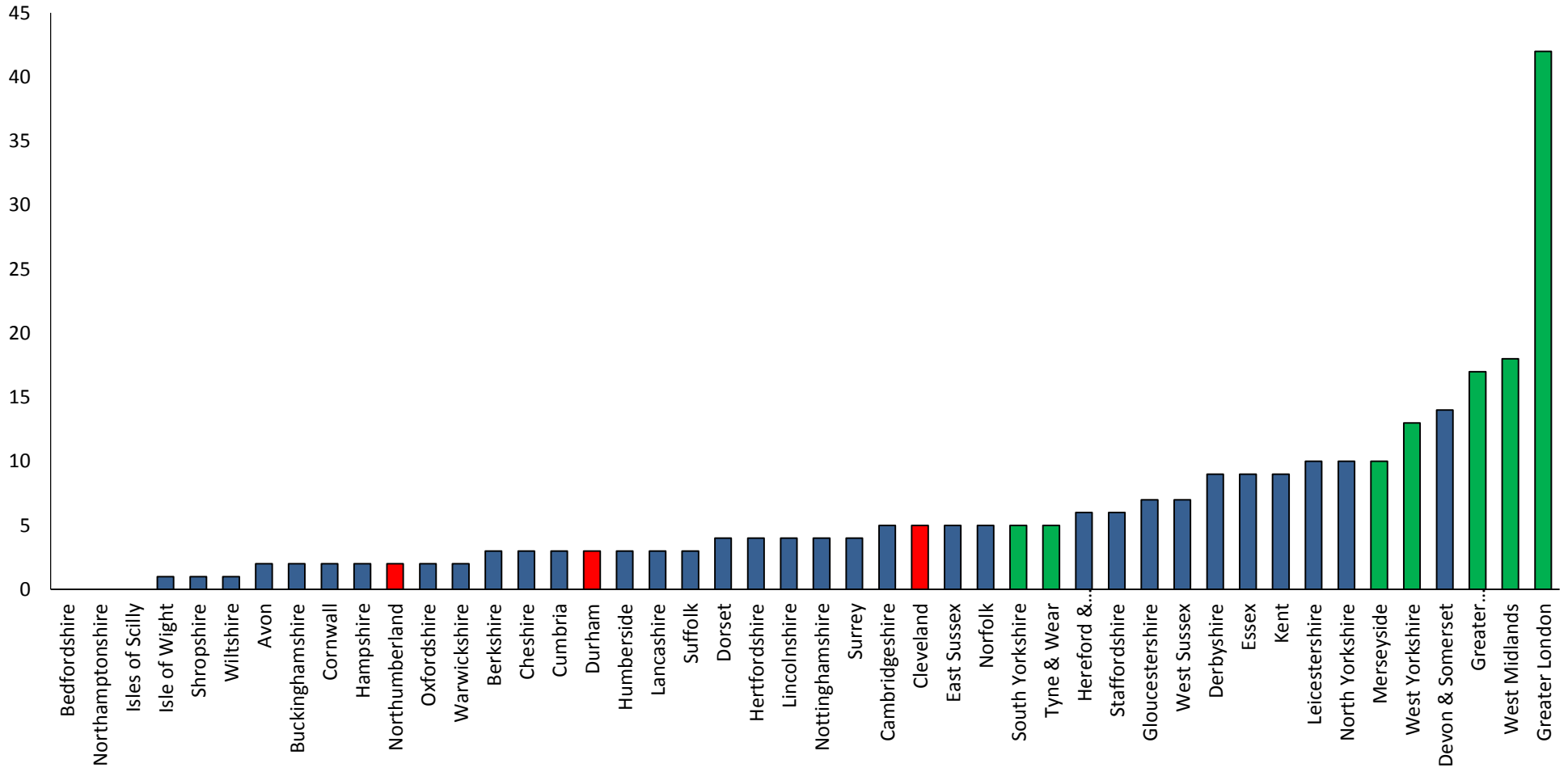
8 Comparison Against Other FRS

Non Fatal Casualties by FRS 2013/14



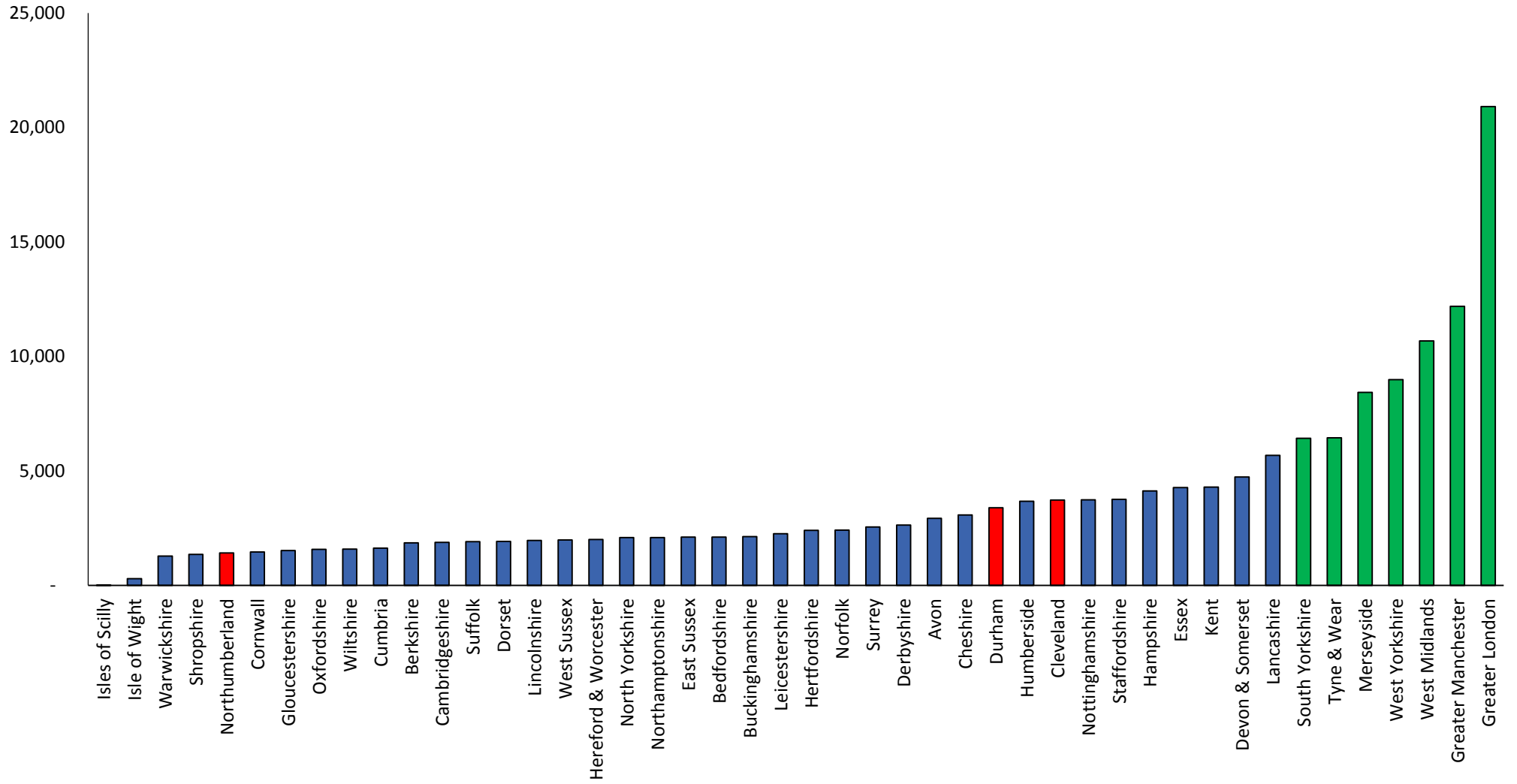
OFFICIAL

Fire Fatalities by FRS 2013/14



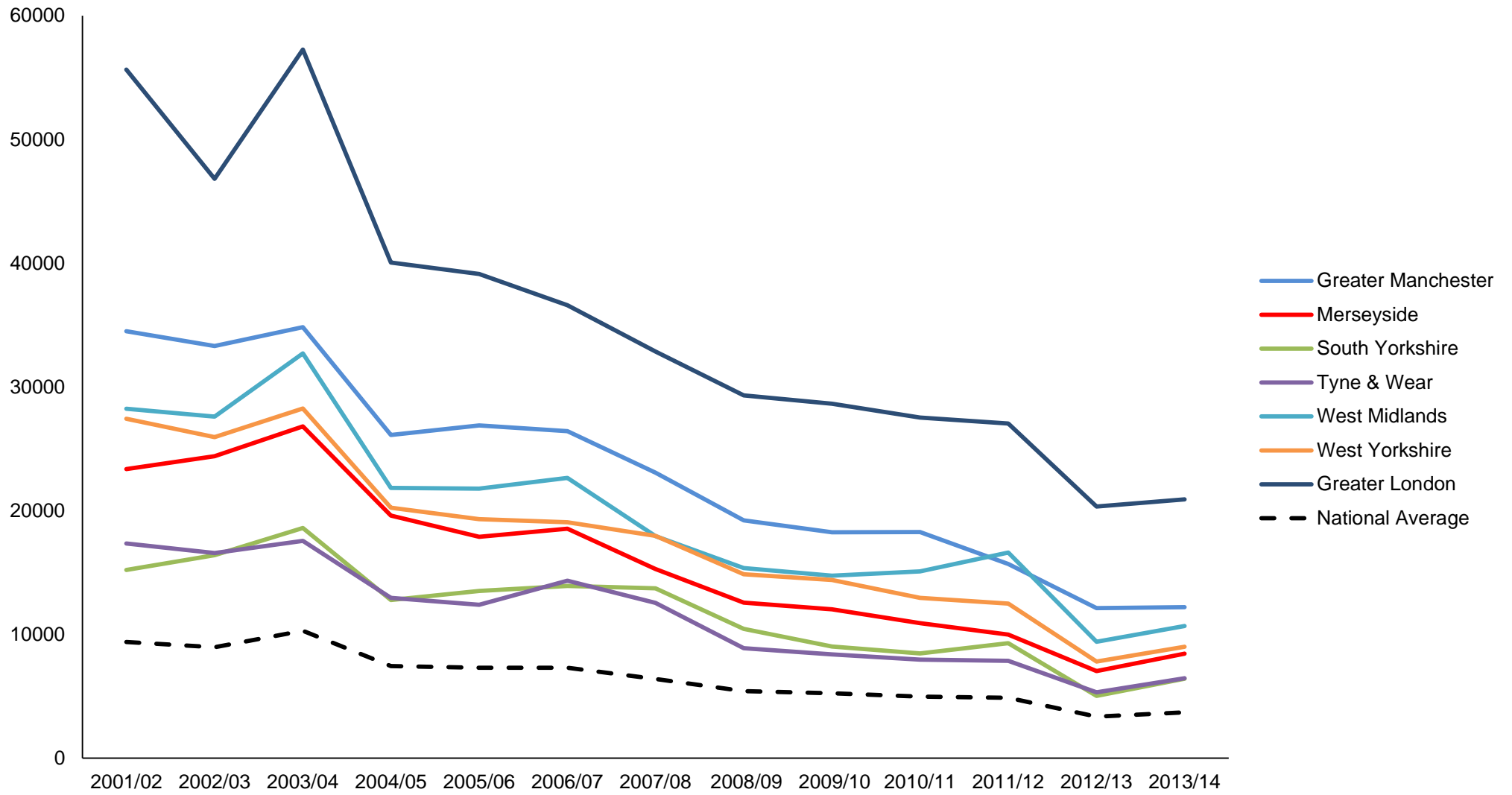
OFFICIAL

Fires by FRS 2013-14



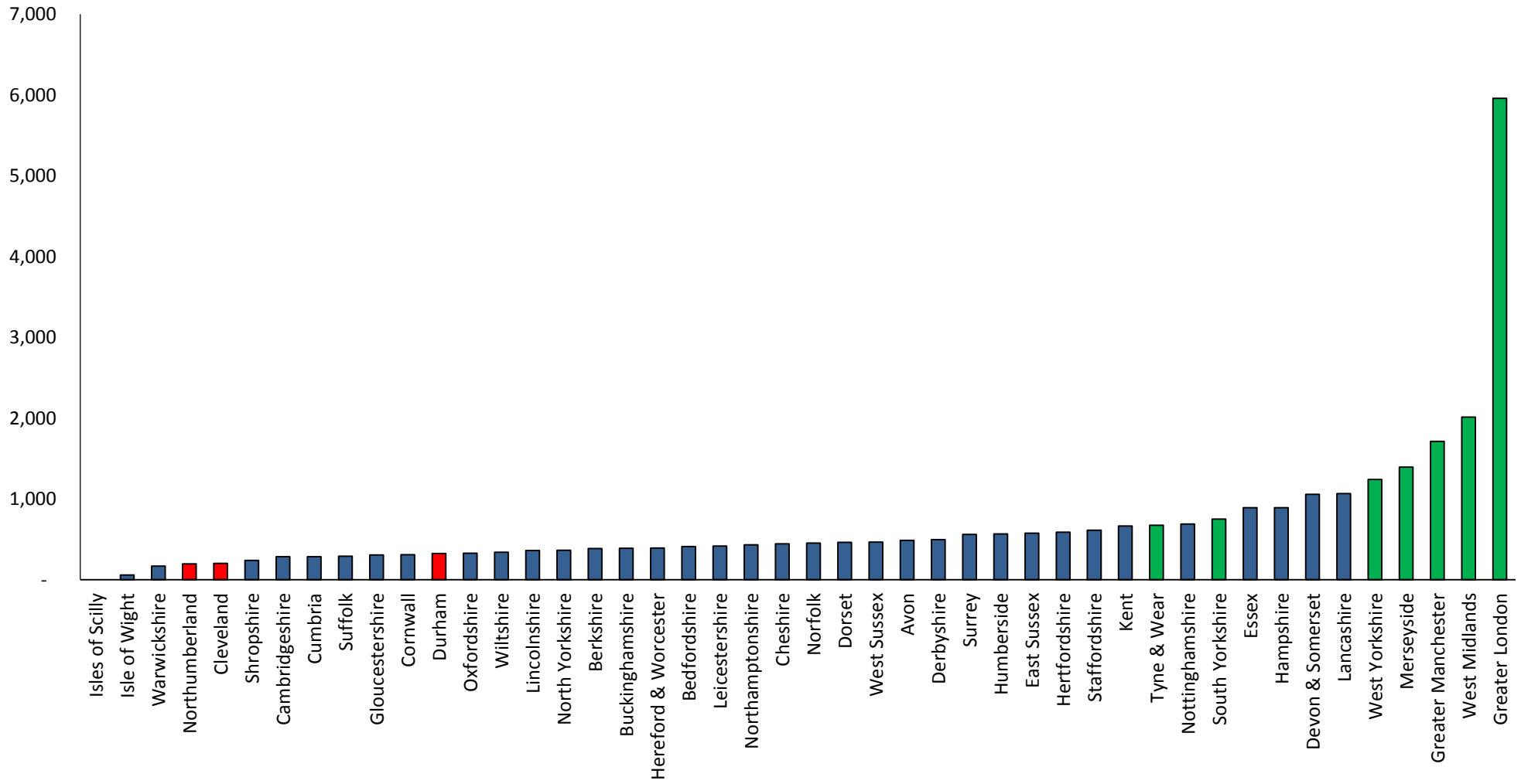
OFFICIAL

Fires attended per year by Met Authorities

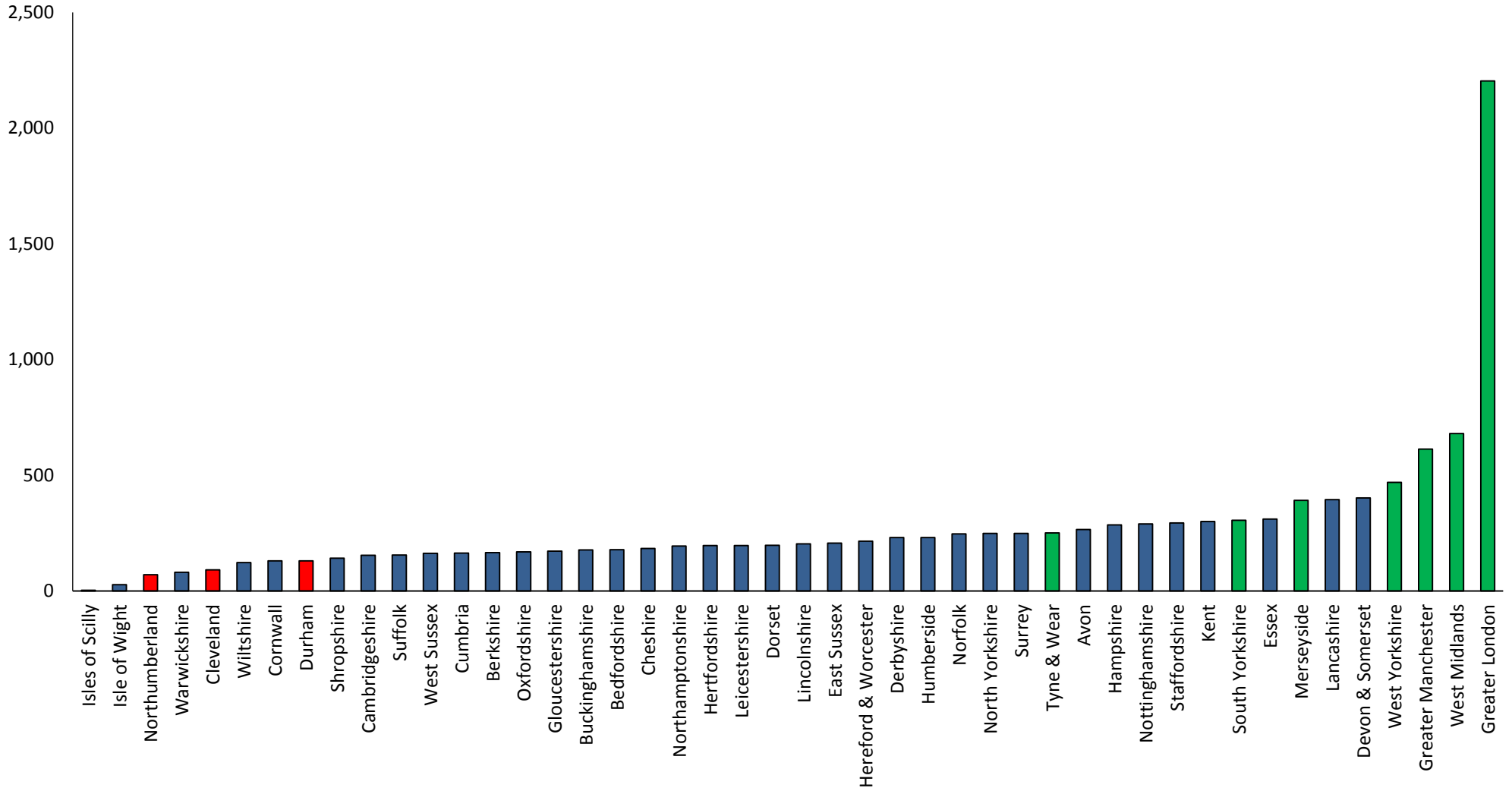


OFFICIAL

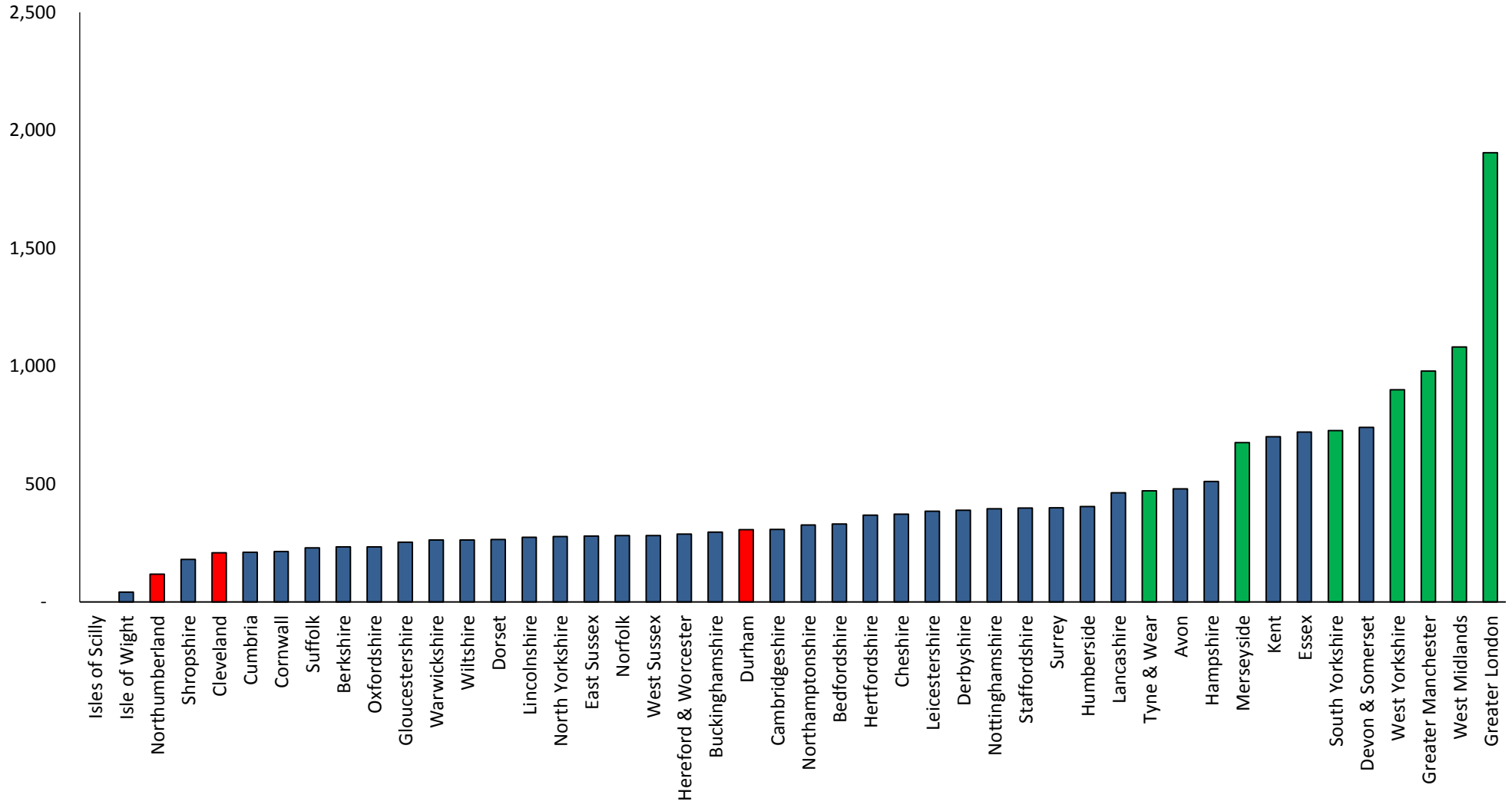
Primary Dwelling Fires by FRS 2013 - 14



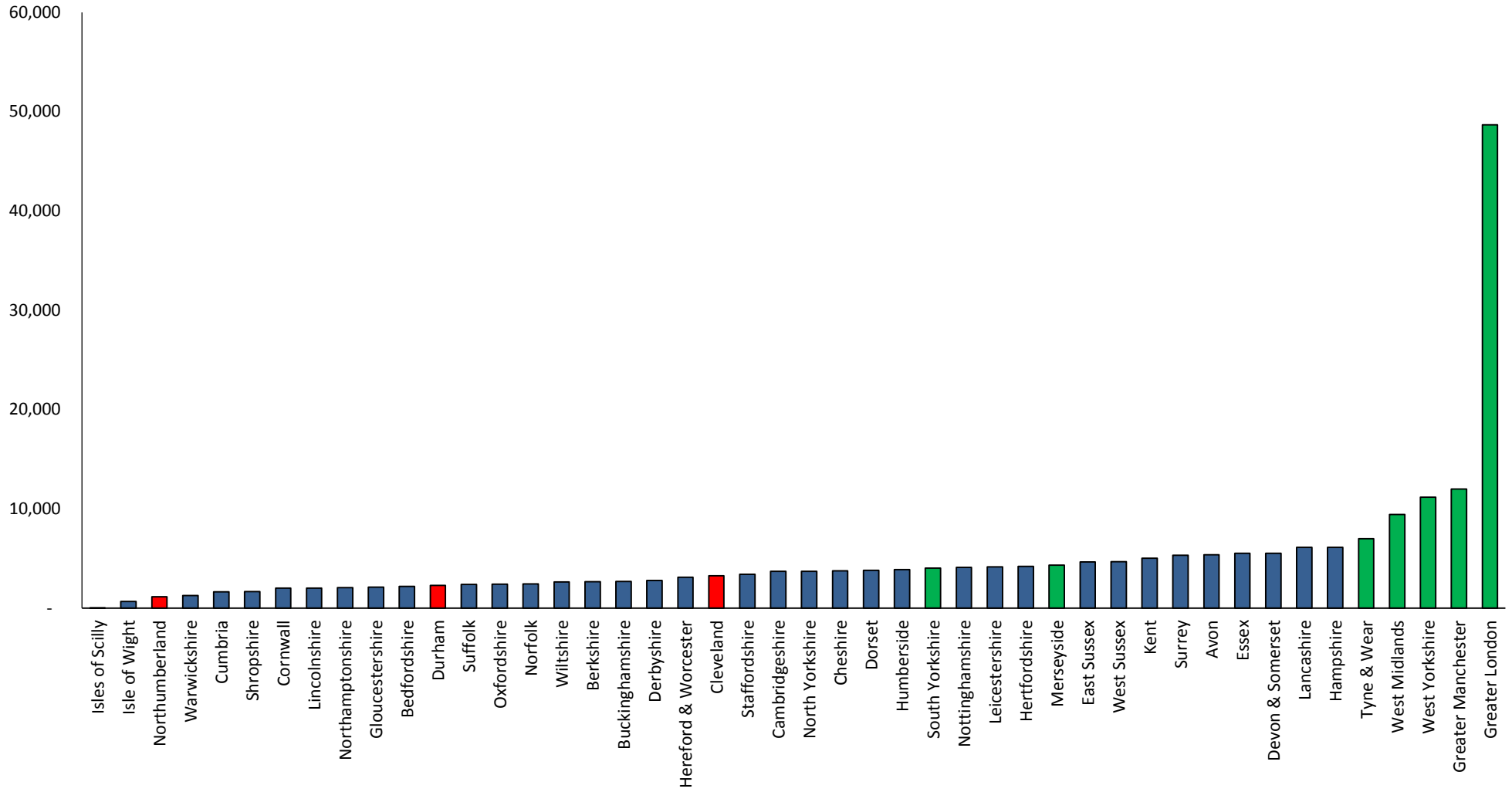
Primary Other Building Fires by FRS 2013 - 14



Primary Vehicle Fires by FRS 2013 - 14

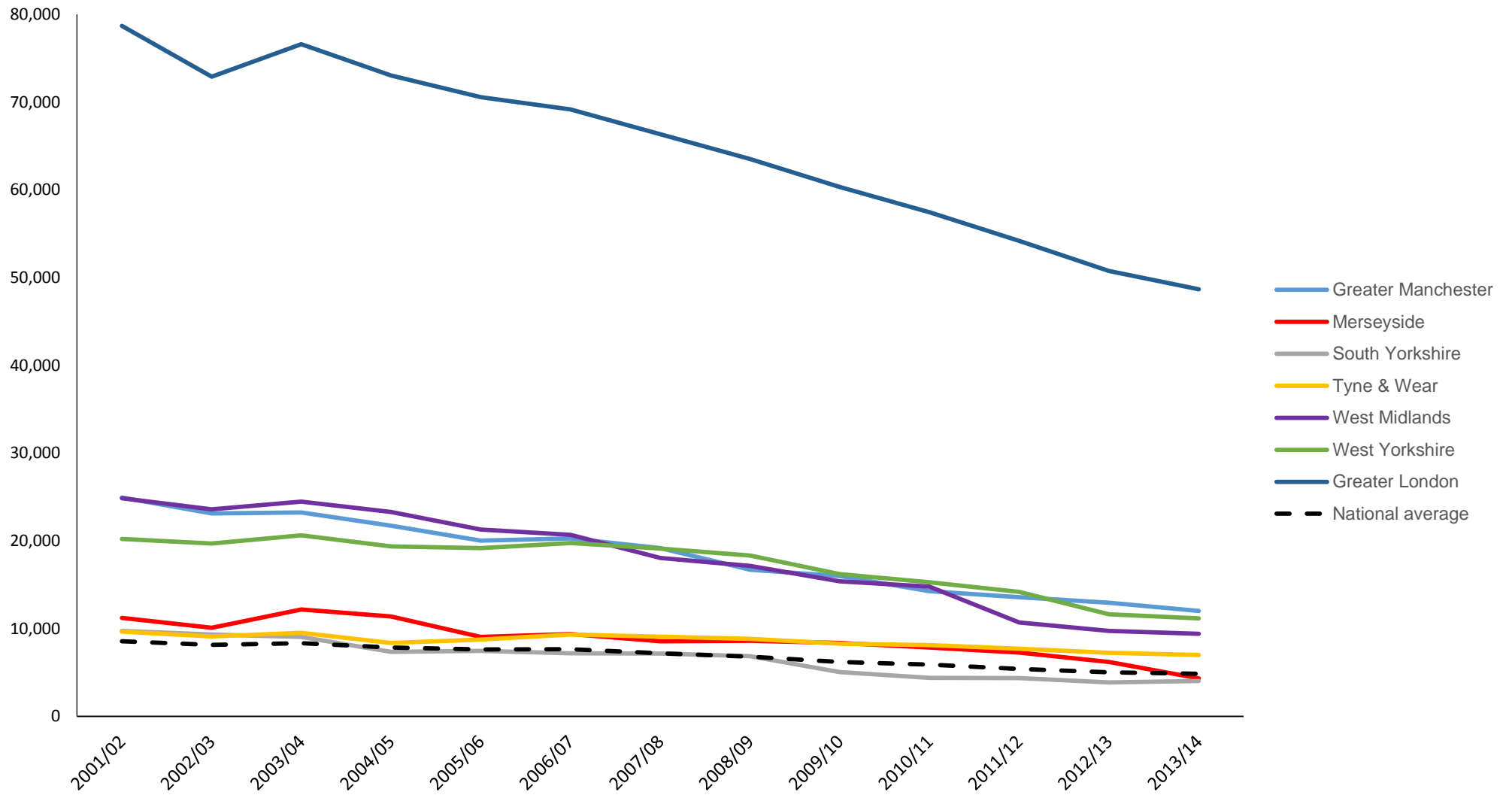


False Alarms by FRS 2013 - 14



OFFICIAL

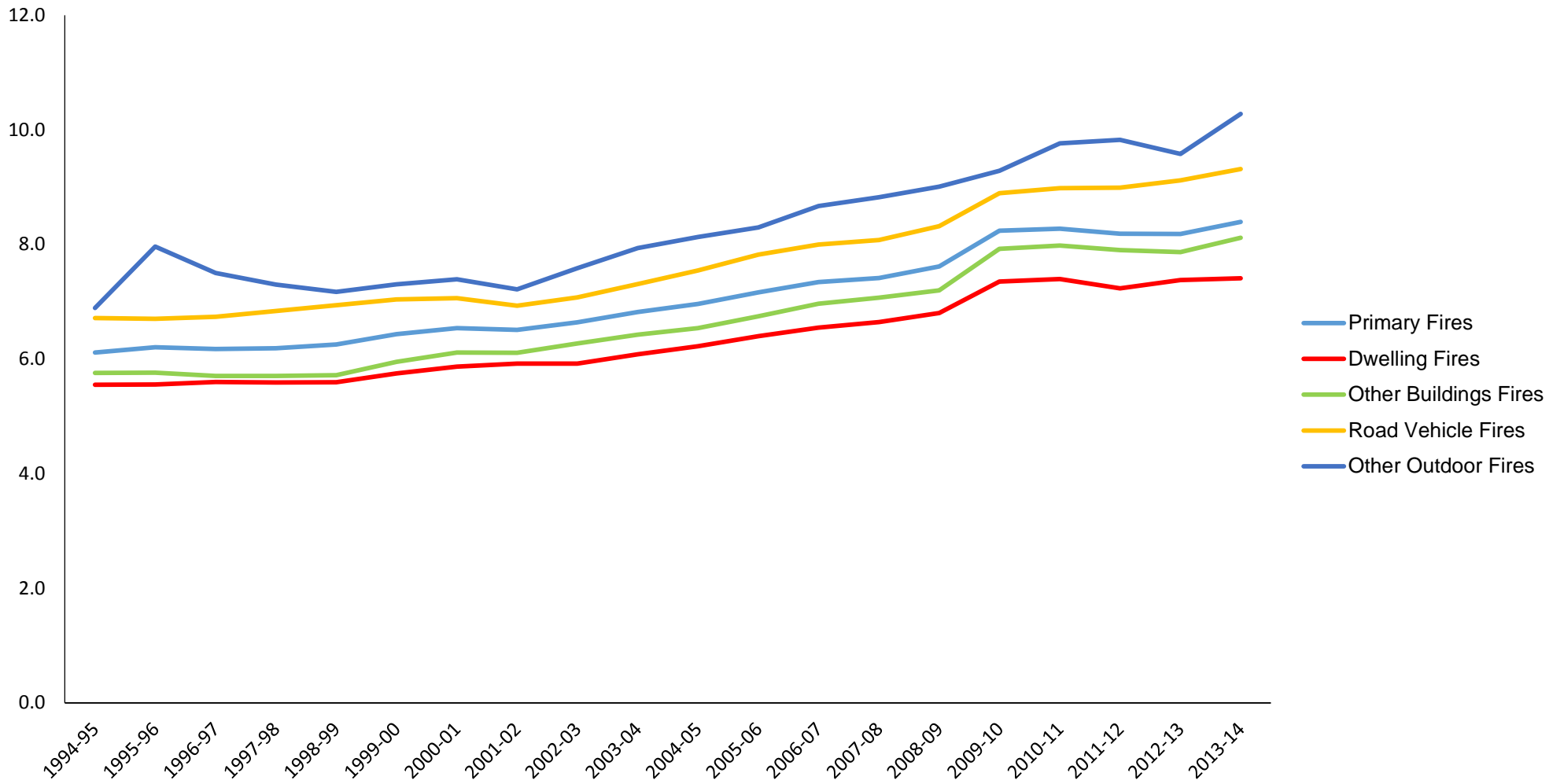
False Alarms attended by Met FRS's



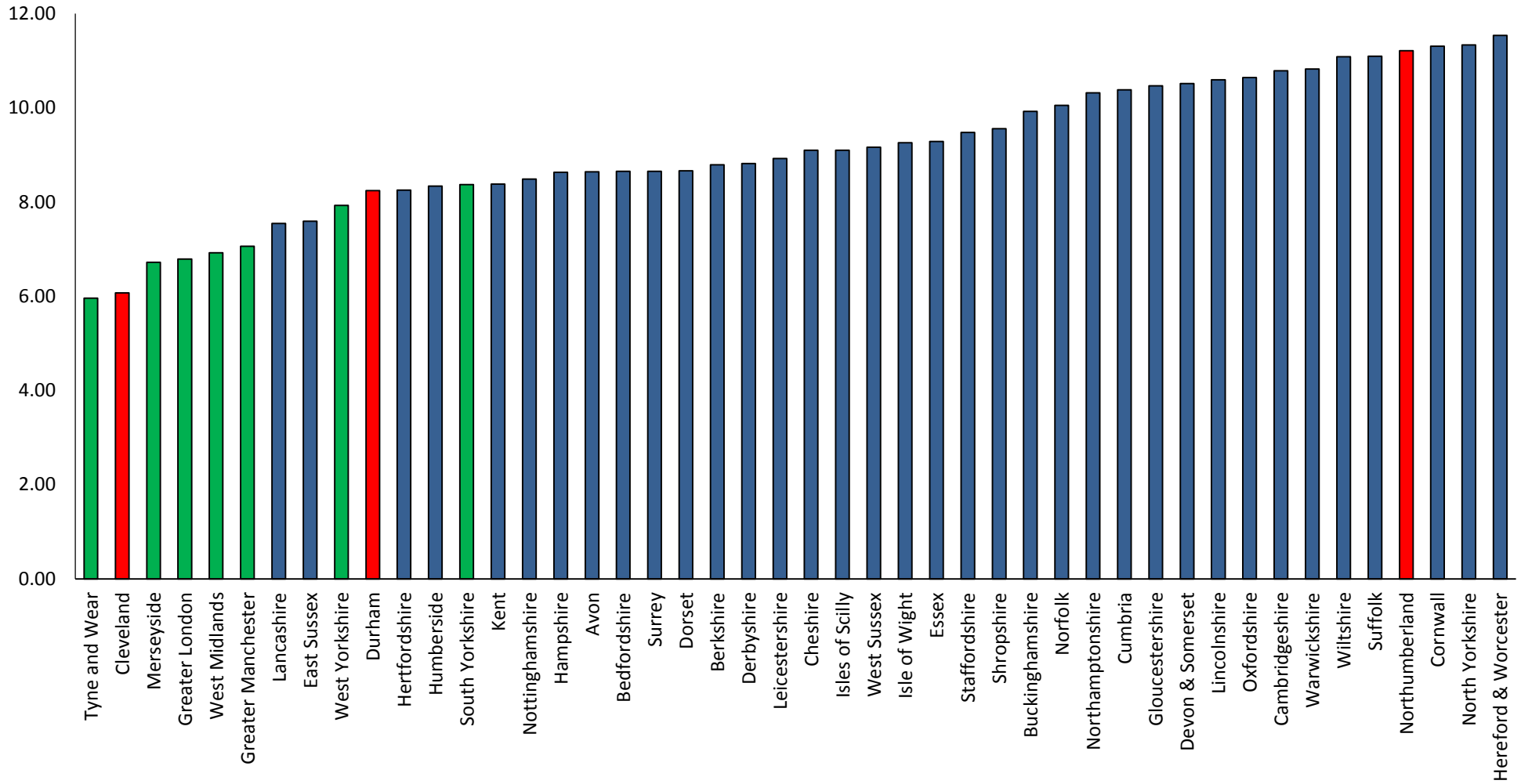
9 RESPONSE TIMES

OFFICIAL

Average National Response Times

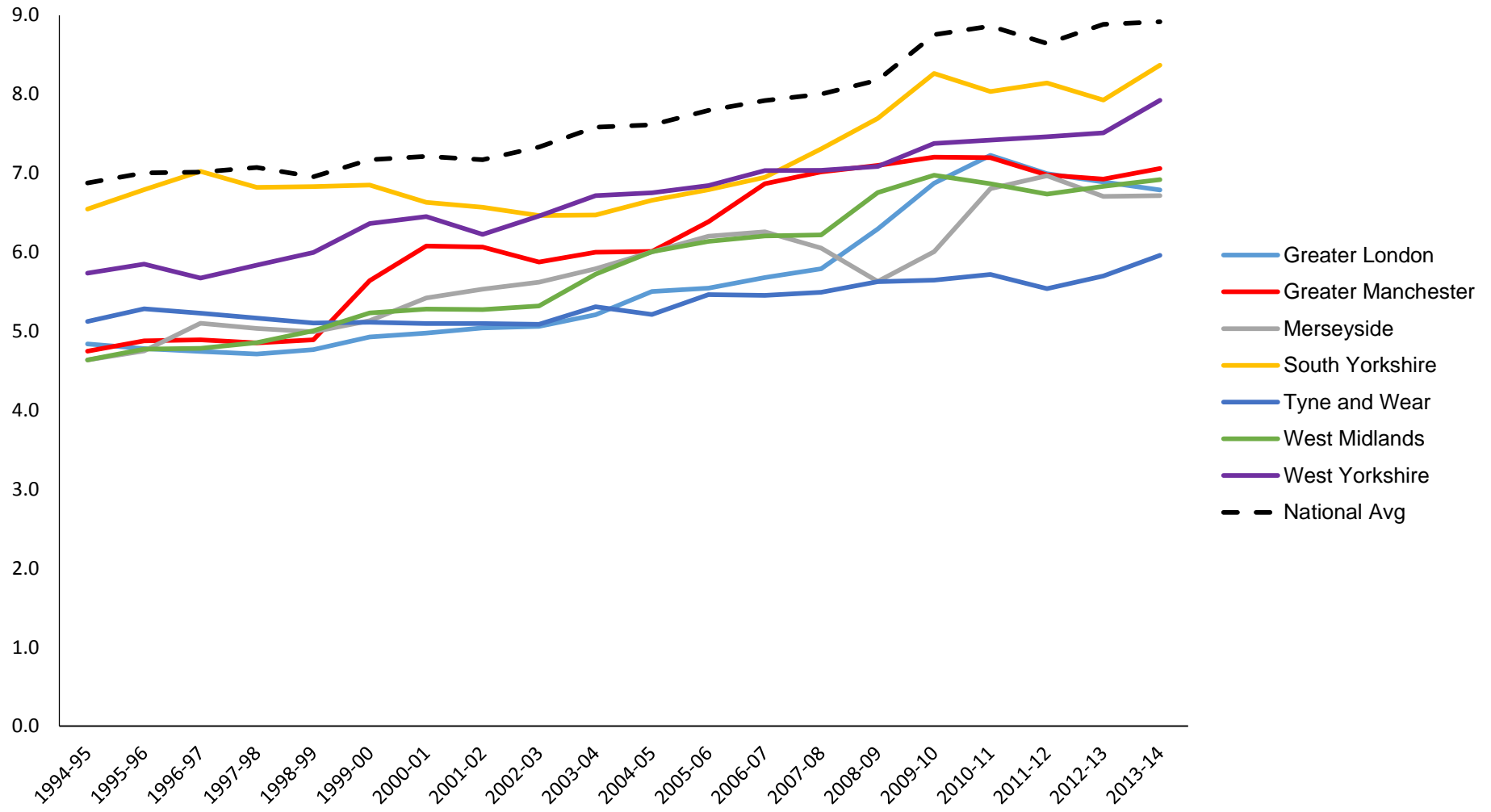


Average response time to primary fires (Minutes) - all FRS's 2013 - 14

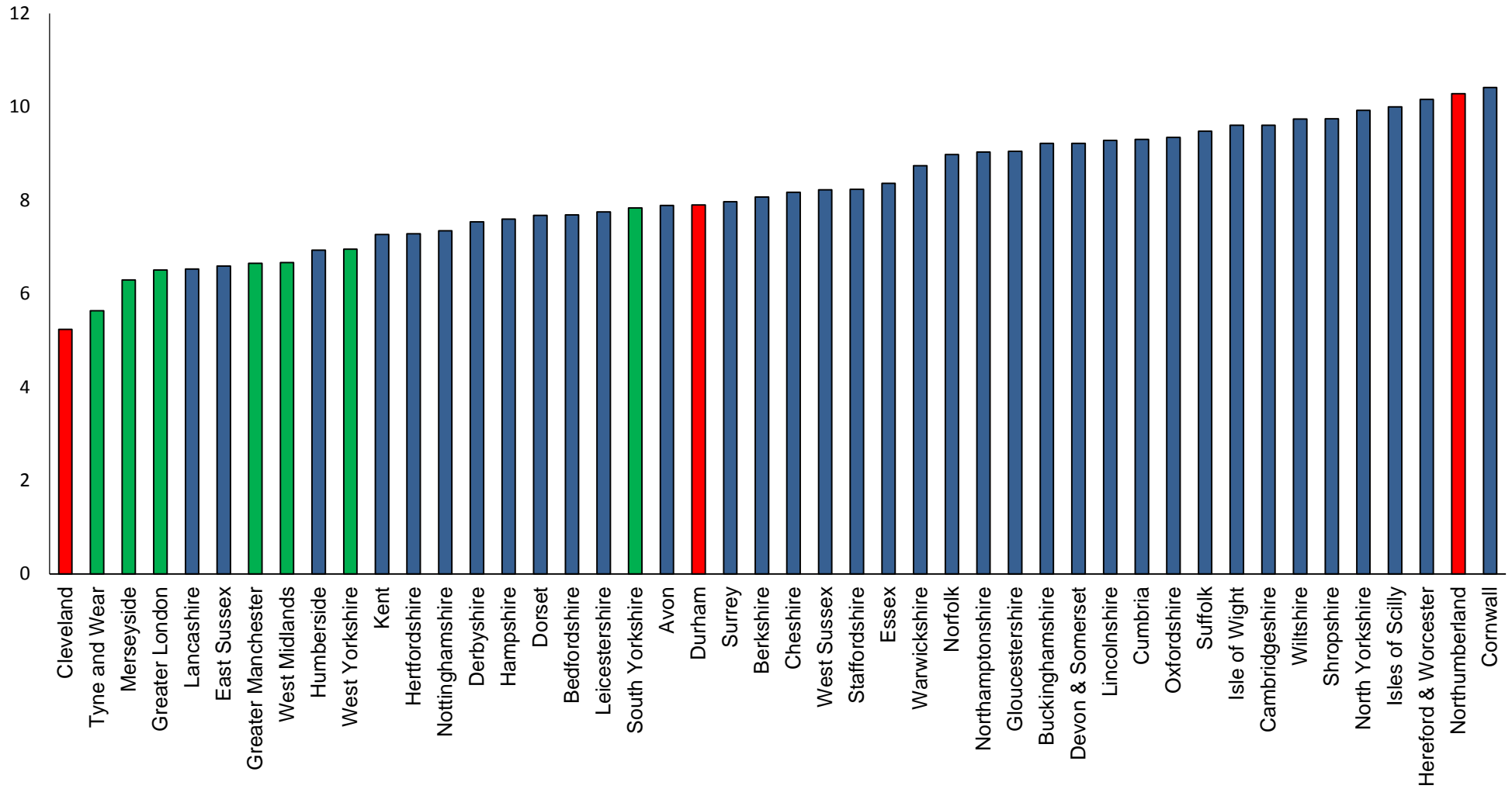


OFFICIAL

Average Response time: primary fires (Mets)

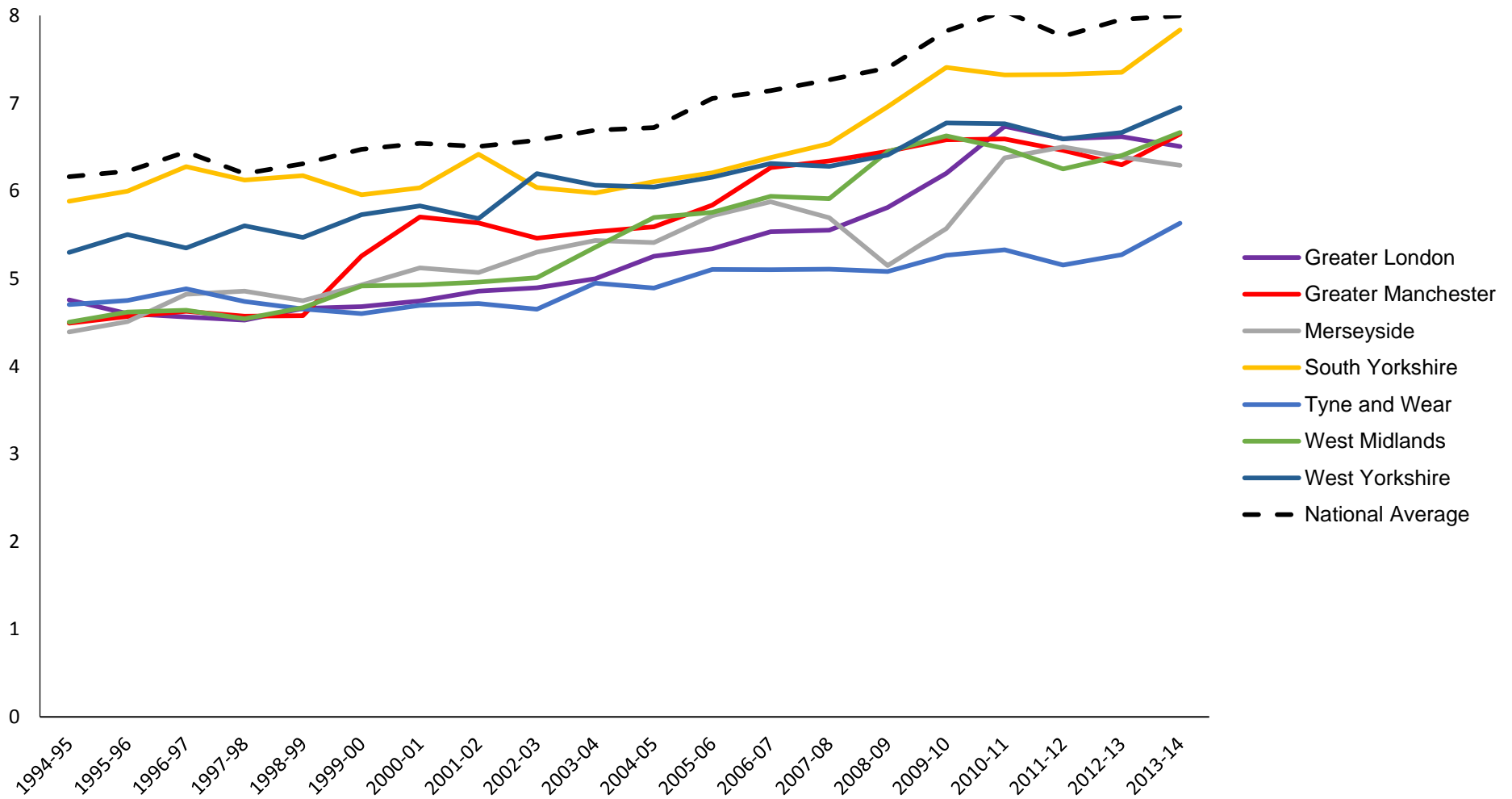


Average Response Time to dwelling fires (Minutes) - all FRS's 2013 - 14

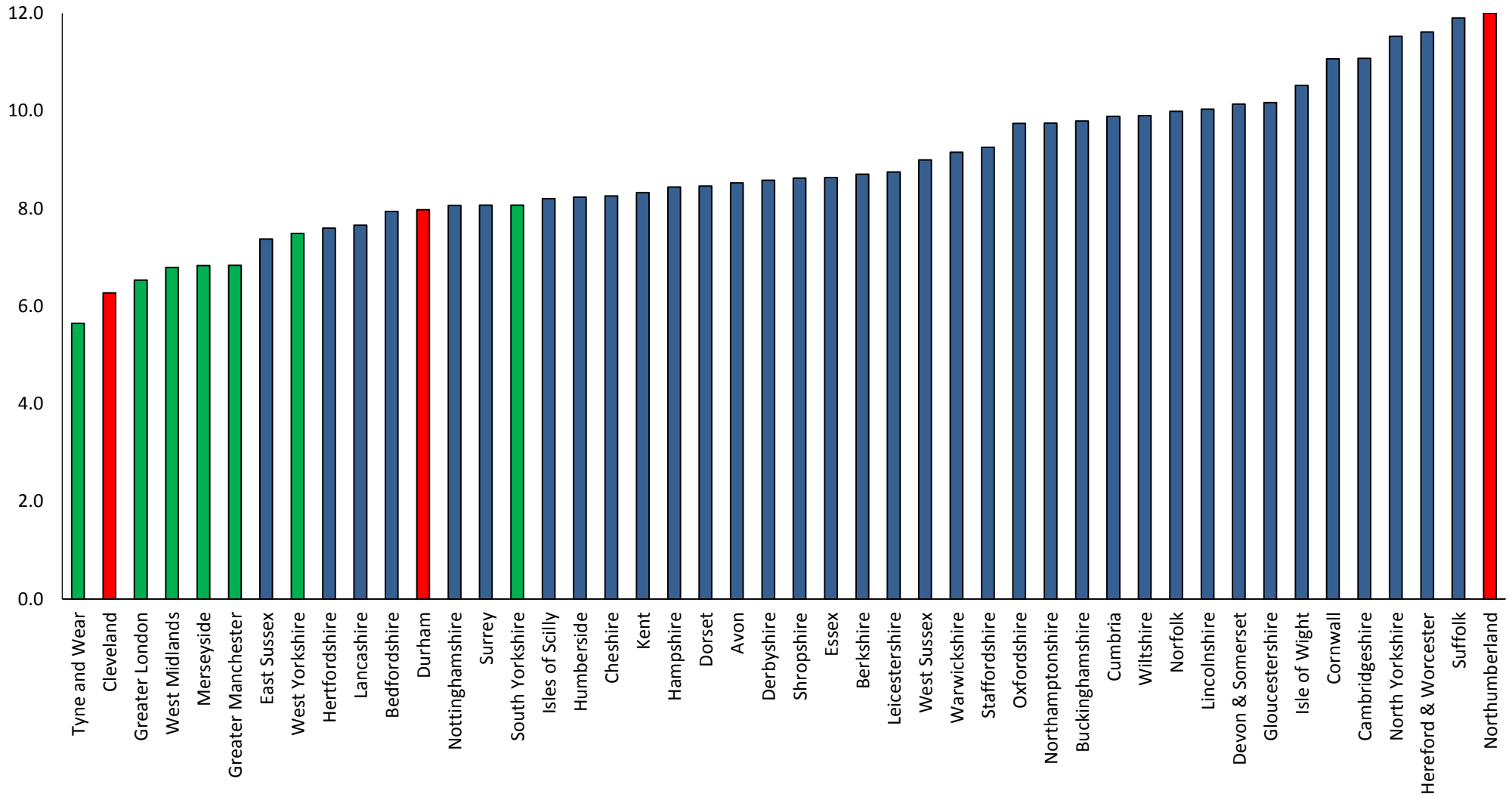


OFFICIAL

Average response time: dwelling fires (Mets)

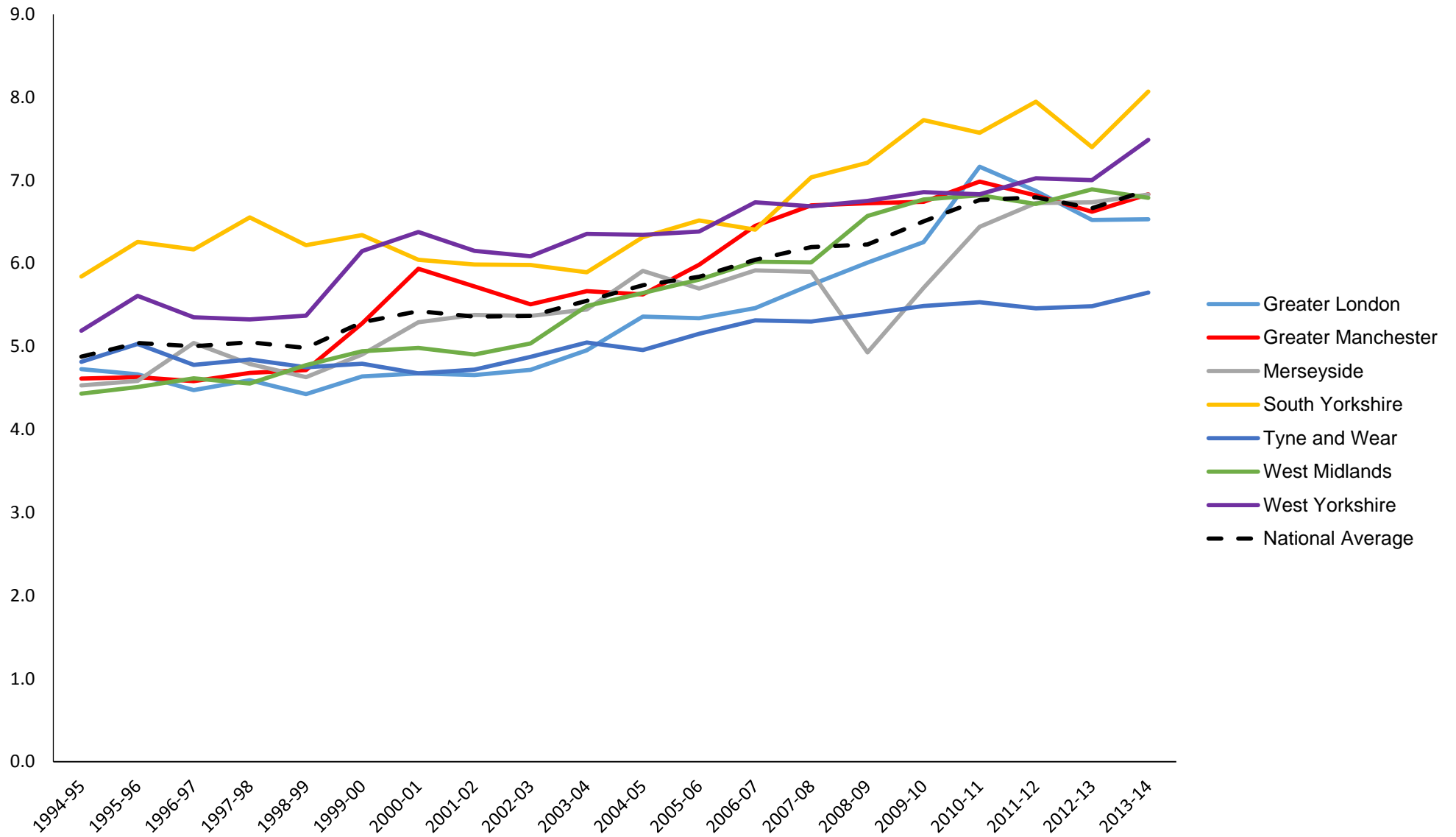


Average response time to other building fires (Minutes) - all FRS's 2013 - 14

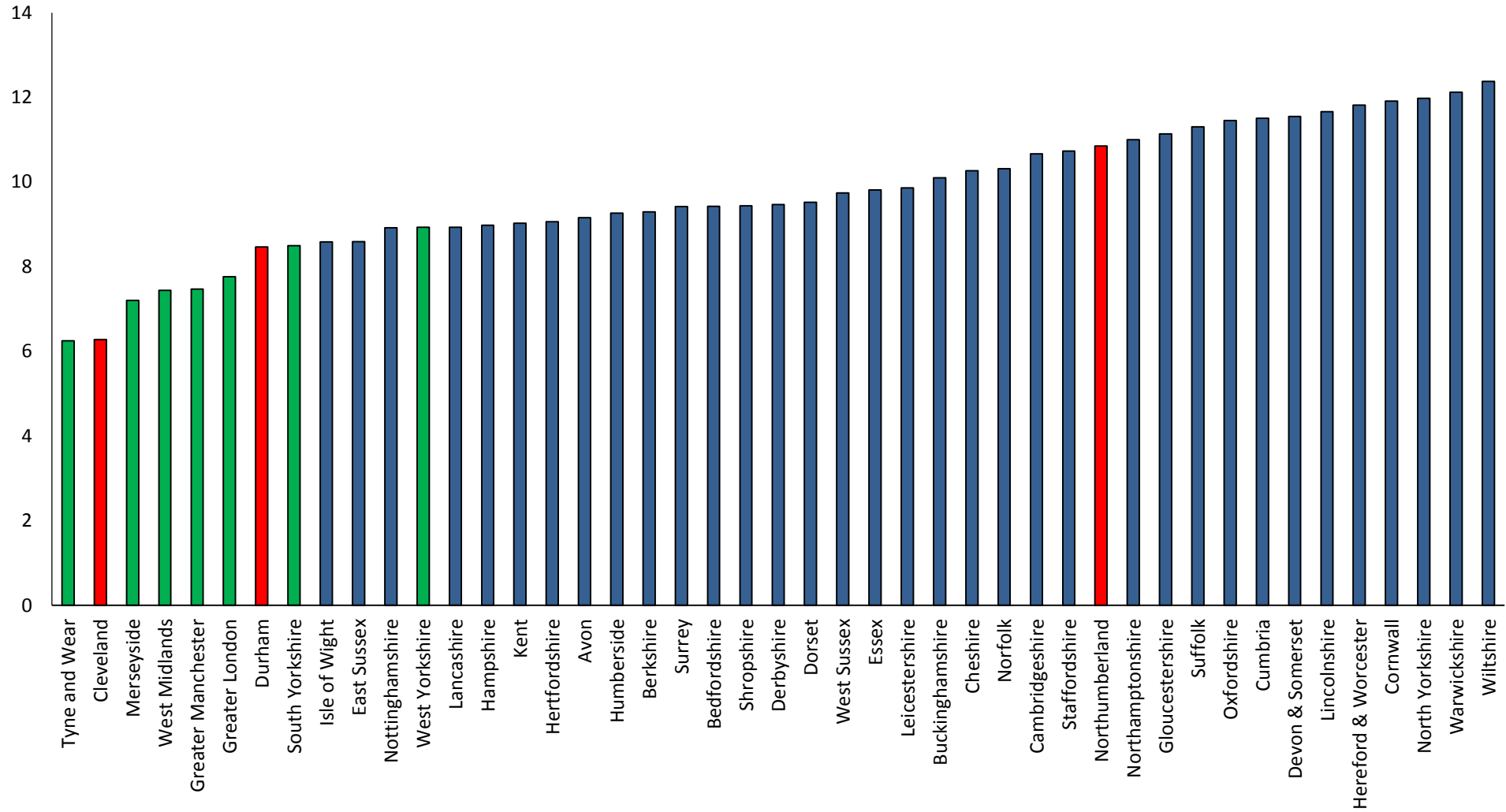


OFFICIAL

Average response time: other building fires (Mets)

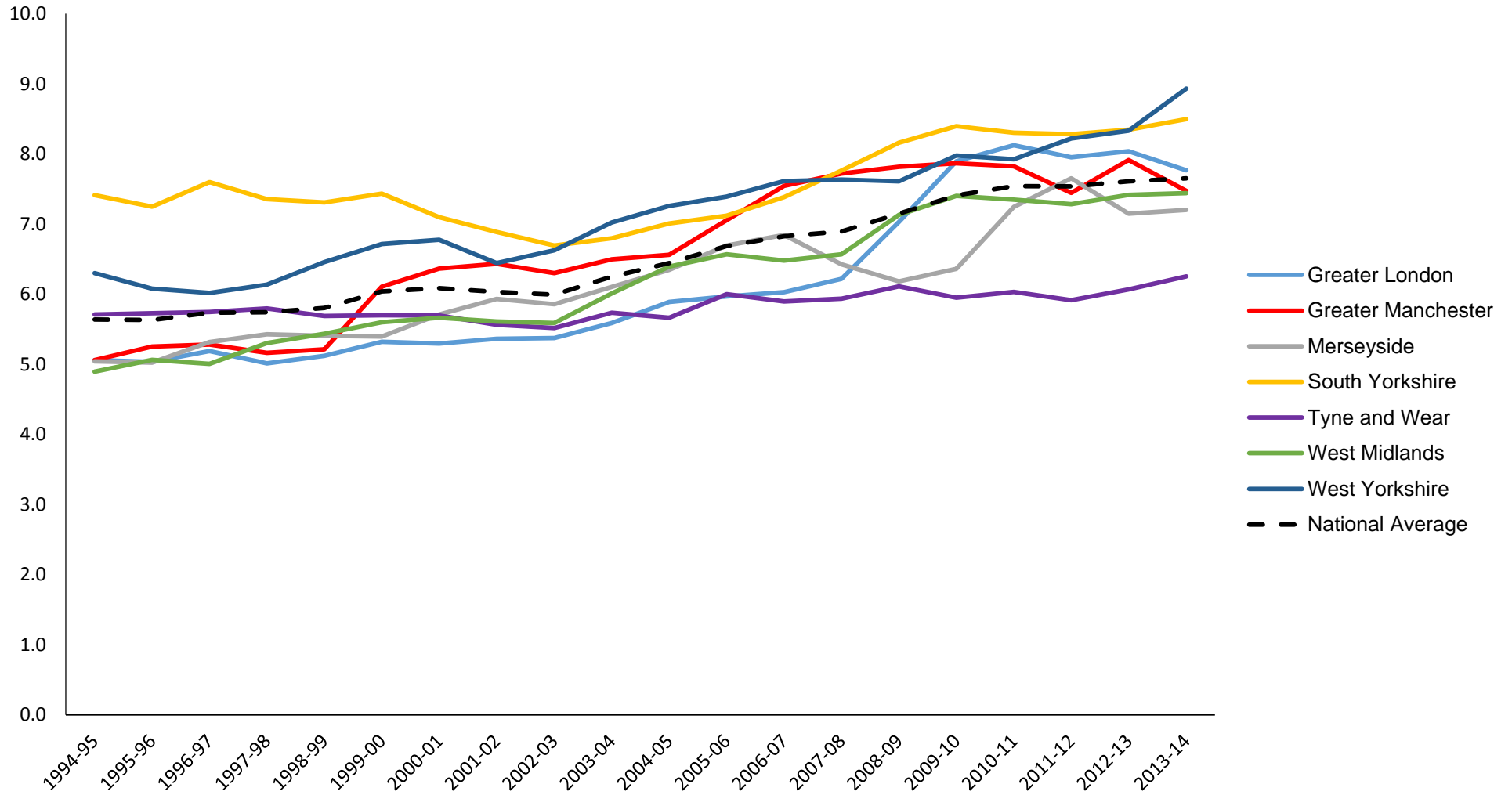


Average response time to vehicle fires (Minutes) - al FRS's 2013 - 14

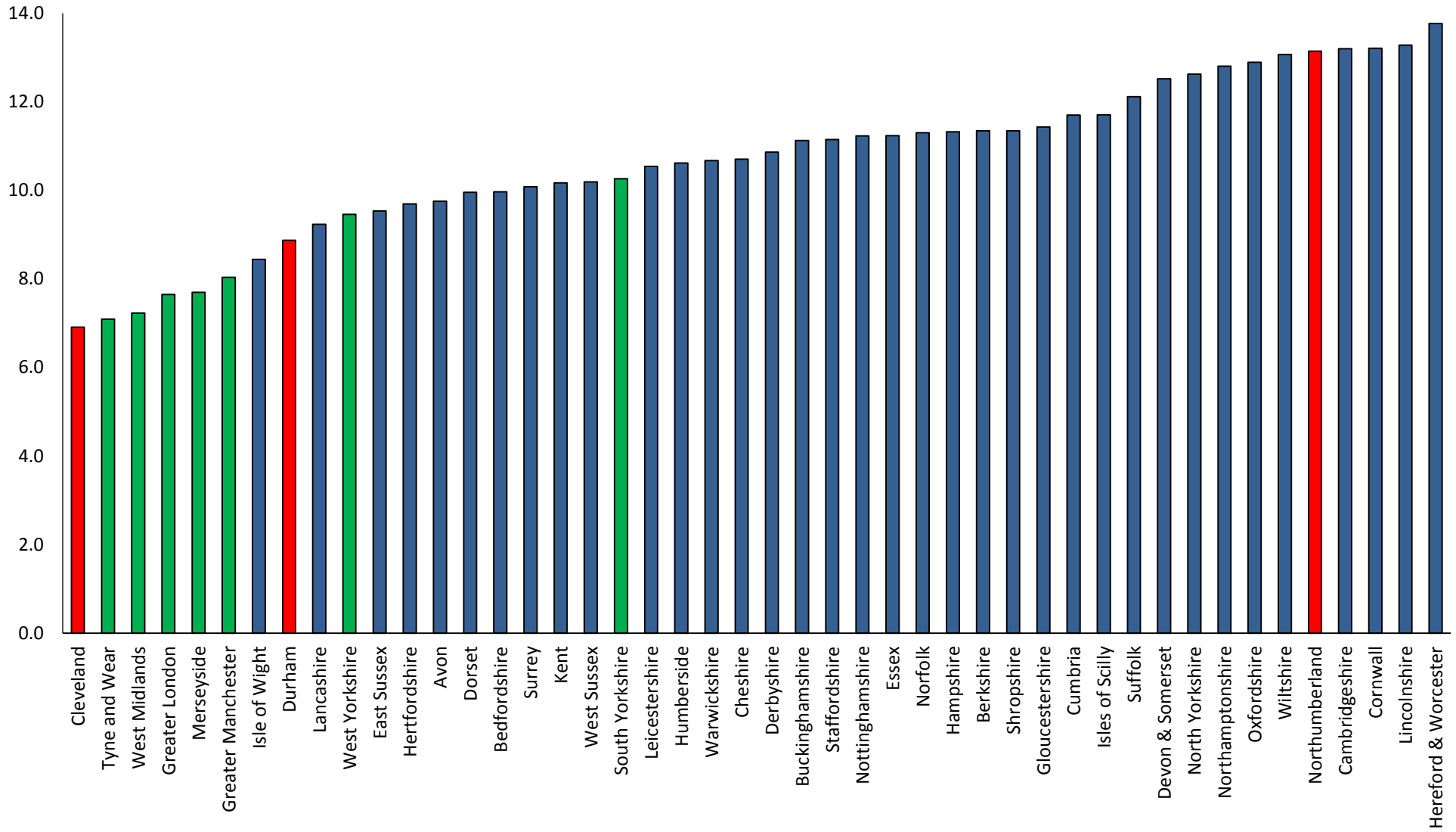


OFFICIAL

Average response time: vehicle fires (Mets)

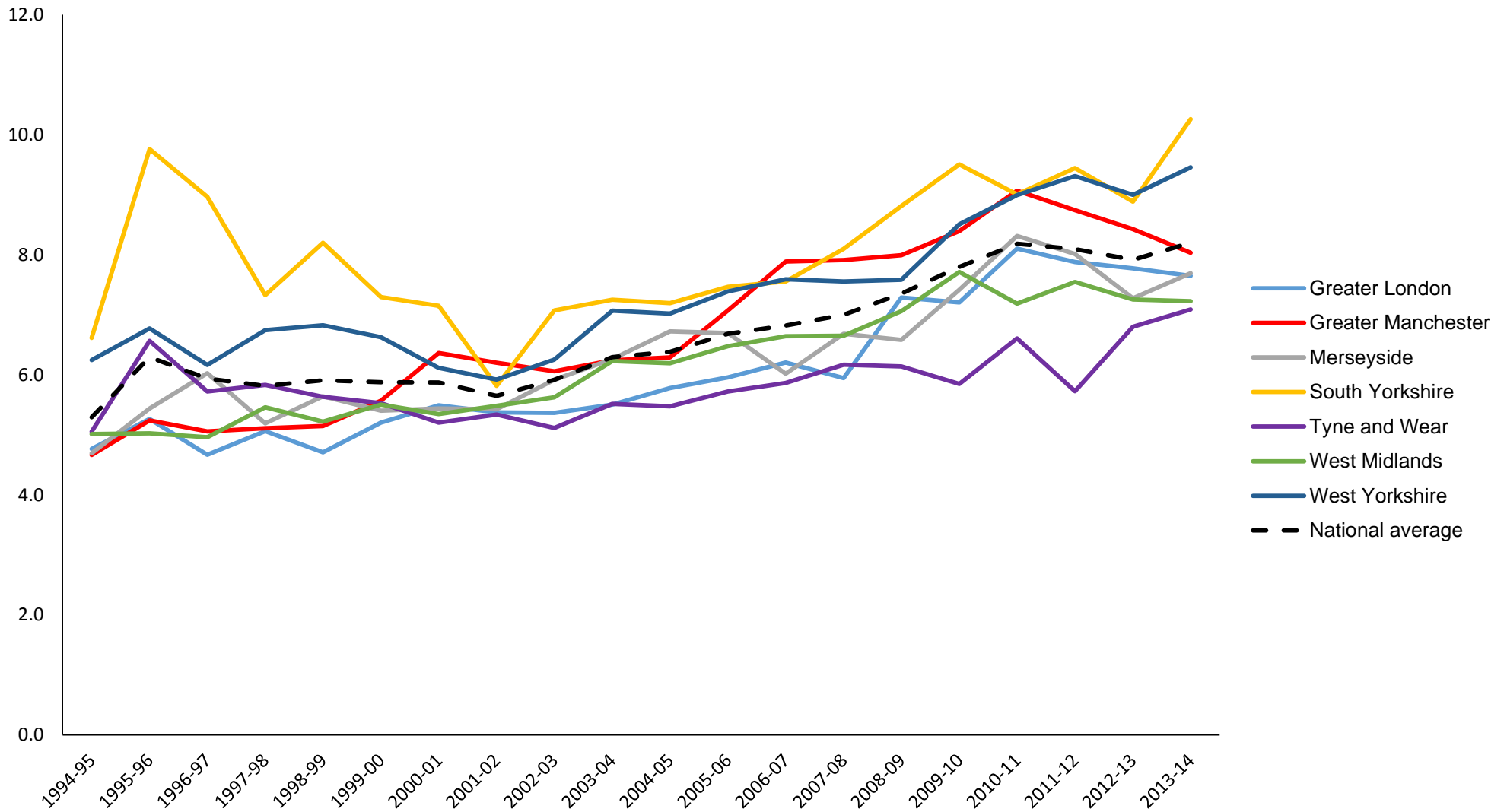


Average response time to outdoor fires (Minutes) - all FRS's 2013 - 14



OFFICIAL

Average response time: outdoor fires (Mets)



OFFICIAL