

## CORPORATE PARENTING BOARD March 2011

### REPORT OF: HEAD OF SAFEGUARDING

#### CHILDREN LOOKED AFTER: PERFORMANCE (1<sup>st</sup> April 2010 to 31<sup>st</sup> January 2011)

#### 1.0 Purpose of Report

1.1 The purpose of the report is to provide the Corporate Parenting Board with performance information relating to Children Looked After (CLA) for the period 1<sup>st</sup> April 2010 to 31<sup>st</sup> January 2011, with a particular focus on the end of the period. It also gives a detailed breakdown of the Children Looked After performance indicators via a Performance Grid.

#### 2.0 Background

2.1 The work of Children's Services Social Care in Sunderland is of critical importance to achieving good outcomes for the authority's CLA; to ensure that each and every child looked after is able to achieve their full potential.

2.2 Whilst the National Indicator Set for local authorities has now been removed, continued use of the indicators for the immediate future, provides a means by which Sunderland can (a) measure performance for its CLA, (b) compare performance to previous periods, and (c) flag areas for improvement.

2.3 The former National Indicator Set on which this report is based covers Placements, Placement Stability, Reviews, Care Leavers, Missing Children, Adoptions, Offending, Emotional and Behavioural Health, and Ethnicity.

#### 3.0 Context

3.1 Final performance information is submitted to the DfE annually in June, and thereafter follows a period of validation. The data provided in this report and in the Performance Grid is therefore subject to finalisation and validation, which can cause changes to the outcome.

#### 4.0 Methodology

4.1 This report and Performance Grid provides data on a cumulative basis from 01/04/10 where feasible, although some data is represented on a snapshot or rolling basis. The 'measure' is made explicit in each case, via the Performance Grid, to aid interpretation.

4.2 Colour-coding is used throughout the Performance Grid to indicate whether a target has been met or to indicate the direction of performance travel from the previous month. When colour-coding direction of travel, an interpretation has been made as to whether the move is positive, negative or neutral – the interpretation is entirely subjective and is open to further discussion. Green is positive, red is negative and grey is neutral.

#### 5.0 Summary of Key Points

5.1 By the end of January 2011:

- 394 children were looked after (69.2 per 10,000 children in the local population) – following a peak of 400 in July 2010.
- 74.11% (292 of 394) of all CLA were placed in foster care, and of those, 72.60% (212 of 292) were placed within the local authority boundary.
- 83.69% (118 of 141) of CLA aged 10-15 were in a family placement, increasing to 99.44% (178 of 179) for the under-10's.
- 59.39% (234 of 394) of all CLA were male, and 40.61% (160 of 394) were female.

- 91.62% (361 of 394) of CLA were experiencing a stable placement (less than 3 placements) – continuing to remain within target.
- 64.12% (84 of 131) of long-term CLA were retaining a stable long-term placement – the second consecutive deterioration in monthly performance.
- 100% of CLA had participated in their reviews.
- 97.38% (335 of 344) of all CLA cases that should have been reviewed, were reviewed on time.
- 63.81% (67 of 105) of all Foster Carer cases that should have been reviewed, were reviewed on time.
- 72.50% (29 of 40) of care leavers were in suitable accommodation.
- 47.50% (19 of 40) of care leavers were in suitable Education, Training or Employment.
- The self-assessment for children missing from home/care remained at 12 with further work being needed across a number of areas. Following a period of improving missing numbers, there was an increase during January.
- 54.17% (13 of 24) of children adopted were adopted within 12-months of the best interest decision. Those not adopted in timescale were either aged 5 and over or had complex needs.
- 8.68% (29 of 334) of children looked after for over six-months had an Adoption Order or Guardianship Order.
- 1.78 CLA offended for every one 10-17-year-old offender in the general population (Quarter 3).
- 13.12 (low mental health concerns) was the average mental health score for children aged between 4 and 16 who had their mental health needs assessed (by the end of December 2010).
- 4.82% (19 of 394) of CLA belonged to an ethnic minority population.
- 0.51% (2 of 394) of CLA were unaccompanied asylum seekers.

## 6.0 Children Looked After (CLA) Performance

- 6.1 CLA numbers remained relatively stable from November to December, then experienced an increase of six during January to 394. *\*It is important to note that these figures reflect a snapshot in time and are subject to change on a daily basis.*
- 6.2 Foster care remains the most common placement for CLA, with 74.11% (292 of 394) in this type of placement (remaining comparative to the preceding months). 72.60% (212 of 292) of foster care placements were within the LA boundary – a level typical of the previous months.
- 6.2.1 76.15% of LA provided foster care in is the LA boundary and 44.3% of agency provided foster care is in the boundary (from levels of 25% in the summer). From December-10 to January-11, a slightly lower proportion of externally provided placements have been in the boundary but this appears to be due to two children leaving the cohort.
- 6.3 The remaining two family placement options have changed slightly since December:
- 6.3.1 One more child placed with parents at 4.06% (16 of 394). This is the third-consecutive increase and reflects the highest proportions placed with parents since May's outturn of 4.60%.
- 6.3.2 Three more placed for adoption at 8.38% (33 of 394). Following a peak of 36 during October, the numbers of children placed for adoption has been reducing, but with a slight increase in the last month to 33. Of the 33 children currently placed for adoption, 17 are aged-5 and over, and it is this age group are that traditionally harder to place within 12-months - thereby directly impacting on the future performance of NI61 (see below).
- 6.4 The numbers of children placed in residential care has remained relatively stable throughout the financial year, changing by just one or two children each month. At the end of January 2011, 45 children were in residential care, equating to 11.42% of all CLA.
- 6.5 One child under-10 continues to be placed in a residential setting, meaning performance remains under 100% at 99.44% for those under-10 in family placements. The child this relates to is aged-8 and continues to be in a residential placement outside the boundary due to their exceptionally complex needs.
- 6.6 Currently, two children under-12 are placed residentially (a reduction of one in the last month and including the 8-year-old noted above), equating to a 98.99% family placement performance at the

end of January 2011, for this age group. Sunderland's children's homes are registered to accommodate only children aged-12 and over, and it is exceptional for children under-12 to be placed in external residential placements.

- 6.7 As children get older, there is a higher possibility that they will be cared for in a residential setting. This is reflected in the 10-15 age group where 23 children are placed residentially, taking the family placement performance up to 83.69%. The current performance therefore is an improvement on the previous month, despite remaining marginally under target.
- 6.8 The proportion of children looked after with PEP's cannot be validated at this time due to lack of recording on ICS - following some delays it is now anticipated that the Sunderland Virtual School Team will make the data available on ICS by March. Recent provisional data received suggests that performance may not be at 98% as previously through - the Performance Grid has therefore been amended to reflect this.
- 6.9 (NI 62) The actual number of children that have experienced three or more placement moves has remained stable at 33 over the last two-months - the percentage however is better at the end of January due to the increase in total CLA number. At the end of January therefore 8.38% of CLA had experienced three or more placement moves. Despite remaining within target, current performance continues to reflect the high demand for placements and under-capacity within the system (the Foster Carer Recruitment Strategy is being developed to counteract the impact on this indicator).
- 6.10 (NI 63) For those children aged under-16 in long-term placements, 64.12% (84) continue to retain a stable long-term placement, which is the second-consecutive deterioration in monthly performance. The measure therefore remains under the 75% target.
- 6.10.1 For those aged-16 and over, the percentage decreased to 43.64% (24/55) at the end of January 2011. This reflects the second-consecutive decrease in performance for this age group.
- 6.10.2 Current performance reflects the high demand for placements and the under-capacity within the system - the Foster Carer Recruitment Strategy is being developed to counteract the impact on this indicator.
- 6.10.3 In Sunderland, a decision to move a child is taken on a case-by-case basis, and is made in line with the child's best interests (i.e. to bring siblings together) – such positive moves however do have a negative impact on this particular indicator, making it one of the most challenging indicators in the set.
- 6.10.4 A suggestion has been raised to develop a local indicator which could provide a better understanding of placement quality, and which could lend to better explain performance changes across NI63 – it is recommended that this is investigated as part of the wider outcomes framework.
- 6.11 There have been no recent school moves as a result of a placement (this measure excludes those that moved as a result of an adoption placement).
- 6.12 LA participation in reviews continues at 100% (777 of 777) for those eligible to participate. Since April, more than half (54.83% / 426) have physically attended their review. Breaking this down:
- 52.90% physically attended and spoke for themselves
  - 1.67% physically attended and had an advocate speak for them
  - 0.26% physically attended and conveyed their views symbolically (non-verbally)
  - 41.57% did not physically attend but briefed an advocate to speak for them
  - 3.60% did not physically attend but conveyed their feelings by a facilitative medium.
- \* Figures include participation at each review that takes place, regardless of how many reviews a child has in the period.*
- 6.13 (NI 66) The percentage of children looked after cases which should have been reviewed during the year ending 31 March 2011 that have been reviewed on time, has been improving monthly as more

children enter the denominator. There was a slight deterioration however by the end of January taking performance from 97.71% to 97.38% (335 of 344).

- 6.14 From April-10 to January-11, 63.81% (67 of 105) of Foster Carer Reviews took place within timescale (at least every 12-months). Of those that were outside of timescale, 20 had agreed extensions (most for less than 3-months) and 18 are awaiting completion/recording (more than half of the latter are less than three-months overdue, although one is nine-months overdue).
- 6.15 (NI 147 and NI 148) Performance for care leavers in suitable accommodation and EET are both under target at 72.50% and 47.50% respectively, and have both experienced a performance decrease on the previous month.
- 6.15.1 The situation remains that the individuals in this particular cohort have proven very difficult to engage, with several refusing contact. The small numbers within the cohort mean that an individual's failure to engage impacts greatly on the figures.
- 6.15.2 Care leavers over-18 are entitled to be offered a statutory Leaving Care Service but it is not a statutory requirement that they maintain contact if they do not wish to do so.
- 6.15.3 There is also an issue with young people not involved with the Leaving Care Service but whom are included in the cohort i.e. one young person is in a psychiatric hospital and is no longer an open case, another young person has not been referred. This obviously has an impact on the figures which it is not possible to address.
- 6.15.4 There have been some positive outcomes of young people previously not in contact and NEET, making contact and engaging in training. Unfortunately this is not reflected within the figures due to their window closing prior to this.
- 6.16 (NI 71) The self-assessment at the end of January 2011 remains at 12 from a possible 15. To raise the rating, further work is needed in the areas of (i) Local procedures to meet the needs of runaways, (ii) Protocols for responding to urgent/out of hours referrals, and (iii) Local procedures including effective needs assessment protocols.
- 6.16.1 Work is ongoing to track those missing in order to offer them services - and the chart in the Performance Grid shows missing activity as defined by Northumbria Police for January 2011. The chart shows an increase in missing activity in January – 37 children went missing 54 times in total.  
*\*Missing data is currently based on Police definitions and data has been provided by Northumbria Police.*
- 6.17 (NI 61) In the last month, one-additional child has been adopted in timescale, taking the percentage from 52.17% to 54.17%, and equating to 13 children adopted in timescale since April.
- 6.17.1 In the same period (since April), 11 children have been adopted outside of the 12-month best interest decision - and as previously explained, ten of those were aged-5 and over at the time of the adoption (seven were aged-7 and over) - and one was a child with complex disabilities placed at the age of 2-years.
- 6.17.2 With more than half of all children currently placed for adoption aged-5 and over, a continued performance under target could be experienced. However, it is predicated that more children aged under-one will enter the cohort before the end of the financial year.
- 6.18 8.68% (29 of 334) of children looked after for over six-months had an Adoption Order or Guardianship Order.
- 6.19 (Offending whilst Looked After) At the end of the period April to December there were 189 CLA for 12months+, of which 19 of them were offenders. This gives a cumulative offending rate of 10.05% for CLA, compared to 5.66% for the general 10-17 population in Northumbria. Thus, there were 1.78 CLA Offenders for every one 10-17-year-old offender at the end of the Quarter 3, compared to 1.21 and 1.15 in the two previous Quarters.
- 6.19.1 Figures are based on a potential cohort, which won't be finalised until March 2011.

- 6.19.1.1 This indicator is already worse than the outturn last year with one quarter to come. 15 of the 19 were living in children's homes at the time of the offence though the majority of the offences took place outside the home and were not reported by staff.
- 6.19.2 A recent Freedom of Information Request revealed that between 2003 and 2011, 931 individual children became looked after (on one or more occasion) and 217 of those had been convicted of a crime. Of the 217 with a criminal record, 37% (81) gained their first conviction after they became looked after and, of these, 38.3% gained that conviction during the first 6 months of being in care.
- 6.20 Emotional and Behavioural Health of CLA) - Performance at the end of Quarter 3 remained relatively stable at 13.12, indicating low mental health needs of CLA on average (72.25% had low mental health needs scoring 0-16, 12.04% had borderline mental health needs scoring 17-20 and 15.71% had higher than average mental health needs scoring 21+).
- 6.20.1 A score above 16 indicates the beginning of mental health concerns). Those scoring 17+ (borderline mental health needs) are offered a mental health appointment.
- 6.20.2 The score is derived from an average of completed questionnaires, each containing 25 questions rated relating to Emotions, Conduct, Hyperactivity, Peer Problems and Pro-social Behaviour – the total of which gives a score of 0-40.
- 6.21 At the end of January 2011, there were two CLA who were unaccompanied asylum seekers - an increase of one child since December.
- 6.22 19 of 394 (4.82%) of children looked after are from an ethnic minority.

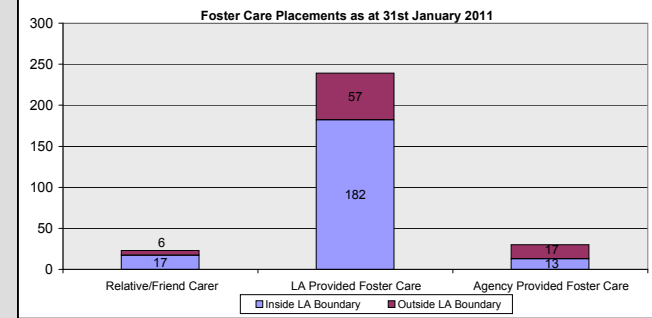
## **7.0 Performance Grid**

- 7.1 See attached - separated by Placements, Placement Stability, Reviews, Care Leavers, Missing Children, Adoptions, Offending, Emotional and Behavioural Health, and Ethnicity.

CHILDREN LOOKED AFTER

CHILDREN LOOKED AFTER

| Ref                 | Definition                         | Measure  | Apr-10          | May-10          | Jun-10          | Aug-10  | Sep-10  | Oct-10  | Nov-10  | Dec-10  | Jan-11  | Target 10/11 | Target Met? | Direction of Travel from previous month (%) | Monthly Narrative   |
|---------------------|------------------------------------|----------|-----------------|-----------------|-----------------|---------|---------|---------|---------|---------|---------|--------------|-------------|---|---|
| <b>CLA Overview</b> |                                    |          |                 |                 |                 |         |         |         |         |         |         |              |             |   |   |
| □                   | CLA per 10,000 under 18 population | Snapshot | Data            | Data            | Data            | 68.8    | 69.9    | 69.4    | 68.0    | 68.2    | 69.2    | □            | □           | □   | CLA numbers remained relatively stable from November to December, then experienced an increase of six during January to 394. It is important to note that these figures reflect a snapshot in time and are subject to change on a daily basis.  |
| □                   | Numbers of CLA....                 | Snapshot |                 |                 |                 | 396     | 398     | 395     | 387     | 388     | 394     |              |             |   |   |
| <b>Placements</b>   |                                    |          |                 |                 |                 |         |         |         |         |         |         |              |             |   |   |
| □                   | ...Placed with Parent              | Snapshot |                 |                 |                 | 13/396  | 13/398  | 11/395  | 13/387  | 15/388  | 16/394  | □            | □           | □   | 16 children were placed with parents as at the end of January, equating to 4.06% of all CLA. This is the third-consecutive increase and reflects the highest proportions placed with parents since May's outturn of 4.60%   |
|                     |                                    |          |                 |                 |                 | 3.28%   | 3.27%   | 2.79%   | 3.36%   | 3.87%   | 4.06%   |              |             |   |   |
| □                   | ...Placed in Residential Care      | Snapshot |                 |                 |                 | 46/396  | 46/398  | 46/395  | 45/387  | 44/388  | 45/394  | □            | □           | □   | The numbers of children placed in residential care has remained relatively stable throughout the financial year, changing by just one or two children each month. At the end of January 2011, 45 children were in residential care, equating to 11.42% of all CLA.  |
|                     |                                    |          |                 |                 |                 | 12%     | 11.56%  | 11.65%  | 11.63%  | 11.34%  | 11.42%  |              |             |   |   |
| □                   | ...Placed for Adoption             | Snapshot |                 |                 |                 | 33/396  | 31/398  | 36/395  | 32/387  | 30/388  | 33/394  | □            | □           | ↑ (neutral)                                 | Following a peak of 36 during October, the numbers of children placed for adoption have been reducing, but with a slight increase in the last month to 33. This equates to a current performance of 8.38%. Of the 33 children currently placed for adoption, 17 are aged-5 and over, and it is this age group are that traditionally harder to place within 12-months - thereby directly impacting on the future performance of NI61 (see below).   |
|                     |                                    |          |                 |                 |                 | 8.33%   | 7.79%   | 9.11%   | 8.27%   | 7.73%   | 8.38%   |              |             |   |   |
| □                   | ...Placed in Foster Care           | Snapshot | Data suppressed | Data suppressed | Data suppressed | 297/396 | 302/398 | 296/395 | 291/387 | 291/388 | 292/394 | □            | □           | □   | As at the end of January 2011, 292 of 394 children were placed in foster care, which represents 74.11% of the total CLA population. Averaging at three-quarters of all CLA, this outturn does not deviate significantly from any of the preceding months. The table below shows those placed in and out of the area, according to placement provider.<br><br>72.60% (212 of 292) of foster care placements are within the LA boundary - a level typical of previous months. 76.15% of LA provided foster care in is the boundary and 44.33% of agency provided foster care is in the boundary (from levels of 25% in the summer). In the last month therefore, a slightly lower proportion of externally provided placements have been in the boundary but this appears to be due to two children leaving the cohort. |
|                     |                                    |          |                 |                 |                 | 75.00%  | 75.88%  | 74.94%  | 75.19%  | 75.00%  | 74.11%  |              |             |   |   |
| □                   | ...Female                          | Snapshot |                 |                 |                 | 163/396 | 163/398 | 163/395 | 159/387 | 157/388 | 160/394 | □            | □           | □   | Females continue to account for less than half of all CLA, at 40.61% (160 of 394).  |
|                     |                                    |          |                 |                 |                 | 41.16%  | 40.95%  | 41.27%  | 41.09%  | 40.46%  | 40.61%  |              |             |   |   |
| □                   | ...Male                            | Snapshot |                 |                 |                 | 233/396 | 235/398 | 232/395 | 228/387 | 231/388 | 234/394 | □            | □           | □   | Males continue to account for more than half of all CLA, at 59.53% (234 of 394).  |
|                     |                                    |          |                 |                 |                 | 58.84%  | 59.05%  | 58.73%  | 58.91%  | 59.54%  | 59.39%  |              |             |   |   |



**CHILDREN LOOKED AFTER**

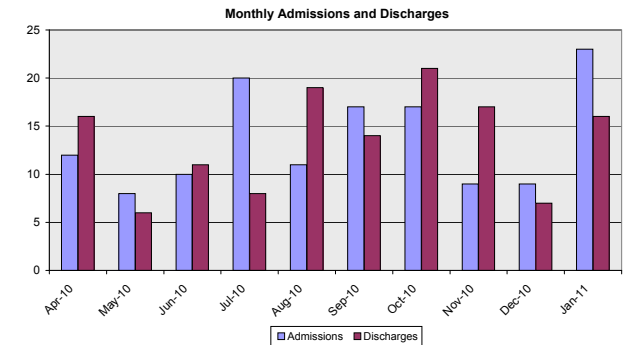
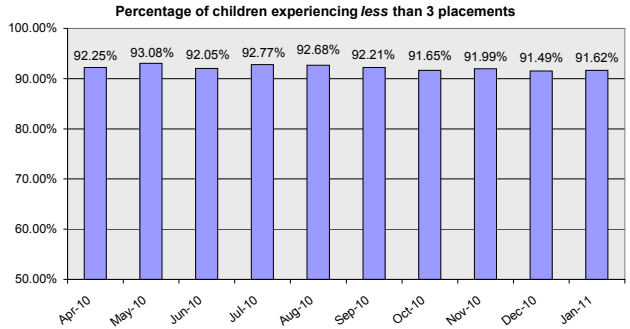
**CHILDREN LOOKED AFTER**

| Ref | Definition  | Measure  | Apr-10          | May-10          | Jun-10          | Jul-10          | Aug-10  | Sep-10  | Oct-10  | Nov-10  | Dec-10  | Jan-11  | Target 10/11 | Target Met? | Direction of Travel from previous month (%) | Monthly Narrative   |
|-----|---|----------|-----------------|-----------------|-----------------|-----------------|---------|---------|---------|---------|---------|---------|--------------|-------------|---|---|
|     |   |          | Data suppressed | Data suppressed | Data suppressed | Data suppressed |         |         |         |         |         |         |              |             |   |   |
| □   | Family Placements: Under 10's                                     | Snapshot |                 |                 |                 |                 | 170/170 | 173/173 | 173/174 | 169/170 | 169/170 | 178/179 | 100%         | ✘ (neutral) | ➔ (neutral)                                 | One child under-10 continues to be placed in a residential setting, meaning performance remains under 100% at 99.44% for those under-10 in family placements. The child this relates to is aged-8 and continues to be in a residential placement outside the boundary due to their exceptionally complex needs.   |
|     |   |          |                 |                 |                 |                 | 100%    | 100%    | 99.43%  | 99.41%  | 99.41%  | 99.44%  |              |             |   |   |
| □   | Family Placements: Under 12 (excluding those placed with parents) | Snapshot |                 |                 |                 |                 | 196/198 | 200/202 | 201/204 | 193/196 | 190/193 | 197/199 | 100%         | ✘ (neutral) | ⬆ (neutral)                                 | Currently, two children under-12 are placed residentially (a reduction of one in the last month and including the 8-year-old noted above), equating to a 98.99% performance at the end of January 2011. Sunderland's children's homes are registered to accommodate only children aged-12 and over, and it is exceptional for children under-12 to be placed in external residential placements.                        |
|     |   |          |                 |                 |                 |                 | 98.99%  | 99.01%  | 98.53%  | 98.47%  | 98.45%  | 98.99%  |              |             |   |   |
| □   | Family Placements: 10-15 inclusive                                | Snapshot |                 |                 |                 |                 | 123/145 | 123/146 | 120/146 | 118/143 | 120/145 | 118/141 | 84%          | ✘ (neutral) | ⬆ (neutral)                                 | As children get older, there is a higher possibility that they will be cared for in a residential setting. This is reflected in the 10-15 age group where 23 children are placed residentially, taking the family placement performance to 83.69%. The current performance therefore is an improvement on the previous month, despite remaining marginally under target.  |
|     |   |          |                 |                 |                 |                 | 84.83%  | 84.25%  | 82.19%  | 82.52%  | 82.76%  | 83.69%  |              |             |   |   |
| □   | School age CLA with a PEP (age 4-16)                              | Snapshot |                 |                 |                 |                 | □       | □       | □       | □       | □       | □       | 100%         | □           | □   | The proportion of children looked after with PEP's cannot be validated at this time due to lack of recording on ICS - following some delays it is now anticipated that the Sunderland Virtual Schools Team will make the data available by March. Recent provisional data receives suggests that performance may not be at 98% as previously through - the Performance Grid has therefore been amended to reflect this. |

CHILDREN LOOKED AFTER

CHILDREN LOOKED AFTER

| Ref                        | Definition  | Measure  | Apr-10          | May-10          | Jun-10          | Jul-10          | Aug-10 | Sep-10 | Oct-10 | Nov-10 | Dec-10 | Jan-11 | Target 10/11 | Target Met? | Direction of Travel from previous month (%) | Monthly Narrative   |
|----------------------------|---|----------|-----------------|-----------------|-----------------|-----------------|--------|--------|--------|--------|--------|--------|--------------|-------------|---|---|
| <b>Placement Stability</b> |   |          |                 |                 |                 |                 |        |        |        |        |        |        |              |             |   |   |
| NI62                       | Stability of placements of looked after children: number of placements 3+ | Snapshot | Data suppressed | Data suppressed | Data suppressed | Data suppressed | 29/396 | 31/398 | 33/395 | 31/387 | 33/388 | 33/394 | <10%         | ✓ (green)   | ↓ (green)                                   | <p>The actual number of children that have experienced three or more placement moves has remained stable at 33 over the last two-months - the percentage however is better at the end of January due to the increase in total CLA number. At the end of January therefore 8.38% of CLA had experienced three or more placement moves. Despite remaining within target, current performance continues to reflect the high demand for placements and under-capacity within the system (the Foster Carer Recruitment Strategy is being developed to counteract the impact on this indicator). The tables below shows the trend in placement stability, and uncovers the activity across admissions and discharges that is currently masked in the figures.</p> |
|                            |   |          | 7.32%           | 7.79%           | 8.35%           | 8.01%           | 8.51%  | 8.38%  |        |        |        |        |              |             |   |   |

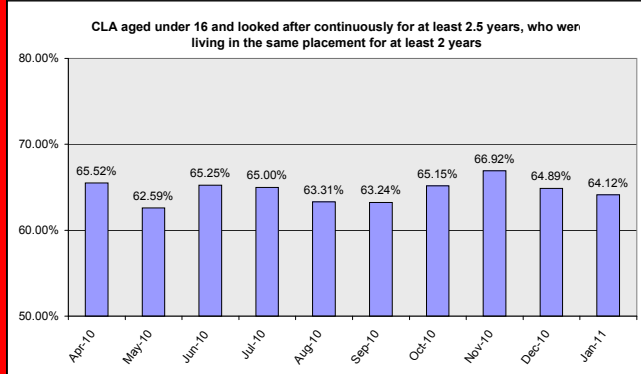




CHILDREN LOOKED AFTER

CHILDREN LOOKED AFTER

| Ref  | Definition  | Measure    | Apr-10          | May-10          | Jun-10          | Aug-10 | Sep-10 | Oct-10 | Nov-10 | Dec-10 | Jan-11  | Target 10/11 | Target Met?  | Direction of Travel from previous month (%) | Monthly Narrative   |
|------|---|------------|-----------------|-----------------|-----------------|--------|--------|--------|--------|--------|---------|--------------|--|---|---|
| NI63 | The percentage of looked after children aged <b>under</b> 16, who had been looked after continuously for at least 2.5 years, who were living in the same placement for at least 2 years | Snapshot   | Data suppressed | Data suppressed | Data suppressed | 88/139 | 86/136 | 86/132 | 87/130 | 85/131 | 84/131  | 75%          | ✘ (red)  | ↓ (red)                                     | <p>For those children aged under-16 in long-term placements, 64.12% (84) continue to retain a stable long-term placement, which is the second-consecutive deterioration in monthly performance. The measure therefore remains under the 75% target. This reflects the high demand for placements and under-capacity within the system - the Foster Carer Recruitment Strategy is being developed to counteract the impact on this indicator. In Sunderland, a decision to move a child is taken on a case-by-case basis, and is made in line with the child's best interests (i.e. to bring siblings together) – such positive moves however do have a negative impact on this particular indicator, making it one of the most challenging indicators in the set.</p> <p>A suggestion has been raised to develop a local indicator which could provide a better understanding of placement quality, and which could lead to better explain performance changes across NI63 - it is recommended that this is investigated as part of the wider outcomes framework.</p> |
|      |   |            | 63.31%          | 63.24%          | 65.15%          | 66.92% | 64.89% | 64.12% |        |        |         |              |  |   |   |
| □    | The percentage of looked after children <b>16 and over</b> , who had been looked after continuously for at least 2.5 years, who were living in the same placement for at least 2 years  | Snapshot   | 25/57           | 28/56           | 30/62           | 31/60  | 28/58  | 24/55  | tbc    | tbc    | ↓ (red) | ↓ (red)      | <p>For those aged-16 and over, the percentage decreases to 43.64% (24/55) at the end of January 2011. This reflects the second-consecutive decrease in performance for this age group.</p> |   |   |
|      |   |            | 43.86%          | 50.00%          | 48.39%          | 51.67% | 48.28% | 43.64% |        |        |         |              |  |   |   |
| □    | School moves as a result of a placement   | Cumulative | 0               | 0               | 0               | 0      | 0      | 0      | 0      | 0      | 0       | □            | □  | → (green)                                   | <p>There have been no recent school moves as a result of a placement (this measure excludes those that moved as a result of an adoption placement)</p>  |



CHILDREN LOOKED AFTER

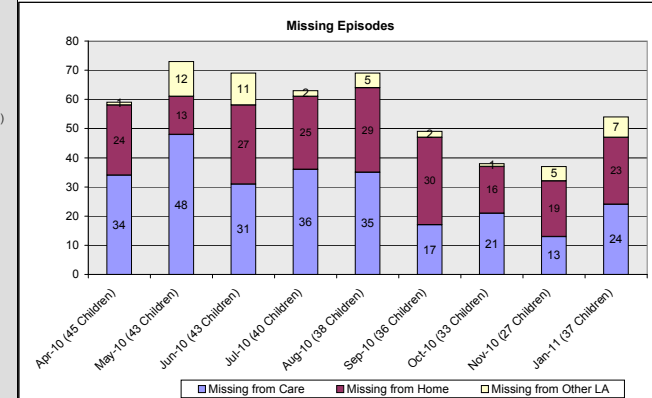
CHILDREN LOOKED AFTER

| Ref            | Definition   | Measure    | Apr-10          | May-10          | Jun-10          | Jul-10          | Aug-10  | Sep-10  | Oct-10  | Nov-10              | Dec-10  | Jan-11   | Target 10/11 | Target Met? | Direction of Travel from previous month (%) | Monthly Narrative   |
|----------------|--|------------|-----------------|-----------------|-----------------|-----------------|---------|---------|---------|---------------------|---------|--|--------------|-------------|---|---|
| <b>Reviews</b> |  |            |                 |                 |                 |                 |         |         |         |                     |         |  |              |             |   |   |
| PAF C63        | Participation of CLA in Reviews (excluding those aged under 4)   | Cumulative | Data suppressed | Data suppressed | Data suppressed | Data suppressed | 100%    | 100%    | 540/540 | 620/620             | 704/704 | 777/777  | 100%         | ✓ (green)   | ➔ (green)                                   | <p>CLA participation in reviews continues at 100%. The chart below shows a further breakdown, demonstrating that 54.83% (426) physically attended their review in the period (figures include participation at each review that takes place, regardless of how many reviews a child has in the period).</p> <p><b>CLA Participation in Reviews by Type (for those aged-4 and over)</b></p> <p>■ PN1 - Child physically attends and speaks for him or herself<br/>                     ■ PN2 - Child physically attends and an advocate speaks on his or her behalf<br/>                     □ PN3 - Child attends and conveys his or her view symbolically (non-verbally)<br/>                     □ PN4 - Child physically attends but does not speak for him or herself, does not convey his or her view symbolically (non-verbally) and does not ask an advocate to speak for him or her.<br/>                     ■ PN5 - Child does not attend physically but briefs an advocate to speak for him or her<br/>                     □ PN6 - Child does not attend but conveys his or her feelings to the review by a facilitative medium</p> |
|                |  |            | 100%            | 100%            | 100%            | 100%            | 100%    | 100%    |         |                     |         |  |              |             |   |   |
| NI66           | The percentage of children looked after cases which should have been reviewed during the year ending 31 March 2011 that were reviewed on time during the year. | Cumulative | 285/354         | 334/355         | 325/345         | 341/349         | 341/349 | 335/344 | 100%    | n/a until year-end. | ↓ (red) | As the is a cumulative measure, performance has been improving monthly as more children enter the denominator. There was a slight deterioration however by the end of January taking performance from 97.71% to 97.38% (335 of 344).   |              |             |   |   |
|                |  |            | 80.51%          | 93.52%          | 94.20%          | 97.71%          | 97.71%  | 97.38%  |         |                     |         |  |              |             |   |   |
| o              | Percentage of Foster Carer Reviews that were completed within timescale  | Cumulative | 32/52           | 44/69           | 46/73           | 56/82           | 61/92   | 67/105  | 100%    | x (red)             | ↓ (red) | From April-10 to January-11, 63.81% (67 of 105) of Foster Carer Reviews took place within timescale (at least every 12-months). Of those that were outside of timescale, 20 had agreed extensions (most for less than 3-months) and 18 are awaiting completion/recording (more than half of the latter are less than three-months overdue, although one is nine-months overdue). |              |             |   |   |
|                |  |            | 61.54%          | 63.77%          | 63.01%          | 68.29%          | 66.30%  | 63.81%  |         |                     |         |  |              |             |   |   |

CHILDREN LOOKED AFTER

CHILDREN LOOKED AFTER

| Ref                 | Definition   | Measure  | Apr-10          | May-10          | Jun-10          | Jul-10          | Aug-10 | Sep-10 | Oct-10 | Nov-10 | Dec-10 | Jan-11 | Target 10/11 | Target Met? | Direction of Travel from previous month (%) | Monthly Narrative   |
|---------------------|--|----------|-----------------|-----------------|-----------------|-----------------|--------|--------|--------|--------|--------|--------|--------------|-------------|---|---|
| <b>Care Leavers</b> |  |          |                 |                 |                 |                 |        |        |        |        |        |        |              |             |   |   |
| NI147               | Former care leavers aged 19 in suitable accommodation              | Rolling  | Data suppressed | Data suppressed | Data suppressed | Data suppressed | 15/21  | 15/22  | 23/27  | 27/30  | 28/35  | 29/40  | 86%          | ✘ (red)     | ↓ (red)                                     | Performance for care leavers in suitable accommodation and EET are both under target and have both experienced a performance decrease on the previous month (72.50% and 47.50% respectively).<br><br>i. The situation remains that the individuals in this particular cohort have proven very difficult to engage, with several refusing contact. The small numbers within the cohort mean that an individuals failure to engage impacts greatly on the figures.<br>ii. Care leavers over-18 are entitled to be offered a statutory Leaving Care Service but it is not a statutory requirement that they maintain contact if they do not wish to do so.<br>iii. There is also an issue with young people not involved with the Leaving Care Service but whom are included in the cohort i.e. one young person is in a psychiatric hospital and is no longer an open case, another young person has not been referred. This obviously has an impact on the figures which it is not possible to address.<br>iv. Due to the 'window' closing, some positive outcomes of young people in NEET, are not reflected. |
|                     |  |          |                 |                 |                 |                 | 71.43% | 68.18% | 85.19% | 90.00% | 80.00% | 72.50% |              |             |   |   |
| NI148               | Care Leavers in Education, Employment or Training at the age of 19 | Rolling  | Data suppressed | Data suppressed | Data suppressed | Data suppressed | 11/21  | 11/22  | 13/27  | 15/30  | 17/35  | 19/40  | 67%          | ✘ (red)     | ↓ (red)                                     |   |
|                     |  |          |                 |                 |                 |                 | 52.38% | 50%    | 48.15% | 50.00% | 48.57% | 47.50% |              |             |   |   |
| <b>Missing CLA</b>  |  |          |                 |                 |                 |                 |        |        |        |        |        |        |              |             |   |   |
| NI71                | CLA missing from home/care   | Snapshot | Data suppressed | Data suppressed | Data suppressed | Data suppressed | 12     | 12     | 12     | 12     | 12     | 12     | 15           | ✘ (red)     | → (neutral)                                 | The self-assessment at the end of December 2010 remains at 12 from a possible 15. To raise the rating, further work is needed in the areas of (i) Local procedures to meet the needs of runaways, (ii) Protocols for responding to urgent/out of hours referrals, and (iii) Local procedures including effective needs assessment protocols. Work is ongoing to track those missing in order to offer them services - and the following chart shows missing activity as defined by Northumbria Police for January 2011. The chart shows an increase in missing activity in January - both in terms of episodes and children, with 81.48% of missing episodes for under 24hours.   |



CHILDREN LOOKED AFTER

CHILDREN LOOKED AFTER

| Ref                                     | Definition  | Measure    | Apr-10          | May-10          | Jun-10          | Aug-10 | Sep-10                          | Oct-10 | Nov-10 | Dec-10 | Jan-11                           | Target 10/11 | Target Met?         | Direction of Travel from previous month (%) | Monthly Narrative   |
|---|---|------------|-----------------|-----------------|-----------------|--------|---------------------------------|--------|--------|--------|----------------------------------|--------------|---------------------|---|---|
| <b>Adoptions</b>                        |   |            |                 |                 |                 |        |                                 |        |        |        |                                  |              |                     |   |   |
| NI61                                    | Percentage of children adopted who were placed for adoption within 12 months of best interest decision being made | Cumulative | Data suppressed | Data suppressed | Data suppressed | 4/7    | 10/16                           | 10/17  | 10/21  | 12/23  | 13/24                            | 82%          | ✗ (red)             | ↑ (green)                                   | <p>In the last month, one-additional child has been adopted in timescale, taking the percentage from 52.17% to 54.17%, and equating to 13 children adopted in timescale since April.</p> <p>- In the same period (since April), 11 children have been adopted outside of the 12-month best interest decision - and as previously explained, ten of those were aged-5 and over at the time of the adoption (seven were aged-7 and over) - and one was a boy with complex disabilities placed at the age of 2-years.</p> <p>-With more than half of all children currently placed for adoption aged-5 and over, a continued performance under target could be experienced. However, it is predicated that more children aged under-one will enter the cohort before the end of the financial year.</p>  |
|   |   |            | 57.14%          | 62.50%          | 58.82%          | 47.62% | 52.17%                          | 54.17% |        |        |                                  |              |                     |   |   |
| PAF C23                                 | Annual No. of Adoptions/Guardianship Orders as a percentage of CLA continuously for 6 months                      | Cumulative | Data suppressed | Data suppressed | Data suppressed | 12/333 | 16/336                          | 20/329 | 25/326 | 27/330 | 29/334                           | 9%           | n/a until year-end. | ↑ (green)                                   | <p>As this is a cumulative indicator, performance will and has been, increasing month-by-month, currently standing at 8.88%.</p>  |
|   |   |            | 3.60%           | 4.76%           | 6.08%           | 7.67%  | 8.18%                           | 8.68%  |        |        |                                  |              |                     |   |   |
| <b>Offending</b>                        |   |            |                 |                 |                 |        |                                 |        |        |        |                                  |              |                     |   |   |
| PAF C18                                 | Offending whilst looked after   | Cumulative | Data suppressed | Data suppressed | Data suppressed | n/a    | 6.50% (S'Land) / 5.66% (N'bria) | n/a    | n/a    | n/a    | 10.05% (S'Land) / 5.66% (N'bria) | <2.4         | ✓ (green)           | ↑ (red)                                     | <p>At the end of the period April to December there were 189 CLA for 12months+, of which 19 of them were offenders. This gives a cumulative offending rate of 10.05% for CLA, compared to 5.66% for the general 10-17 population in Northumbria. Thus, there were 1.78 CLA Offenders for every one 10-17-year-old offender at the end of the Quarter 3, compared to 1.21 and 1.15 in the two previous Quarters.</p> <p>- Figures are based on a potential cohort, which won't be finalised until March 2011.</p> <p>- This indicator is already worse than the outturn last year with one Quarter to come. 15 of the 19 were living in children's homes at the time of the offence though the majority of the offences took place outside the home and were not reported by staff.</p> <p>- A recent Freedom of Information Request revealed that between 2003 and 2011, 931 individual children became looked after (on one or more occasion) and 217 of those had been convicted of a crime. Of the 217 with a criminal record, 37% (81) gained their first conviction after they became looked after and, of these, 38.3% gained that conviction during the first 6 months of being in care.</p> |
|   |   |            | n/a             | 1.15            | n/a             | n/a    | n/a                             | 1.78   |        |        |                                  |              |                     |   |   |
| <b>Emotional and Behavioural Health</b> |   |            |                 |                 |                 |        |                                 |        |        |        |                                  |              |                     |   |   |
| NI58                                    | Emotional and Behavioural Health of CLA   | Rolling    | Data suppressed | Data suppressed | Data suppressed | n/a    | 13.3                            | n/a    | n/a    | 13.12  | n/a                              | <16          | ✓ (green)           | ↓ (neutral)                                 | <p>Performance at the end of Quarter 3 remained relatively stable at 13.12, indicating low mental health needs of CLA on average (72.25% had low mental health needs scoring 0-16, 12.04% had borderline mental health needs scoring 17-20 and 15.71% had higher than average mental health needs scoring 21+). Those scoring 17+ (borderline mental health needs) are offered a mental health appointment. The score is derived from an average of completed questionnaires, each containing 25 questions rated relating to Emotions, Conduct, Hyperactivity, Peer Problems and Pro-social Behaviour – the total of which gives a score of 0-40.</p>   |

**CHILDREN LOOKED AFTER**

**CHILDREN LOOKED AFTER**

| Ref   | Definition  | Measure  | Apr-10          | May-10          | Jun-10          | Jul-10          | Aug-10 | Sep-10 | Oct-10     | Nov-10     | Dec-10     | Jan-11     | Target 10/11 | Target Met? | Direction of Travel from previous month (%) | Monthly Narrative   |              |       |  |   |                                 |   |  |   |                                       |   |                     |   |                              |   |                            |   |             |   |               |     |
|---|---|----------|-----------------|-----------------|-----------------|-----------------|--------|--------|------------|------------|------------|------------|--------------|-------------|---|---|--------------|-------|--|---|---------------------------------|---|--|---|---------------------------------------|---|---------------------|---|------------------------------|---|----------------------------|---|-------------|---|---------------|-----|
| <b>Disabilities</b>   |   |          |                 |                 |                 |                 |        |        |            |            |            |            |              |             |   |   |              |       |  |   |                                 |   |  |   |                                       |   |                     |   |                              |   |                            |   |             |   |               |     |
| □   | □   | □        | Data suppressed | Data suppressed | Data suppressed | Data suppressed | □      | □      | □          | □          | □          | □          | tbc          | tbc         | tbc   | Replacement indicators are currently being sought and developed for children with disabilities.                                 |              |       |  |   |                                 |   |  |   |                                       |   |                     |   |                              |   |                            |   |             |   |               |     |
| <b>Ethnicity</b>  |   |          |                 |                 |                 |                 |        |        |            |            |            |            |              |             |   |   |              |       |  |   |                                 |   |  |   |                                       |   |                     |   |                              |   |                            |   |             |   |               |     |
| □   | Unaccompanied asylum seekers                          | Snapshot |                 |                 |                 |                 | □      | □      | 2<br>0.51% | 2<br>0.52% | 1<br>0.26% | 2<br>0.51% | □            | □           | ↑ (neutral)                                 | At the end of January 2011, there were two CLA who were unaccompanied asylum seekers - an increase of one child since December. |              |       |  |   |                                 |   |  |   |                                       |   |                     |   |                              |   |                            |   |             |   |               |     |
| □   | Ethnic origin other than White British or White Irish | Snapshot | Data suppressed | Data suppressed | Data suppressed | Data suppressed | 16/396 | 20/398 | 19/395     | 19/387     | 19/388     | 19/394     | □            | □           | ↓ (neutral)                                 | 19 of 394 (4.82%) of children looked after are from an ethnic minority. The split of ethnic origin is represented below:        |              |       |  |   |                                 |   |  |   |                                       |   |                     |   |                              |   |                            |   |             |   |               |     |
| <table border="1"> <caption>CLA Ethnicity as at 31st January 2011</caption> <thead> <tr> <th>Ethnic Group</th> <th>Count</th> </tr> </thead> <tbody> <tr> <td>Asian or Asian British (Any Other Asian)</td> <td>2</td> </tr> <tr> <td>Asian or Asian British (Indian)</td> <td>1</td> </tr> <tr> <td>Black or Black British (Any Other Black)</td> <td>1</td> </tr> <tr> <td>Mixed Any Other Mixed Background (..)</td> <td>4</td> </tr> <tr> <td>Mixed White &amp; Asian</td> <td>6</td> </tr> <tr> <td>Other Ethnic Group - Chinese</td> <td>4</td> </tr> <tr> <td>Other Ethnic Group - Other</td> <td>1</td> </tr> <tr> <td>White Irish</td> <td>1</td> </tr> <tr> <td>White British</td> <td>374</td> </tr> </tbody> </table> |   |          |                 |                 |                 |                 |        |        |            |            |            |            |              |             |   |   | Ethnic Group | Count | Asian or Asian British (Any Other Asian) | 2 | Asian or Asian British (Indian) | 1 | Black or Black British (Any Other Black) | 1 | Mixed Any Other Mixed Background (..) | 4 | Mixed White & Asian | 6 | Other Ethnic Group - Chinese | 4 | Other Ethnic Group - Other | 1 | White Irish | 1 | White British | 374 |
| Ethnic Group  | Count   |          |                 |                 |                 |                 |        |        |            |            |            |            |              |             |   |   |              |       |  |   |                                 |   |  |   |                                       |   |                     |   |                              |   |                            |   |             |   |               |     |
| Asian or Asian British (Any Other Asian)  | 2   |          |                 |                 |                 |                 |        |        |            |            |            |            |              |             |   |   |              |       |  |   |                                 |   |  |   |                                       |   |                     |   |                              |   |                            |   |             |   |               |     |
| Asian or Asian British (Indian)   | 1   |          |                 |                 |                 |                 |        |        |            |            |            |            |              |             |   |   |              |       |  |   |                                 |   |  |   |                                       |   |                     |   |                              |   |                            |   |             |   |               |     |
| Black or Black British (Any Other Black)  | 1   |          |                 |                 |                 |                 |        |        |            |            |            |            |              |             |   |   |              |       |  |   |                                 |   |  |   |                                       |   |                     |   |                              |   |                            |   |             |   |               |     |
| Mixed Any Other Mixed Background (..)   | 4   |          |                 |                 |                 |                 |        |        |            |            |            |            |              |             |   |   |              |       |  |   |                                 |   |  |   |                                       |   |                     |   |                              |   |                            |   |             |   |               |     |
| Mixed White & Asian   | 6   |          |                 |                 |                 |                 |        |        |            |            |            |            |              |             |   |   |              |       |  |   |                                 |   |  |   |                                       |   |                     |   |                              |   |                            |   |             |   |               |     |
| Other Ethnic Group - Chinese  | 4   |          |                 |                 |                 |                 |        |        |            |            |            |            |              |             |   |   |              |       |  |   |                                 |   |  |   |                                       |   |                     |   |                              |   |                            |   |             |   |               |     |
| Other Ethnic Group - Other  | 1   |          |                 |                 |                 |                 |        |        |            |            |            |            |              |             |   |   |              |       |  |   |                                 |   |  |   |                                       |   |                     |   |                              |   |                            |   |             |   |               |     |
| White Irish   | 1   |          |                 |                 |                 |                 |        |        |            |            |            |            |              |             |   |   |              |       |  |   |                                 |   |  |   |                                       |   |                     |   |                              |   |                            |   |             |   |               |     |
| White British   | 374   |          |                 |                 |                 |                 |        |        |            |            |            |            |              |             |   |   |              |       |  |   |                                 |   |  |   |                                       |   |                     |   |                              |   |                            |   |             |   |               |     |