



Shining a light on the future

Northumberland, Tyne and Wear



NHS Foundation Trust

Sunderland

Children & Young People's (CYPS)

Community Services





About CYPS

- Part of NTW's Specialist Care Group
- Inpatient & Regional Services commissioned by NHS England
- Community Services commissioned by and aligned to CCGs
- All services are integrated providing support, assessment and treatment for young people with mental health problems including young people with a learning disability
- 0 – 18yrs



CAMHS - National Context

- Increasing T2 & T3 referrals
- Increasing level of acuity in referrals
- Increasing T2 & T3 case loads
- Increased waiting times across system
- High DNA Rates
- Increasing pressure on T4 Beds

**House of Commons
Health Committee**
Report & Recommendations



Children's and Adolescents' Mental Health and CAMHS

HC 342 Published on 5 November 2014 by authority of the
House of Commons London: The Stationery Office Limited



CAMHS - National Context

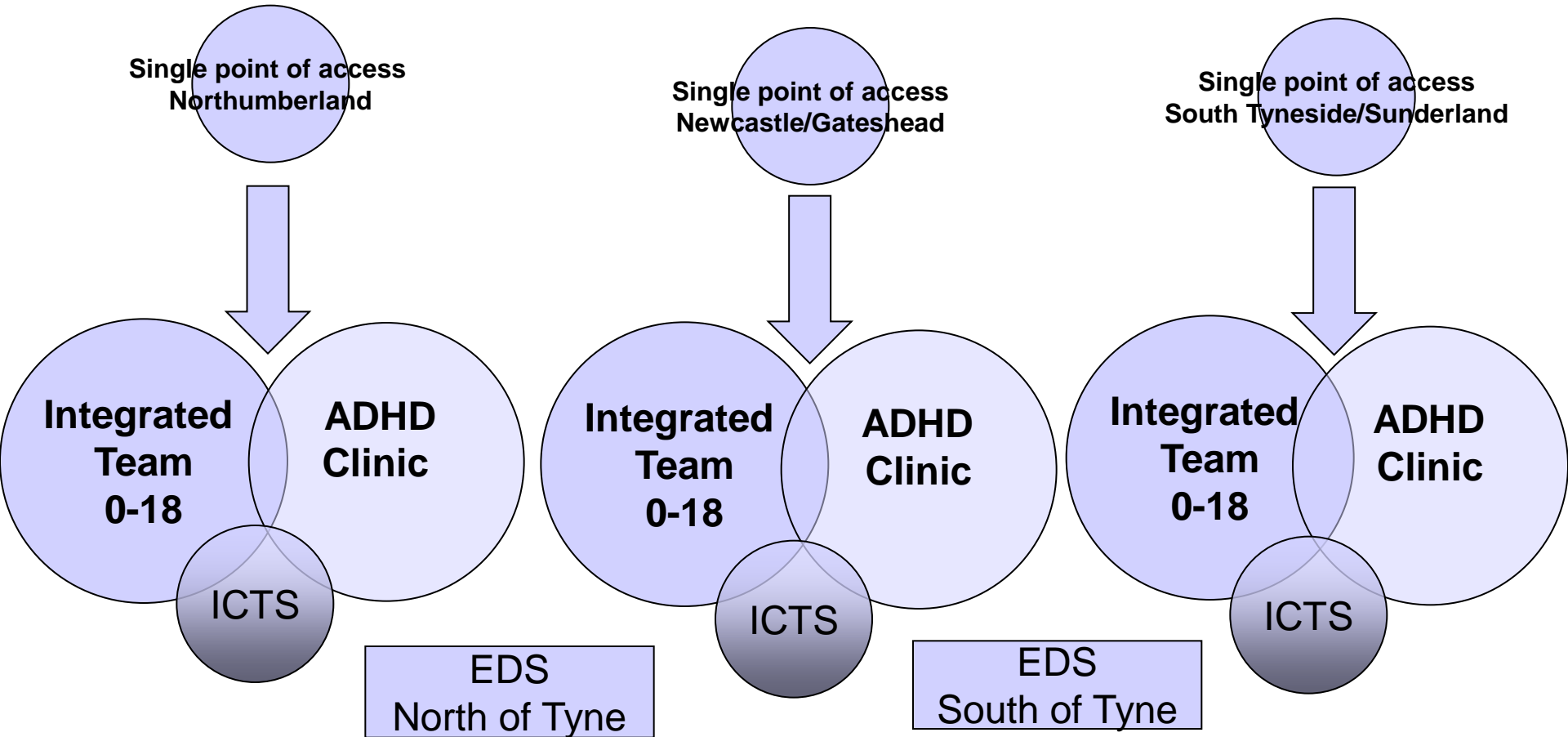
Future in mind

Promoting, protecting and improving our children and young people's mental health and wellbeing





Community CYPS Service Configuration





Community Service Functions

Integrated Team

Constitutes main element of the service and is made up of a multi disciplinary team of specialist mental health and learning disability staff who provide advice, support, assessment and treatment services. Care pathways have recently been re-developed in line with NICE Guidance

Attention Deficit Hyperactivity Disorder (ADHD) Clinic

The ADHD clinic system is designed to meet the needs of young people with a diagnosis of ADHD who are engaged in active treatment and require ongoing monitoring of their condition including medication titration, medication monitoring, physical health checks and interventions that will improve the young person's functioning based upon NICE Guidance.

(Team covers Sunderland & South Tyneside)



Community Service Functions

Intensive Care & Treatment Service (ICTS)

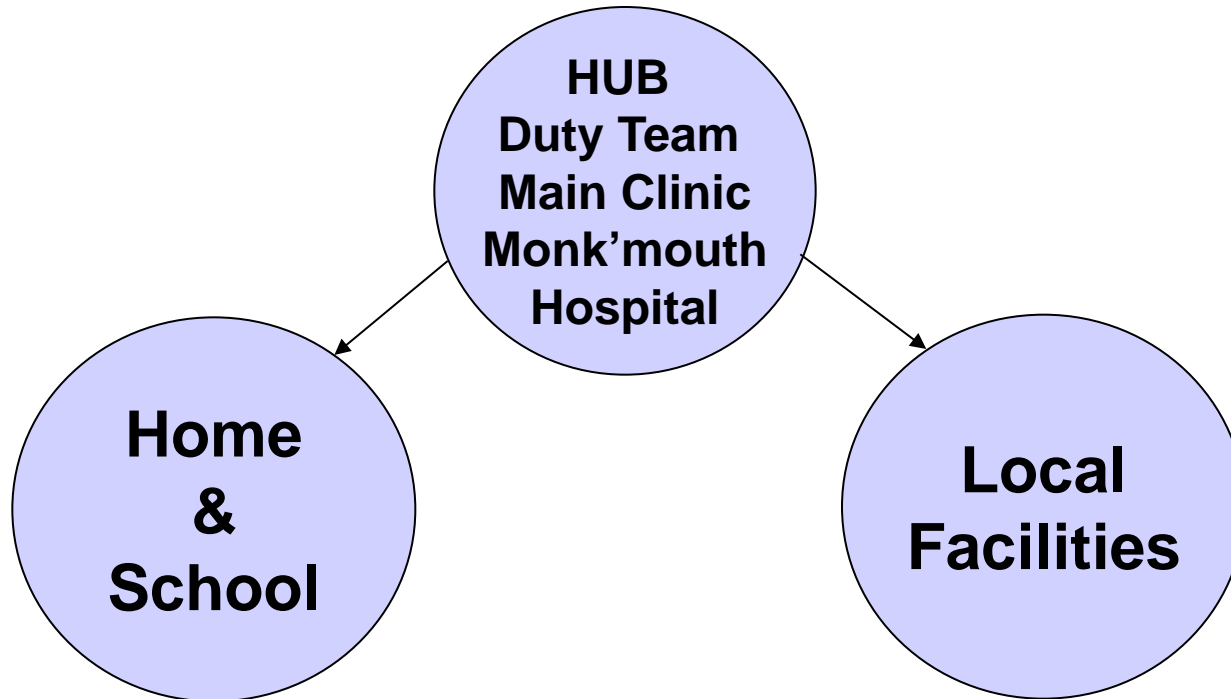
The team provide additional input for children and young people with significant and complex mental health need that require more intensive treatment programmes over a short period of time i.e where there is a mental health crisis. This service is delivered in collaboration with the Integrated Team and often prevents the need for a young person to be admitted to hospital. *(Team covers Sunderland & South Tyneside)*

Eating Disorder Intensive Community Treatment (EDT)

This service provides intensive community-based assessment, intervention and management services for young people with eating disorders. Services are delivered in partnership with the CYPS integrated team and other multi-agency partners to reduce the need for hospital admissions to regional eating disorder beds by providing high quality outcome focused care closer to home. *(Team covers Sunderland, South Tyneside and Gateshead)*



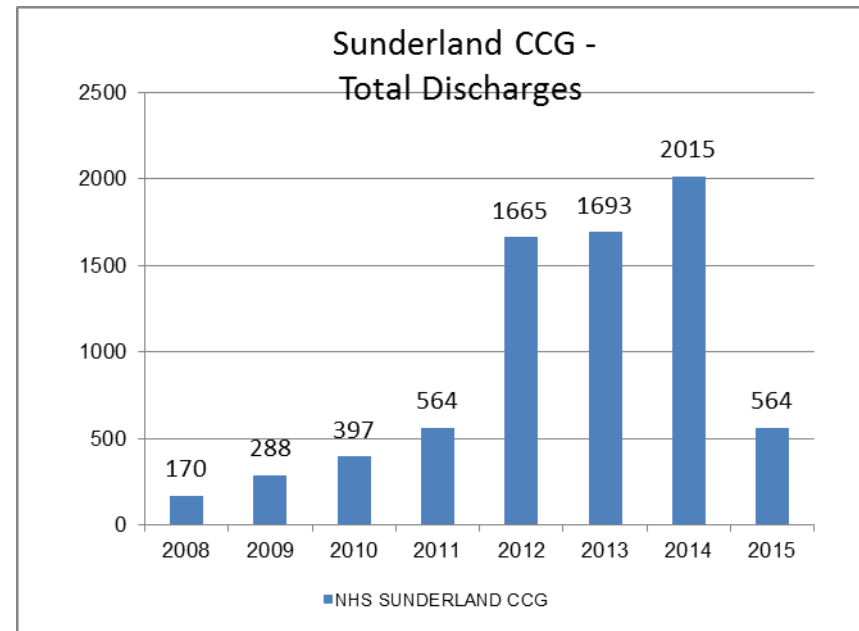
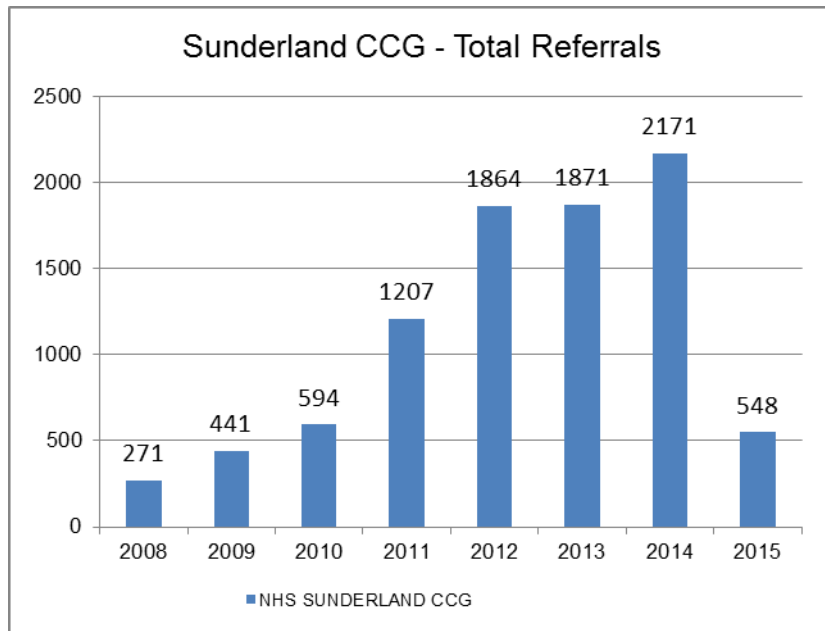
Sunderland CYPS HUB & Clinic



- Monkwearmouth Hospital is the administrative HUB and main clinic serving the area
- Lots of appointments take place in schools and young people's homes
- Currently looking to secure additional local clinic facilities



Sunderland CYPS Activity



Sunderland's rate of referral increased significantly between 2011 - 2014
Referrals in 2015 are set to increase further with discharge rates
remaining steady over 2012 & 2013 and increasing over 2014
Newcastle 2014 = 1,508



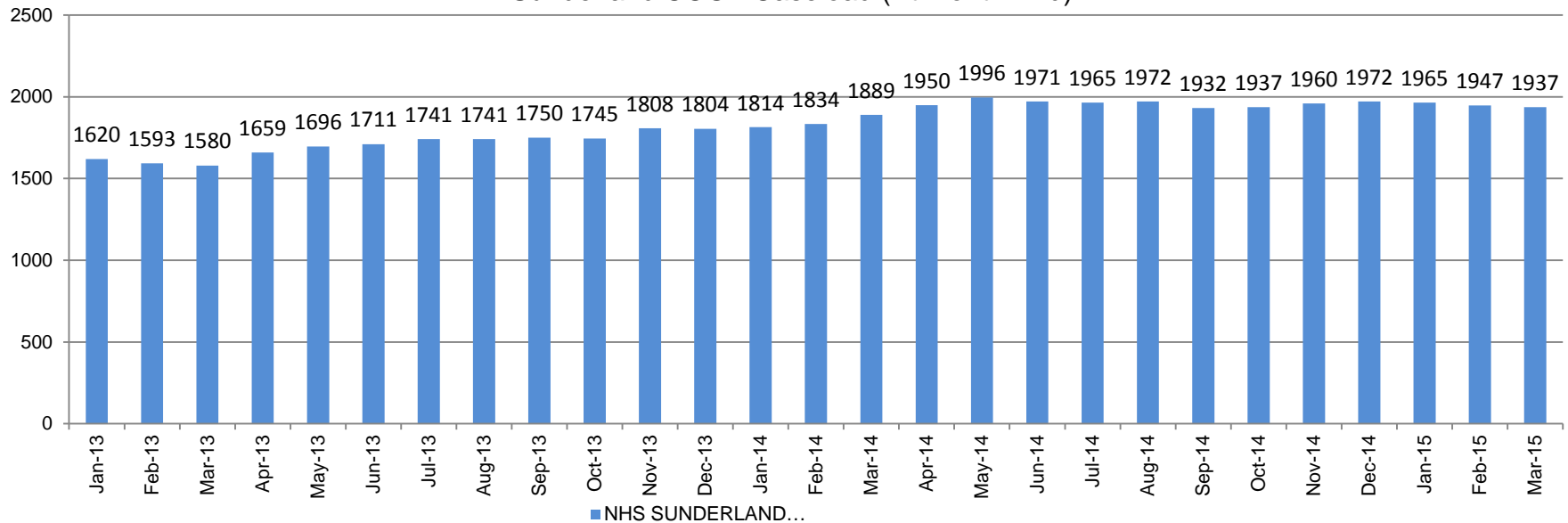
Sunderland CYPS Activity

Worksheet 6 (KPI 2.1) - CYPS Services Users - Received Referral Source:	Northumberland	Newcastle North & East	Newcastle West	Gateshead	South Tyneside	Sunderland
Adult Mental Health Services	1%			0%		0%
Child Health	1%		0%			
Children and Family Services (SM F)	2%			1%		
Children's Mental Health Services (SM F)	2%					
Children's Mental Health Services	3%					
Crisis Team	0%	0%	1%	1%	0%	1%
Education	6%	11%	9%	5%	4%	1%
Family Member	1%	0%	1%	3%	7%	5%
GP	42%	57%	43%	46%	49%	42%
Health Visitor	1%				1%	1%
Hospital (SM F)	0%	2%	1%	1%	2%	0%
Other	8%	27%	30%	22%	10%	25%
Paediatrician	8%	2%	9%	13%	8%	13%
Parent / Carer	0%			0%	1%	1%
Primary Health Care	4%					
School Health Advisor	10%		0%			
School Nurse (SM F)	3%			1%	4%	3%
Self Referral	1%	2%	3%	0%	0%	
Social Services	8%	0%	3%	3%	12%	7%
Targeted Youth Support (SM F)	1%					
Youth Offending Team	0%	0%		3%	4%	1%



Sunderland CYPS Activity

Sunderland CCG - Caseload (At Month End)



Sunderland's caseload has steadily increased since January 2013
With the overall caseload in 2014 levelling out between 1,937 – 1,996



Sunderland CYPS Activity

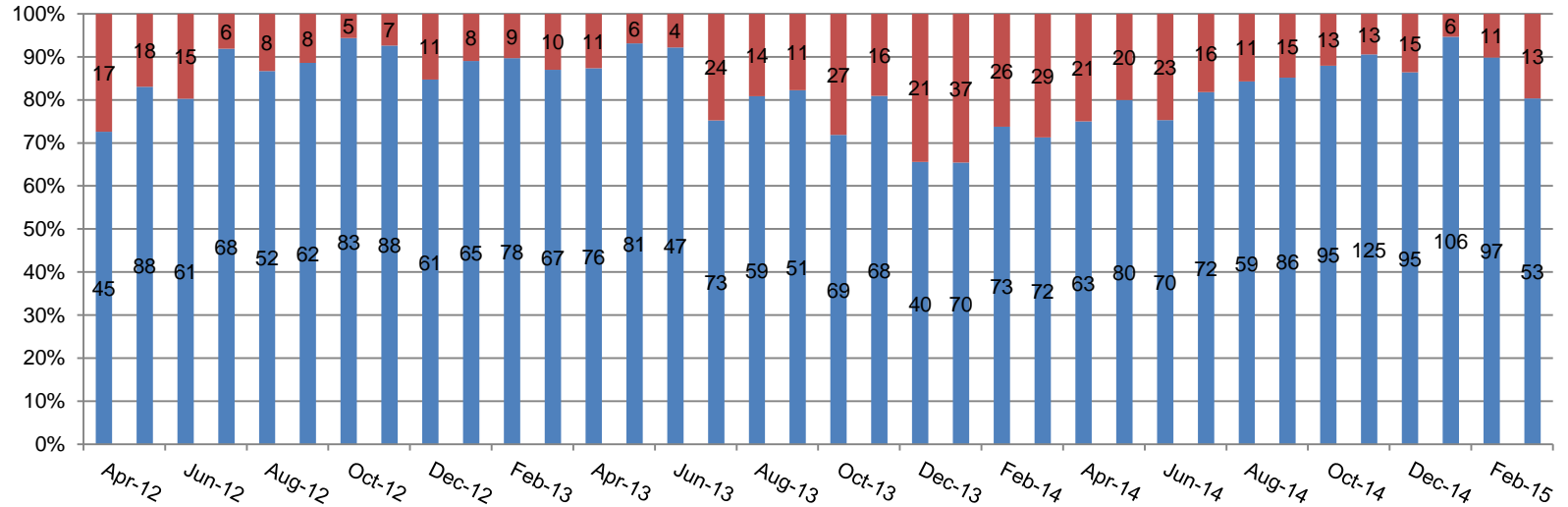
Worksheet 8 (KPI 2.3) - CYPS Services Users - Age Group as at 30.06.14	South Tyneside	Sunderland	Gateshead	Newcastle West	Newcastle North & East	Northumberland
CYPS (AMS) Service Users Aged 5 and Under	8.1%	6.7%	6.7%	4.9%	5.4%	5.7%
CYPS (AMS) Service Users Aged 6-13yrs	56.2%	53.4%	58.9%	55.8%	54.1%	55.4%
CYPS (AMS) Service Users Aged 14-16yrs	28.0%	29.6%	26.8%	28.3%	29.2%	28.4%
CYPS (AMS) Service Users Aged 17-18yrs	7.3%	10.1%	7.4%	10.4%	10.8%	9.9%
CYPS (AMS) Service Users Aged 19 and Over	0.4%	0.3%	0.2%	0.6%	0.5%	0.7%
Total	100.0%	100.0%	100.0%	100.0%	100.0%	100.0%

Worksheet 9 (KPI 2.4) - CYPS Services Users - Gender as at 30.06.14	South Tyneside	Sunderland	Gateshead	Newcastle West	Newcastle North & East	Northumb'l'd
F	35.3%	40.1%	33.3%	34.0%	35.2%	33.7%
M	64.7%	59.9%	66.7%	66.0%	64.8%	66.3%
Total	100.0%	100.0%	100.0%	100.0%	100.0%	100.0%

The modal age of service users has changed slightly in this quarter, with a decreasing trend in the 14-16 category and increases in the 6-13 category this will be monitored over the coming months.



Sunderland CYPS Referral Acuity



	Apr-May-12	Jun-12	Jul-12	Aug-12	Sep-12	Oct-Nov-12	Dec-12	Jan-13	Feb-13	Mar-13	Apr-May-13	Jun-13	Jul-13	Aug-13	Sep-13	Oct-Nov-13	Dec-13	Jan-14	Feb-14	Mar-14	Apr-May-14	Jun-14	Jul-14	Aug-14	Sep-14	Oct-Nov-14	Dec-14	Jan-15	Feb-15	Mar-15						
Urgent or Emergency	17	18	15	6	8	5	7	11	8	9	10	11	6	4	24	14	11	27	16	21	37	26	29	21	20	23	16	11	15	13	13	15	6	11	13	
Standard	45	88	61	68	52	62	83	88	61	65	78	67	76	81	47	73	59	51	69	68	40	70	73	72	63	80	70	72	59	86	95	125	95	106	97	53

■ Standard ■ Urgent or Emergency

SUNDERLAND CCG

Average 10 – 20 % of referrals are classed as Urgent or Emergency
 Average was 20 – 30% between June 13 - June 14 which was a considerable peak and is higher than anywhere else in the trust



Sunderland CYPS DNA Rates

CCG	% DNA first appointments 1/4/14-30/6/14
Northumberland CCG	19.2%
Newcastle West CCG	28.9%
Newcastle North & East CCG	29.1%
Gateshead CCG	17.5%
South Tyneside CCG	17.3%
Sunderland CCG	13.8%

CCG	% DNA appointments 1/4/14-30/6/14
Northumberland CCG	14.2%
Newcastle West CCG	21.0%
Newcastle North & East CCG	17.7%
Gateshead CCG	14.9%
South Tyneside CCG	14.5%
Sunderland CCG	17.1%



Sunderland CYPS HoNoSCA Outcomes

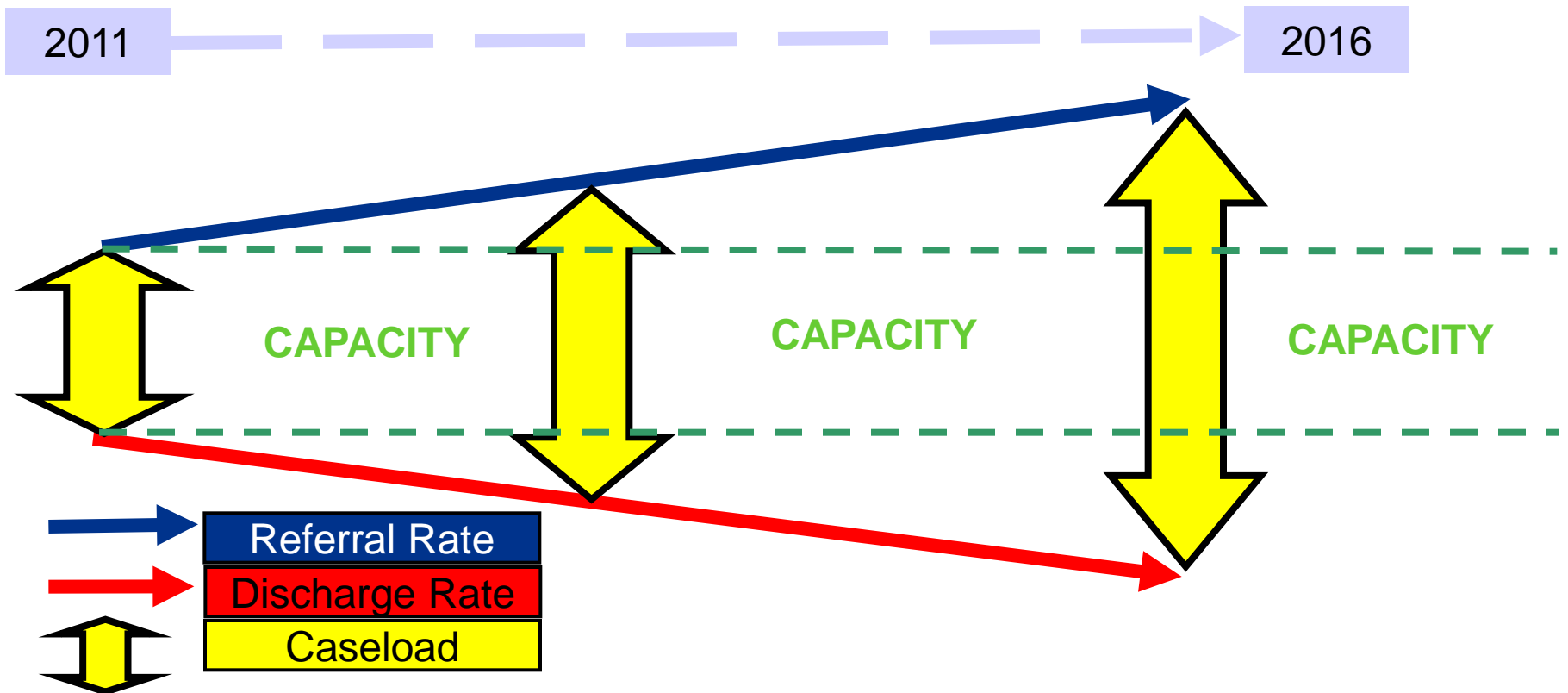
CCG	Discharges in the period (patients with at least 2 attended appointments)	Effect size for discharges 1/4/14-30/6/14 where HONOSCA recorded
Overall NTW	948	0.74 medium
Northumberland CCG	296	0.89 large
Newcastle West CCG	99	0.55 medium
Newcastle North & East CCG	78	0.67 medium
Gateshead CCG	106	1.06 large
South Tyneside CCG	140	0.96 large
Sunderland CCG	174	0.64 medium

The effect size reports are based solely on those discharges in the period with HoNoSCA scores recorded on entry to the service and on discharge.



CYPS Capacity Forecast 2011 - 2016

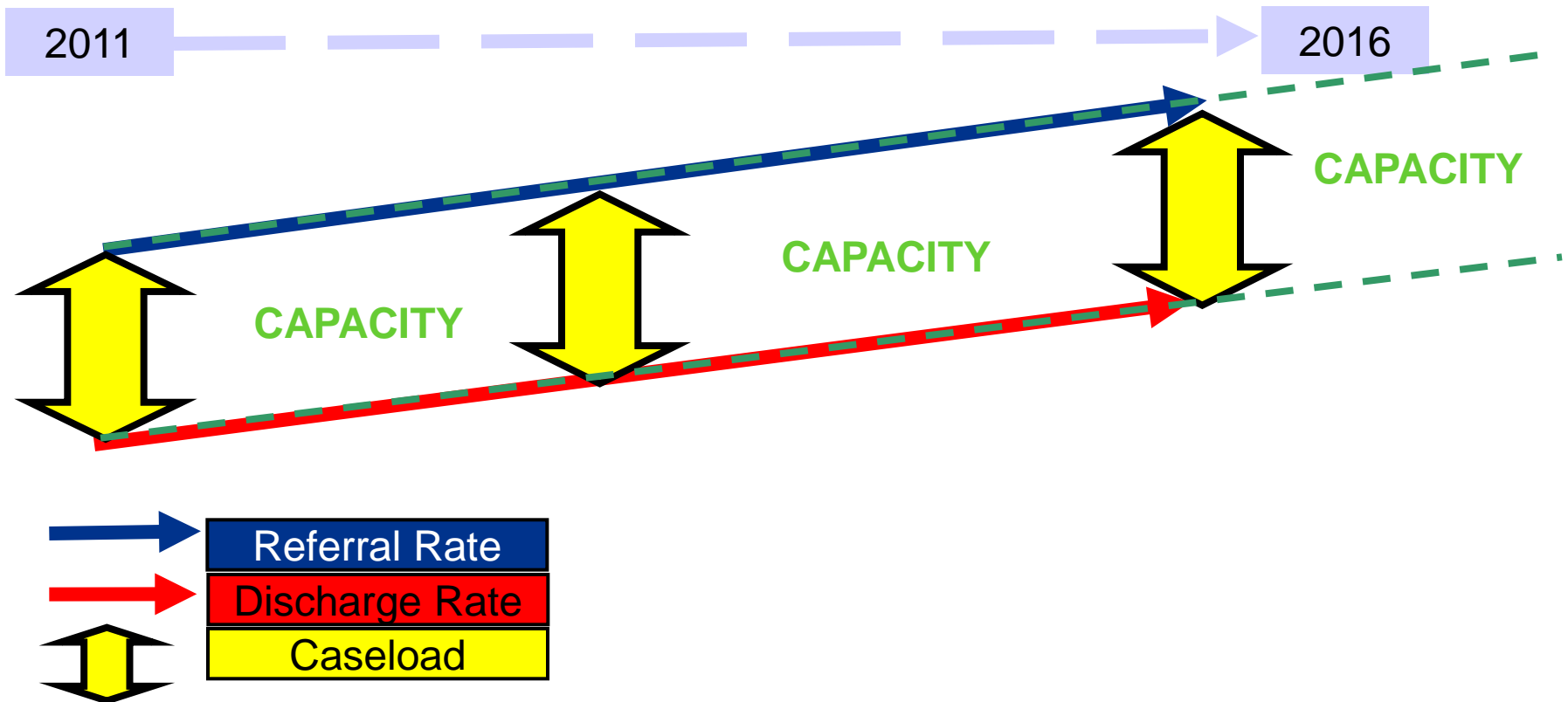
- Increase in referral rate
- Decrease in discharge rate
- Increased caseload of up to 100% over 3 / 4 years





CYPS Preferred Forecast 2011 - 2016

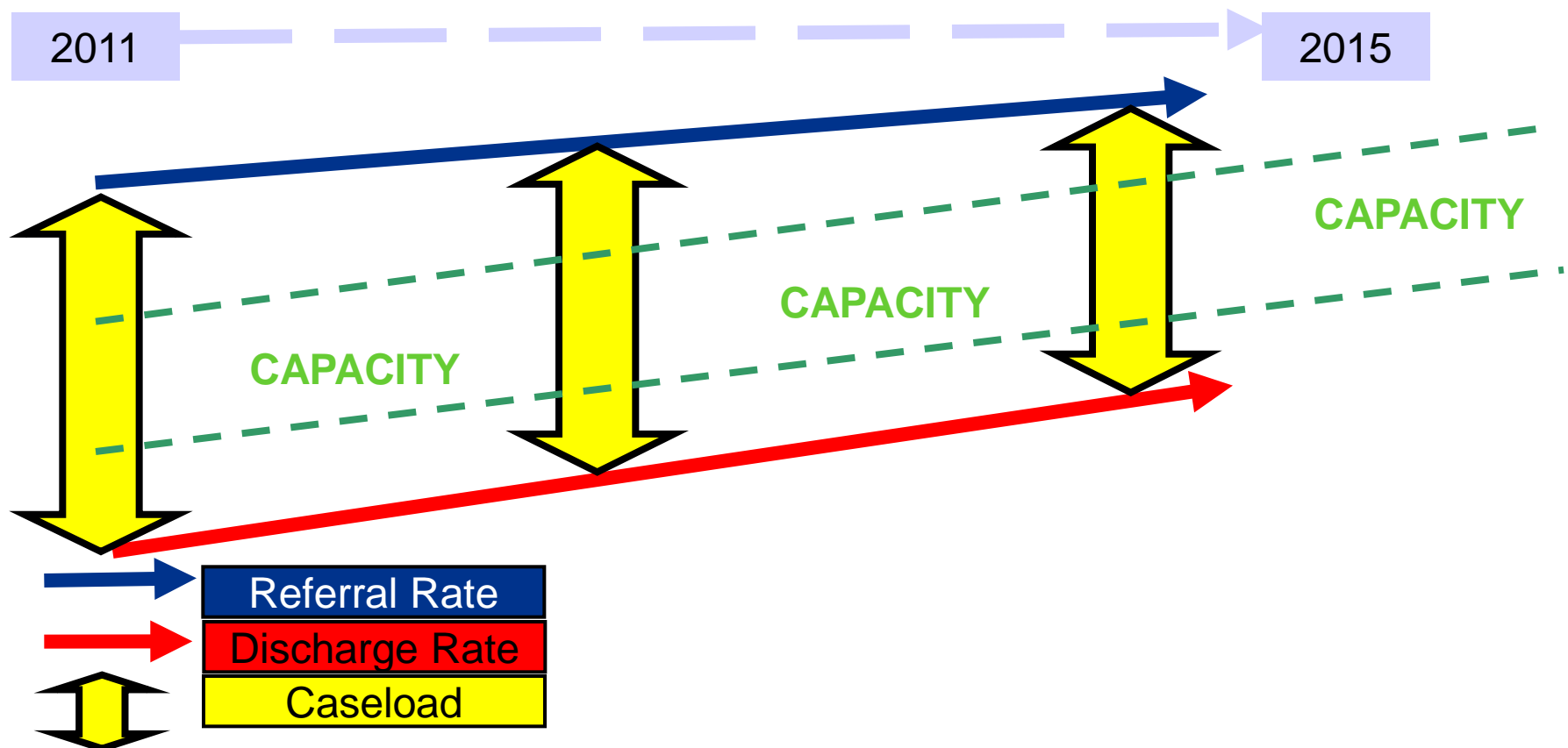
- Continue to manage referral rate
- Increase in discharge rate by 50% per year
- Time limited treatment pathways (shorter treatment programmes)
- Maintain capacity = demand throughout years





CYPS Current Position 2015

- Consistently high referral rate
- Increasing discharge rate which matches referral rates
- Still have very high caseload figures which currently outstrip capacity





Current Improvement Plans

As from 1st October 2014 **70%** of accepted referrals were assessed and in treatment within 12 weeks of the date of referral with up to **20%** being seen urgently within 7 days

New treatment pathways have been developed in line with NICE guidance implemented as from 1st October 2014

Most episodes of treatment will be delivered within 6 to 12 sessions therefore reducing the length of stay in the service and significantly increasing throughput whilst reducing dependence upon specialist services

Continue to work with commissioners and partners on the improvement and development of the wider emotional health and wellbeing pathway for young people in Sunderland via the relevant strategic groups



Thoughts and Questions!

