



North East England
Chamber of Commerce

Together we
grow
stronger

Sunderland City Council Economic Prosperity Scrutiny Committee

09/11/21

The headlines

Continued improvement in business performance, albeit at a slower rate

Export sales flatlining

Overall business concerns increasing

Significant worries over inflation, staff shortages and supply chain issues

The state of the regional economy

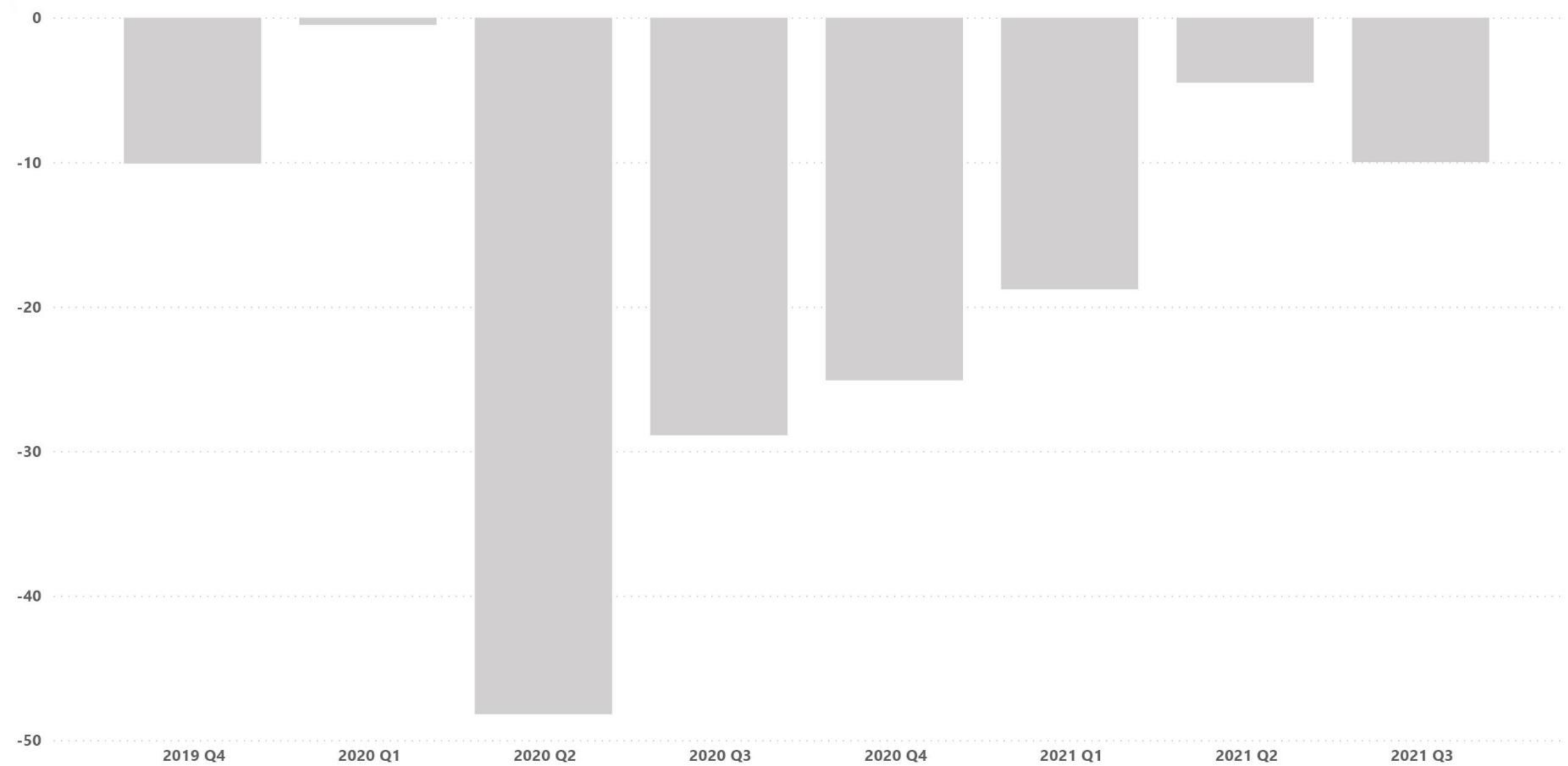
Methodology

Most of the questions in the survey ask whether companies have experienced an increase, decrease or no change in respect of a given performance indicator, such as UK Sales.

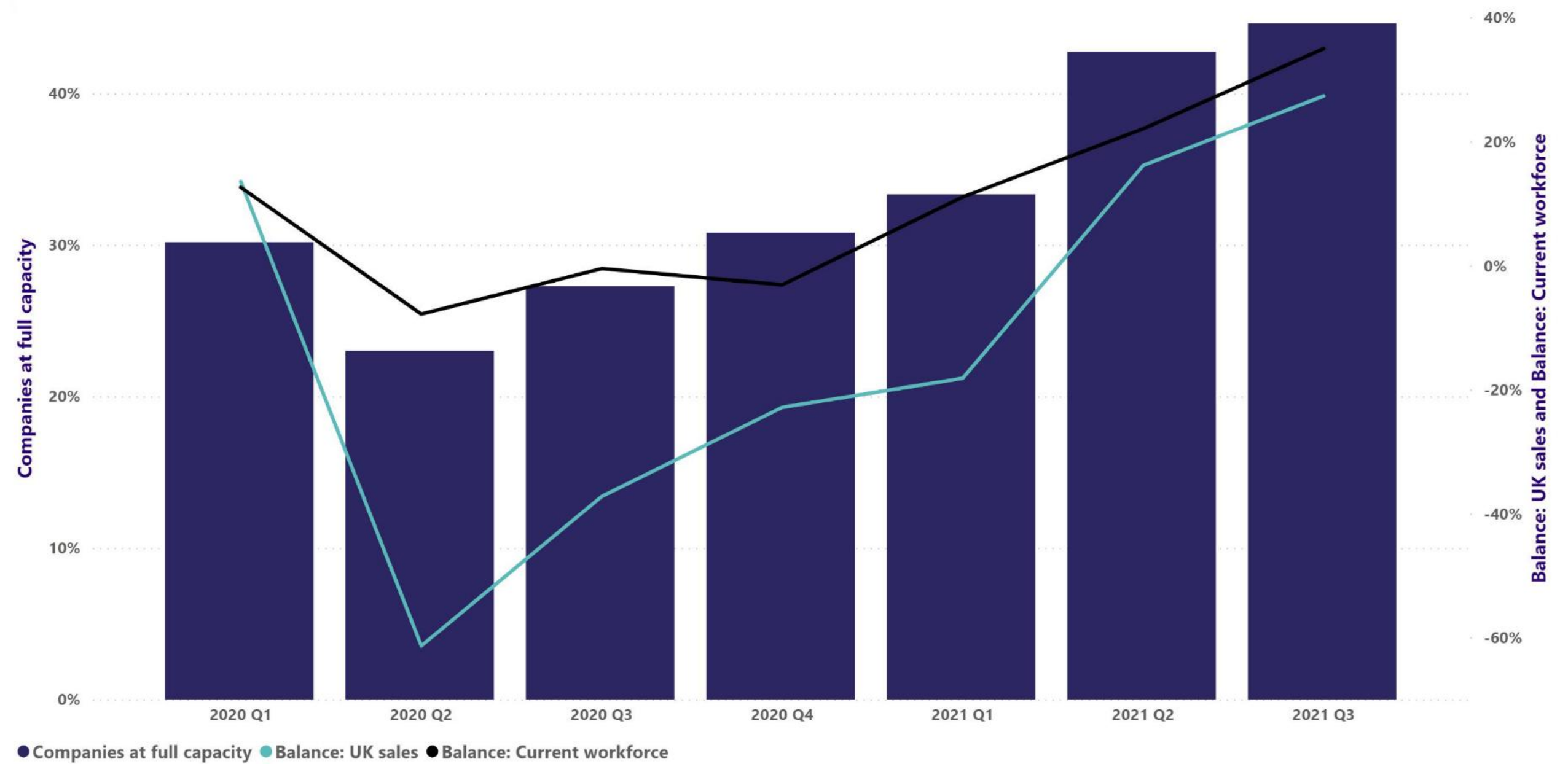
The balances are calculated as the percentage of respondents reporting an increase (e.g. in UK Sales) minus the percentage reporting a decrease.

A positive balance indicates growth in respect of a particular indicator, whilst a negative balance reflects contraction. This methodology is standard practice in surveys of this type.

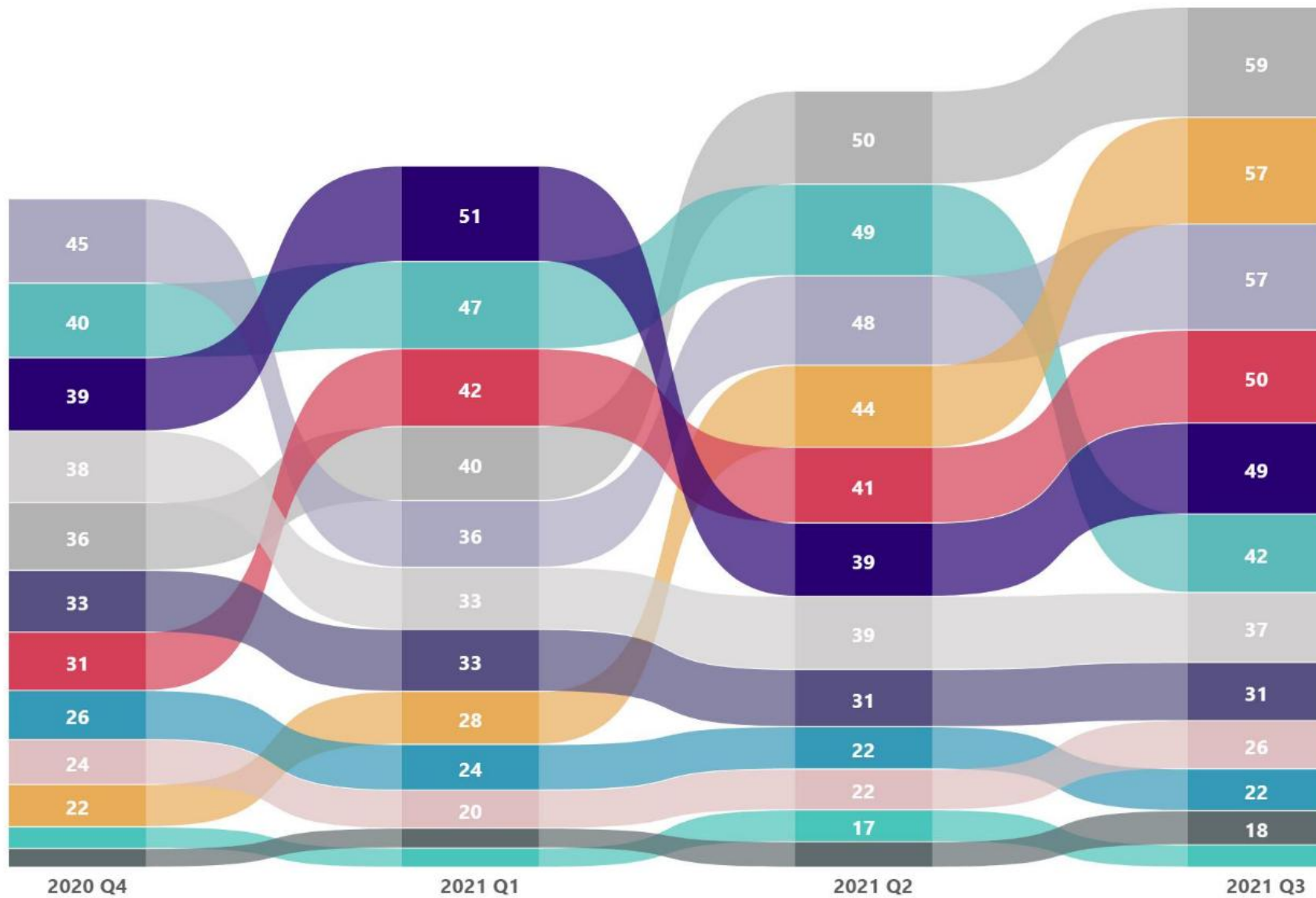




Business concerns

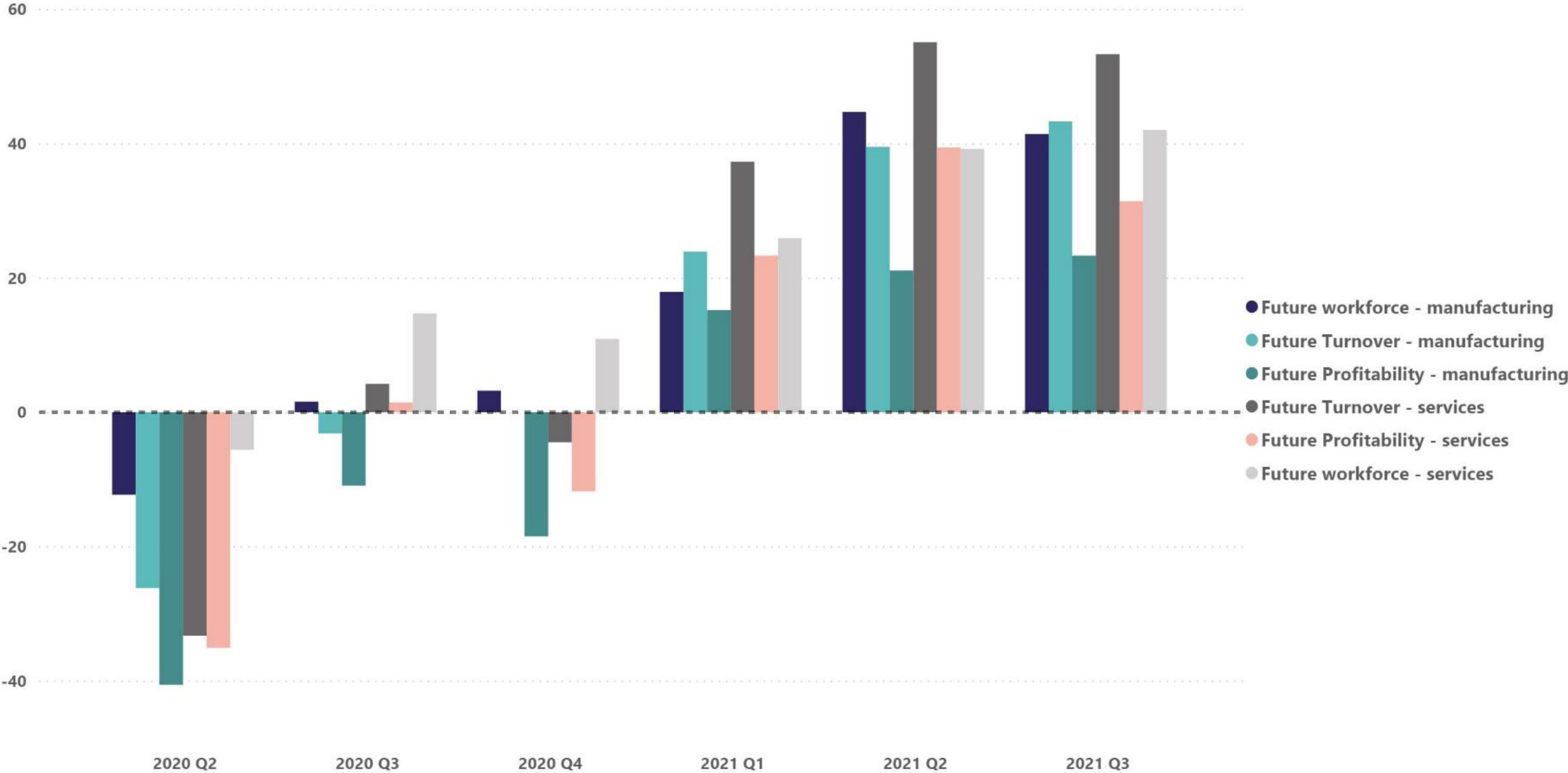


North East England
Chamber of Commerce



- Concerns - Inflation
- Concerns - Red tape
- Concerns - Staff costs
- Concerns - Staff shortages
- Concerns - Energy prices
- Concerns - Competition
- Concerns - Taxation
- Concerns - Business rates
- Concerns - Exchange rates
- Concerns - Interest rates
- Concerns - Congestion
- Concerns - Crime





Brexit



Chamber survey

The Chamber Global Team conducted a survey of our internationally trading members between 26th April – 24th May 2021, to understand how businesses have experienced the new trading relationship between the UK and the EU:

- 75% of actively trading businesses surveyed consider the EU-UK Trade and Cooperation Agreement to have had a 'negative' or 'very negative' impact on their business.
- 37.5% of businesses have seen their UK-EU trade fall since the beginning of 2021.
- 53% had difficulties with new customs processes.
- 66.7% of respondents experienced delays at port or a shortage of hauliers.
- 32% had found that their goods did not meet new Rules of Origin and could not benefit from tariff-free trade
- 38% had experienced unexpected or unquoted costs while trading with the European Union this year.

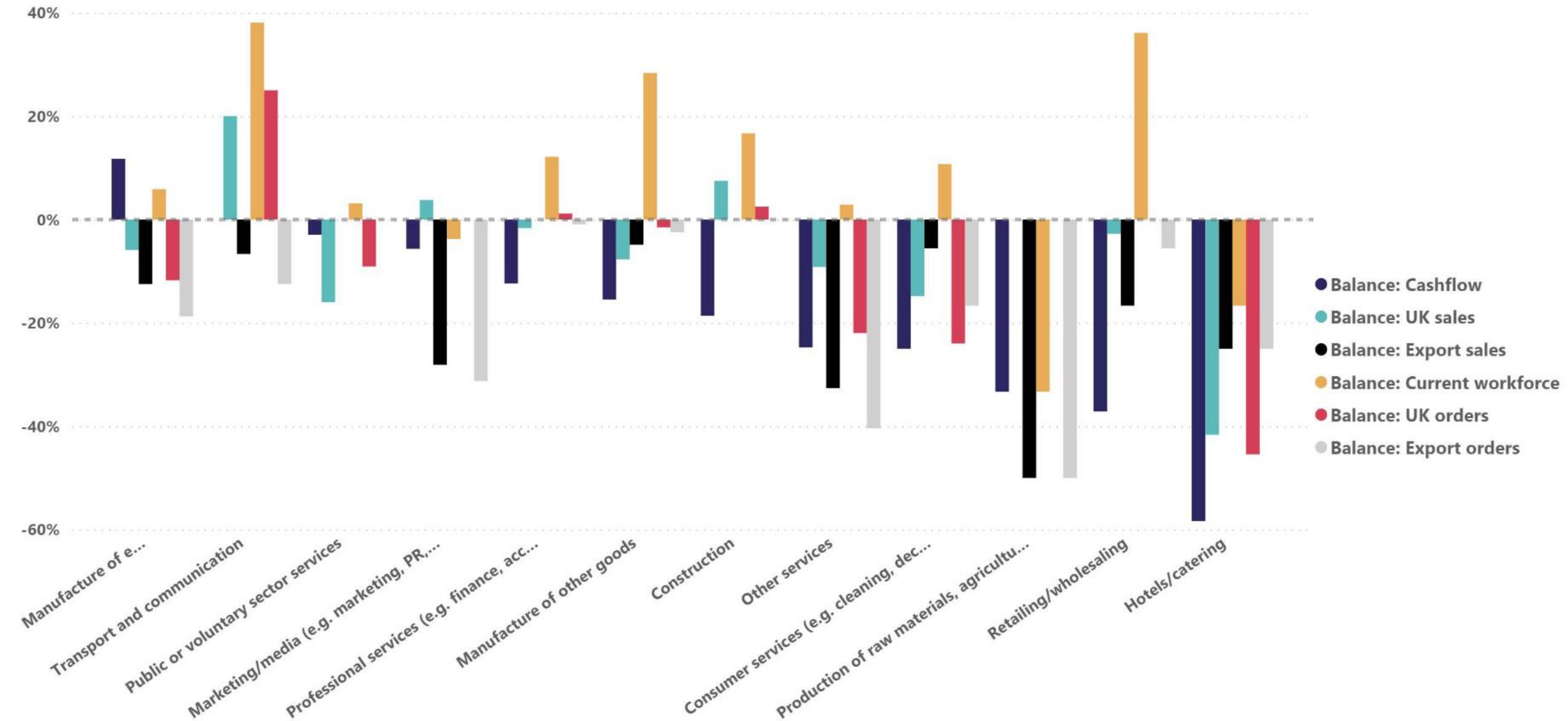
COVID-19 and Sunderland

COVID was not equal

Area	Case rate per 100,000 population	Death rate per 100,000 population
Sunderland	16,703.5	343
North East (inc. Tees Valley)	15,953.7	281.9
UK	13,502.5	243.8

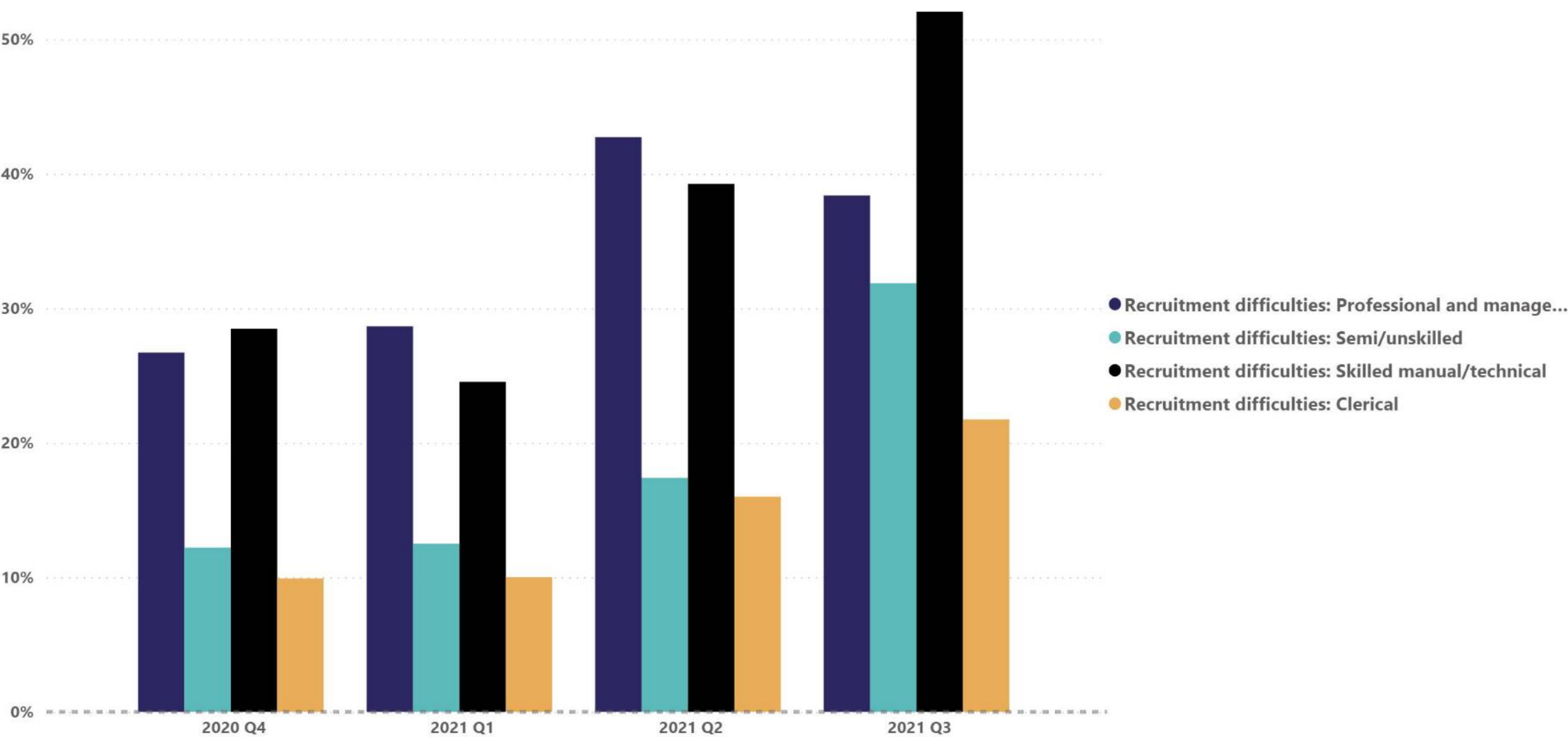
Source: <https://coronavirus.data.gov.uk/>. All data correct as of 31/10/21

12 month balance Q4 2020 - Q3 2021



Labour market





Questions?