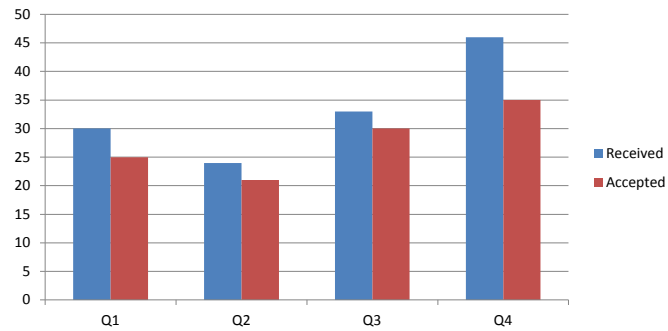


Number of children currently on LAC register with Sunderland @ 31st March 2017:-	116
Total number in LAC service:-	500
% Sunderland LAC accessing CYPs	23%

Number of Referrals per quarter:-  
2016/17

	Q1	Q2	Q3	Q4
Received	30	24	33	46
Accepted	25	21	30	35

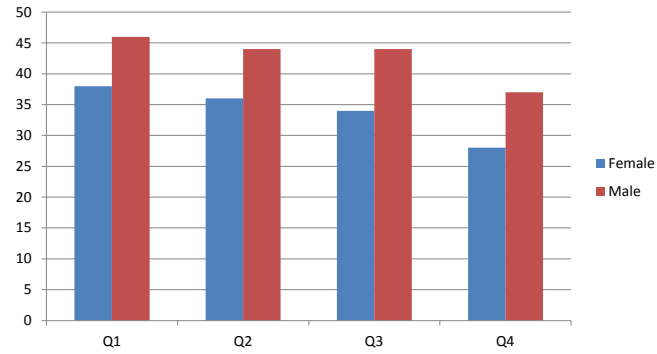


Comments:-

- There was an increase both in number of referrals received during 2016/17 (30 in Q1 to 46 in Q4) and number of referrals accepted (25 in Q1 to 46 in Q4)
- During 2016/17 just under 85% of referrals were accepted into the service. A meeting has been arranged between NTW and TfC to review those cases where referrals were not accepted into the service

Gender @ end of each quarter

	Q1	Q2	Q3	Q4
Female	38	36	34	28
Male	46	44	44	37
	84	80	78	65



Comments

- Slightly more boys than girls accessed the CYPs service during 16/17 (approximately 5% more)

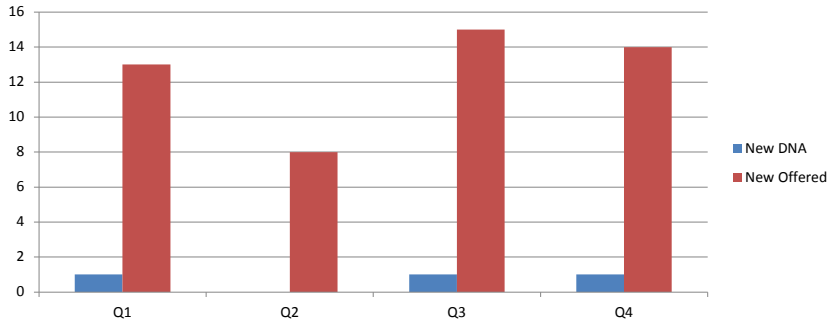
SOR

	Q1	Q2	Q3	Q4
Social Services	15	10	17	18
Education	2	2	6	3
Paediatrician	3	5	1	4
GP	4	1	0	3
Parent / Carer	1	0	4	0
Health Visitor	1	1	3	0
Family Member	1	1	1	1
Primary Health Care	0	2	1	0
Voluntary / Independent Sector	1	0	0	0
Crisis Team	0	0	0	1
Youth Offending Team	0	0	0	1
Self Referral	0	0	1	0
Children's Mental Health Services	0	0	0	1
Learning Disability Service	0	0	1	0
Grand Total	28	22	35	32

Comments:-The majority of referrals made to CYPs each quarter of which the majority were from social services

Number of DNA's per quarter:-  
2016/17

	Q1	Q2	Q3	Q4
New DNA	1	0	1	1
New Offered	13	8	15	14

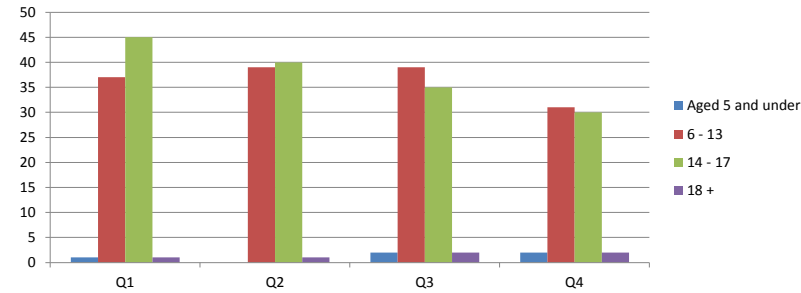


Comments:-

There were very few DNA's during 2016/17, out of a total of 50 new appointments offered there were 3 DNA's (6%)

Age Band Breakdown @ end of each quarter

	Q1	Q2	Q3	Q4
Aged 5 and under	1	0	2	2
6 - 13	37	39	39	31
14 - 17	45	40	35	30
18 +	1	1	2	2
	84	80	78	65



Comments:-

The number of children and young people open to CYPs was broadly consistent each quarter (approximately 240). There were very few under 5 and over 18's accessing the service. There were broadly similar numbers of 5-13 year olds and 14-17 year olds.

