

Executive Summary
Washington Area Committee SIB applications

Applications for Washington Healthy Lifestyles

Introduction and background

Following a detailed report to People Board in September outlining the successful delivery, demand and over performance re initial targets, the Washington Millennium Centre Development Trust requested the Board to recommend the approval of £25,000 SIB (previously aligned) to extend the project for a further year. The WMC Trust will match fund **up to** £15,000 and continue to seek ways to fund the project beyond SIB funding or if that fails, mainstream some elements of the project into the centre offer.

AREA STRATEGIC INITIATIVES BUDGET (SIB): CHANGE TO PROJECT APPLICATION

Organisation Name	Project Title
Washington Millennium Centre	Washington Healthy Lifestyles
Address	The Oval, Concord, Washington
Postcode	NE37 2QD
Telephone Number	0191 5163883
Contact Name	John Rostron/Karen Quigley
Email/Website	John.rostron@sunderland.gov.uk
Date revised project will start (month and year)	Date project end (month and year)
1 st April 2019	31 st March 2020

The Project

The original project was based on centre delivery and outreach work with partners. The Trust has learnt that participants prefer to have a one stop shop approach and where possible have everything at one site where they feel comfortable and have a positive experience in a supported environment. Feedback tells us the Millennium Centre is easily accessible, on a main bus route and the preferred option. The original project included trialling new technology, using MOT health checks to spread the reach of the project and using a variety of motivational tools to recruit and retain participants in the project. MOT health checks are part of the initial screening process for everyone. Therefore due to the demand on staff time to accommodate everyone into the project, limited time has been available to deliver the outreach work. The proposal is to cease the MOT element of the outreach work now (due to the high demand) and to no longer report on MOT checks. As this outcome has been achieved due to the numbers screened to date (259 over 50 years old) who attended one of the MOT health checks sessions at the centre, and in future only report on the numbers who undertake the 12 week programme and complete their key assessment reviews. The project moving forward will continue to be based at the Millennium Centre and will focus on the lifestyle project work, screening participants, signposting when appropriate and offering the 12 week course of advice, support and activities and will cease the stand alone MOT checks for anyone over 50 as everyone will be screened as part of their assessment. The mental health support will cease in March 2019.

The original application stated 100 Exercise on referral participants by March 2019. Proposal is to change that to 400 participants enrol on the health and wellbeing programme by March 2020 and call

the 'exercise referral' the 'health and wellbeing programme' when reporting to the People Board. The outcomes we report on will change to report number of people recruited on to the programme and number of people who complete a 12 weeks assessment and the number of people who remain on the programme at 24 weeks and complete a further assessment.

Based on the customer feedback and the evidence provided through data gathered during the 18 months of programme delivery, the success of the programme has mostly been due to the following:

- ✓ The target group and need for the programme was clearly identified
- ✓ Good communication between staff and community/client group
- ✓ Limited use of promotional materials and word of mouth and has main way referrals have been made
- ✓ Good facilities available at WMC ie gym, areas for group exercise and social areas
- ✓ Staff and facilities facilitate sustainability for the client group, beyond completion of the 12/24 week programme
- ✓ The core element of the project has exceeded meeting participants needs and the successes achieved by participants has been life changing in a number of cases
- ✓ Nearly all participants report positive outcomes from their participation in the project and these achievements are reducing the burden on local health services

This evidence has identified and highlighted the areas that have been successful and it is these that should continue to be developed and delivered and that a more focussed approach is the way forward, given the funding that is available. This ensures the limited funding is being targeted, to achieve the best outcomes and to address some of the health inequalities in Washington in the target cohort. It gives time to understand the impact changes in the way NHS services are delivered and what that means for the centre and how it can sustain elements of the project moving forward beyond 2020.

New Key Milestones

Extend Project by 1 year

What are your revised milestones?	
Milestones and Key Events	Forecast Dates
Referral route established with NHS steps to health	Jan 2019
Joint working with GP Alliance Washington Community Integration Team	April 2019
400 participants enrol on the health and wellbeing project by march 2020 (over 3 yrs in total)	April 2020
250 participants complete a 12 week assessment (over 3 yrs)	April 2020
130 participants complete a 24 week assessment (over 3 yrs)	April 2020

Funding

The funding will pay for Staff time (see breakdown) and for gym memberships for the first 12 weeks, the centre will fund the balance on staff costs, including on costs, the centre will fund all other costs associated with the project as set out in the budget. In addition the centre will absorb any additional costs due to more than 130 new participants enrolling during the third year.

What will the funding for the revised project be spent on		
Item and description	Total Cost	SIB Contribution
96 hours of fitness classes	£2400	£2000
Project manager 416 hours	£7521	£6000
Gym staff 1300 hours	£15080	£11000
Gym memberships	£11700	£6000
Admin Support	£1500	£0

Publicity	£500	£0
Mobile phone	£200	£0
Management fee	£4000	£0
Room hire	£4520	£0
Equipment	£1000	£0

When will the funding be spent – please tell us your revised spend profile								
	2017 / 2018				2018 / 2019			
Budget	Q1	Q2	Q3	Q4	Q1	Q2	Q3	Q4
					£7,000	£6,000	£6,000	£6,000
Total					£7,000	£6,000	£6,000	£6,000

New Outputs of the Project

400 Beneficiaries in total (increase of 300)

2 x new partnerships established - NHS Steps to Health and the GP Alliance Locality Community Integration Team, to work to eliminate duplication and collate data and information to shape this work moving forward beyond 2020.

What outputs will be delivered? – please tell us the revised output profile								
SIB Output code	Target 2018 / 2019				Target 2019 / 2020			
	Q1	Q2	Q3	Q4	Q1	Q2	Q3	Q4
H1 Number of programmes tackling health inequalities					1			
H2 number of beneficiaries	20	37	25	25	25	25	30	20

This application has been submitted through Area Committee's SIB consultation processes

This application:

1. Evidences a good track record of successful delivery and experience
2. Evidences it meets at least one of the key priorities of the Washington and co-ordinates with a range of activities and projects: **Health and Well Being**
3. Identifies additional match funding
4. This proposal has evidenced additional partnership working with
 - NHS Steps to Health
 - GP Alliance Locality Community Integration Team
5. This proposal provides the following additional outcomes and outputs
 - An increase of 300 beneficiaries across the project (3 years)
 - 240 participants will complete 12 week assessment
 - 130 participants will complete 24 week assessment

OFFICER RECOMMENDATION: Approve

Washington Area Committee: Environment and Green Space
Washington Environmental

Background Information

Following the presentation of the Local Services Area Delivery Plan, Place Board continue to oversee the delivery of the 2018/2019 service schedule. Members regularly reviewed the performance data presented by the Place Management Service and discussed opportunities to engage further with communities and improve environmental management across the area..

September Place Board recommends the purchase of a Gator Utility vehicle for use by SCC local services team in Washington.

Local Services Officers to:

1. Obtain relevant quotes from appropriate organisations – underway
2. Procurement - advised that once the specification us received from Fleet (quotes) then it would take about a month to process. Once awarded it would then be waiting for the company to supply and until we know which company was successful cannot estimate the timescale for delivery.
3. Local Services to indicate Service commitment to provision of ownership/on costs (7 years @ £200 per year)
4. Local Services to complete SIB application to confirm capital funding – November Area Committee

Applications for the purchase of Gator Utility Vehicle
Application (Internal)

Name of Project	Gator Utility Vehicle
Lead Organisation	SCC Local Services

Total cost of Project	Total Match Funding	Total SIB requested
£13,400	£1,400	£12,000
Project Duration	Start Date	End Date
On going	February 2019	

The Project

This application has been submitted at the request of Area Committee. The vehicle will assist the Area Team to service hard to reach dog and litter bins across Washington. The vehicle can also be used with regards to shrub and bed clearance work. This will address issues with waste collection and will aid the team with regards to reaching bins in parks which are currently inaccessible using fleet vehicles. The purchase of the vehicle will be subject to SCC Procurement procedures. This is likely to result in the ordering of the vehicle (dependent on receiving relevant quotes within the budget proposed) being implemented once the funding is available. The John Deere specification attached is one example/quote.

Key Milestones

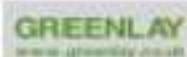
Objectives and goals	Forecast Dates
Procurement and purchase of vehicle agreed	November 2018
Purchase of vehicle	January 2019

This application has been submitted through Area Committee's SIB consultation processes

This application:

- 1. Has been submitted at the request of Area Committee**
- 2. Evidences it meets at least one of the key priorities of the Washington and co-ordinates with a range of activities in the area: [Environment and Green Space](#)**
- 3. Addresses an identified need in the area.**

OFFICER RECOMMENDATION: [Approve subject to confirmation of revenue/ownership costs](#)



Quote Id: 18264085

Prepared For:

City of Sunderland



Prepared By: **GEOFF LOWES**
GREENLAY GRASS MACHINERY LTD
Baker Road
Nelson Park West
Cramlington, NE23 1WL
Tel: +44(0)1670 733 330
Fax: +44(0)1670 700 087
Email: geoff@greenlay.co.uk

Date: 28 September 2018

Offer Expires: 28 September 2018

Confidential



Prepared For:
City of Sunderland
Parsons Depot
Washington, NE 37 1E2

Prepared By:
GREENLAY GRASS MACHINERY LTD
GEOFF LOWES
Baker Road
Nelson Park West
Cramlington, NE23 1WL
Phone: +44(0)1670 733 330
geoff@greenlay.co.uk

Quote Id: 18264085
Created On: 28 September 2018
Last Modified On: 28 September 2018
Expiration Date: 28 September 2018

Equipment Summary	Retail Price	Selling Price	Qty	Totale
JOHN DEERE HPX815E RH (MY18)	€ 16,086.97	€ 12,725.00 X	1	€ 12,725.00

Quote Summary	
Total Retail Price	£ 16,086.97
Total Discount	- £ 3,361.97
Invoice Price	£ 12,725.00
Balance to Pay	£ 12,725.00
Balance Due Excl VAT	£ 12,725.00

The information contained in this document has been used by Green & Longcore ("Green") for the purpose of assessing the proposal. This information will also be used to prepare your order. It is your responsibility to ensure that the information is accurate and complete. Green & Longcore will not be responsible for any errors or omissions in the information provided. The information is provided "as is" and without any warranty, express or implied. Green & Longcore will not be responsible for any damages, including consequential damages, arising from the use of this information. The information is provided for your information only and should not be used as a basis for any decision. The information is provided for your information only and should not be used as a basis for any decision. The information is provided for your information only and should not be used as a basis for any decision.

**JOHN DEERE**

Selling Equipment

GREENLAY
www.greenlay.co.uk

Quote Id: 18264085

Customer: City of Sunderland

JOHN DEERE HPX815E RH (MY18)				
				Retail Price
				£ 16,086.97
				Selling Price
				£ 12,725.00
Code	Description	Qty	Unit	Totals
57H1M	HPX815E (MY18)	1	£ 11,859.00	£ 11,859.00
HPX815E (MY18)				
Standard Options - Per Unit				
001B	Europe	1	£ 0.00	£ 0.00
1011	High-Performance All-Purpose (HPAP) Tires	1	£ 527.00	£ 527.00
Measurements: Front: 24 x 9.5-10; Rear: 24 x 12-10				
2005	18 in. Bucket Seat - Yellow	1	£ 0.00	£ 0.00
4006	Deluxe Canopy with 3-point Seat Belt and Mirror Kit	1	£ 1,180.00	£ 1,180.00
3000	Deluxe Cargo Box with Paint, Brake, Tail Lights	1	£ 0.00	£ 0.00
3120	Cargo Box Manual Lift with Prop Rod	1	£ 0.00	£ 0.00
8295	Data Tag kit factory installed	1	£ 120.00	£ 120.00
Available in: UK, Ireland, Germany, France, Benelux, Sweden, Switzerland and Austria				
8005	Front and Rear Windows; Windshield Wiper Factory Installed	1	£ 937.00	£ 937.00
Standard Options Total				£ 2,764.00
Dealer Attachments				
BM24754	Homologated Drawbar for 2-in. receiver hitch	1	£ 110.00	£ 110.00
BM25445	Deluxe Close-Off Panel for Poly or Glass Doors	1	£ 524.08	£ 524.08
BM25611	Glass Door Kit - Deluxe Cab	1	£ 821.29	£ 821.29
Dealer Attachments Total				£ 1,455.37
Retail Price				£ 16,086.97
Customer Discounts				
Auto Prorated Discount			£ 3,361.97	£ 3,361.97
Customer Discounts Total			£ 3,361.97	£ 3,361.97
Total Selling Price				£ 12,725.00



Quote No :18264085Customer Name: : City of Sunderland

Product features, prices and specifications are based on published information at the time of publication and are subject to change without notice. All trademarks and logos, including John Deere, the leaping deer symbol and the colors green and yellow used herein are the property of Deere & Company, unless otherwise noted. Products, product features, and other content on this site may only be accurate for products marketed and sold in North America.
Copyright © 1999-2018 Deere & Company. All Rights Reserved.

File Created: 26-Sep-2018

2018 JOHN DEERE HPX815E RH (MY18)

Key Features

Features operator conveniences such as high-back bucket seats, operator protection system, cup holders, glove box, and 12-V outlet



Operator's station

The Gator™ HPX is equipped with many standard features that provide for comfortable and convenient operation:

- Side-by-side high-back bucket seating provides room for one operator and one passenger
- Hip restraints serve as convenient and comfortable handholds
- Driver's seat is mounted on a slide-rail system that allows for fore-aft positioning
- Occupant protective structure (OPS) with three-point seat belts and passenger side grab handles, located on the front post, front dash, and on the outside of the seats
- Both seats tilt forward for ease of service and to keep them dry during outdoor storage
- Operator platform provides easy entry/exit for the operator and passenger
- Three cup holders are located within reach of the operator's station
- Hour-meter comes standard to assist in maintaining regular service intervals
- Traction assist (differential lock) is hand operated and conveniently located between the operator and passenger seats
- Glove box is located in the dash to provide a convenient storage area for small items
- Standard 12-Volt Direct Current (VDC) outlet conveniently located on the instrument panel
- Tank-mounted fuel gauge is easily viewed from the left side of the operator's seat
- Large, 75-mm (#-in.) diameter fuel tank fill opening allows easy fuel fill and helps to eliminate spillage
- Storage compartment is located under the front hood for extra storage space
- Display functions - light-emitting diode (LED) indicators for turn signals, low engine oil pressure, battery, operator presence, park brake, operator alert, and brake system failure
- Liquid-crystal display (LCD) indicators - glow plug, coolant temperature gauge, four-wheel drive (4WD), hourmeter, and service indicator



HPX815E display

Key Features

Road homologation in base equipment



Quote No :18264085 Customer Name: : City of Sunderland

Road homologation items come as base equipment and include:

- Light-emitting diode (LED) position lights
- Low- and high-beam LED headlights
- Front and rear turn signals and hazard lights
- License plate bracket with LED lighting and trailer plug
- Horn
- Cab frame with door nets
- Sharp-edge covers for cab frame
- Rear reflectors
- Side mirrors
- Cluster with speedometer

Key Features

Precision-engineered drive system optimizes acceleration, hauling, towing, and hill-climbing capabilities

- Two-speed fully enclosed oil bath transaxle allows superior pulling ability
- MFWD and rear transaxle are protected by skid plates
- Helical forward and reverse gears are used for quiet operation
- On-demand true 4WD system with an auto-locking front differential and dash-mounted electronic rocker switch is best-in-class: when the rocker switch is in the on (4WD) position, the front differential will automatically lock for extra traction when needed, but when the rocker switch is in the off (2WD) position, the vehicle will remain in two-wheel drive
- Provides exceptional traction in challenging conditions
- Maintains turf-friendly operation in 2WD mode
- Combined with rear-differential lock, can provide full, locking 4WD



The Gator™ HPX Utility Vehicle has a precision-engineered drivetrain system to better utilize engine power, to improve acceleration, hauling, towing, and hill-climbing capabilities. Power is transmitted from the engine through a continuously variable clutch system to the transaxle.

Precision-engineered drivetrain system

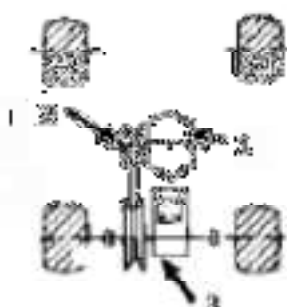
Key elements of the drive system include:

- Transaxle
- Engine
- Variable speed drive

Variable-speed drive



Quote No :18264085Customer Name: : City of Sunderland



Variable-speed drive

The variable-speed drive consists of two clutches and a drive belt:

- Drive clutch is attached to and rotated by the engine.
- Driven clutch is attached to and drives the transaxle.

Features include:

- A low- and high-speed forward gear offering:
 - Low range is 0 km/h to 19 kph (0 mph to 12 mph)
 - High range is 0 km/h to 40 kph (0 mph to 25 mph)
- Adjusts engine speed to the load to avoid getting bogged down when going uphill or through difficult terrain
- Overall reduction ratios:
 - Low 94:1
 - High 41:1

How variable-speed drive works:

- As the engine speed increases, the spring-loaded drive clutch is closed by weights being forced out by centrifugal force.
- As the drive clutch closes, the belt rides up to the largest diameter of the drive clutch and forces open the driven clutch.
- With the belt running in the smallest diameter of the driven clutch, the speed being transferred to the transaxle is increased.
- The driven clutch is designed to sense varying loads (inclines, mud, etc.) and constantly adjusts drive speed upward or downward so that engine rpm remains constant at constant throttle position.

Transaxle and mechanical front-wheel drive (MFWD)



Transaxle and MFWD

Key Features

Extra-durable deluxe cargo box ensures hard-working performance and longevity

The deluxe cargo box consists of a 15 percent glass-filled polypropylene composite material that eliminates rust and dents and reduces noise.



Quote No :18264085 Customer Name: : City of Sunderland



Tailgate lowered to 150 degrees
Deluxe cargo box tilt

The tailgate can be opened or removed for easier cleanout and to carry longer items. The tailgate has been improved, features truck-like performance, and can be operated with one hand.

The standard-installed lanyards can also be removed to lower the tailgate to 150 degrees for convenient loading and unloading tasks.



Integrated handle for
manual cargo box tilt
Integrated tie-down points

The deluxe cargo box is easier to latch, unlatch, raise, and lower with the integrated handle design and gas assist.

A prop rod is provided to hold the box in the upright position for operator convenience, as well as limit box pivot travel.

The deluxe cargo box offers integrated tie-down points for increased versatility. Tie-down points are located in the following areas:

- Four corners inside the cargo box bed
- Four points on the load guard directly behind the operator station (A)
- Tie-down bars on either side of the cargo box (B)
- Six points on the underside of the cargo box frame (circled)



Quote No :18264085Customer Name: : City of Sunderland

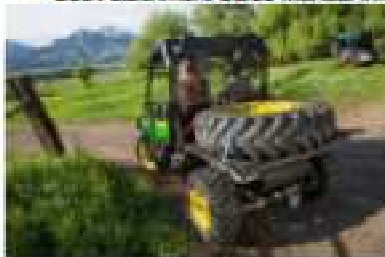


Integrated tie-down
point in cargo-box bed



Additional tie-down
points (TH 6X4 shown)

Converting deluxe cargo box to a flat bed
Optional accessories for the deluxe cargo box:
• See Attachment Sales Manual information



XUV825 shown



XUV825 shown

Specifications

Length	1143 mm (45 in.)
Width	1320 mm (52 in.)
Depth	304 mm (12 in.)
Volume	0.46 m ³ (16.4 cu ft)
Weight capacity	454 kg (1000 lb)
Dump angle	47 degrees

CAUTION: Carrying extra-long cargo that extends beyond the box can adversely affect stability.

Deluxe cargo box tailgate

The deluxe cargo box consists of a 15 percent glass-filled polypropylene composite material that eliminates rust and dents and reduces noise.



Quote No :18264085Customer Name: : City of Sunderland

Deluxe cargo box tailgate



Tailgate handle



Tailgate open

Key Features

Deluxe cab frame



Deluxe cab frame

The deluxe cab frame is available as attachments for field conversion when the operator has an incident where the structure is damaged and needs to be replaced.

Frame, design, and styling

Low center of gravity enhances stability



Stable design

The Gator™ HPX features 89 mm (3.5 in.) of travel in the rear to reduce jounce/bounce distance while under load.

The low center of gravity with high-back bucket or bench seats provide a secure feeling while operating the vehicle.

Performance and drivetrain

Rear axle housings

- Large sealed bearings for better protection and load-carrying capabilities
- Forged-splined shaft for increased torsional strength
- Nodular cast-iron housing for increased durability



Quote No :18264085Customer Name: : City of Sunderland



Nodular cast-iron rear axle housings

Performance and drivetrain

Enhanced all-wheel hydraulic disc braking with dual master cylinder



Hydraulic disc brakes

- Four-wheel hydraulic disc brakes
- Braided stainless-steel brake lines with banjo fittings for increased durability
- Hand-lever-operated mechanical park brake system
- Integral cast-iron rotors with wheel hubs for extended life
- Automotive-style dual-circuit master cylinder with a see-through reservoir
- Large front and rear brake calipers with sintered metallic brake pads
- Smooth-feeling engagement

Performance and drivetrain

Precision-engineered drive system optimizes acceleration, hauling, towing, and hill-climbing capabilities

- Two-speed fully enclosed oil bath transaxle allows superior pulling ability
- MFWD and rear transaxle are protected by skid plates
- Helical forward and reverse gears are used for quiet operation
- On-demand true 4WD system with an auto-locking front differential and dash-mounted electronic rocker switch is best-in-class; when the rocker switch is in the on (4WD) position, the front differential will automatically lock for extra traction when needed, but when the rocker switch is in the off (2WD) position, the vehicle will remain in two-wheel drive
 - Provides exceptional traction in challenging conditions
 - Maintains turf-friendly operation in 2WD mode
 - Combined with rear-differential lock, can provide full, locking 4WD



Precision-engineered drivetrain system

Key elements of the drive system include:

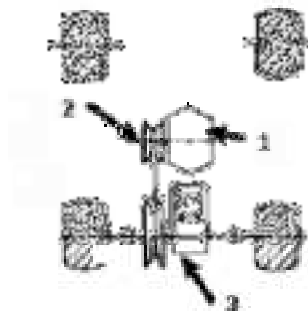
The Gator™ HPX Utility Vehicle has a precision-engineered drivetrain system to better utilize engine power, to improve acceleration, hauling, towing, and hill-climbing capabilities. Power is transmitted from the engine through a continuously variable clutch system to the transaxle.



Quote No :18264085Customer Name: : City of Sunderland

- Transaxle
- Engine
- Variable speed drive

Variable-speed drive



Variable-speed drive

The variable-speed drive consists of two clutches and a drive belt:

- Drive clutch is attached to and rotated by the engine.
- Driven clutch is attached to and drives the transaxle.

Features include:

- A low- and high-speed forward gear offering:
 - Low range is 0 km/h to 19 kph (0 mph to 12 mph)
 - High range is 0 km/h to 40 kph (0 mph to 25 mph)
- Adjusts engine speed to the load to avoid getting bogged down when going uphill or through difficult terrain
- Overall reduction ratios:
 - Low 94:1
 - High 41:1

How variable-speed drive works:

- As the engine speed increases, the spring-loaded drive clutch is closed by weights being forced out by centrifugal force.
- As the drive clutch closes, the belt rides up to the largest diameter of the drive clutch and forces open the driven clutch.
- With the belt running in the smallest diameter of the driven clutch, the speed being transferred to the transaxle is increased.
- The driven clutch is designed to sense varying loads (inclines, mud, etc.) and constantly adjusts drive speed upward or downward so that engine rpm remains constant at constant throttle position.

Transaxle and mechanical front-wheel drive (MFWD)



Transaxle and MFWD

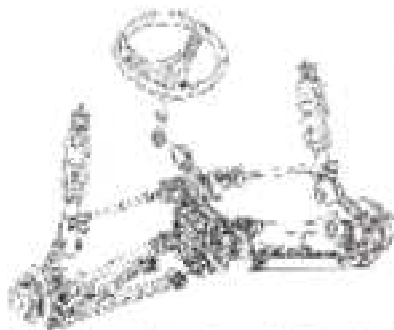
Performance and drivetrain

Automotive-type rack and pinion steering with A-arm front suspension

Full-vehicle suspension provides a smooth ride over challenging terrain.



Quote No :18264085Customer Name: : City of Sunderland



Automotive-type rack and pinion steering features include:

Automotive-type rack and pinion steering

- Enhanced design includes steel ball-bearings for smooth, responsive operation
- Tight turn radius of 3.35 m (11 ft) for excellent maneuverability
- Completely sealed for long life

MacPherson strut, single A-arm front suspension features include:

- 131 mm (5.15 in.) of total travel for better off-road control
- Nodular cast-iron 25-mm (1-in.) diameter spindles
- Automotive-type maintenance-free rubber torsional pivots for long life and quiet operation

Rear coil-over-shock suspension:

- 89 mm (3.5 in.) of total travel allows for excellent ride quality and improves hauling characteristics
- Semi-independent rear suspension

Engine

Powered by 854-cc, three-cylinder, liquid-cooled, four-cycle diesel engine



854-cc diesel engine

Powered by an 854-cc, three-cylinder, liquid-cooled, four-cycle diesel engine. It is rated 13.6 kW (18.5 hp) at 3400 rpm using standard ECE-R24.

The engine offers the following performance and reliability features:

- Overhead valve design for greater efficiency and fuel economy
- Full-pressure lubrication system
- Dry replaceable dual-element air cleaner with remote intake
- Indirect injection diesel with glow plugs helps to ensure fast starts in cold temperatures