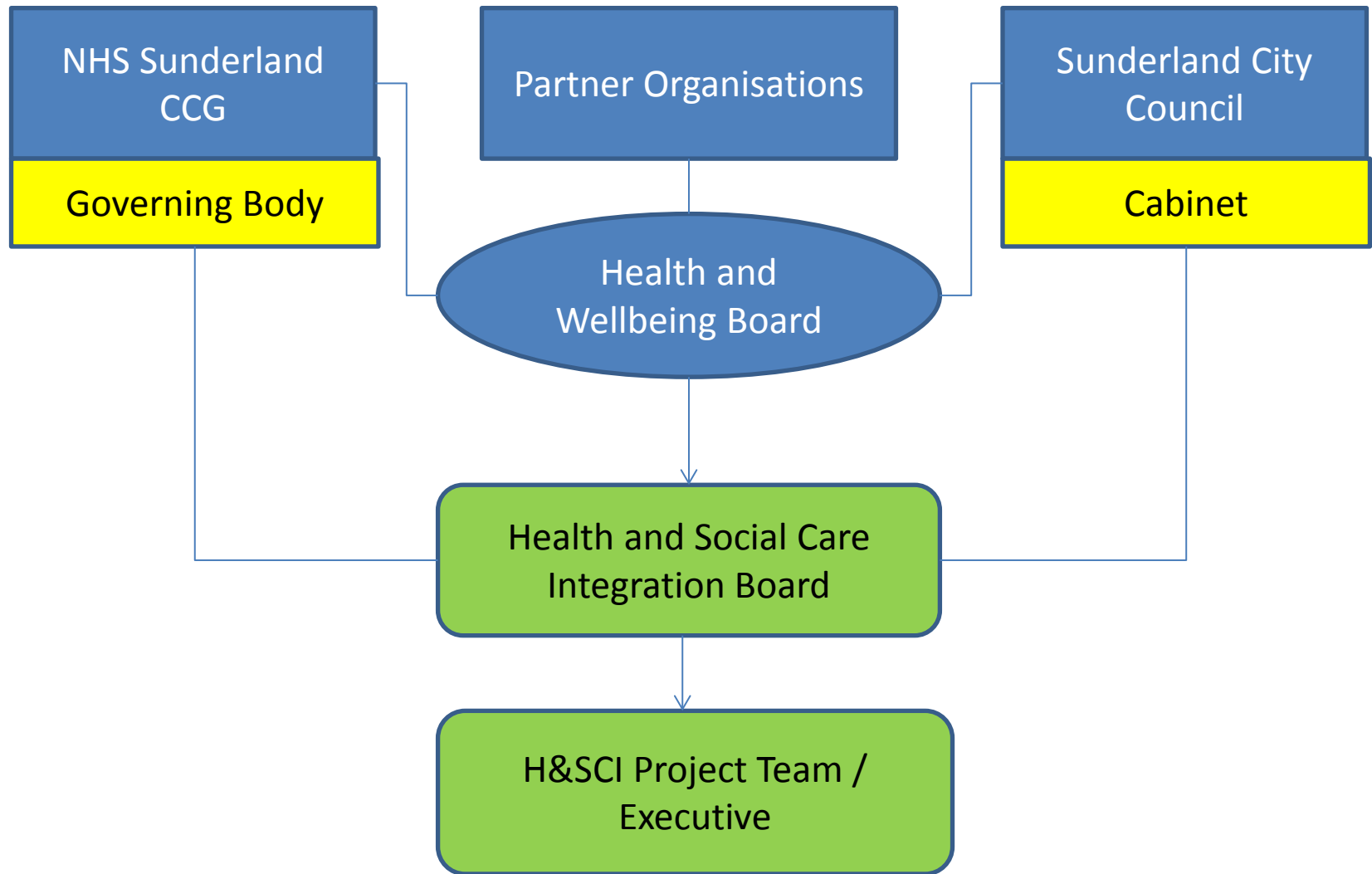


DRAFT FOR DISCUSSION ONLY



DRAFT FOR DISCUSSION ONLY

Health and Social Care Integration Board

CCG Governing Body

Sunderland City Council  
Cabinet

GP Chair / executive  
Chief Officer  
Chief Finance Officer  
Director of  
Commissioning, Planning  
& Reform  
Lay member

Vice Chair of HWB  
Assistant CEO  
Treasurer  
Chief Operating Officer  
(People's Directorate)  
Policy Lead for Health

Director of People's Services  
Director of Public Health