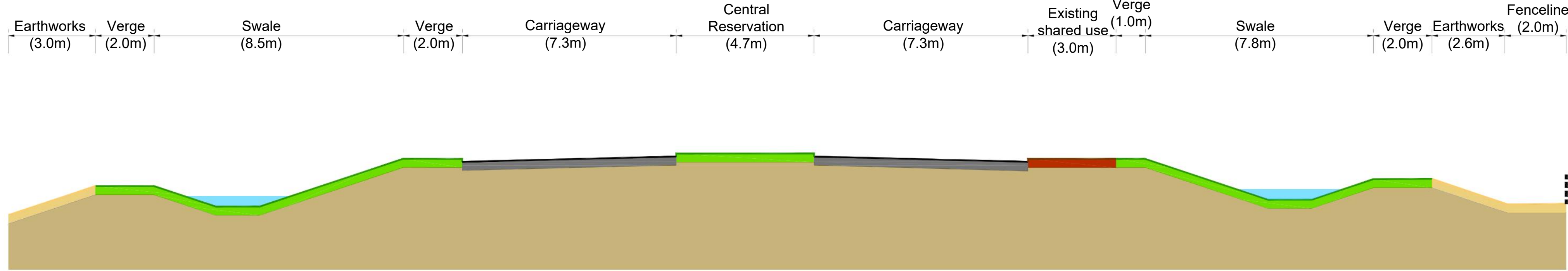


See Section A-A

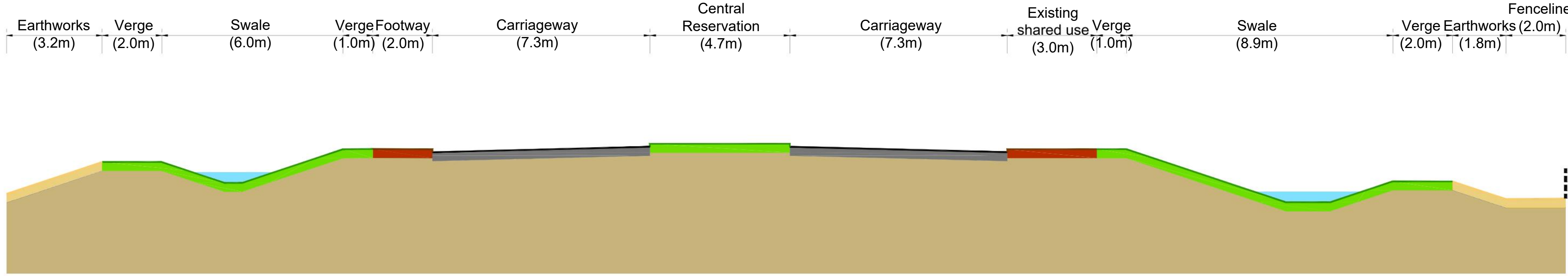
See Section B-B

SECTION A-A



Datum: 35.00m

SECTION B-B



Datum: 35.00m

NOTES

1. Do not scale from this drawing.
2. All dimensions in metres unless otherwise stated.

KEY

- Permanent Land Take
- Temporary Land Take

Rev.	Date	Revision details	Drawn	Checked	Approved
A	Aug'21	Design and land boundary amendments	RD	GR	GR

© This drawing is the property of SYSTRA Limited and the information can only be reproduced with their prior permission.



www.systra.co.uk

Milburn House,
Dean Street,
Newcastle upon Tyne,
NE1 1LE

T 0191 249 3816
E uk_newcastle@systra.com

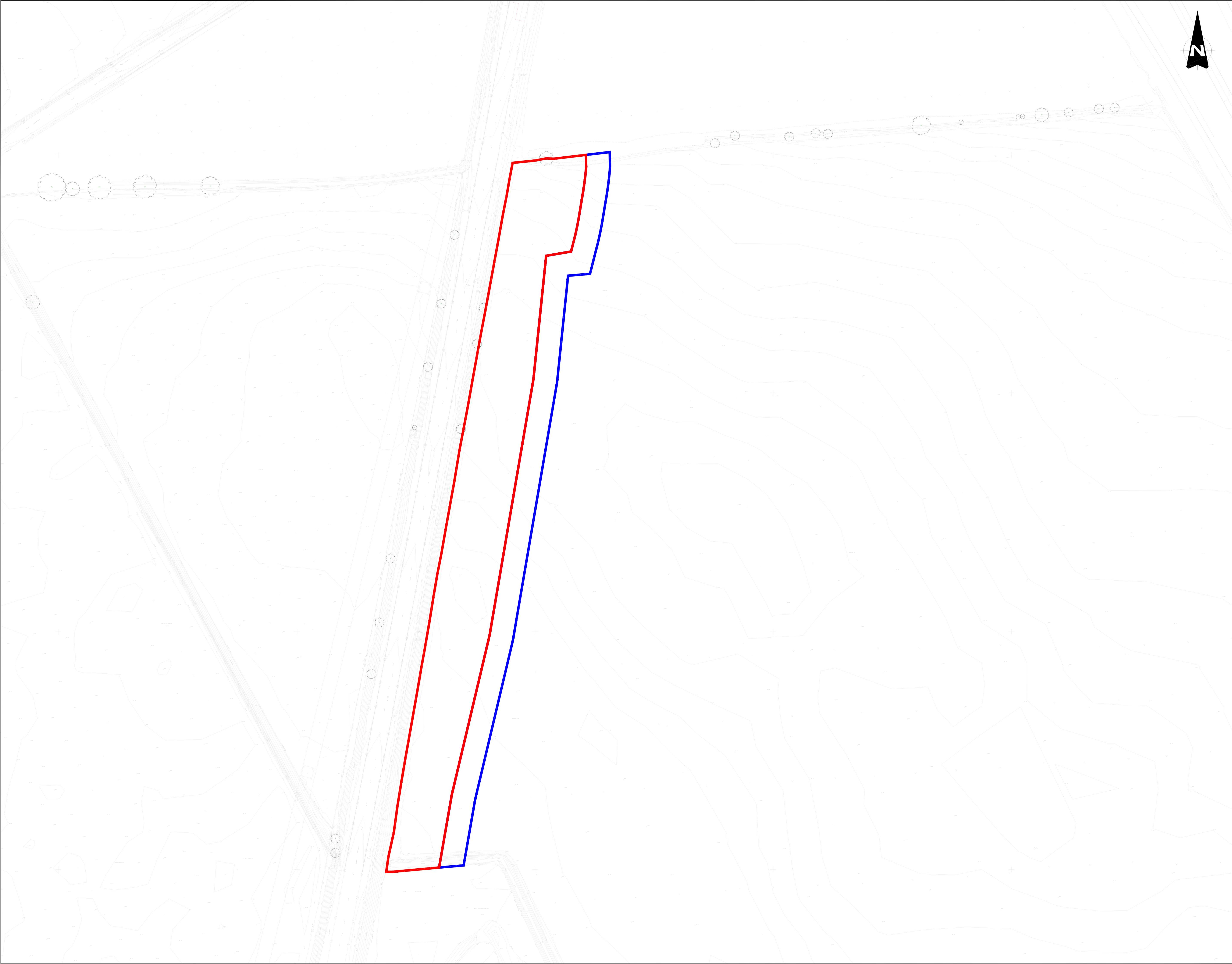


INTERNATIONAL
ADVANCED
MANUFACTURING
PARK

Project: IAMP TWO

Title: HIGHWAYS GENERAL ARRANGEMENT
LAND BOUNDARY SKETCH
Sheet 1 of 2

Drawn	RD	Checked	GR	Approved	GR	Original dtp. size	A0
Date of issue	Mar'21	Scale	1:500	Drawing Status	INFORMATION		
Drawing Number	18D22-SYS-HGN-Z4-DR-SK001					Rev.	A



- NOTES**
1. Do not scale from this drawing.
 2. All dimensions in metres unless otherwise stated.
- KEY**
- Permanent Land Take
 - Temporary Land Take

A	Aug21	Design and land boundary amendments	RD	GR	GR
Rev.	Date	Revision details	Drawn	Checked	Approved

© This drawing is the property of SYSTRA Limited and the information can only be reproduced with their prior permission.



www.systra.co.uk

Milburn House,
Dean Street,
Newcastle upon Tyne,
NE1 1LE

T 0191 249 3816
E uk_newcastle@systra.com



INTERNATIONAL
ADVANCED
MANUFACTURING
PARK

Client

Project

IAMP TWO

Title

HIGHWAYS GENERAL ARRANGEMENT
LAND BOUNDARY SKETCH
Sheet 2 of 2

Drawn	RD	Checked	GR	Approved	GR	Original dtp. size	A0
Date of issue	Mar'21	Scale	1:500	Drawing Status	INFORMATION	Rev.	A
Drawing Number	18D22-SYS-HGN-Z4-DR-SK002						