

Sunderland Royal Hospital Cardiff Project Cain Thomason / Leanne Davis



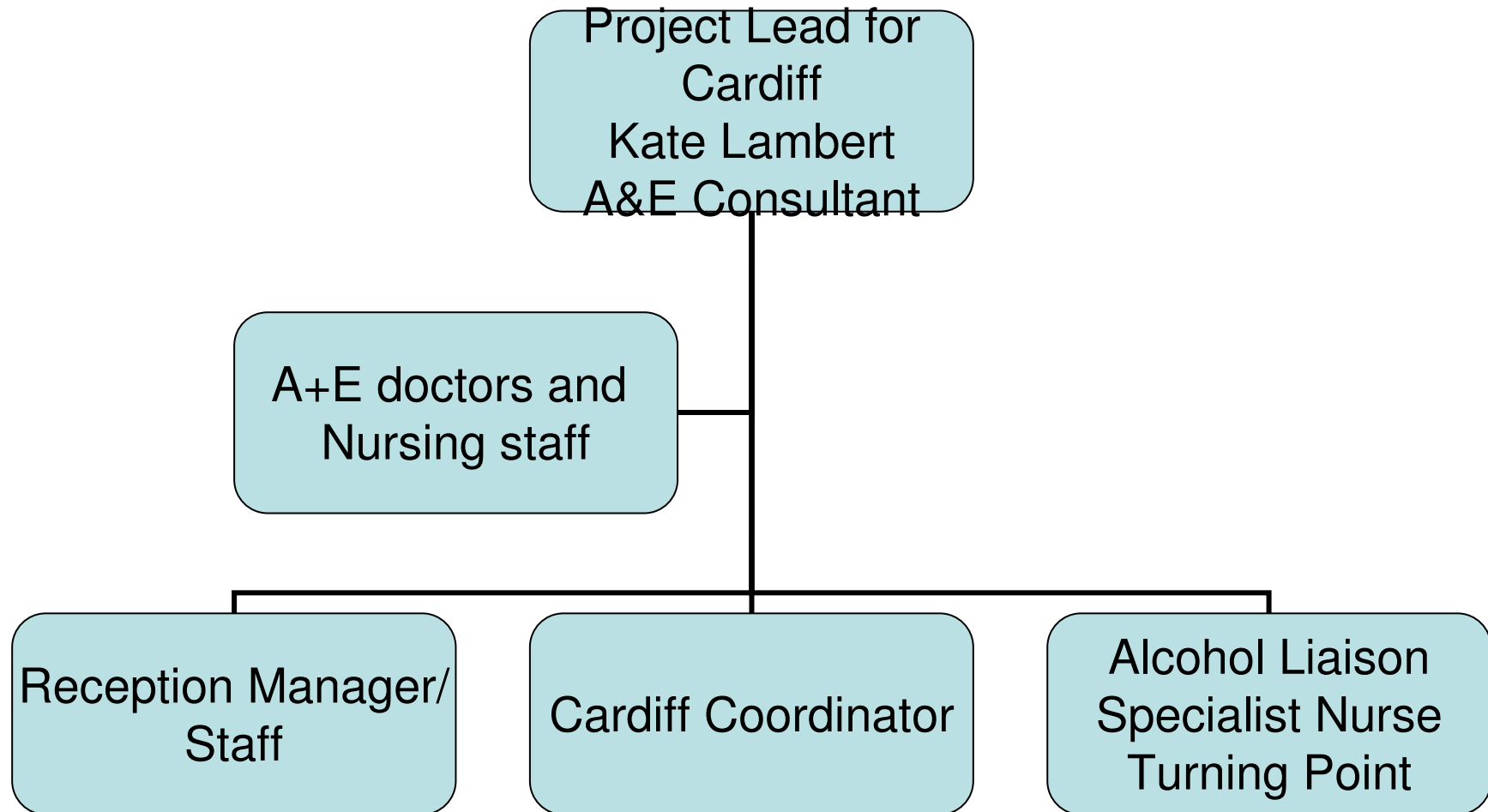
Background

- An initiative to tackle alcohol related violence was established under the Safer Capital Partnership in Cardiff led by Professor Jonathon Shepherd
- Intended to reduce the incidents of alcohol related violence and the consequences of it
- To fill the information void between the number of incidents occurring and those reported to the Police (BCS – only 25% of moderately serious offences reported to the police)
- Cost to the Health Service including the Emergency Department, Maxillofacial Clinics, etc

Overview of Cardiff Model

- Identify Attendees to A&E dept
- Assault due to alcohol
- Data gathering
- Basic analysis
- Sharing information
- Safer Communities for further analysis
- Police for strategic analysis
- Local Authority for licensing reviews

Hospital Project



Attendance to A&E

- On attendance patient is clerked into reception using HISS (Patient Admin. System)
- Minimum Dataset is available as a screen built into HISS system and completed by reception staff if patient has suffered alcohol related assault.



View Customer Defined Screen

Incident Type

Assault Location:

If other

Pub Name:

Street:

Locality:

Town:

County:

Postcode:

Inside/Outside Pub:

Weapon used:

Where was your last drink:

Reported to Police ☐

Options



<Return>

<Exit>

Use of Data

- All Data is protected by and in line with Caldicott Guidelines for sharing
- Anonymity is mandatory
- Consent required for discussion outside of Trust
- Linked with Alcohol Project
- Audited on regular basis

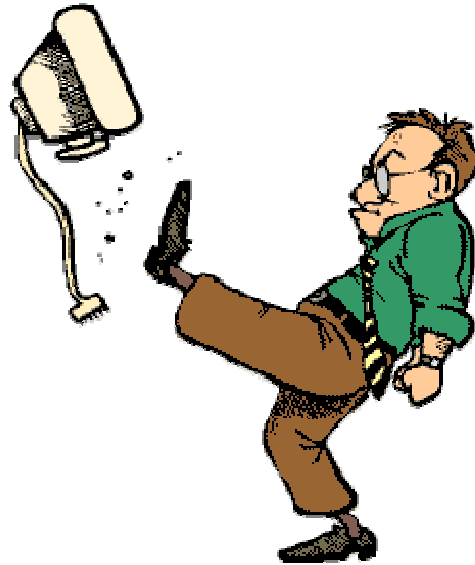
Use of data cont

- Data is shared on a two weekly basis with the Safer Sunderland Partnerships performance and information analysts
- Information is included on a monthly basis with the Police as part of their Tasking and Coordination Groups, particularly in relation to the Violent Crime Section
- When the information is of sufficient quality it will also be shared with Sunderland City Council's Trading Standards Department for licensing reviews

Numbers

- Total Alcohol Attendances to SRH A&E from start Oct 2009 – Oct 2010 6090
- Total of Cardiff presentations from Oct 2009 to end Sept 10 – 925
- 15.1% of alcohol related presentations to A&E fall under Cardiff Model.

Challenges



Challenges

- Patient willingness to impart information
- I.T. issues
- Data Completeness
- Staffing difficulties/ awareness training

Effectiveness

- Patient support within hospital/brief intervention training for staff
- Greater police presence in and around city centre
- Licensing reviews for problem premises
- Safer communities
- Less attendances to A&E
- Better use of hospital resources

Importance

- City Hospitals Sunderland duty of care to people of Sunderland
- Preventing reoccurrence through patient experience
- Reliable, caring, confidential = trust
- Reliability of information improves focus
- Links to the Safer Sunderland Partnership priority to reduce alcohol related violent crime

Next Steps

- To improve current data quality
- To link with Balance to gain access to additional data from the North East Ambulance Service
- To extend the Cardiff Model to Walk-In Centres across the City to improve intelligence and to help identify hot spots for alcohol related disorder

Conclusion

- Cardiff model effectively implemented
- Less risk and more alcohol support for victims
- Regular review through training/steering groups
- Improving service

Any Questions?

