

# Sunderland Railway Station and Holmeside Multi-storey Car Park

Update for Scrutiny  
12<sup>th</sup> October 2021

**City of  
Sunderland**

## Sunderland Station South Entrance

- Transforming Cities Fund grant has been confirmed.
- Implementation Agreement signed and completed early October, this formerly appointed Network Rail to carry out the works.
- Network Rail NR9 Contract with BAM will be in place by the end October. This is delayed but completion is still programmed for March 2023.
- The Station Change Process has been issued to the Train Operating Companies.
- All retail tenants have moved out and BAM have started on site with enabling, including a temporary ticket office and setting up a construction compound in Market Square.

# City of Sunderland



## Sunderland Station South Entrance

- Northern Power Grid and BAM are working together on protection measures to the station buildings sub-station.
- The existing south entrance closes to the public in December 2021.
- All public access to the station will be through the current North Entrance during the construction period. There will be no impact on train services.
- Demolition of the existing building starts in late December 2021.
- Construction to be completed and opened to the public in March 2023



**City of  
Sunderland**



## Sunderland Station Phase 2

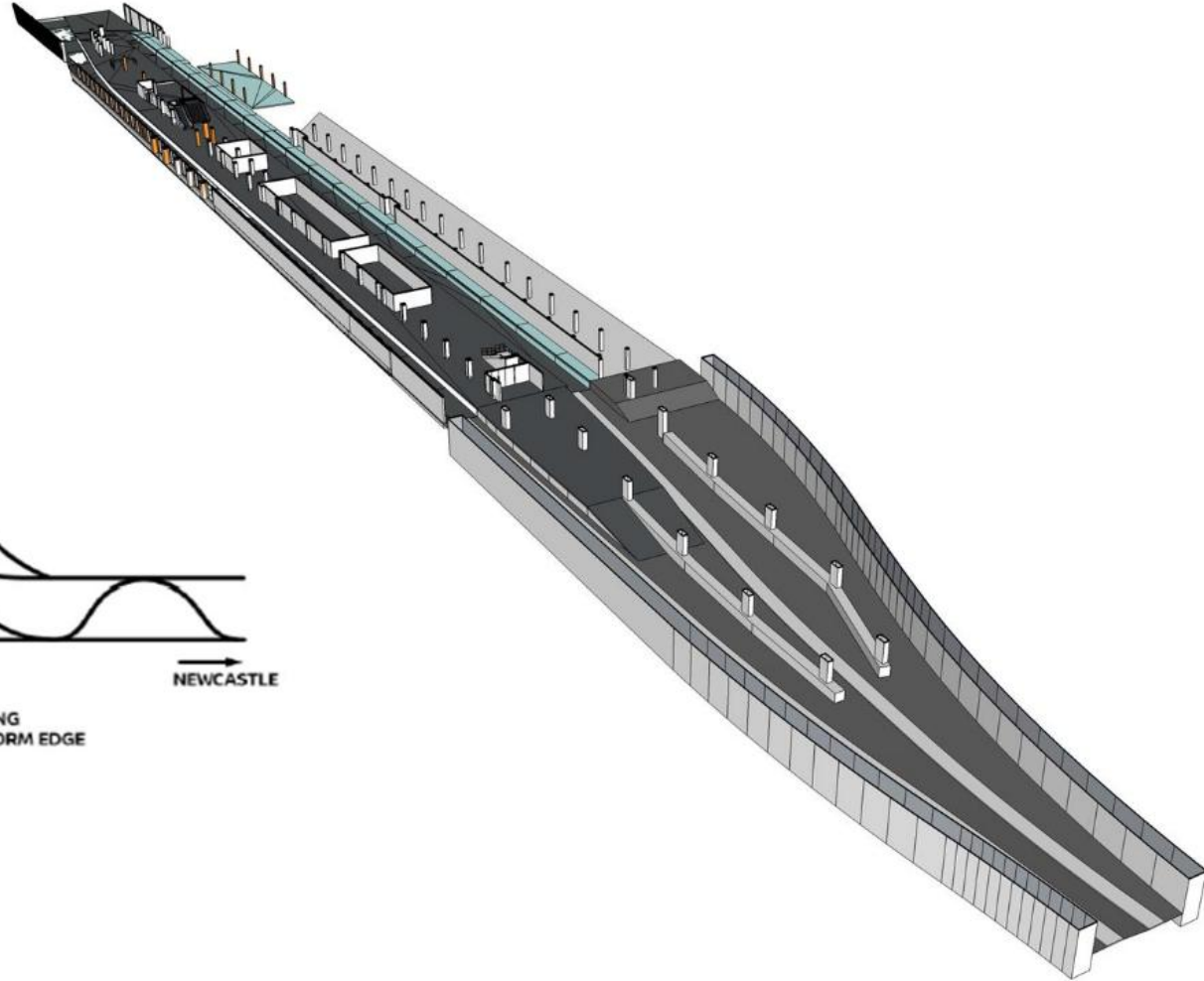
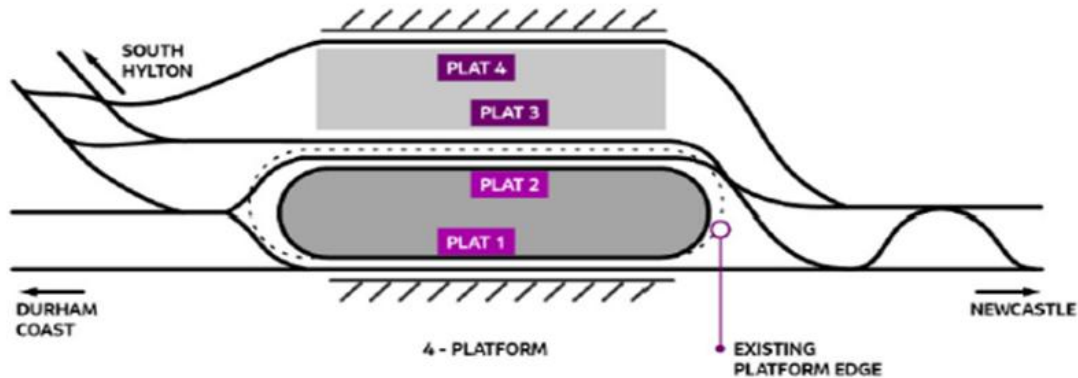
- Feasibility study is complete and outlines a range of options and has been positively received by Nexus and Train Operating Companies.
- Next stage is to develop the business case, working with the key stakeholders.
- Target to commence construction April 2023, following opening of South Entrance.



# City of Sunderland

## Sunderland Station Phase 2

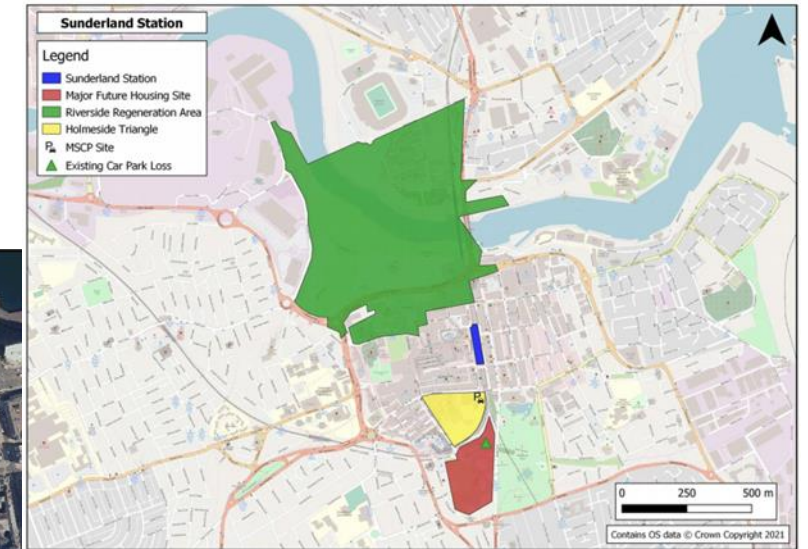
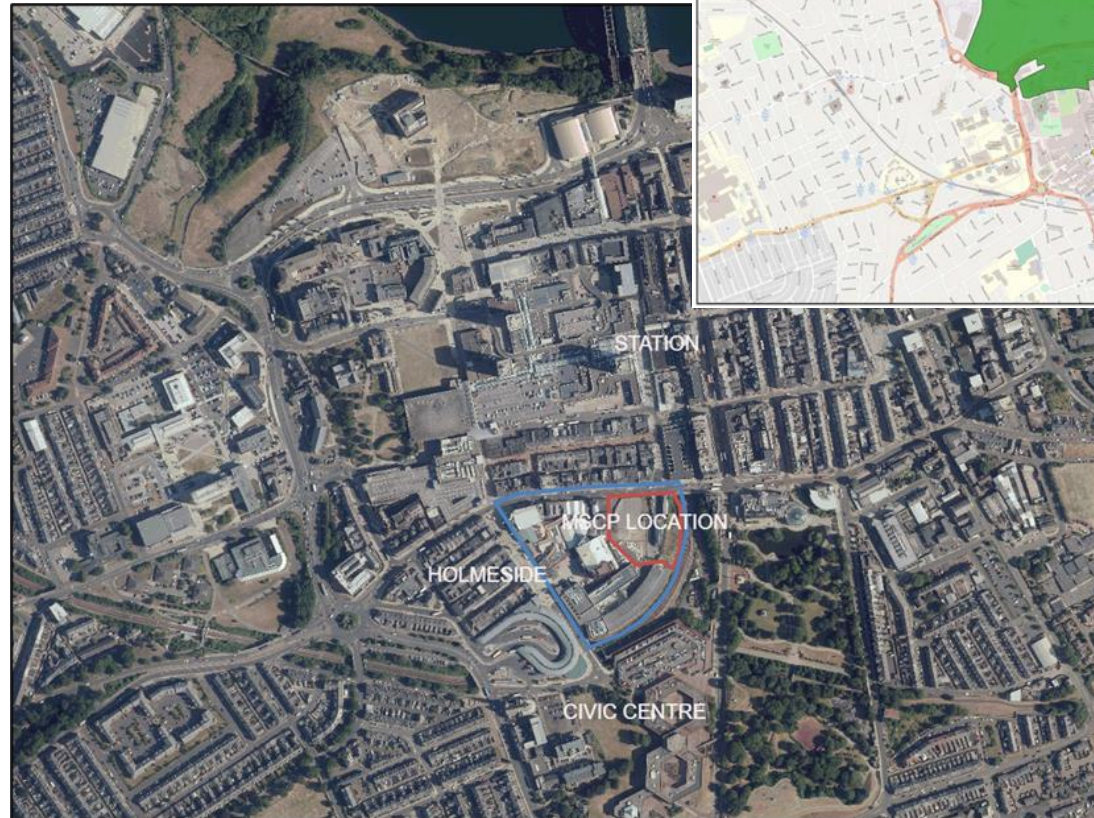
- The Feasibility study aims to increase Station passenger capacity and connectivity to the national rail network and has the backing of Network Rail and Transport for the North.
- Target is to implement capacity works in the station from mid 2025.





## Holmeside Multi Storey Car Park

- Upgrades to the Station will deliver wider connectivity to national and international infrastructure and ultimately increase passenger numbers.
- Demolition of the Civic Centre site will involve the loss of a 600 space city centre car park.
- A new car park is required to support the increased demand and to replace the Civic Centre car park.
- Provision of additional car park capacity will support retail and leisure for residents and visitors and reduce pressure on other City Centre parking.



## Holmeside Multi Storey Car Park

- Outline Programme
  - Design is currently on-going
  - Transforming Cities Fund Business Case has been submitted
  - Pre-application planning sub-mission mid-October 2021
  - 2 Stage Design & Build Tender issued by the end of October 2021
  - Tenders returned 21 January 2022
  - Planning Application submitted by end of January 2022
  - Planning Committee decision expected end of April 2022
  - Construction works May 2022 to end of March 2023

