

# Framework for the Inspection of Maintained Schools in England from September 2009

Children, Young People and Learning  
Scrutiny Committee  
15 October 2009

Lynda Brown  
Head of Standards

# Current Reporting Arrangements

- Section 5 Inspection Reports
- 12 months on: progress updates
- Detailed report on Notice to Improve and Special Measures



# Officer Support and Challenge for Schools

- Key Officers
- Shared Intelligence Process
- Concerns Policy

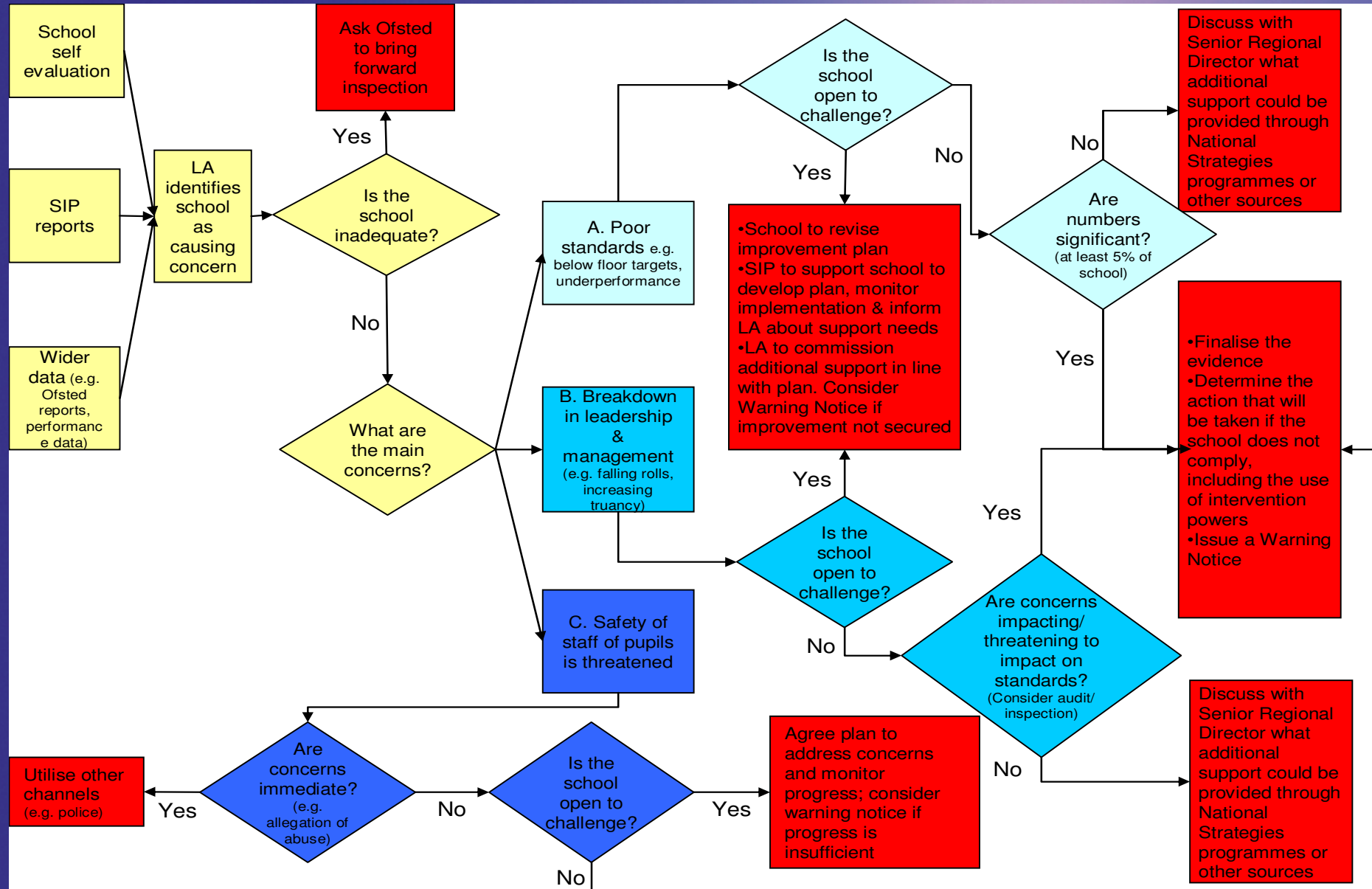
# Key Officers

- Head of Standards
- Chief Inspector
- School Improvement Support Officers
- School Improvement Partners
- Others

[illegible]



# Concerns Policy - Process



# The Evaluation Schedule for Schools (Ofsted 2009, Sept)

Chris Campbell  
School Improvement Officer

# The Seven Judgements for Pupils' Outcomes

1. Pupils' achievement and the extent to which they enjoy their learning, taking into account:
  - pupils' attainment
  - quality of pupils' learning and their progress
  - quality of learning for pupils with special education needs and/or disabilities and their progress
2. Extent to which pupils feel safe
3. Pupils' behaviour
4. Extent to which pupils adopt healthy lifestyles
5. Extent to which pupils contribute to their school and wider community
6. Extent to which pupils develop workplace and other skills that will contribute to their future economic well-being
7. Extent of pupils' spiritual, moral, social and cultural development



# The Provision

Judgements are as follows:

1. Quality of teaching, taking into account
  - use of assessment to support learning
2. Extent to which the curriculum meets pupils' needs, including where relevant, through partnerships
3. Effective of care, guidance and support

# Leadership and Management

Judgements are as follows:

1. Effectiveness of leadership and management in embedding ambition and driving improvement, taking into account
  - effectiveness of leadership and management of teaching and learning
2. Effectiveness of the governing body in challenging and supporting the school so that weaknesses are tackled decisively and statutory responsibilities met
3. Effectiveness of the school's engagement with parents



## Leadership and Management (cont.)

- Effectiveness of partnerships in promoting learning and well-being
- Effectiveness with which the school promotes equal opportunity and tackles discrimination
- Effectiveness of safeguarding procedures
- Effectiveness with which the school promotes community cohesion
- Effectiveness with which the school deploys resources to achieve value for money



# Final Three Judgements Made About a School

- Outcomes for individuals and groups of pupils
- The school's capacity for sustained improvement
- Overall effectiveness

# All Children and Significant Groups

- There is a clear focus throughout the evaluation schedule on the effectiveness of provision for and the achievement of ALL children and their attainment
- This is clearly linked to the 'Narrowing the Attainment Gap' agenda. There are clear expectations for progress for all students from KS1 to KS2 and from KS2 to KS4
- Where any group's performance is significantly different from the whole school's performance, it is likely to attract the attention of inspectors



# Some Changes

The focus on safeguarding has intensified

- Limiting Judgements
  - safeguarding
  - achievement
  - equality and diversity
- (Behaviour and Attendance)



## Further Information

- Ofsted has published a large number of guidance documents which are publicly available at:

<http://www.ofsted.gov.uk/Ofsted-home/Forms-and-guidance/Browse-all-by/Education-and-skills/Schools/Main-inspection-documents-for-inspectors>

# Inspection Schedule

- For 'good' and 'outstanding' schools – a five year cycle
- For satisfactory schools – 40% of these will have an Ofsted 'monitoring visit' between 12-24 months.
- NTI and Special Measures Categories: approx four - six monthly monitoring visits then re-inspection.
- For PRUs, Specials – three year cycle.
- Any school – any time where serious complaints have been received by Ofsted.



# Review

- Current arrangements
- Introduction of termly summary reports and action plans from Shared Intelligence and Ofsted Inspections
- Involvement in review of Concerns Policy
- Potential role of Scrutiny in Concerns Policy
- Specific reports
- Headteacher/Governor Presentation