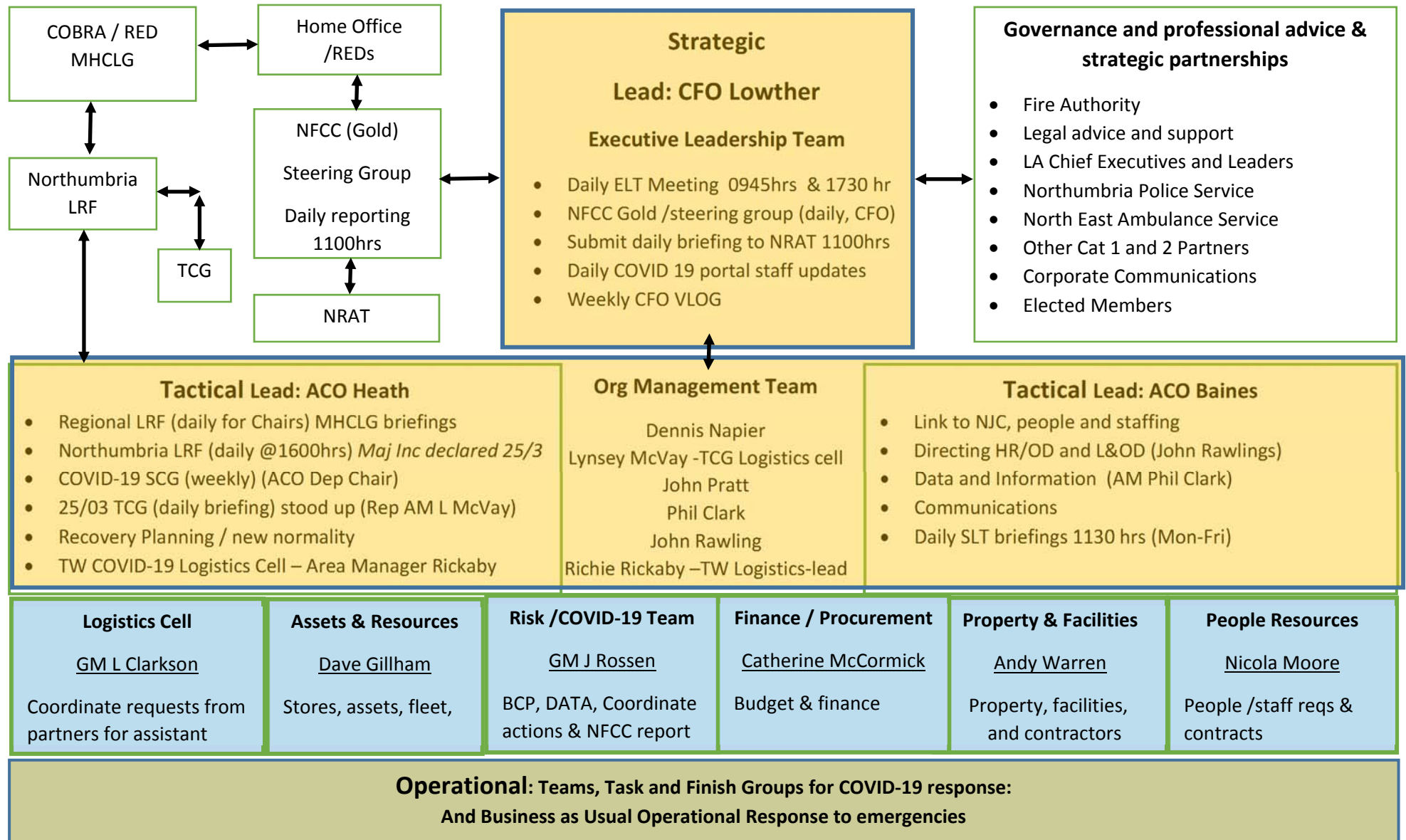


TYNE AND WEAR FIRE AND RESCUE SERVICE: COVID -19 HIGH LEVEL COMMAND, CONTROL AND COORDINATION SCHEMATIC V3.0 31 March 2020



Command, Control and Coordination of the response to COVID-19

The structure chart outlines the Services arrangements for ensuring that our collective resources are focused on the current threat whilst maintaining a sharp focus on our statutory duties both as a Fire and Rescue Service and as a category 1 responder under the Civil Contingencies Act 2004 and the associated regulations and guidance.

The schematic outlines the Strategic, Tactical and Operational layers of this response plan. These layers whilst representing the hierarchy are focused on the function and role they carry out rather than seniority of these included. In addition to the formal reporting and control lines, the informal communications and integrated working will be a key success factor.

Strategic, Tactical and Operational Layers

The ELT is the TWFRS Strategic role in directing and shaping the strategic response.

The Organisational Management Team provides Tactical level of command, coordinating and directs implementation of strategy and direction of the SLT.

The SLT is the Operational layer and provides the engine room of the organisation, implementing the actions and steps necessary to ensure our business as usual emergency response continues as well as the actions to directly and indirectly support the response to the COVID-19 pandemic.

Integrated Emergency Management Principles

Fundamental to the working and operations of the planning, response and recovery is the ability and effectiveness of all parts of the service and wider partnerships to collectively work together for shared outcomes and in collaboration. This principle embeds the concept of the sum being greater than the constituent parts of each service, team and group.

Key to Terms used:

LRF: Local Resilience Forum.

SCG: Strategic Coordination Group.

TCG: Tactical Coordination Group.

RED: Resilience Emergency Division [at Home Office]

NRAT: National Resilience Assurance Team

NFCC: National Fire Chiefs Council.

MHCLG: Ministry of Housing Communities and Local Government

COBRA: Cabinet Office Briefing Room (A).