

NORTH SUNDERLAND AREA COMMITTEE

AGENDA

Meeting to be held on Thursday, 15th November, 2018 at 5:30pm

VENUE – Bunny Hill Centre, Hylton Lane, Sunderland, SR5 4BW

Membership

Cllrs D. Wilson (Chairman), S. Foster (Vice Chairman - Place), R. Davison (Vice Chairman – People), M. Beck, R. Bell, B. Curran, K. Chequer, M. Elliot, B. Francis, G. Howe, J. Jackson, S. Leadbitter, D. MacKnight, A. Samuels, P. Stewart.

Part I

	PAGE
1. (a) Chairman's Welcome	
(b) Apologies for Absence	
(c) Declarations of Interest	
(d) Minutes of the last meeting held on 7 th June, 2018	1
2. The Path to Excellence – Phase Two – Presentation by South Tyneside and Sunderland NHS Partnership	7
(copy attached)	
3. Place Board Progress Report	28
(copy attached)	
4. People Board Progress Report	34
(copy attached)	

Contact: Joanne Stewart, Principal Governance Services Officer Tel: 561 1059
 Email: Joanne.stewart@sunderland.gov.uk
 Vivienne Metcalfe, Area Community Development Lead Tel: 561 4577
 Email: Vivienne.metcalfe@sunderland.gov.uk

Information contained in this agenda can be made available in other languages and formats on request.

5.	Partner Agency Reports	
	<ul style="list-style-type: none">- Report of the North Area Voluntary and Community Sector Network Update (copy attached)- Northumbria Police Update (verbal report)- Tyne and Wear Fire and Rescue Services Update (verbal report)	67
6.*	Strategic Initiative Budget (SIB) and Community Chest - Financial Statement and proposals for further allocation of resources	68
	(copy attached)	
7.	For Information Only and Not Discussion Current Planning Applications (North) Attached	84

* Denotes an item relating to an executive function

ELAINE WAUGH
Head of Law and Governance

7th November, 2018

At a meeting of the NORTH SUNDERLAND AREA COMMITTEE held in THE BUNNY HILL CENTRE, HYLTON LANE, SUNDERLAND on THURSDAY, 7th JUNE, 2018 at 5.30p.m.

Present:-

Councillor D. Wilson in the Chair

Councillors Beck, Bell, Chequer, Curran, Davison, Foster, Howe, Jackson, MacKnight and Stewart

Also in Attendance:-

Ms. Wendy Cook	-	SNCBC
Inspector Louise McClennan	-	Northumbria Police
Ms. Vivienne Metcalfe	-	Area Community Development Lead (North), Sunderland City Council
Ms. Ruth Oxley	-	VCS Network, SNYP
Ms. Allison Patterson	-	Area Co-ordinator (North), Sunderland City Council
Ms. Joanne Stewart	-	Principal Governance Services Officer, Sunderland City Council
Acting Chief Inspector Don Wade	-	Northumbria Police

Chairman's Welcome

The Chairman welcomed everyone and opened the meeting, inviting introductions from those in attendance and advising of the right to record proceedings.

Apologies for Absence

Apologies for absence were submitted to the meeting on behalf of Councillors Elliott, Francis, Leadbitter and Samuels

Declarations of Interest

Item 5 – Strategic Initiative Budget (SIB) and Community Chest – Financial statement and proposals for further allocation of resources

Councillors Bell and Stewart made open declarations in the application from Redhouse Community Association as members of the C.A.

Councillor Chequer made a DPI in the application from Southwick Community Centre as a member on the Management Board and left the meeting during consideration of the application. Councillor Bell also made an open declaration in the application as a member of the Community Centre.

Minutes of the last meeting held on 5th March, 2018

1. RESOLVED that the minutes of the last meeting of the Committee held on 5th March, 2018 be confirmed and signed as a correct record.

Place Board Progress Report

The Chairman of the North Sunderland Area Place Board submitted a report (copy circulated) in respect of the above matter.

(for copy report – see original minutes)

Councillor Foster presented the report which provided an annual update of the 2017/18 work plan, sought the Committee's approval for priorities to be taken forward and provided an update on the governance arrangements for 2018/2019.

Members having fully considered the report, it was:-

2. RESOLVED that:-
 - The annual performance update with regard to the North Sunderland Area Place Board Work Plan for 2017/2018 be received and noted;
 - The North Sunderland Area Place Board Work Plan Priorities for 2018/2019 be agreed; and
 - The area governance arrangements for 2018/2019 be received and noted.

People Board Progress Report

The Chairman of the North Sunderland Area People Board submitted a report (copy circulated) in respect of the above matter.

(for copy report – see original minutes)

Councillor Davison presented the report which provided an annual update of the 2017/18 work plan, sought the Committee's approval for priorities to be taken forward and provided an update on the governance arrangements for 2018/2019.

Members having fully considered the report, it was:-

3. RESOLVED that:-

- The annual performance update with regard to the North Sunderland Area People Board Work Plan for 2017/2018 be received and noted;
- The North Sunderland Area People Board Work Plan Priorities for 2018/2019 be agreed; and
- The area governance arrangements for 2018/2019 be received and noted.

Partner Agency Reports – North Sunderland Area Voluntary and Community Sector Network

The Voluntary and Community Sector Network submitted a report (copy circulated) which provided an update with regard to the Network.

(for copy report – see original minutes)

Ms. Ruth Oxley took the Committee through the report providing an update on the work being undertaken by the North Sunderland Area VCS Network and advising that they had met once since the last meeting of the Area Committee.

Ms. Oxley advised the Committee of presentations and information which had been received by the voluntary and community sector network during 2017/18 and invited questions or comments.

Members having fully considered the report, it was:-

4. RESOLVED that the content of the report and the opportunities and issues raised by the North Sunderland Area Voluntary and Community Sector Network be received and noted.

Partner Agency Reports – Northumbria Police

Acting Chief Inspector Don Wade of Northumbria Police gave an update to the Committee on the current position with regards to crime and anti-social behaviour data and of any on-going issues in the North Sunderland area.

Members were provided with a verbal summary of crime figures within each ward by Acting Chief Inspector Wade and advised of successful and forthcoming operations in relation to the North Sunderland Area of the city.

The Committee were informed that overall crime was down by 1.6%, which equated to 20 crimes, and that the national crime statistics way of recording had now levelled off so Officers could see the improvements and positive effects projects within the service were having.

Acting Chief Inspector Wade referred to ongoing issues in the Roker area of North Sunderland and commented that he understood the concerns of the local community so extra patrols had been deployed in the area and Officers were speaking with residents and community groups to continue to work through what was recognised as a difficult time for all. He commented that Officers were aware of the heightened tensions in the area but they were asking residents to work with the Police in a peaceful fashion to allow processes to be undertaken through the correct channels.

Councillor Jackson commented that she was pleased to hear that Officers were engaging with and reassuring residents in the Roker area as she had questions from her constituents as to what was happening in the area and she could now look to update them accordingly.

Councillor Jackson referred to the upcoming school summer break and commented how, historically, this would see some low level youth disorder in the area and was advised that the service were working with secondary schools directly and discussing the implications of anti-social behaviour to try and educate young people. Officers would also be patrolling key hot spot areas in the North Sunderland area and removing any alcohol from young people where present.

Councillor Howe referred to ongoing issues and complaints from residents in the Dykelands Road / Sea Road area in relation to speeding vehicles and was informed that the area had been previously investigated and surveyed and the results had not identified a significant problem. He was advised that if residents could advise Officers of particular times when there was a speeding problem they could look for the camera enforcement team to carry out their road survey then. Officers would need evidence to be gathered before any action could be taken forward.

Members raised concerns relating to motorbikes and quad bikes in the Town End Farm and Redhouse areas and were advised to inform residents to report every incident, even if they wished to do so anonymously, and then Officers could pick up on any trends and put actions in place to try and identify those involved and alleviate the problem.

Members thanked Acting Chief Inspector Wade and Inspector Louise McClennan for their informative report and thanking them for their attendance, it was:-

5. RESOLVED that the update from the Northumbria Police be received and noted.

Partner Agency Reports – Tyne and Wear Fire and Rescue Services

There being no representative present from the Tyne and Wear Fire and Rescue Services the item was deferred.

6. RESOLVED that the update from the Tyne and Wear Fire and Rescue Service be deferred.

Financial Statement and Proposals for Further Allocation of Resources

The Head of Member Support and Community Partnerships submitted a report (copy circulated) which requested Members to give consideration to a financial statement as an up to date position in relation to the allocation of Strategic Initiatives Budget and Community Chest and presented proposals for further funding requests.

(for copy report – see original minutes)

Ms. Metcalfe, Area Community Development Lead, presented the report drawing attention to the recommendations detailed within the report.

Having fully discussed the applications and Members having had any questions answered, it was:-

8. RESOLVED that:-
 - (i) the financial statements as set out in paragraphs 2.1 and 3.1 of the report be received and noted;
 - (ii) approval be given to the allocation of £138,984.80 SIB funding from the budget for 2018/19 towards the CLLD Projects as set out in the report;
 - (iii) approval be given to the allocation of £17,150 SIB funding from the budget for 2018/19 towards the Redhouse Community Centre Association Refurbishment Project;
 - (iv) approval be given to the allocation of £25,000 SIB funding from the budget for 2018/1918 to support the Southwick Community Centre Refurbishment Project;
 - (v) approval be given to the allocation of £35,000 SIB funding from the budget for 2018/19 for the School Summer Holiday 2018 Project;
 - (vi) approval be given to the alignment of £20,000 SIB funding from the budget for 2018/19 for the Self Supporting Community Associations Project; to be developed and presented to the North Sunderland Area People Board;
 - (vii) the application for St Peter's Community Led Local Delivery Project be rejected;
 - (viii) approval be given to the change to project for the existing Thompson Park House Project with the continued delivery of a play ranger programme;

- (ix) the thirteen approvals for Community Chest supported from the 2017/18 budget as set out in Annex 4 to the report be noted; and
- (x) the six approvals for Community Chest supported from the 2018/19 budget as set out in Annex 5 to the report be noted

The Chairman thanked everyone for their attendance and closed the meeting.

(Signed) D. WILSON,
Chairman.

‘The Path to Excellence – phase two’ public and stakeholder engagement: Join our journey

Local hospital services in South Tyneside and Sunderland provide great care delivered by highly committed teams of NHS staff. Phase Two of the Path to Excellence programme aims to build on these strengths and successes but also make sure we plan and prepare for the tidal wave of pressures we know are facing the NHS. Since 2016, our hospital teams have been working closely together, putting us in a very strong position to embrace the opportunities ahead and ensure a strong and vibrant future for both our local hospitals.

Local NHS partners are working together, across organisational boundaries, to address the pressures facing the NHS and Path to Excellence Phase Two is just one small part of how we **transform ALL care locally**. Changing hospital care alone will not solve the pressures facing the NHS and by working together we want to:

- Help people to stay fit and well so that they do not become unwell in the first place
- Improve community-based care outside of hospital which is close to peoples’ homes
- Improve the health outcomes for people living in South Tyneside and Sunderland

Why do we need to change?

1. No change isn’t an option – we need to solve the pressures facing the NHS

We cannot stay as we are if we want to keep providing high quality patient care – this is our driving force for change.

2. Workforce pressures – we need to address staff shortages and an ageing workforce

We face daily challenges to staff our wards and departments to a consistently safe level putting extra stress and strain on our amazing NHS staff.

3. Future demographic changes – we need to adapt because people are living longer

We have an ageing population. More people are now living with long-term conditions, surviving longer and increasing in number thanks to advances in medicine and technology. In the years ahead this will add even more demand for services.

4. Quality improvements needed – we need to embrace opportunities for improvement

There is too much unacceptable variation between our local hospitals that we must improve.

5. Finance pressures – we need to make better use of the financial resources allocated to our local health services

Our services currently cost more to deliver than the funding we have available and we must think innovatively about how we maximise our resources.

How do we plan to address these challenges?

Phase Two of the Path to Excellence programme involves the following key areas of hospital-based care and thinking about potential solutions for the future:

- **Emergency care and acute medicine** – the care provided when patients arrive at the Emergency Department or need emergency admission to hospital
- **Emergency surgery** - the care provided when patients are admitted to hospital as an emergency and require an immediate operation
- **Planned care (including surgery and outpatients)** – the care provided when patients are referred to hospital by their GP for a test, scan, treatment or operation.

In addition, we are also thinking about how we improve and develop clinical support services across both hospitals such as therapy services, clinical pharmacy and radiology services.

Our ambitions

Working together as bigger, stronger and more resilient clinical and nursing teams across both hospitals will help us reduce our reliance on temporary staff and attract more people to join us permanently. Our teams are already working towards creating a shared vision for each clinical service area which will look to deliver care differently in future and aim to:

- Work towards achieving 7-day consultant-led emergency care services
- Deliver the right care, at the right time, by the right person, in the right place
- Maximize the skills and expertise of our staff
- Improve access to services in the community
- Use technology to increase efficiency and improve patient experience
- Drive out duplication and waste

We believe doing this will be better for patients, improve quality of care, improve patient outcomes and experiences and make the best use of the financial resources we have available.

Phase Two - Engagement activity to date

Our engagement work on Phase Two of the Path to Excellence programme started back in December 2017 working with staff across both Trusts to understand the key challenges they face on a daily basis and where we need to improve. Hundreds of frontline staff have been involved in discussions over the past ten months and their feedback has been shared with our clinical design teams to develop the case for change for Phase Two.

We have also spoken to hundreds of patients as part of our Phase Two listening exercise which started back in February 2018 to help us understand people's views and recent experiences of using emergency care services or coming into hospital for planned care in South Tyneside and Sunderland. In July 2018, we published our draft 'Case for Change' for Phase Two of the Path to Excellence programme which summarises all of our work to date led by our clinical design teams, including feedback from our staff and patients. It explains why we need to continue working together to improve care for patients and create local hospital services which are fit for the future.

What happens next?

From Saturday 13 October and over the next eight weeks, we will be out and about visiting local communities, speaking to patients using local hospitals and healthcare services and attending a series of key stakeholder meetings to share our draft 'Case for Change' for Phase Two and help people understand why local hospital services must change for the future.

Date	Time	Location
Saturday 13 October	9am – 5pm	Pallion Health Centre, Sunderland
Monday 15 October	9am – 5pm	Houghton Primary Care Centre
Tuesday 16 October	10am – 4pm	South Shields Asda
Monday 22 October	10am – 3pm	Ingham Wing Main Entrance, South Tyneside District Hospital
Thursday 25 October	10am – 3pm	Main Outpatients, Palmer Community Hospital
Thursday 25 October	10am – 4pm	South Shields Asda
Monday 29 October	10am – 3pm	Kayll Road Entrance, Main Concourse Sunderland Royal Hospital
Tuesday 30 October	9am – 5pm	Grindon Lane Primary Care Centre, Sunderland
Wednesday 31 October	9am – 5pm	Bunny Hill Primary Care Centre, Sunderland
Friday 2 November	10am – 3pm	Main Outpatients Entrance, Sunderland Eye Infirmary
Wednesday 7 November	9am – 5pm	Cleadon Park Primary Care Centre
Thursday 8 November	9am – 5pm	Flagg Court Health Centre, South Shields
Friday 9 November	9am – 5pm	Washington Primary Care Centre

Our planned activity aims to socialise the issues, explain the current gaps in quality, and allow an opportunity for patients and the public to understand why we must change and share their views on what's important to them when accessing hospital services and receiving hospital care. It will also provide stakeholders and the public with opportunities to influence the process, providing decision makers with valuable insight about the draft 'Case for Change'.

How can you help?

We would appreciate your support in helping us to spread information about Phase Two of the Path to Excellence programme. In addition to our roadshow activity above, we will be attending

local meetings including area committees, VCS networks, patient groups and key stakeholder briefings across South Tyneside and Sunderland. If there are any forums which you would like us to attend please do let us know.

We also have a number of materials about Phase Two – we are happy to provide copies of these so that you can distribute these within your networks:

- Draft case for change and summary document
- Easy Read version of draft case for change
- Video animation on draft case for change (available at www.pathtoexcellence.org.uk) which explains some of the pressures and challenges facing local hospital services in South Tyneside and Sunderland and why services must change.
- Short survey of public and patient (or their carers) views on what's important to them when accessing hospital-based care. The survey is available in print and online at: <https://www.surveymonkey.co.uk/r/p2ephasetwo>.

How to get involved

- Visit our website: www.pathtoexcellence.org.uk
- Watch the new Phase Two [animation video](#)
- Read the [Draft full case for change](#), [summary case for change](#) or [Easy read version](#).
- Complete our survey: <https://www.surveymonkey.co.uk/r/p2ephasetwo>
- Email us: excellence@nhs.net
- Call us: 0191 2172670
- Follow us: [facebook.com/NHSEexcellence](https://www.facebook.com/NHSEexcellence)
@NHSEexcellence

This document is available in large print and other languages. Please call 0191 217 2670.

Working together

to improve hospital services in
South Tyneside and Sunderland

Phase Two of the Path to Excellence programme



Summary of the Draft Case for Change - July 2018

Draft case for change animation video
<https://www.youtube.com/embed/RZGrXM2LKcc?rel=0>



Why we need to transform all care locally



Why we need to transform all care locally

Changing hospital care alone will not solve the pressures facing the NHS.

Care in local communities needs to expand and develop as that is where the vast majority of care takes place.

More needs to be done to improve the health and wellbeing of the population with a focus on preventing people becoming unwell in the first place.

This needs to happen while we balance our finances and plan for the future of services to support the growing population demands.



Why we need to transform all care locally cont'd

In order to transform health and care locally there are three main pillars:

Prevention

This is how we work together to encourage everyone living in South Tyneside and Sunderland to take more responsibility for their own health and wellbeing so that they do not become unwell with wholly avoidable illnesses.

Out of hospital

This is how NHS, social care and community and voluntary organisations work together to provide more responsive care to prevent avoidable hospital admissions and to get people out of hospital as soon as they are able with more care at home and closer to home.

In hospital

This is the Path to Excellence programme which is the subject of the draft case for change document and this summary document.





Key challenges



Key challenges

1 No change is not an option

We need to achieve sustainability for patient safety reasons.

We have frail, vulnerable services.

We need to address the poor health outcomes of our populations.

We need to address the increasing demands on hospital services when community care is the best care.

We need to address the increasing demands on primary care when self-care is the best care.



Key challenges cont'd

2 Workforce pressures

This is a very common theme throughout our draft case for change.

We face daily challenges to staff wards and departments to a consistently safe level.

We are relying on the goodwill of staff working longer hours or extra shifts - this poses a risk to the health and wellbeing of our staff and they have told us that this cannot continue.

We are relying on employing a temporary workforce (locum/agency staff) which is not only expensive but not good for quality of care.

Having small and separate teams in each hospital means:

- we often face staff shortages and have less resilience
 - a number of important clinical quality standards, that really improve outcomes for our patients, cannot currently be delivered
 - it is difficult to attract and retain more staff due to poor work/life balance
 - we cannot deliver the highest quality of training for junior doctors which reduces our recruitment chances from an already small pool of trainees which all Trusts in the region are competing to recruit from
-



Key challenges cont'd

3 Future demographic changes

The majority of patients admitted to our hospitals are over 80 years old, often with multiple long-term conditions, very poorly and in need of complex care and support from our staff.

Our aging population will continue to grow, increasing the demand on hospital services even further.

We currently have an ageing workforce, which will only exacerbate our staffing pressures as more colleagues retire.

More people living with long-term conditions (e.g. diabetes, breathing problems, dementia) are surviving longer and increasing in number and will only add more demand for services.



Key challenges cont'd

4 Finance constraints

The number of people attending our Emergency Departments at both hospitals continues to grow, with many older people being admitted with multiple health conditions.

Emergency care and acute medicine services in both hospitals currently cost more to run than the funding available and make an annual loss of £15million.

The costs of temporary staff in emergency care and acute medicine amounts to over £11million each year.

Our overreliance on temporary staffing costs more and limits our ability to make long-term quality improvements to patient care.

Not delivering the right quality of care, at the right time and in the right place means the potential for errors increases which only adds to the financial burden.



Key challenges cont'd

5 Quality improvements needed

There is too much unacceptable variation between our hospitals on performance against many clinical standards that are the markers of high quality care.

We are unable to consistently ensure that all emergency patients are reviewed by a consultant in a timely manner.


We do not have consistent availability of senior clinical decision makers seven days a week or wrap around support services available.

Some planned care, for example, going into hospital for an operation or x-ray, is not as efficient as it could be.

There are differences between our hospitals in how often people are referred to specialists and the tests and treatments they receive.

Individually our populations are small, but together we can:

- create the vital critical mass of patients so that specialist teams can maintain and develop their skills
- improve staff retention and increase recruitment as jobs become more attractive
- increase the ability to provide more services locally that traditionally residents have had to travel outside the local area to access previously

A group of four healthcare professionals, three women and one man, are smiling and posing in an operating room. They are wearing blue scrubs and blue hairnets. The background shows surgical lights and medical equipment. A large blue banner with white text is overlaid on the image.

**How do we plan to address
these key challenges?**



How do we plan to address these key challenges?

Our work on Phase Two of the Path to Excellence programme covers four broad work streams which are looking at the challenges being faced and thinking about potential solutions for the future:



Emergency care and acute medicine

This is the care we provide when patients arrive at our Emergency Departments or need emergency admission to hospital



Emergency surgery

This is the care we provide for patients who are admitted as an emergency and require an immediate operation



Planned care (including surgery and outpatients)

This is the care we provide after patients have been referred by their GP for a test, scan, treatment or operation

In addition to these areas, we are also thinking about how we improve and develop our various clinical support services across both hospitals such as therapy services (for example physiotherapy, occupational therapy, speech and language therapy), as well as clinical pharmacy and radiology services.



What happens next?

What happens next?

Clinical design teams continue to work with frontline hospital staff to think about how to solve the challenges and better organise services

Autumn/Winter 2018

Further staff and public engagement

November 2018

Key stakeholder events and staff engagement to set evaluation criteria for any future possible solutions

December 2018

Public listening panel – an opportunity for wider stakeholders to apply to present their evidence and any views on the draft case for change and things for the NHS to consider

Early 2019

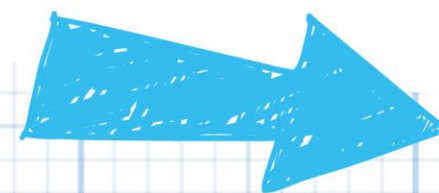
Key stakeholder events and staff engagement to apply evaluation criteria to wide range of future possible solutions

Share ideas on future possible solutions and gain feedback to influence final options the CCGs will consider for formal public consultation

Summer 2019

Formal public consultation

Questions and issues about the case for change



Share
your views!



Website: www.pathtoexcellence.org.uk



Email us: nhs.excellence@nhs.net



Call us on: 0191 217 2670



facebook.com/nhsexcellence



[@nhsexcellence](https://twitter.com/nhsexcellence)



Write to us (no stamp required):

Freepost RTUS-LYHZ-BRLE
North of England Commissioning Support
Riverside House
Goldcrest Way
NEWCASTLE UPON TYNE
NE15 8NY



15th November 2018**REPORT OF THE CHAIR OF THE PLACE BOARD****Place Board Progress Report****1 Purpose of Report**

- 1.1 To provide an update of progress against the current year's (2018/19) Place Board Work Plan.

2. Background

- 2.1 Earlier this year the priorities associated with Place were referred to the North Place Board to action on behalf of the Area Committee. The Place Board has started to initiate action on those priorities and **Annex 1** outlines progress to date.

3. Area Governance Arrangements

- 3.1 The Area Committees are part of the Council's Executive Function and have two key roles:-
- Influencing decisions on services delivered at a local level; and
 - Identification of key priorities for their areas, in the context of supporting the delivery of the Council's Corporate Outcomes Framework at a local level and ensures maximum impact where necessary through utilising its own resources.
- 3.2 Area Place and People Boards were set up to support the Area Committee in identifying areas of priority and ensure action in line with those priorities.
- 3.3 Each ward has one elected member representative, whose role it is to liaise with their ward colleagues in between meetings and feedback collective views into the Board meetings. It should be noted that the Board is not a decision making body and the work/recommendations of the Board will be presented to the Area Committees for final endorsement. Elected member representation on the Place Board for this Area Committee is as follows:-

Ward	Place Board Membership
Chair	Cllr. S. Foster
Castle	Cllr D. MacKnight
Redhill	Cllr R. Bell
Southwick	Cllr A. Samuels
Fulwell	Cllr M. Beck
St. Peter's	Cllr. J. Jackson

4. Key Areas of Influence/Achievements up to 31st October 2018

- 4.1 Outlined below is a summary of the key areas of influence / achievements of the North Place Board up to **31st October 2018**

Action Taken	Outcome
Local priority: Environment & Green Space	
	<ul style="list-style-type: none"> SIB funded 4 x 4g mini dome system and masts is installed and operational September Place Board considered a Report from Local Services & Emergency Planning and Security Services on details of a CCTV project for combatting environmental crime through the North Area

Local priority: Heritage	
	<ul style="list-style-type: none"> • Battle Reenactment event successfully delivered 26th & 27th August 2018 with over 1,500 counted through on the 26th and over 6000 counted through on 27th August. • Southwick Community Christmas Switch On to be held 30th November 2018 • Members continue to receive feedback from the Hylton Castle Steering Group on the restoration of the Castle. A change to the SIB funded project is detailed in Item 3 Annex 1 and within the Finance Report Item 6 Section 2.3 • Fulwell Mill Sails and external lighting are installed
Influencing role	
Place Management	<ul style="list-style-type: none"> • July Place Board received the local services performance update. • September Place Board received a verbal update on enforcement powers and actions within the North with further update to be provided to the December Board.
Highways Maintenance Programme	<ul style="list-style-type: none"> • October 2018 Members received a request from Highways to highlight areas for consideration for inclusion in 2019 – 2020 programme

5. Recommendations

- 5.1 Members are requested to consider the progress and performance update with regards to the North Place Board Work Plan for 2018/2019 as detailed in **Annex 1**

Contact Officer: Vivienne Metcalfe, Area Community Development Lead (North).
 Tel: 0191 561 4577
 Email: vivienne.metcalfe@sunderland.gov.uk

Item 3 Annex 1

North Sunderland Area Committee Work Plan 2018 – 2019

Place

Actions 2017/18			Due for Completion/ Implementation
1	Environment and Green space	Progress Update	
1.1	<p>Local Services:-</p> <p>a. Area Committee approved North Sunderland's Local Services Area Delivery Plan for 2018/2019.</p> <p>b. Place Board to oversee the development and delivery of the 2018/19 Local Services Area Delivery Plan.</p> <p>c. Discuss key priorities for action in the North Area with Mark Speed, Head of Place Management, to include the potential for a stop and challenge policy for enforcement (this would be city-wide), increased signage referring to fines for dropping litter and dog fouling, Public Protection Order areas, leaflet to shops about their responsibilities and understand relationship with Gentoo specifically in relation to residents keeping gardens in good order.</p>	<ul style="list-style-type: none"> • Place Management – Local Services • July Place Board received the local services performance update, members were provided with maps showing local service events across the North locality breaking down the number of contacts by ward for each of the events and showing the comparison to the Sunderland average between November 2017 and May 2018. • CCTV Update • September Place Board considered a Report from Local Services & Emergency Planning and Security Services on details of a CCTV project for combatting environmental crime through the North Area • The report included two proposals: <ul style="list-style-type: none"> • Two Year CCTV Project with Environmental Enforcement Officer, CCTV Deployment Officer and purchase of CCTV units and cameras • One Year project providing an Environmental Enforcement Officer only • Members requested further information on specification of the cameras and the potential to consider a pilot project. 	<p>a. 05.03.18</p> <p>b. 2018/19</p> <p>c. 2018/19</p>
1.2	<p>Continue to identify priorities for Highways Maintenance Programme:</p> <p>a. Discuss initial options</p> <p>b. Final recommendations agreed</p>	<ul style="list-style-type: none"> • October 2018 members received a request from Highways to highlight areas for consideration for inclusion in 2019 – 2020 programme. 	<p>a. November 2018</p> <p>b. March 2019</p>
1.3	<p>Savoy Bingo Hall. Officers in Planning and Property and Compliance to keep members up to date on action as a result of the S215 notice to clear the site.</p>	<ul style="list-style-type: none"> • Sunderland City Council have successfully prosecuted the owners of the Savoy site. 	<p>2018/2019</p>

		<ul style="list-style-type: none"> The owners are awaiting progression of insurance claim. Compliance Team providing updates to the Ward Councillors . 	
1.4	Continue to support and receive updates from the Sea Road and Fulwell Traders Association (£13,555 SIB previously approved to support the development of this group).	<ul style="list-style-type: none"> Sea Road and Fulwell Traders are working together with Fulwell Community Library and Friends of Fulwell to deliver a Christmas Tree, lights and switch on event in 2018. 	2018/2019
1.5	Maintain links to Seafront Developments. Receive updates on the further developments at Roker and Seaburn to consider possibilities for North Area Committee to influence/enhance and continue to receive updates on Traffic measures and Enforcement	<ul style="list-style-type: none"> Signage installed at northern end of Marine Walk to restrict traffic to authorised vehicles only, to be monitored over the summer period and network management to consider the results of the monitoring and provide feedback to members on next steps. Network management have met with Property Services colleagues to discuss the effectiveness of the signage and are developing proposals for further deterrents which will be presented to future board meeting. 	On-going
1.6	4 x 4g mini dome system and masts installed and operational (£30,000 SIB approved on 13.11.17)	<ul style="list-style-type: none"> The cameras are in the following locations after discussions with place management, Northumbria police and feedback from ward councillors: <ul style="list-style-type: none"> Beaumont Street Witherwack Shops Kingsway – Downhill Skate Park Roker Avenue Feedback includes the camera footage has been used to address a number of ASB issues, support for vulnerable people, road traffic accidents. 	2018/2019
2	Heritage	Progress Update	Due for Completion/ Implementation
2.1	Battle re-enactment to take place at Hylton Castle (£26,000 SIB approved 20.10.14 further £10,000 approved 6.10.15)	<ul style="list-style-type: none"> Sunderland North Community Business Centre - Battle Re-enactment event successfully delivered 26th & 27th August 2018 with over 1,500 counted through on the 26th and over 6000 counted through on 27th August. The event was well publicised across local media, Air Show and Tall Ships events, within council media 	25 th – 26 th August 2018

		<p>channels on social media, local community venues, schools and commercial venues and banners across key sites within the City.</p> <ul style="list-style-type: none"> • Press articles were within the Newcastle Journal and the Sunderland Echo, interviews carried out on BBC Radio Newcastle and Spark FM to promote the event and during the event – acknowledgement of Area Committee funding was evidenced throughout all promotion. • Activities at the Castle site included the battle re-enactment, marquee with activities for families, fairground and a living history site all of which received excellent feedback. • The English Civil War Society provided 12 horses and horsemen along with over 300 re-enactment volunteers who provided excellent English Civil War displays through the day including – cavalry, infantry, artillery and the Battle for Sunderland. • The re-enactors camped at Fulwell Quarry and they were very happy with the location of the site, enjoyed taking part in the event and are keen to return in the future. 	
2.2	Southwick Community Christmas to be held 2018.	<ul style="list-style-type: none"> • 2018 Switch on planned for 30th November 2018, 4.00pm at Southwick Green. 	Completion 2017
2.3	Members continue to be involved and receive feedback from the Hylton Castle Steering Group during the restoration project of Hylton Castle (£40,000 SIB approved 05.10.16 to support development of café etc.)	<ul style="list-style-type: none"> • The Hylton Castle project have requested a change to the SIB funded project as follows :- • SIB funded project included £9,000 for a physical castle model and plinth to be installed – this model is not now being commissioned as space is at a premium throughout the building and permanently devoting space to a model and plinth reduces flexibility and usability. Therefore it is proposed interpretation will be delivered on film, via fixed interpretation/ projectors, artistic designed glass installation, self-guided trails and a heritage app. • SIB change to project and costs relating to the café element of the project included in the Finance Report Item 6 Section 2.3 and Annex 2 	2018/2019

2.4	To support and receive updates on the redevelopment of Fulwell Mill including the Fulwell Mill Sail project (£60,000 SIB approved 06.06.16)	<ul style="list-style-type: none"> • Sails were installed early summer and provided the transformation of the structure for local residents and visitors. • In addition to the sails external lighting is installed and these are sequenced to co-ordinate with the colour changes set by Sunderland City Council for other historical buildings across the City and to dovetail with specific City campaigns. • Final snagging works need to take place with the Millwright/main contractor towards the end of October and this will then enable the handover of the building to Sunderland North Community Business Centre, signifying the start of the new leasing arrangements. • Monthly maintenance continues to take place led by Sunderland City Council with support from volunteers recruited by Sunderland North Community Business Centre. • Some child and family activities will be delivered up to Christmas and the site will also be launched through a series of local awareness raising activities early 2019. 	2018/2019
2.5	Arrange visit to key development sites in the North	<ul style="list-style-type: none"> • The North Area Tour on 12th October visited key sites within the North which have benefitted from North Area Committee SIB funding either as a community hub or through the Raising Aspirations Projects. 	July 2018

REPORT OF THE CHAIR OF THE PEOPLE BOARD

15th November 2018

People Board Progress Report

1 Purpose of Report

- 1.1 To provide an update of progress against the current year's (2018/19) People Board Work Plan.

2. Background

- 2.1 Earlier this year the priorities associated with People were referred to the North People Board to action on behalf of the Area Committee. The People Board has started to initiate action on those priorities and **Annex 1** outlines progress to date.

3. Area Governance Arrangements

- 3.1 The Area Committees are part of the Council's Executive Function and have two key roles:-
- Influencing decisions on services delivered at a local level; and
 - Identification of key priorities for their areas, in the context of supporting the delivery of the Council's Corporate Outcomes Framework at a local level and ensures maximum impact where necessary through utilising its own resources.
- 3.2 Area Place and People Boards were set up to support the Area Committee in identifying areas of priority and ensure action in line with those priorities.
- 3.3 Each ward has one elected member representative, whose role it is to liaise with their ward colleagues in between meetings and feedback collective views into the Board meetings. It should be noted that the Board is not a decision making body and the work /recommendations of the Board will be presented to the Area Committees for final endorsement. Elected member representation on the People Board for this Area Committee is as follows:-

Ward	People Board Membership
Chair	Cllr R. Davison
Castle	Cllr. S. Foster
Redhill	Cllr P. Stewart
Southwick	Cllr M. Elliott
Fulwell	Cllr B. Francis
St. Peter's	Cllr B. Curran

4. Key Areas of Influence/Achievements up to 31st October 2018

- 4.1 Outlined below is a summary of the key areas of influence / achievements of the North People Board up to 31st October 2018.

Action Taken	Outcome
Local priority: Health and Well Being	
	<ul style="list-style-type: none"> July Board received an update on the football hub at Downhill Sports Complex. September Board received an update on the services and activities delivered by the North Voluntary and Community Sector organisations in relation to Mental Health and Autism Support. September Board considered a report on the city provision to support the reduction in child obesity.

	<ul style="list-style-type: none"> September Board considered a report on the city provision to improve oral health in children.
Local priority: Activities for Young People	
	<ul style="list-style-type: none"> SIB funded Summer 2018 School Holiday Programme successfully delivered by the following partners who also continue to deliver the SIB funded Ward Delivery of Youth Activities: <ul style="list-style-type: none"> NE Sport Southwick Neighbourhood Youth Project (SNYP) Sunderland North Community Business Centre (SNCBC) IAM Sports Sunderland Community Action Group (SCAG)
Local priority: Job Prospects and Skills	
	<ul style="list-style-type: none"> June Area Committee awarded SIB match funding for the following Community Led Local Development (CLLD) projects subject to successfully securing CLLD funding <ul style="list-style-type: none"> Wellbeing Works – Grace House & HOPs REACT Project – SNCBC Skilled Up – Hylton Castle Project
Local priority: VCS Capacity Building	
	<ul style="list-style-type: none"> June Area Committee aligned funding to the Self Supporting Community Associations subject to proposals to be considered by the July People Board July People Board considered the proposals and a responsive decision was made in August 2018 by Area Committee members for the following organisations towards the delivery of services and activities in the North: <ul style="list-style-type: none"> Castletown Community Association Redby Community Association Thompson Park Community Association Redhouse Community Association June Area Committee approved SIB funding to Redhouse Community Association for a refurbishment project June Area Committee approved SIB funding to Southwick Community Association for a refurbishment project
Influencing Role	
Community Led Local Development (CLLD)	<ul style="list-style-type: none"> Cllr Davison continues to represent North Area Committee on the CLLD Local Action Group. North Area Committee has approved SIB for 3 projects as match to CLLD applications (see Job Prospects and Skills section above).
Pupil Place Planning	<ul style="list-style-type: none"> September Board considered the Pupil Place Planning Statement for the North Area

5. Recommendations

- 5.1 Members are requested to consider the progress and performance update with regards to the North People Board Work Plan for 2018/2019 as detailed in **Annex 1**

Contact Officer: Vivienne Metcalfe, Area Community Development Lead (North). Tel: 0191 561 4577
Email: vivienne.metcalfe@sunderland.gov.uk

Item 4 Annex 1

North Sunderland Area Committee Work Plan 2018 – 2019

People

Actions 2017/18			Due for Completion/ Implementation
1	Health and Wellbeing	Progress Update	
1.1	Members to be kept up to date on the possibility of a football hub in the North	<ul style="list-style-type: none"> July Board received an update on the work round the creation of a football hub at Downhill Sports Complex. It is anticipated that 4 – 6 partners' clubs will be involved at the Hub and the Russell Foster League is the main partner, 3g and grass pitches will be available. 	2018/19
1.2	Mental Health Provision in the North - understand what provision is currently delivered in the North, activities or events delivered through local VCS organisations that help resolve potential Mental Health issues and consider if there is anything further that could be delivered.	<ul style="list-style-type: none"> September Board received an update on the services and activities delivered by the North Voluntary and Community Sector organisations in relation to Mental Health and Autism Support. Initial findings identified numerous services and activities available however there is a need to promote the provision in addition gaps identified with support to families and community cohesion. Members were provided with the information in order to share and signpost local communities. Members to consider the potential for a future funding call to address the gaps identified. 	2018/19
1.3	Dementia Friendly Areas- look at what is already happening in the area to make it Dementia Friendly and consider any possibility for Area Committee to support/add value to this.	<ul style="list-style-type: none"> To be considered at a future board. 	2018/19
1.4	Childhood Obesity – look at what is already being delivered to support the reduction in childhood obesity and consider any possibility for Area Committee to support/add value to this.	<ul style="list-style-type: none"> September Board considered a report on the City provision to support the reduction in childhood obesity. Members agreed to retain a watching brief on how the provision is delivered and receive City performance updates, receive an update on the policy in relation to hot food takeaways once approved by Cabinet and Council, encourage primary schools within their roles as governors to sign up to the Change4Life programme, enrol in the Daily Mile, continue to fund local small scale initiatives through SIB or Community Chest such as activities during school holidays that include a health meal and/or advice on how to make healthy meals. 	2018/19

1.5	Childhood Oral Health - look at what is already being delivered to improve oral health in children and consider any possibility for Area Committee to support/add value to this.	<ul style="list-style-type: none"> September Board considered a report on the City provision to improve oral health in children Members agreed to retain a watching brief on how the provision is delivered and receive City performance updates 	2018/19
1.6	Autism Support – look at what is already being delivered in the area to support people with autism and consider any possibility for Area Committee to support/add value to this e.g. training for all North Area Committee Members to have a greater understanding.	<ul style="list-style-type: none"> Included within Section 1.2 	2018/19
2	Activities for Young People (linked to Health and Wellbeing)	Progress Update	Due for Completion/ Implementation
2.1	Develop a 2018 Programme of Summer Holiday activities through the Raising Aspirations Project Leads developing and delivering programmes across the area, including Beach Camp and Ward based activities which also address holiday hunger (Area Committee to be asked to consider approving £35,000 - £28,020 from the Youth Activities funding available to Area Committee in this year and the balance of £6,980 from SIB)	<p>7th June, 2018 Area Committee approved funding for the delivery of a School Holiday Programme by the following partners</p> <ul style="list-style-type: none"> NE Sport Southwick Neighbourhood Youth Project (SNYP) Sunderland North Community Business Centre (SNCBC) IAM Sports Sunderland Community Action Group (SCAG) <p>Monitoring & Evaluation:</p> <p>Beach Camp – NE Sport:</p> <ul style="list-style-type: none"> The numbers attending were fantastic. The booking worked well we had 870 places and the lot were fully booked, every single day was booked full before we even started the summer. In previous years we had a lot cancel on the day but this year we really got on top of it and any places that were cancelled were quickly taken back up. Although we had 30 spaces a day often we would have between 32-34 a day, this is where siblings would come along wanting to join in. We did have to employ additional sessional staff on occasions to deal with the sheer numbers and always had someone on standby for a phone call. The Partnership work with SNCBC and SNYP, absolutely fantastic, lovely to see people mixing from different parts of the City, everything went really well with lots of cross partner promotion. 	2018/19

		<ul style="list-style-type: none"> • The feedback, as always absolutely fantastic, people really love beach camp and if we were to even advertise now we probably would be able to fill places for next year. • We met some fantastic young people who took a lead in the sessions, as young volunteers these young people were fantastic and we continue to work with them today. • Litter picks were really successful and the beaches have never looked so good, young people really took ownership of the environment. • The weather was amazing and this got the young people outdoors the good weather enabled us to put on a variety of activities everyday including sport in the park, rockpooling, walks and art. • The promotion of Sunderland City Council North Area Committee, banner on the pod and a pinned post on Facebook stating funded by. Also the sharing of information across pages worked well. We are always reminding people where the funding comes from and display a photo on our website. • The football sessions based at Monkwearmouth were boosted on the back of the success of the camps at summer and numbers swelled. • The party went really well with SNCBC some great feedback from that as well. <p>Southwick Ward - SNYP:</p> <ul style="list-style-type: none"> • This year the children and young people of Southwick had access to free activities and a meal each weekday during the school summer holidays at SNYP. We attracted a core group of young people to each session based on their interests. Having a wide variety of activities meant that all the young people could participate in activities they enjoyed with their friends. • The holiday hunger was addressed each weekday and the young people had lunch as well as fruit they could snack on as and when they wanted, there was never any waste and we worked with The Flower Mill where they young people harvested vegetables that they used during their lunch meals at SNYP or took home with them at the end of the week. • We were also lucky to have a volunteer with us from Eden Southwick, the young people enjoyed having an extra staff member around especially as he is experienced in, and enjoys, sports activities. • Once again we made use of green spaces that are free – cutting down on admission costs we would have incurred usually – Thompson Park and the beach were used each week, showing the young people that they can make use of the natural resources in their communities to have fun and enjoy a variety of activities. 	
--	--	---------------------------------------------------------------------------------------------------------------------------------------------------------------------------------------------------------------------------------------------------------------------------------------------------------------------------------------------------------------------------------------------------------------------------------------------------------------------------------------------------------------------------------------------------------------------------------------------------------------------------------------------------------------------------------------------------------------------------------------------------------------------------------------------------------------------------------------------------------------------------------------------------------------------------------------------------------------------------------------------------------------------------------------------------------------------------------------------------------------------------------------------------------------------------------------------------------------------------------------------------------------------------------------------------------------------------------------------------------------------------------------------------------------------------------------------------------------------------------------------------------------------------------------------------------------------------------------------------------------------------------------------------------------------------------------------------------------------------------------------------------------------------------------------------------------------------------------------------------------------------------------------------------------------------------------------------------------------------------------------------------------------------------------------------------------------------------------------------------------------------------------------------------------------------------------------------------------------------------------------------------------------------------------------------------------------------------------------------------------------------------------------------------------------------------------------------------------------------------------------------------------------------------------------------------------------------------------------------------------------------------------------------------------------------------------------------------	--

		<ul style="list-style-type: none"> • The sessions with the social chef were popular and the young people look forward to them. They enjoyed planning their own meal ideas and being creative with food. • The sessions at The Flower Mill were new – we had young people who were interested in gardening – the staff at The Flower Mill were very accommodating and the young people had the opportunity to try new experiences including bee keeping, planting and building scarecrows – we hope to continue this work/partnership during future school holidays. • In total there were 248 attendances over the period of the provision, averaging just over 15 young people per session. <p>Castle Ward - SNCBC:</p> <ul style="list-style-type: none"> • Sunderland North Community Business Centre were awarded the funding for Castle Raising Aspirations Summer 2018. A community audit was carried out, and it was identified that both junior and senior provision would be carried out from a number of venues in the Castle Ward, Sunderland North. Venues identified included Castletown Community Centre, Billy Hardy Centre, Hylton Castle Primary School, Hylton Castle Park and Winchester House. This allowed the delivery to take place across the Castle ward and ensured that the area was well covered with sessions within walking distance for all children, young people and their families. • It was agreed at the initial meetings with Raising Aspirations partners that SNCBC would set up Sunderland North Raising Aspirations Youth & Play Face Book pages for all partners to post details of activities and sessions and this was established prior to the holidays. Daily updates were posted on Sunderland North Raising Aspirations Youth & Play Face Book pages over the duration of the school summer holidays and also prior to sessions commencing. Sessions were also promoted through local schools and community venues. • Castletown Community Centre Play - 16 individual children attended Castletown Community Centre with 13 of them attending four or more sessions. Children had access to a variety of play activities including games console, arts and crafts, tablets, messy play, DVD, outdoor play, cooking activities and board games. The most popular activities over the sessions were playing football, cooking, playing in the garden and slime. • Beach School Play - 24 individual children have attended Beach School sessions which took place in partnership with North East Sport with 9 of them attending four or more sessions. Places were limited due to mini bus places however all places were allocated each week. Children were 	
--	--	------------------------------------------------------------------------------------------------------------------------------------------------------------------------------------------------------------------------------------------------------------------------------------------------------------------------------------------------------------------------------------------------------------------------------------------------------------------------------------------------------------------------------------------------------------------------------------------------------------------------------------------------------------------------------------------------------------------------------------------------------------------------------------------------------------------------------------------------------------------------------------------------------------------------------------------------------------------------------------------------------------------------------------------------------------------------------------------------------------------------------------------------------------------------------------------------------------------------------------------------------------------------------------------------------------------------------------------------------------------------------------------------------------------------------------------------------------------------------------------------------------------------------------------------------------------------------------------------------------------------------------------------------------------------------------------------------------------------------------------------------------------------------------------------------------------------------------------------------------------------------------------------------------------------------------------------------------------------------------------------------------------------------------------------------------------------------------------------------------------------------------------------------------------------------------------------------------------------------------------------------------------------------------------------------------------------------------------------------------------------------------------------------------------------------------------------------------------------------------------------------------------------------------------------------------------------------------------------------------------------------------------------------------------------------------------------------------------------------------------------------------------------------------------------------------------------------------------	--

		<p>collected at 9.30am from Hylton Castle Primary School using the SNCBC mini bus and were taken to Roker where they joined in with the activities and children attending the NE Sports Beach School sessions. Two staff from SNCBC supported the children within the sessions. Children were returned to the primary school at 3.30pm. All Children brought a packed lunch to the sessions. This provided the children with an opportunity to interact with other children and make new friends and try new activities in a safe environment and away from a traditional play session. Children had access to a variety of outdoor activities including arts and crafts, pond dipping, beach games, den building, rock pooling etc. The most popular activities during the sessions were playing football, pond dipping and playing in the sand.</p> <ul style="list-style-type: none"> • Forest School/Town End Farm Play - Sessions took place every Friday from 12noon – 2pm. Sessions were scheduled to take place at Hylton Castle Primary School for the first 4 weeks and then to transfer to Winchester House for the final 2 weeks however, due to weather/ground conditions sessions were transferred twice to Winchester House in the 4 week period for health and safety reasons therefore, 2 sessions delivered at the school and 4 at Winchester House. 31 individual children attended Forest School with 19 of them attending four or more sessions. Within the Forest School sessions children enjoyed being mini-explorers and undertaking treasure/bug hunts. They enjoyed learning about nature and eating outdoors. Their favourite game was playing hide and seek and they found some great hiding spots! Within the sessions at Winchester House, children had access to a variety of play activities including games console, arts and crafts, tablets, messy play, DVD, outdoor play, cooking activities and board games. The most popular activities over the sessions were playing pool/table tennis, cooking and making slime. Packed lunches for the children were provided at all sessions. • Town End Farm Youth Club Youth - 48 individual young people aged between 11 and 19 years attended Town End Farm Youth Club Summer 2018 sessions, with 24 of them attending four or more sessions. Young people had access to a range of activities including games console, arts and crafts, tablets, TV/DVD, outdoor sport, cooking activities and board games. The most popular activities over the sessions were cooking, kwik cricket and games consoles. • Billy Hardy Centre – Youth - 25 individual young people aged between 11 and 19 years have attended Billy Hardy Centre Youth Summer 2018 sessions, with 16 of them attending four or more sessions. Young people 	
--	--	---------------------------------------------------------------------------------------------------------------------------------------------------------------------------------------------------------------------------------------------------------------------------------------------------------------------------------------------------------------------------------------------------------------------------------------------------------------------------------------------------------------------------------------------------------------------------------------------------------------------------------------------------------------------------------------------------------------------------------------------------------------------------------------------------------------------------------------------------------------------------------------------------------------------------------------------------------------------------------------------------------------------------------------------------------------------------------------------------------------------------------------------------------------------------------------------------------------------------------------------------------------------------------------------------------------------------------------------------------------------------------------------------------------------------------------------------------------------------------------------------------------------------------------------------------------------------------------------------------------------------------------------------------------------------------------------------------------------------------------------------------------------------------------------------------------------------------------------------------------------------------------------------------------------------------------------------------------------------------------------------------------------------------------------------------------------------------------------------------------------------------------------------------------------------------------------------------------------------------------------------------------------------------------------------------------------------------------------------------------------------------------------------------------------------------------------------------------------------------------------------------------------------------------------------------------------------------------------------------------------------------------------------------------------------------------------------------------------------------------------------------------------------------------------------------------------------------------------------------------------------	--

		<p>had access to a range of sports activities including kwik cricket, football, rounder's etc. The most popular activity over the sessions were kwik cricket. Some sessions were quiet, so staff went to Hylton Castle Park and engaged with young people in that facility to ensure value for money.</p> <ul style="list-style-type: none"> • Party In The Park - Hylton Castle took place on Friday 24th August 2018 between 5pm and 8pm. The session was promoted on Sunderland North Community Business Centre – Youth and Play, Castle Raising Aspirations and Sunderland North Raising Aspirations Youth & Play Face Book pages and through the Raising Aspirations and SNCBC Youth and Play sessions in the Castle Ward. A total of 184 children and young people attended the event. A range of activities were available on the day including Sunderland Climbing Wall, arts and crafts, jewellery making, football, sports activities etc. All children and young people were issued with a voucher which entitled them to £4 to spend at the food and drink outlet provided by O'Briens Catering and Funfairs. The English Civil War Society made a visit to promote the Battle For Sunderland. <p>Redhill Ward – IAM Sports:</p> <ul style="list-style-type: none"> • Activities carried out included a range of physical activities such as football, dodgeball, kick dodge etc. and traditional games such as tig, corners, bulldog amongst many others. We also showed movies when the children were eating their hot snacks and fruit and had a PlayStation 4 and games such as pool and darts, where one of our young sports leaders taught children darts as he plays for a team. • The activities took place at Red House Academy, Red House Community Centre, Red House playing fields, green space used wherever possible. We also used Southwick Primary school and playing fields for 3 sessions due to closure of venue in Red House, we discussed this beforehand with SNYP to make sure there was no clash or duplication in activities and people came from Redhill for these sessions. • The holiday hunger and providing food for children attending our activities proved to be very popular with both children and parents/guardians. We received greatly positive feedback on this aspect, a lot of parents pointing out that it was very helpful knowing their children not only received something hot to eat, but also fruit and physical activity, and it helped them keep their costs lower, especially over the holiday period and with money already tight. It took some of the strain off them having to cover the extra costs for meals and activities. • The beach visits were very popular in our ward. As we have found and 	
--	--	----------------------------------------------------------------------------------------------------------------------------------------------------------------------------------------------------------------------------------------------------------------------------------------------------------------------------------------------------------------------------------------------------------------------------------------------------------------------------------------------------------------------------------------------------------------------------------------------------------------------------------------------------------------------------------------------------------------------------------------------------------------------------------------------------------------------------------------------------------------------------------------------------------------------------------------------------------------------------------------------------------------------------------------------------------------------------------------------------------------------------------------------------------------------------------------------------------------------------------------------------------------------------------------------------------------------------------------------------------------------------------------------------------------------------------------------------------------------------------------------------------------------------------------------------------------------------------------------------------------------------------------------------------------------------------------------------------------------------------------------------------------------------------------------------------------------------------------------------------------------------------------------------------------------------------------------------------------------------------------------------------------------------------------------------------------------------------------------------------------------------------------------------------------------------------------------------------------------------------------------------------------------------------------------------------------------------------------------------------------------------------------------------------------------------------------------------------------------------------------------------------------------------------------------------------------------------------------------------------------------------------------------------------------------------------------------------------------------------------------------------------------------------------------------------------------------------------------------------------------------	--

		<p>reported previously, a lot of children in our ward have never even been to the beach. From this, we approached Willowfields Primary, a school which has struggled and is in an area of high deprivation, and offer out to their children and parents the weekly trips to the beach. We had great response from this and our mini bus, provided in partnership from SMCT, was full each week.</p> <ul style="list-style-type: none"> • In total there were 482 attendances over the period of the provision, averaging just over 20 young people per session <p>St. Peters Ward - SCAG:</p> <ul style="list-style-type: none"> • Working in collaboration with Dame Dorothy School: making initial contact and engaging with families to advertise the provision was a success. Continued use of Facebook via Dame Dorothy, S.C.A.G's own page plus Sunderland North raising aspirations youth and play also boosted attendance and advertised funding from Sunderland City Council. • Packed lunches and additional snacks enabled young people to eat together creating greater community cohesion. • The facilities on offer enabled the program to deliver a range of activities that met the needs of the young people (even with building work taking place) the site was a great venue that allowed the staff team to be flexible when it came to the delivery of the program. • We underestimated the need within the ward for this provision and therefore were oversubscribed. Several families from other areas from within the North also requested information and expressed interest in their children attending. • Due to the recent increase in serious crime within the local area many parents/carers have refused to allow their children to play with their peers outside unsupervised. The provision that S.C.A.G provided in the holidays enabled children to gain access to free play in a safe and nurturing environment. Parents were very keen to access this provision as their children were not able to mix with other children unless in supervised or organised paid for activities which were costly, most of the parents couldn't afford. • Parents were astonished that. S.C.A.G we were able to provide the delivery for free. Parents said that this factor had helped their financial situation, providing a buffer which enabled them to afford everyday items which they thought that their children would have to go without or must borrow from family members to provide for their children in the holidays. • Free provision enabled parents to have respite or provided a safe 	
--	--	--------------------------------------------------------------------------------------------------------------------------------------------------------------------------------------------------------------------------------------------------------------------------------------------------------------------------------------------------------------------------------------------------------------------------------------------------------------------------------------------------------------------------------------------------------------------------------------------------------------------------------------------------------------------------------------------------------------------------------------------------------------------------------------------------------------------------------------------------------------------------------------------------------------------------------------------------------------------------------------------------------------------------------------------------------------------------------------------------------------------------------------------------------------------------------------------------------------------------------------------------------------------------------------------------------------------------------------------------------------------------------------------------------------------------------------------------------------------------------------------------------------------------------------------------------------------------------------------------------------------------------------------------------------------------------------------------------------------------------------------------------------------------------------------------------------------------------------------------------------------------------------------------------------------------------------------------------------------------------------------------------------------------------------------------------------------------------------------------------------------------------------------------------------------------------------------------------------------------------------------------------------------------------------------------------------------------------------------------------------------------------------------------------------------------------------------------------------------------------------------------------------------------------------------------------------------------------------------------------------------------------------------------------------------------------------------------------------------------------	--

		<p>environment where they knew their children would be safe when they went to work.</p> <ul style="list-style-type: none"> • Many single parent families said that they had been worried since last summer how they were going to manage the care of their children in the summer holidays as they had no family or extended support network that would be able to look after their children when they were at work. They discussed how some of their friends had paid for similar provision and said that they would not have been able to afford this however as they had no alternative, it would have put them in financial hardship and caused great worry as Christmas wasn't far away and they were very concerned how they were going to pay for both. • Young people would often come into the session without eating breakfast, the children felt comfortable with the team to let them know they were hungry and that we would provide free snacks and lunch. Parents were also appreciative of this service as it supported them financially but also encouraged young people to try new foods. • Children loved the range of activities especially slime making, print making and kite flying. We aimed to deliver a program that was hands on encouraging young people to explore and can experience new and exciting challenges. We offered young people the opportunity of free play which supported community cohesion and enabled young people to develop personal and social skills in a safe and nurturing environment. • Parents had been concerned that over the holidays their children would not have the chance to mix with their peers. Our provision provided the opportunity. Happy children, happy families. • In total there were 616 attendances over the period of the provision, averaging just over 21 young people per session <p>Fulwell Ward IAM Sports:</p> <ul style="list-style-type: none"> • The project was based at Fulwell Methodist Church and activities carried out included a range of physical activities such as football, dodgeball, kick dodge etc. and traditional games such as tig, corners, bulldog, farmer, farmer amongst others. We also showed movies when the children were eating their hot snacks and fruit and we created some of our own sports such as nerf ball and alphaball. • The holiday hunger and providing food for children attending our activities proved to be very popular with both children and parents/guardians. We received greatly positive feedback on this aspect, a lot of parents pointing out that it was very helpful knowing their children not only received 	
--	--	-----------------------------------------------------------------------------------------------------------------------------------------------------------------------------------------------------------------------------------------------------------------------------------------------------------------------------------------------------------------------------------------------------------------------------------------------------------------------------------------------------------------------------------------------------------------------------------------------------------------------------------------------------------------------------------------------------------------------------------------------------------------------------------------------------------------------------------------------------------------------------------------------------------------------------------------------------------------------------------------------------------------------------------------------------------------------------------------------------------------------------------------------------------------------------------------------------------------------------------------------------------------------------------------------------------------------------------------------------------------------------------------------------------------------------------------------------------------------------------------------------------------------------------------------------------------------------------------------------------------------------------------------------------------------------------------------------------------------------------------------------------------------------------------------------------------------------------------------------------------------------------------------------------------------------------------------------------------------------------------------------------------------------------------------------------------------------------------------------------------------------------------------------------------------------------------------------------------------------------------------------------------------------------------------------------------------------------------------------------------------------------------------------------------------------------------------------------------------------------------------------------------------------------------------------------------------------------------------------------------------------------------------------------------------------------------------------------------------------------------------------	--

		<p>something hot to eat, but also fruit and physical activity, and it helped them keep their costs lower, especially over the holiday period and with money already tight. It took some of the strain off them having to cover the extra costs for meals and activities.</p> <ul style="list-style-type: none"> In total there were 286 attendances over the period of the provision, averaging just over 20 young people per session. 	
2.2	Relocation of Redhill Play Area (£40k SIB approved Oct 2015 to match to S106 and Community Chest).	<ul style="list-style-type: none"> October 2015 SIB approved to deliver the Redhill Play Area Project to match Redhill Community Chest funding and S106 funding July 2018 People Board considered the Play Area Project Proposals and in April 2018 members agreed the proposals via delegated decision As outlined in the Sunderland's Play and Urban Games (PUG) Position Statement and Delivery Plan 2016/2017 a public consultation has been undertaken with regard to proposals and initial sketch designs for a play area to be located adjacent to Rotherfield Road. The consultation was open in the period 13 July 2018 - 31 August 2018. The following were contacted for their views: IAM Sports; Sunderland North Community Business Centre; Redhouse Community Centre; St Cuthbert's Church; Pickersgill House Care Home; and Residents of properties which directly overlook the proposed site: All but one of the responders welcomed or did not object to the site being developed as a play area and approved the initial sketch designs. Two of the residents expressed concern that the site may experience a large amount of anti-social behaviour. Comments and Suggestions <ol style="list-style-type: none"> Seating and waste receptacles, including dog waste bins, should be included on site. An age limit should be set to exclude teenagers and young adults. Inclusion of a privacy boundary e.g. trees, fencing or embankment One resident was completely opposed to the proposals. Recommendations <ol style="list-style-type: none"> That some seating and waste receptacles are included on site; Display of signage advising on age limits for the defined parts of the play area: To review proposed tree planting with a view to including further trees on the play area boundary Investigate the possibility of installing CCTV cameras with a view to preventing anti-social behaviour. 	2018/19
2.3	Tall Ships Race 2018. Young People from the North supported to take up the opportunity to be a Sail Trainee.	<p>Monitoring and Evaluation:</p> <ul style="list-style-type: none"> The funding output contribution was set at £66,000 across the City and the actual spend totalled £61,258.65 of which £60,000 is being claimed. The 	2018/19

(£22,500 SIB approved 05.06.217 to support up to 15 young people).	<p>reason for the total amount that is being claimed not being equal to the spend target is due to a small percentage of nominated sail trainees disengaging with the programme, where those places could be filled that has occurred. The final sail trainee numbers and costs are shown in the following table:</p> <table><tr><th>AREA</th><th>Sail trainee - output target</th><th>Sail Trainee – input actual</th><th>Spend target £</th><th>Spend actual £</th></tr><tr><td>NORTH</td><td>15</td><td>13</td><td>22,500</td><td>19,500</td></tr><tr><td>WEST</td><td>6</td><td>10</td><td>9,000</td><td>9,000</td></tr><tr><td>EAST</td><td>10</td><td>10</td><td>15,000</td><td>15,000</td></tr><tr><td>COALFIELD</td><td>8</td><td>7</td><td>12,000</td><td>10,500</td></tr><tr><td>WASHINGTON</td><td>5</td><td>4</td><td>7,500</td><td>6,000</td></tr></table> <ul style="list-style-type: none">• The SIB contribution to the Sunderland Sail Training Bursary programme presented the fantastic and unique opportunity for 44 young people from across the city to get involved in the Sunderland Sail Trainee Programme. The programme adopted a two-pronged approach in relation to the sail trainee experience and the intrinsic benefits on them.• Initially the sail trainees enjoyed a six month programme of sail training, personal development and cultural experiences. Throughout the programme they visited cultural venues and learnt about their city, they completed workshops that were aimed at increasing their communication skills and confidence and participated in water based activities to prepare them for their voyages in July 2018. The intention of the programme was to create a group of young city ambassadors that could speak with confidence about their city and the Sunderland ‘offer’ to their peer groups and consequently to their fellow sail trainees on their tall ships and in Esbjerg. The programme was also intended to give the sail trainees the opportunity to socialise together and get to know each other, they also developed a relationship with the Tall Ships Project Team via face to face communications presenting opportunities to discuss any questions that they had. In addition they were part of ‘Team Sunderland’ taking part in the Sunderland Crew Parade and Prize Giving Ceremony and the Crew Party. This was a unique opportunity to take part in the celebrations in their home city, in usual circumstances a sail trainee experience would normally only involve	AREA	Sail trainee - output target	Sail Trainee – input actual	Spend target £	Spend actual £	NORTH	15	13	22,500	19,500	WEST	6	10	9,000	9,000	EAST	10	10	15,000	15,000	COALFIELD	8	7	12,000	10,500	WASHINGTON	5	4	7,500	6,000
AREA	Sail trainee - output target	Sail Trainee – input actual	Spend target £	Spend actual £																											
NORTH	15	13	22,500	19,500																											
WEST	6	10	9,000	9,000																											
EAST	10	10	15,000	15,000																											
COALFIELD	8	7	12,000	10,500																											
WASHINGTON	5	4	7,500	6,000																											

		<p>participation in crew activities in the host port that they have sailed into, which in this case would be Esbjerg. The result is that Sunderland sail trainees have experienced double the fun!</p> <ul style="list-style-type: none"> • Subsequently the sail trainees joined their tall ships on Friday 13th July and embarked on sail training voyages from Sunderland to Esbjerg in The Tall Ships Races 2018, taking part in the spectacular Parade of Sail as they departed from their home city. The sail trainees will quickly have become valued crewmates on-board their ships, actively working as a team to sail the ship and to undertake any tasks that they were presented with including cooking in the galley, daily watch duties, cleaning the decks, navigating and steering their ships, climbing the mast, ship maintenance and welcoming visitors to their ships in Esbjerg. • Sail training is proven academically to develop key life skills, increase self-esteem and confidence and improve a young person's ability to take responsibility, develop team working and leadership skills and to assist them in gaining an understanding of other cultures and backgrounds and these are the outcomes that the Strategic Initiatives Budget contribution has had on the 44 sail trainees. • Message received from a sail trainee on arrival in Denmark - "Morning all arrived in Denmark at 2:30 local time we are 2 hours ahead of you guys and the weather is amazing lovely and sunny , the North Sea was a lot smoother than we all expected but was overall an incredible experience, I brought the boat into Denmark like physically drove it through the channel of Esbjerg and it was surrealllllll, was only sick once which is brill and just about to head the shower now and freshen up a bit then heading to do some shopping and exploring, this is one of the best things I've ever done like it's amazing and the people we are with are so canny" • The funding supported the Sunderland Sail Trainee Bursary Programme to provide the opportunity to undertake a sail training experience on a tall ship to as many young people as possible, from all areas in Sunderland, that may not have otherwise had the opportunity due to personal circumstance. As a result a group of young people have visited cultural venues and learnt about their city, completed workshops that were aimed at increasing their communication skills and confidence and participated in water based activities to prepare them for their voyages. • On their voyages they have developed key life skills, increased their self-esteem, confidence and ability to take responsibility, developed their team working and leadership skills and gained an understanding of other cultures and backgrounds 	
--	--	---------------------------------------------------------------------------------------------------------------------------------------------------------------------------------------------------------------------------------------------------------------------------------------------------------------------------------------------------------------------------------------------------------------------------------------------------------------------------------------------------------------------------------------------------------------------------------------------------------------------------------------------------------------------------------------------------------------------------------------------------------------------------------------------------------------------------------------------------------------------------------------------------------------------------------------------------------------------------------------------------------------------------------------------------------------------------------------------------------------------------------------------------------------------------------------------------------------------------------------------------------------------------------------------------------------------------------------------------------------------------------------------------------------------------------------------------------------------------------------------------------------------------------------------------------------------------------------------------------------------------------------------------------------------------------------------------------------------------------------------------------------------------------------------------------------------------------------------------------------------------------------------------------------------------------------------------------------------------------------------------------------------------------------------------------------------------------------------------------------------------------------------------------------------------------------------------------------------------------------------------------------------------------------------------------------------------------------------------------------------------------------------------------------------------------------------------------------------------------------------------------------------------------------------------------------------------------------------------------------------------------------------------------------------------------------------------------------------------------------------------------------------------------------------------------------------------------------------------------------------------------------------------	--

		<ul style="list-style-type: none"> • The process of sail trainee recruitment and retention worked well with only a small number of sail trainees disengaging from the programme. The programme content worked well at successfully achieving the programme objectives and the Strategic Initiatives Budget contribution was prudently spent to ensure the funds achieved maximum positive impact. • The SIB contribution was referenced in press releases over a seven month period, gaining publicity in regional publications and online. Social media posts distributed by Sunderland Council and The Tall Ships Races Sunderland 2018 highlighted the generous support of the Area Committees on a number of occasions. A launch event for the Sunderland Sail Trainee Programme was held at Sunderland Yacht Club on Saturday 20th January 2018 with attendees including Sunderland Councillors representing their Area Committee – all Area Committees were represented. • Representatives from each Area Committee were invited to an event to meet up with the sail trainees to hear all about their experiences. The event took place on the evening of Wednesday 26th September 2018 between 6pm and 8pm and the support of the Area Committees featured in associated publicity. 	
2.4	Tall Ships Race 2018. VCS organisations from the North area supported to take up the opportunity of being involved in the Tall Ships Cultural Programme. (£13,457.82 SIB approved on 05.03.18 to support 14 projects).	<ul style="list-style-type: none"> • 5th March 2018 Area Committee approved funding for the delivery of a cultural programme of activities linked to Tall Ships. <p>Monitoring & Evaluation Summaries:</p> <ul style="list-style-type: none"> • CEED – Wave to Waste: The schools programme element of Wave to Waste was delivered over June and July 2018. It engaged 3 classes from Dame Dorothy Primary School and consisted of two elements – visits to Roker beach and classroom based sessions led by CEED • Sunderland Empire – Sail to the Stage: Project activities took place between June and July as projected, prior to the Tall Ships festival engaging 150 participants*, plus teachers from Fulwell Juniors, Southwick, and Monkwearmouth Academy. All participants took part in a Tall Ships “Crew” teambuilding workshop as well as a tour of Sunderland Empire Theatre, delivered in kind with activities. • Sunderland Community Action Group – Small Ship Building at Roker Park: S.C.A.G delivered 4 sessions in June and July. Over this period, we engaged with 30 families (38 children) 19 young people (unaccompanied) and 11 independent adults. S.C.A.G had to adapt the sessions plans previously submitted as we were unable to collect large amounts of plastic and rubbish as many other organisations and members of the public had successfully cleaned the beach. We did collect smaller amounts of plastic and bottles from other sources including play provisions from within the St 	2017/18

		<p>Peters ward. Children and adults created boats from a mixture of recycled found materials from the beach and materials that we supplied. Many of the boats that were constructed were taken home by children as they wanted to see if it would sail in their paddling pool at home or even in the bath. Parents were keen for his to happen. Several children sailed their boats in sea pools and then proudly carried them home.</p> <ul style="list-style-type: none"> • Fulwell Community Library – Tall Ships: Project started in May engaging with 8 local schools to whom we delivered posters advertising a competition. Entries were received and judged in the library. Prizes were awarded to 2 schools consisting of vouchers and led to an estimated involvement of 240 children directly plus another 200 at presentations at the reception. Many children brought their parents to the library afterwards to see their work. The books bought were put on display in the library and well used before being added to the selves as a permanent memento of the Tall Ships in addition banners and bunting was placed outside the library and within Sea Road to celebrate the Tall Ships. • Sunderland Volunteer Life Brigade Project: The project started with events from 28th April until the last day of the tall ships project 14th July 2018. All events were sold out with some fantastic comments and feedback provided by the people that attended. The project accessed people of all ages and abilities from across the city and introduced people to the Brigade and its history as well as offering the opportunities to learn new skills. It was an extremely popular and successful project for both the members of the public that attended and visited the historic watch house and the team members of the Brigade that ran the workshops and family days. • 21st St. Andrews Cub Packs – Sails on the Wear: The project commenced in April with a visit to Sunderland Maritime Heritage where the cubs learned about Sunderland's shipbuilding history and maritime heritage. Maritime heritage kindly donated a copper plaque placed on the HMS Venerable to 21st St. Andrews Cub Packs and they are immensely proud to receive this accolade. 20 cubs took part in the Art Workshops in May & June where they also learned about the coastal environment and current issues in addition to new create skills and made their sails for the welcome parade. 23 cubs took part in the Welcome Parade on the 11th of July carrying their sails whilst engaging in the carnival the sails were exhibited afterwards at Tall Ships event Sumer Streets Festival at Seaburn Recreation Park on Saturday 14th of July. • Friends of Fulwell – Ship Ahoy: Sea Road and Fulwell was decorated with flags and bunting designed and made by local children to help celebrate the 	
--	--	-------------------------------------------------------------------------------------------------------------------------------------------------------------------------------------------------------------------------------------------------------------------------------------------------------------------------------------------------------------------------------------------------------------------------------------------------------------------------------------------------------------------------------------------------------------------------------------------------------------------------------------------------------------------------------------------------------------------------------------------------------------------------------------------------------------------------------------------------------------------------------------------------------------------------------------------------------------------------------------------------------------------------------------------------------------------------------------------------------------------------------------------------------------------------------------------------------------------------------------------------------------------------------------------------------------------------------------------------------------------------------------------------------------------------------------------------------------------------------------------------------------------------------------------------------------------------------------------------------------------------------------------------------------------------------------------------------------------------------------------------------------------------------------------------------------------------------------------------------------------------------------------------------------------------------------------------------------------------------------------------------------------------------------------------------------------------------------------------------------------------------------------------------------------------------------------------------------------------------------------------------------------------------------------------------------------------------------------------------------------------------------------------------------------------------------------------------------------------------------------------------------------------------------------------------------------------------------------------------------------------------------------------------------------------------------------------------------------------------------------------------------------------------------------------------------------------------------------------------------------------------------------------------------------------------------------------------------------------------------------------------------------------------------------------------	--

		<p>tall ships arrival. A flag pole was installed on Fulwell Green and a flag raising ceremony carried out in June by the Deputy Mayor Councillor David Snowdon and Graeme Hall of the Armed Forces Network.</p> <ul style="list-style-type: none"> • EON Arts – The Small Ships: The workshops were attended by 65 people in the three venues St. Cuthbert's Church Hylton Red House, St Bede's Church Town End Farm and SNYP at Southwick. The participants ranged in age from 9 – 92 years of age and included young vulnerable people, older residents of a local care home, parishioners and members of local community groups. In addition a free session was ran at Town End Farm to enable extra work to be completed. All the sessions were very well received and group leaders said that participants had learned new skills and enjoyed the work. The Town End Farm Community group are also keen to pursue further partnerships with Eon Arts CIC to help them host community theatre and additional workshops. • Sunderland Carers Centre: The project commenced June 2018 working in partnership with Adventure Sunderland and Sunderland Yacht Club. 10 Carers of all different ages living in Sunderland North attended a session at the Marina they learned about Sunderland shipping history before venturing out onto the marina in Bell Boats. For many this was their first experience of this activity, they learned how to work as a team with young and older carers working together. • Roker URC – Family Fun Day Event: This one day event targeted family groups in the local community. Families from the neighbourhood including local asylum and refugee community came together to experience fun and educational activities, enjoying each other's company and helping to break down racial and cultural barriers. • Hylton Redhouse Nursery – Silk, Sails & Songs of the Sea: Young people participated in artist workshops and musical workshops which resulted in banners made to celebrate the tall ships and a lyric booklet produced and a song for the young children to perform. • Southwick & Monkwearmouth Community Transport – Tall Ships Visits: Six groups of disadvantaged and socially isolated people visited the Tall Ships event between 11th and 15th July with transport provided by SMCT. A total of 70 individuals who would have found it difficult to access such an activity were able to be part of this fantastic event, as a result several of these people have been encouraged to take part in similar trips this will reduce the change of isolation and benefit them physically and mentally. • Forget me Knot Wellbeing CIC – Tall ships MakEM Activities Group – Delivered several workshops including design of large cardboard ship, 	
--	--	------------------------------------------------------------------------------------------------------------------------------------------------------------------------------------------------------------------------------------------------------------------------------------------------------------------------------------------------------------------------------------------------------------------------------------------------------------------------------------------------------------------------------------------------------------------------------------------------------------------------------------------------------------------------------------------------------------------------------------------------------------------------------------------------------------------------------------------------------------------------------------------------------------------------------------------------------------------------------------------------------------------------------------------------------------------------------------------------------------------------------------------------------------------------------------------------------------------------------------------------------------------------------------------------------------------------------------------------------------------------------------------------------------------------------------------------------------------------------------------------------------------------------------------------------------------------------------------------------------------------------------------------------------------------------------------------------------------------------------------------------------------------------------------------------------------------------------------------------------------------------------------------------------------------------------------------------------------------------------------------------------------------------------------------------------------------------------------------------------------------------------------------------------------------------------------------------------------------------------------------------------------------------------------------------------------------------------------------------------------------------------------------------------------------------------------------------------------------------------------------------------------------------------------------------------------------------------------------------------------------------------------------------------------------------------------------------------------------------------------------------------------------------------------------------------------------------------------------------------------------------------------------------------------------------------------------	--

		<p>implementation and building of the ship and decoration, arts and crafts sessions, shared stories of local ship building heritage and a song was composed. The groups that were involved were Dance Class for over 50s, Dementia Coffee Morning, attendees of monthly tea parties, FODI group. Through the medium of art bonds and new friendships were developed and participants came along to the Roker URC Family Fun Day to see the large ship in addition the ship was used in the school holiday activities and the children helped to add more art work and learn about their local heritage.</p> <ul style="list-style-type: none"> • All About You North East CIC – Community Fun Day – Application withdrawn and funding returned to Area Committee. 	
2.5	Activities for Young People (£20,000 SIB approved on 05.03.18 for 5 projects to be deliver through the Raising Aspiration's Partnerships.)	<p>5th March, 2018 Area Committee approved funding for the delivery of Ward Based Youth Activities by the following partners</p> <ul style="list-style-type: none"> • NE Sport • Southwick Neighbourhood Youth Project (SNYP) • Sunderland North Community Business Centre (SNCBC) • IAM Sports • Sunderland Community Action Group (SCAG) <p>Monitoring & Evaluation:</p> <p>NE Sport – Let's Do This Project:</p> <ul style="list-style-type: none"> • We successfully ran a beach camp in May Half term, these again were very well attended. The weather was not great but we still managed to have a fantastic time. Activities included, sand castle building, sports and games, shelter building and plodding. We also took part in some beach cleans. • Table Tennis, sessions for two hours each at the Fulwell Community Library delivered on a weekly basis, these were very relaxed and just as a drop in. The sessions proved popular with young people and it was a good way of providing them with a safe environment and away off the streets. This session is now a youth session and we are also holding regular consultation with young people to make sure we are meeting their needs, we are also delighted to have the support of the local community Police who have been dropping in on the sessions. <p>SNYP – Providing Opportunities and Activities for Young People in Southwick:</p> <ul style="list-style-type: none"> • The project began in March 2018 and has allowed us to work with 116 individual young people where we've given access to positive opportunities and activities. The young people we have worked with were involved in 	2018/19

		<p>planning the activities and outings so we knew their interests and needs were catered for. We encouraged the young people to access a diverse range of activities, both local and further afield. The local, city based activities show the young people what they can access on their own doorstep – gives them confidence to hopefully try the activities again in the future and recognise the wonderful opportunities in Sunderland. The outings that were further afield were also beneficial because the young people got to try new things not available locally such as gorge walking and theme parks. We have worked in partnership with other projects in the area to deliver the work and this is something we hope to continue because our partners have unique skills and it gives the young people access to positive role models and adults who want to help make a difference in their lives. The young people get so much from the activities, the gorge walking trip we did was with the lads group at SNYP, as part of a summer residential they planned. It allowed the lads to try something new, face fears and share experiences together</p> <ul style="list-style-type: none"> • Having the opportunity to have the social chef in SNYP helps us to educate the young people about cooking and healthy eating; it also lets us address the issue of holiday hunger that is present in some areas of our community. The young people like working with the social chef as he involves them at each stage of the activity – they help to plan menus, prepare, cook and serve food as a group – for many of the young people it is the only time away from school that they'll sit around a table and share a group meal. The process is rewarding because the young people leave with new knowledge, skills and confidence. • Some of the young people at SNYP engaged in the opportunity to write a story about Southwick, this activity was delivered with a local writer who has the skills and ability to demonstrate to the young people their hidden talents and creativity. The stories were written over a few sessions and we got them printed into booklets for the young people, we have a few copies at SNYP but are hoping to put the books onto amazon and showcase the wonderful work they have done. The stories were read aloud at the Summer Streets festival so that the connection with Southwick was still evident. <p>IAM Sports – Youth Café Project:</p> <ul style="list-style-type: none"> • The Youth Café will launch on Friday, November 9th and run each week during term time from 6-8pm at St Cuthberts Church in Red House. We were awarded the funding in April for this project, since then we have carried out further consultation with young people and liaised with the venue. There have also been improvement works carried out at the venue, which has caused 	
--	--	-------------------------------------------------------------------------------------------------------------------------------------------------------------------------------------------------------------------------------------------------------------------------------------------------------------------------------------------------------------------------------------------------------------------------------------------------------------------------------------------------------------------------------------------------------------------------------------------------------------------------------------------------------------------------------------------------------------------------------------------------------------------------------------------------------------------------------------------------------------------------------------------------------------------------------------------------------------------------------------------------------------------------------------------------------------------------------------------------------------------------------------------------------------------------------------------------------------------------------------------------------------------------------------------------------------------------------------------------------------------------------------------------------------------------------------------------------------------------------------------------------------------------------------------------------------------------------------------------------------------------------------------------------------------------------------------------------------------------------------------------------------------------------------------------------------------------------------------------------------------------------------------------------------------------------------------------------------------------------------------------------------------------------------------------------------------------------------------------------------------------------------------------------------------------------------------------------------------------------------------------------------------------------------------------------------------------------------------------------------------------------------------------------------------------------------------------------------------------------------------------------------------------------------------------------------------------------------------------------------------------------------------------------------------------------------------------------------------------------------------------------------------------------------------------------------------------------------------------------------------------------------------------------------------------------------------------------------------------------------------	--

		<p>delays, and our project was quieter over the 6 weeks summer holiday, due to other provision and SIB funded activities.</p> <ul style="list-style-type: none"> • Since September we have put final preparations in place and are hugely excited for the launch. We have based the café on feedback from young people, whose main concerns were somewhere safe and warm they could go, with WiFi capability. We are also offering food and refreshments, we will offer games consoles and movies, sporting activities, and also be able to hear and address any issues which the young people have. We are keeping the local Police involved so they can signpost people towards the café, or point out any potential young people who may only wish to cause problems, although we are hopeful this will be a minimal issue, but one we must prepare for. We have a very close working relationship with St Cuthberts church, and have a wide scope for changes and improvements going forward. We are very positive and hopeful that the café will prove to be a successful and tackle some of the main issues faced by young people within our ward, with benefits also reaching to the wider community. <p>Sunderland Community Action Group – Fit & Fed in St. Peters:</p> <ul style="list-style-type: none"> • The Summer fun fit & fed program was delivered via members of the St Peters Partnership. The delivery partners were Sunderland Community Action Group, Social Chef & Forget Me Knot CIC. The program was delivered in two venues (Dame Dorothy Primary School & Roker URC) over three sessions a week. The program was delivered over the summer holidays (6 weeks in total). The provision helped support children, parents & carers from low-income families who may have been under greater stress because of the added costs incurred over the holiday period and the lack of free provision available in the area. SCAG and FMK provided a range of multi-sport activities, Art's and Craft's and themed in-house activities. These activities included wake up – shake up (Aerobic dance warm up and stretchers) Football, urban Golf, Netball, Cycling, Quick Cricket, Puppetry, Kite building & Flying, Den Building, Dinosaur building, Gardening and Superheroes day. The activities were designed to encourage young people to get mentally and physically active. Workers encouraged young people to socialise with their peers, Staff members and volunteers. This helped to build relationships, confidence and self-esteem. The program also provided a range of bespoke culinary activities delivered by Social chef. The cookery activities included budgeting, safe food preparation, and serving a range of nutritious food to young people and families attending the activities. We had a fantastic response with 120 children taking part in activities over the summer holidays. 	
--	--	--------------------------------------------------------------------------------------------------------------------------------------------------------------------------------------------------------------------------------------------------------------------------------------------------------------------------------------------------------------------------------------------------------------------------------------------------------------------------------------------------------------------------------------------------------------------------------------------------------------------------------------------------------------------------------------------------------------------------------------------------------------------------------------------------------------------------------------------------------------------------------------------------------------------------------------------------------------------------------------------------------------------------------------------------------------------------------------------------------------------------------------------------------------------------------------------------------------------------------------------------------------------------------------------------------------------------------------------------------------------------------------------------------------------------------------------------------------------------------------------------------------------------------------------------------------------------------------------------------------------------------------------------------------------------------------------------------------------------------------------------------------------------------------------------------------------------------------------------------------------------------------------------------------------------------------------------------------------------------------------------------------------------------------------------------------------------------------------------------------------------------------------------------------------------------------------------------------------------------------------------------------------------------------------------------------------------------------------------------------------------------------------------------------------------------------------------------------------------------------------------------------------------------------------------------------------------------------------------------------------------------------------------------------------------------------------------------------------------------------------------------------------------------------------------------------------------------------------------------------------------------------------------------------------------------------------------------------------------------------------	--

		18 sessions were delivered over the course of the summer holidays with 438 meals delivered. We also gave 13 volunteers the opportunity to gain valuable experience working alongside qualified members of staff who were delivering a range of Youth & Play provision. We had really positive feedback from parents who commented on how welcoming and friendly the staff team were and how they were made to feel fully included in all aspects of the program.	
3	Job Prospects and Skills	Progress Update	Due for Completion/ Implementation
3.1	<p>CLLD Match Funding:</p> <p>a. 4 project applications to be considered at June Area Committee to support the delivery of North Area Priorities and Community Led Local Development (CLLD) Priorities in the area. (£153,985 of SIB previously aligned as match funding for CLLD Projects).</p> <p>b. Explore the potential of apprenticeships with CLLD and Place Management.</p>	<p>7th June, 2018 Area Committee approved SIB match funding for the following Community Led Local Development (CLLD) projects subject to successfully securing CLLD Funding</p> <ul style="list-style-type: none"> Wellbeing Works – Grace House & HOPs – successfully secured CLLD funding REACT Project – Sunderland North Community Business Centre – successfully secured CLLD funding Skilled Up – Hylton Castle – progressed first stage of CLLD funding currently developing application for second stage. 	2018/19
4	<p>VCS Capacity Building - Continue to support the development and engagement with VCS organisations through the North Area VCS Network, to include:-</p> <ul style="list-style-type: none"> Identify local solutions to local problems for referral to boards. Support and signposting on funding opportunities and the completion and development of funding applications. Support and sign posting for volunteer development. Continue to support organisations who deliver services and activities that benefit the community. 	Progress Update	Due for Completion/ Implementation

4.1	<p>Continue to work with CAs to develop capacity as a community hub including:-</p> <ul style="list-style-type: none"> a. Dame Dorothy Community Hub (£25,000 SIB approved 13.11.17) b. Fulwell Community Library (£24,446 SIB approved 13.11.17) c. Redhouse Community Centre to support refurbishment of Kitchen and develop outside space (£17,150 SIB aligned 5.3.18 – full application to be considered at June Area Committee) d. Southwick Community Centre to support refurbishment (£25,000 SIB aligned on 5.3.18 full application to be considered at June Area Committee) e. St Bede's Community Venue – Venue Refurbishment Project (£25,000 SIB approved 05.03.18) f. St Cuthbert's Community Hall Group – Garden Project (£7,850 SIB approved 05.03.18). g. Redby C.A., Thompson Park C.A., Castletown C.A., and Redhouse C.A.(Consider approval of £5,000 to each of the 4 Self Supporting CAs in the North) 	<p>Monitoring and Evaluation:</p> <ul style="list-style-type: none"> • Dame Dorothy Community Hub - We had delays in the works being started due to insufficient funds, after numerous planning meetings involving the architect and builders a scheme of works was put together. We have since had to create a phase 1, phase 2 and phase 3 with phase 1 being achieved using the SIB funding. We worked with the planning department to ensure compliance with regulations. Planning and building consent obtained, major works started, new disabled toilet space has been created with walls also being removed to create the open spaces, levelling garage floor to be DDA compliant, drainage complete, first fix electrics in place. Further building work on hold whilst awaiting notification of further funding applications. • Fulwell Community Library – Project to install disabled toilets and a new vestibule is now complete • Redhouse Community Centre – 7th June agreed the SIB application and the project is now complete with kitchen refurbishment and gents' toilet refurbishments complete apart from some small redecoration of areas. The refurbishment of the two kitchens and gents toilet has made a great improvement to the community centre and very much appreciated by the members. • Southwick Community Centre – 7th June agreed the SIB application and the project is now complete with kitchen refurbishment, toilet refurbishment, electrical upgrades, installation of new doors and flooring renewal complete. This has led to more members of the community approaching the committee to use the centre. • St. Bede's Community Venue – The project has a two month extension period to enable the full transfer of lease to the community group before commencing this project. • St. Cuthberts Community Hall – Work has commenced and updates will be provided 	2018/19
4.2	Consider feedback from Priority setting discussion with North VCS network and consider where Area Committee can support/add value.	<ul style="list-style-type: none"> • The North VCS Network continues to meet on a regular basis and receives presentations and information in order ensure effective partnership working. • The Area Network representatives continue to support groups and advise of the opportunity to share project delivery, raise issues and concerns of the Sector. 	
4.3	Universal Credit and requirement to have at least basic digital skills and access to ICT. Consider what ICT kit and support is already available in the North and consider any possibility for Area Committee to support/add value to this.	<ul style="list-style-type: none"> • Future Boards to discuss the potential of a project to support ICT hubs within VCS organisation which support North residents to access ICT for Universal Credit. 	

Cross Cutting Priorities – People and Place

1	Raising Aspirations and Making Positive Changes – Projects which will “Encourage and raise the aspirations of local people by providing them with support, activities and resources to make positive changes in their local area bring about behaviour change and reduce demand for services”	Progress Update	Due for Completion/ Implementation
1.1	Friends of Thompson Park & Southwick Partnership – Raising Aspirations and Making Positive Changes (£50,000 SIB approved 05.06.17)	<p>Monitoring and Evaluation Update:</p> <ul style="list-style-type: none"> • Crafty cuppa – Sunderland Carer’s Centre Crafty Cuppa continues to be a very popular programme here at Sunderland Carers Centre. Crafty Cuppa is an informal 6-week course where by candidates can gain skills in a variety of art and craft activities. This also enables them to gain access to peer support, information, advice, and guidance, in addition to building upon or learning new skills. One of the aims of the group is that new friendship groups are made and new skills are recognised and developed. The sessions continue to be facilitated by 2 of the original carer attendees who now feel confident enough to facilitate Crafty Cuppa within a volunteering role. We have provided transport for those who would otherwise find it very difficult to attend the Project. • SYPBP – Thompson Park Café Sessions delivered include Dr Bike sessions. The Dr Bike sessions are popular with the community and an array of bikes were brought to our mechanic in which he gave the bicycles a safety check and then completed any minor adjustments that may have been required to make the cycle safer. We also held a family event in which members of the community were invited to take part in a local cycle ride, taking in views of the Sunderland Riverside and coastline. There was also an adult only bike ride from Stanhope to Sunderland, one to Kielder and a family Hamsterley Forest outing. • Sunderland home grown at The Flower Mill The Bee keeping group has had the regulars return with 4 -6 people each week and some new people dropping in and out. We planning to work with pupils from Barbra Priestman School before the end of term. The observation hive has been purchased and the bees are back to full strength. Following from some issues in the park and garden centre, where damage was made to property and items stolen, the Friends of Thompson Park requested the alignment of SIB money for improved security which included new CCTV and improved fencing. Both 	2017/2019

		<p>works have now been carried out and we are hopeful that they will prove to be an effective deterrent. During the summer holidays we worked with the young people from Southwick Neighbourhood Youth Project. We introduced the young people to beekeeping, gardening, growing and planting food, garden design and scare crow building. We have also continued to provide a learning environment for young adults with learning disabilities. They enjoy their time at the garden and have worked to create a space that will be enjoyed by the whole community.</p> <ul style="list-style-type: none"> • SNYP Drop-in Youth Sessions - These sessions are still well attended, the young people coming in to access the many activities we provide as well as the intervention and support on offer at SNYP. We have provided an environment where young people have been able to build positive relationships with one another, enjoy spending time with their peers and taking part in fun activities such as Fortnite, pool tournaments and cooking. The young people have enjoyed a variety of activities including arts and crafts, cooking, computer and board games. The young people also came along to Flamingoland where they were able to spend time with their friends and have some fun. The issue based work we've covered as part of the drop-in youth work has included employment issues, exams and results, smoking cessation and sexual health. • Junior youth sessions - The junior youth work sessions at SNYP are always lots of fun. The young people make their own programmes and are supported by the staff to take ownership of the project and work together to create a warm and welcoming environment. During the last quarter there have been cooking and craft activities, holiday fun in Thompson and Saltwell Park. The juniors took part in sessions linked to the tall ships event too – they have tried wood burning with artist Ian Potts and they are working with local author – Alan Parkinson to create their own stories to link to the event. Junior work. The junior work at SNYP attracts young people from Southwick Primary, Grange Park Primary, Willow Fields and English Martyrs. The young people plan their own programmes with support from staff. During Q2 they also enjoyed visiting the Tall ships, writing stories for the Summer Streets festival and taking part in summer holiday outings to Broomhouse Farm, Penshaw Monument, River walk and Flamingo Land. The junior group went along to the Wonderlooper event to celebrate the opening of the new bridge too. The group are busy planning for October half term holidays. • Youth Social Action. The SNYP Youth Council have been busy they enjoyed a visit to Bristol where they stayed on a hostel boat and got to meet many city officials and projects who all helped to teach them about more 	
--	--	--------------------------------------------------------------------------------------------------------------------------------------------------------------------------------------------------------------------------------------------------------------------------------------------------------------------------------------------------------------------------------------------------------------------------------------------------------------------------------------------------------------------------------------------------------------------------------------------------------------------------------------------------------------------------------------------------------------------------------------------------------------------------------------------------------------------------------------------------------------------------------------------------------------------------------------------------------------------------------------------------------------------------------------------------------------------------------------------------------------------------------------------------------------------------------------------------------------------------------------------------------------------------------------------------------------------------------------------------------------------------------------------------------------------------------------------------------------------------------------------------------------------------------------------------------------------------------------------------------------------------------------------------------------------------------------------------------------------------------------------------------------------------------------------------------------------------------------------------------------------------------------------------------------------------------------------------------------------------------------------------------------------------------------------------------------------------------------------------------------------------------------------------------------------------------------------------------------------------------------------------------------------------------------------------------------------------------------------------------------------------------------------------------------------------------------------------------------------------------------------------------------------------------------------------------------------------------------------------------------------------------------------------------------------------------------------------------------------------------------------------------------------------------------------------------------------------------------------------------------------------------------------------------------------------------------------------------------------	--

		<p>environmentally ways of life and how they can help Sunderland become Greener – the youth council are working on a presentation to feed back to the Sunderland North Area committee. During the half term break the group organised a trip to Saltwell Park for the junior club at SNYP, they completed a risk assessment for the trip – did a reconnaissance so they knew what activities would be suitable and compiled a shopping list so they could take a well-balanced picnic for all of the juniors to share. The youth council have delivered leaflets for Sunderland Carers Centre fun day and are going to be delivering a range of activities at the Summer Streets Festival for teens to enjoy. There has been positive social action carried out over the past few months. In July the youth council organised and delivered activities at the Summer Streets festival – their activities were aimed at other young people to make them feel part of the day. The young people made tie dye t-shirts, bracelets and small musical instruments. One of the members was interviewed by Spark FM and spoke positively about the opportunities that social action has provided her. The young people also attended the recent conference to ensure they represented youth from Southwick and gave them a voice in this area. The group has welcomed new members and are planning their social action for the rest of the year which includes litter picks, organising activities in school holidays, working with children and young people at the Southwick Lantern Festival and being part of the Southwick Illuminations again.</p> <ul style="list-style-type: none"> • SNYP have been working in partnership with NE sports to ensure delivery of grassroots football sessions in Thompson Park. The sessions at Thompsons park got off to a great start in May half term and we had quite a few attending, 13 a session, lots of young people also came down to Monkwearmouth Academy to try out for some of NE Sport teams. • Crafty Guys & Dolls Art Group – Salvation Army - The Crafty Guys & Dolls are a group of adults aged between 29 and 65 with various physical and learning disabilities, who live in supported living homes. They attend the creative arts group every Friday in Austin House with a support worker. The aim of the work is to engage participants in creative arts, raising aspiration, self-esteem and confidence. It also enables them to become active within the local community, eliminating isolation. Mixed media within the art work is used, often using recyclable materials. The art work can be quite challenging to the participants but with support and guidance they produce some fabulous pieces of art work that they feel proud of and have a real sense of achievement. 	
--	--	----------------------------------------------------------------------------------------------------------------------------------------------------------------------------------------------------------------------------------------------------------------------------------------------------------------------------------------------------------------------------------------------------------------------------------------------------------------------------------------------------------------------------------------------------------------------------------------------------------------------------------------------------------------------------------------------------------------------------------------------------------------------------------------------------------------------------------------------------------------------------------------------------------------------------------------------------------------------------------------------------------------------------------------------------------------------------------------------------------------------------------------------------------------------------------------------------------------------------------------------------------------------------------------------------------------------------------------------------------------------------------------------------------------------------------------------------------------------------------------------------------------------------------------------------------------------------------------------------------------------------------------------------------------------------------------------------------------------------------------------------------------------------------------------------------------------------------------------------------------------------------------------------------------------------------------------------------------------------------------------------------------------------------------------------------------------------------------------------------------------------------------------------------------------------------------------------------------------------------------------------------------------------------------------------------------------------------------------------------------------------------------------------------------------------------------------------------------------------------------------------------------------------------------------------------------------------------------------------------------------------------------------------------------------------------------------------------------------------------------------------------------------------------------------------------------------------------------------------------------------------	--

1.2	St. Peter's Youth and Community Partnership - Raising Aspirations and Making Positive Changes Project (£50,000 SIB approved 05.06.17)	<p>Monitoring and Evaluation Update:</p> <p>Tesco Play Sessions</p> <ul style="list-style-type: none"> • David Robinson (Social Chef) has attended sessions to encourage the children to take part in healthy eating and cooking activities and SNCBC staff have delivered healthy cooking sessions. • The children have access to healthy snacks and drinks within the sessions and have taken part in consultation regarding activities in the summer holidays and have attended the cinema as part of this discussion. They have also visited Roker Park to undertake a multi sports session with staff • Sessions continue to attract good attendance and continue to be run from Tesco Community Room, Roker Retail Park. Approximately 10 of the children are under child protection or have emotional/learning difficulties. • Activities include healthy cooking, visit to the beach for beach games and to Roker Park for multi-sports session, arts and crafts, board games and having a meal in Tesco's café as a treat for taking part in anti-bullying workshop. <p>St Peters Detached Sessions</p> <ul style="list-style-type: none"> • The young people have taken part in a number of issue based information workshops including sexual health, anti bullying, training and education drugs and alcohol, relationships, healthy lifestyles and are working with staff to devise their own summer program of activities to include a visit to the MAC Centre and Snowtubing at Silksworth Sports Complex. • Sessions have had good attendance. Staff have worked with young people at a range of venues across the St Peter's ward including Roker Beach, Roker Pods, Roker Park and alongside the River Wear (Glass Centre). <p>SCAG Play session</p> <ul style="list-style-type: none"> • Young people took part in a range of activities over the course of June: Healthy eating on a budget, Children had the opportunity to try new foods, experiment with different textures and flavour combinations. Art activities included: tissue collage landscapes, print making, drawing and designing. Children had the opportunity to try new art techniques and express their own ideas and thoughts. • The trips to the River & Beach have encouraged young people to engage with their local environment. We encouraged young people to think about the issues surrounding plastics and the impact it has on the local 	2017/2019
-----	---------------------------------------------------------------------------------------------------------------------------------------	---------------------------------------------------------------------------------------------------------------------------------------------------------------------------------------------------------------------------------------------------------------------------------------------------------------------------------------------------------------------------------------------------------------------------------------------------------------------------------------------------------------------------------------------------------------------------------------------------------------------------------------------------------------------------------------------------------------------------------------------------------------------------------------------------------------------------------------------------------------------------------------------------------------------------------------------------------------------------------------------------------------------------------------------------------------------------------------------------------------------------------------------------------------------------------------------------------------------------------------------------------------------------------------------------------------------------------------------------------------------------------------------------------------------------------------------------------------------------------------------------------------------------------------------------------------------------------------------------------------------------------------------------------------------------------------------------------------------------------------------------------------------------------------------------------------------------------------------------------------------------------------------------------------------------------------------------------------------------------------------------------------------------------------------------------------------------------------------------------------------------------------------------------------------------------------------------------------------------------------------------------------------------------------------------------------------------------------------------------------------------------------------------------------------------------------------------------------------------------------------------------------------------------------------------------------------	-----------

		<p>environment and wildlife. We discussed how positive actions can make a difference. Young people worked in small groups to make art work and sculptures from found objects on the beach.</p> <ul style="list-style-type: none"> • Children have increased self-confidence, increased personal development and strengthened community cohesion- supporting each other while taking part in activities. Developing team work. Young people have become more aware of local and national environmental issues. All activities are delivered in a fun stress free way. This gives young people the opportunity to learn at their own pace while having fun. <p>SCAG Detached</p> <ul style="list-style-type: none"> • Detached sessions have picked up due to the good weather. The detached team targeted a number of area's across St Peter's ward and focused more time on Roker Park and the beach area as young people were spending more time in those area's due to the good weather. We have been working with young people & older members from the URC church developing their garden space. Staff have been supporting young people with cutting back shrubs, small trees and cutting back weeds & grass. The young people have built a number of raised beds planters and will be working across the summer months to help finish it off before the winter weather sets in. • Following the major issues in and around the Roker avenue area, our staff team have been working with young people to try to calm fears and answer any questions they might have. Tensions are running high in the area regarding fear of sexual crime, racism and a major lack of understanding regarding community cohesion. We are seeing more young people being pro far-right in that area, young people are receiving information (most of it false) via Facebook and other social media which is stirring up hatred in the community. We have held discussions with our local beat regarding how best we can support the team over the coming weeks/months in that area. Following on from young people's comments we are looking at developing & delivering a number of Youth initiatives, We will be targeting young people in that area, focusing on reducing the fear of sexual crime, building community cohesion while reducing the threat of racism. • Detached sessions went well due to the fantastic weather we had over the summer months. The detached team were still targeting a number of areas across St Peter's ward and were focusing more of their time around the Tesco's shopping parade, Roker Park and the beach area as young people were spending more time in those areas. Numbers of young people hanging around Tesco's have increased over the summer months. The 	
--	--	------------------------------------------------------------------------------------------------------------------------------------------------------------------------------------------------------------------------------------------------------------------------------------------------------------------------------------------------------------------------------------------------------------------------------------------------------------------------------------------------------------------------------------------------------------------------------------------------------------------------------------------------------------------------------------------------------------------------------------------------------------------------------------------------------------------------------------------------------------------------------------------------------------------------------------------------------------------------------------------------------------------------------------------------------------------------------------------------------------------------------------------------------------------------------------------------------------------------------------------------------------------------------------------------------------------------------------------------------------------------------------------------------------------------------------------------------------------------------------------------------------------------------------------------------------------------------------------------------------------------------------------------------------------------------------------------------------------------------------------------------------------------------------------------------------------------------------------------------------------------------------------------------------------------------------------------------------------------------------------------------------------------------------------------------------------------------------------------------------------------------------------------------------------------------------------------------------------------------------------------------------------------------------------------------------------------------------------------------------------------------------------------------------------------------------------------------------------------------------------------------------------------------------------------------------------------------------------------------------------------------------------------------------------------------------------------------------------------------------------------------------------------------------------------------------------------------------------------------------------	--

		<p>Detached team picked the young people by minibus and took them down to the beach and delivered a number of football/sports sessions with them over the holidays. By taking away from the Tesco's shopping area helped reduce the strain on our local community police officers regarding ASB call-outs.</p> <ul style="list-style-type: none"> Over the summer we have also seen more young people coming into the area via the metro and were hanging around the stadium metro station. A lot of those young people were from other parts of Sunderland and South Tyneside. Some of the group have BMX bikes and are riding them around the metro car park and also under Tesco's car park. We have made contact with this group and are monitoring their movements over the next few months. We attended the summer fun beach party event on the 10th of August with a group of 14 young people. The event was well attended and our group had a fantastic time participating in a range of activities on offer. 	
1.3	Raising Aspirations and Making Positive Changes in the Castle Ward (£50,000 SIB approved 05.06.17)	<p>Monitoring & Evaluation Update:</p> <ul style="list-style-type: none"> Hylton Castle Working Men's Club Coffee Afternoon has been established The project has supported Castletown Community Centre to set up a Toddler Group which started on Tuesday 10th July. The session is being promoted across local schools and nurseries. The project has coordinated local groups to develop a partnership to deliver a family funday, Hylton Castle Primary school are now working with Hylton Castle Working Men's Club to hold the event in the club. The event will include family activities, tombola stalls, games and crafts etc. Raising Aspirations will be supplying resources for the event to go ahead and will have a free prize draw to recruit volunteers to the project. The project has supported St Bede's and TEFRA and has acted as a mediator to tackle some of the issues and has negotiated a group approach to decision making they have now developed a shared community vision and have begun to work together and sharing resources and have developed a shared letter head. The project is currently engaging with around 12 individuals supporting them to understand governance roles and responsibilities, we have delivered first stage governance training and will develop a more robust needs based training model in the coming weeks. St Bede's Community Venue has also been supported to apply for a Community Chest award for new Coffee afternoon for over 50's. We have applied for £830 to establish this new group. Raising Aspirations have also supported the forthcoming funday providing resources including tables chairs 	2017/2019

		<p>and fencing, which otherwise could not be sourced.</p> <ul style="list-style-type: none"> • The project has been working in partnership with Hylton Castle Project to develop work to benefit the Castle ward, currently we have completed Litter Picks at Hylton Castle Dene, supported with the Royal Wedding Event. Future joint working will include remedial work around the Ponds in the Dene and Reservoir. Teddy Bears Picnic in Hylton Castle Park which will take place in the coming quarter. • Hylton Castle Mission – Are currently interested in Raising Aspirations supporting them with a funding application to Wearmouth Community Development Trust Legacy funding for additional resources, • Raising Aspirations has arranged English Civil War Society Workshops with local schools in the ward to promote the Battle Re-enactment event in the ward, 3 Workshops were held in Hylton Castle Primary School and 1 workshop in Town End Farm Academy. Children and teachers were both very enthusiastic and got involved in the workshops. All children were very keen to attend the Battle Re-enactment in August. • Hylton Castle Dene Ponds – the project is working with a fishing group who are interested in clearing the pond areas and setting up an organised "Fishing Club". • Raising Aspirations have developed a new youth session in Town End Farm Youth Club which is a music session, young people are given the opportunity to look at all areas of music including recording, developing soundtracks and playing music. There are currently 15 members regularly attending the weekly session. • A number of littler pick events have occurred linking with the residents and local schools. • A Castle Ward Raising Aspirations Facebook page has been developed along with a 'what's on in Castle Ward' information leaflet that is being regularly updated and distributed around the ward. • Raising Aspirations is now registered as a mobile distributor of food bank vouchers and is arranging referrals across key organisations within the ward. • The project has successfully secured CLLD funding to match this project and continue into the future. 	
1.4	Raising Aspirations and Making Positive Changes in the Redhill (£50,000 SIB approved 05.06.17).	<p>Monitoring & Evaluation Update:</p> <ul style="list-style-type: none"> • Former Red House Methodist Church is to reopen and the project will work with the church over the summer to make sure activities are in place ready to begin in September. 	2017/2019

		<ul style="list-style-type: none"> • Free Community Event Through our partnership work with Sunderland North Family Zone we became aware of funding which provides a free afternoon of entertainment to local residents within the city. The day consists of 45 minutes from a singer/entertainer, a game of bingo with guaranteed winners, further entertainment and a free buffet. We have begun consultation with local groups and residents to gauge interest, which has so far been very high. • Youth Football Sessions These youth sessions continue, although there has been some gaps in availability and with venue issues due to the outsourcing of the venue booking system. This has caused several issues, not just for ourselves, but other users. The sessions are still well attended, and the mix of children is good with some from Red House, Downhill and Witherwack mixing well. Feedback from youths has been positive, and they are bringing friends along so we are reaching more people. • Youth Café Thanks to funding from the Area Committee we have been given the go ahead for our Youth Café idea, which we intend to have as a hub for youths in the area, a safe place they can meet, hang out and take part in several activities. We have purchased a projector, screen, Wi-Fi, games consoles and a movie license, so we will be able to screen movies, have games and tournaments etc. • Greggs Collections Through our partnership with Sunderland North Family Zone we continue to collect surplus food from two Gregg's locations in the city, food which would otherwise be out in the bin. Some of the food is sorted into packages and it is then delivered to socially isolated people within the area, most of whom we have been establishing relationships with since our Christmas drop ins. The remainder of the food is taken to community groups within the ward and given to the people who attend there. We hope to add one more collection in the future so as to reach more people and help reduce food waste. At the moment we have only been able to collect items which do not need refrigeration, but we have applied to Greggs so that we will be able to do this and collect and disperse more food to local residents and help reduce waste. • Willowfields Sessions Having completed a year running several different projects with Year 3 and 4 both within the school and at Marley Park Community Fire station we met with the Head to discuss how we can continue to work with the school and help pupils there. We will begin working with all years groups in 4 week blocks per term, each term will include a healthy eating session at the fire station, a litter pick within the local community, an enterprise day where it is intended that children will assist in running of a new Community Shop based within Willowfields Primary, and also a treat week where children 	
--	--	---------------------------------------------------------------------------------------------------------------------------------------------------------------------------------------------------------------------------------------------------------------------------------------------------------------------------------------------------------------------------------------------------------------------------------------------------------------------------------------------------------------------------------------------------------------------------------------------------------------------------------------------------------------------------------------------------------------------------------------------------------------------------------------------------------------------------------------------------------------------------------------------------------------------------------------------------------------------------------------------------------------------------------------------------------------------------------------------------------------------------------------------------------------------------------------------------------------------------------------------------------------------------------------------------------------------------------------------------------------------------------------------------------------------------------------------------------------------------------------------------------------------------------------------------------------------------------------------------------------------------------------------------------------------------------------------------------------------------------------------------------------------------------------------------------------------------------------------------------------------------------------------------------------------------------------------------------------------------------------------------------------------------------------------------------------------------------------------------------------------------------------------------------------------------------------------------------------------------------------------------------------------------------------------------------------------------------------------------------------------------------------------------------------------------------------------------------------------------------------------------------------------------------------------------------------------------------------------------------------------------------------------------------------------------------------------------------------------------------------------------------------------------------------------------------------------------------------------------------------------------------------------------------------------------------------------------------------------------------------------------------------------------------------------	--

		<p>will be taken to the fire station for a movie. We have also discussed other ways we can work together within the school such as PE sessions or after school work. We completed our sessions with Willowfields Primary School in July for the summer. However, thanks to funding from Sunderland North Area Committee, we sent out letters to all parents offering a free beach visit once a week for children in the school over the summer holidays. These places were quickly filled and we worked with SMCT who provided a mini bus for our staff to take these children to the beach. We had very positive feedback from parents and children, who took part in beach games and activities and received free food and refreshments whilst there. For the new term we will again be working with a new class each term to offer sessions including practical healthy eating sessions teaching children about the importance of nutrition and a healthy diet, enterprise days where they learn to identify good and bad foods and think about budgets and pricing, environment days when we will carry out litter picks in the local area, and community cinemas days where children are rewarded with a movie and healthy snacks. Our relationships with Willowfields Primary and Marley Park Fire Station continue to be very positive and we are very happy to be able to offer the children there something different.</p> <ul style="list-style-type: none"> • Community Café We were recently successful with an Awards For All application which will see us be able to expand on the Youth Café concept to offer a Community Café for residents. The café would be open to all residents within the community, we are also looking to engage the socially isolated to bring them towards the café. We have included upskilling courses for staff and the intention is that once funding has ended after the initial 12 months, the café will be self-sustainable. We will offer a range of inclusive activities such as New Age Kurling, to offer something different. The café will initially be open one afternoon per week, but there is potential to open more depending on how well attended it becomes. The café will be based within St Cuthberts Church, and we will be working closely with them to identify the socially isolated. • Red House Community Centre We have worked closely with the committee at Red House Community Centre helping towards the much needed installation of new kitchens thanks to funding from Sunderland City Council. We worked with different companies to gather a range of quotes and designs, which were then presented to the committee for review. Suggestions and ideas were taken and final designs approved with work on the refurbishment to begin in July and be finished before the end of August. • 16-18 Year Old Traineeships In July we met with a former Sunderland player who now operates Back 2 Basics Coaching in the city, based in East 	
--	--	----------------------------------------------------------------------------------------------------------------------------------------------------------------------------------------------------------------------------------------------------------------------------------------------------------------------------------------------------------------------------------------------------------------------------------------------------------------------------------------------------------------------------------------------------------------------------------------------------------------------------------------------------------------------------------------------------------------------------------------------------------------------------------------------------------------------------------------------------------------------------------------------------------------------------------------------------------------------------------------------------------------------------------------------------------------------------------------------------------------------------------------------------------------------------------------------------------------------------------------------------------------------------------------------------------------------------------------------------------------------------------------------------------------------------------------------------------------------------------------------------------------------------------------------------------------------------------------------------------------------------------------------------------------------------------------------------------------------------------------------------------------------------------------------------------------------------------------------------------------------------------------------------------------------------------------------------------------------------------------------------------------------------------------------------------------------------------------------------------------------------------------------------------------------------------------------------------------------------------------------------------------------------------------------------------------------------------------------------------------------------------------------------------------------------------------------------------------------------------------------------------------------------------------------------------------------------------------------------------------------------------------------------------------------------------------------------------------------------------------------------------------------------------------------------------------------------------------------------------------------------------------------------------------------------------------------------------------------------------------------------------------------------------------------------------------------------	--

		<p>Herrington. We met to discuss if there were ways our projects could complement each other. We had a great chat and agreed to meet after the summer, as we would both be very busy over that period with SIB activities and other provision. In September we met again, and this company are working with Everyone Active to offer free Traineeships to 16-18 year olds looking to get into sports and coaching and we are all very keen to make people in our ward aware of the activities. We are working with Back 2 Basics, Marley Park Fire Station and the Princes Trust to find children in the area who may be interested in this program.</p> <ul style="list-style-type: none"> • Tall ships One of our young people applied for and received funding to take his place on board a Tall Ship during the Tall Ships Event. Joe sailed on the Maybe. We talked to Joe since he returned for his feedback, he said that it was the trip of a lifetime and he loved every minute. He wanted to express his gratitude to those who provided the funding for giving him the chance to change his life. He has said since returning he has gained a lot of confidence, has made a lot of new friends and it has made him want to inspire people even more who feel like they may never get that chance that he has, and show that anything is possible. • Community shop Our community shop has continued to be popular with local residents. We have continued to increase the amount of stock in the shop due to support and amount of people attending. We are now looking at ways we can potentially add other community shops in the ward. • Messy Play The current Messy Play sessions ended before the summer holidays, parental feedback was very positive, especially on the amount of activities involved and the addition of Spanish. Unfortunately, our current session leader is unable to continue with the sessions, but we are looking to meet some people locally who may be able to take over the session. We are also looking at the possibility of supporting Red House Methodist Church, as during meeting with them they were very keen to host a messy play session. • After school clubs Our After School Clubs finished in July for the summer, the clubs were met with difficult conditions this year with the clubs due to the sudden closure of Red House Methodist Church where the clubs were based. The clubs moved to Red House Community Centre and St Cuthberts Church, but numbers have dropped off quite a bit. Having talked to parents the main reasons for this are that the new venues are further away from schools and the rise of Fortnite, something which is a big concern for parents. Several ideas have been formed to find ways to reinvigorate the clubs, such as purchase of new equipment and trial of school collection service, which we would work with a local mini bus company to collect children to bring to camp. Parents have 	
--	--	-----------------------------------------------------------------------------------------------------------------------------------------------------------------------------------------------------------------------------------------------------------------------------------------------------------------------------------------------------------------------------------------------------------------------------------------------------------------------------------------------------------------------------------------------------------------------------------------------------------------------------------------------------------------------------------------------------------------------------------------------------------------------------------------------------------------------------------------------------------------------------------------------------------------------------------------------------------------------------------------------------------------------------------------------------------------------------------------------------------------------------------------------------------------------------------------------------------------------------------------------------------------------------------------------------------------------------------------------------------------------------------------------------------------------------------------------------------------------------------------------------------------------------------------------------------------------------------------------------------------------------------------------------------------------------------------------------------------------------------------------------------------------------------------------------------------------------------------------------------------------------------------------------------------------------------------------------------------------------------------------------------------------------------------------------------------------------------------------------------------------------------------------------------------------------------------------------------------------------------------------------------------------------------------------------------------------------------------------------------------------------------------------------------------------------------------------------------------------------------------------------------------------------------------------------------------------------------------------------------------------------------------------------------------------------------------------------------------------------------------------------------------------------------------------------------------------------------------------------------------------------------------------------------------------------------------------------------------------------------------------------------------------------------------------------------------------	--

		<p>reacted very positively to this. In line with this, a Community Chest application has been sent to help with this, and we're very hopeful of a successful outcome. This would guarantee the clubs run for another year, with sustainability elements built in.</p> <ul style="list-style-type: none"> • Recovery college One of our dedicated volunteers who works with the project has recently attended Recovery College at Fulwell Community Centre. There she took part in completed a course where she graduated with a ceremony at the end. This new found confidence has allowed her to re-apply to do further courses at the centre, where she also helps run a coffee morning now, and she is planning to help run more sessions and activities within Redhill such as the Knit and Natter and Community Café. We are very proud of her achievements. 	
1.5	Raising Aspirations and Making Positive Changes in the Fulwell Ward (£36,445 SIB approved 05.06.17).	<p>Monitoring & Evaluation Update:</p> <p>Our project has picked up so much momentum some of the highlights include:</p> <ul style="list-style-type: none"> • Huge litter picks with over 100 people taking part 88 pupils helped by parent volunteers. • Art projects local school children designing art for the celebration of the tall ships. • The beginning of Table Tennis sessions for both the young and old at Fulwell Library. • The continuation of regular community meetings and constant consultation with local people. • A planting project on the Seafront in partnership with Sunderland City council and Northumbria Police and 12 local volunteers. • Four days at the beach which led to another beach clean with the youngsters. • Sponsorship from local businesses to help with our activities. • A planting project for Sea Road helped by local businesses. • The installation of a flag pole at Fulwell Library and a ceremony to unveil the flag pole which was attended by Sunderland City Councillors and has instilled a real sense of pride in the community. • Entrepreneur business for young people, letting young people to take a lead in running a small café. • A walk to Hartlepool from Fulwell. • The support for local children to take a geographical survey of Fulwell, this is important for young people to learn about their own surroundings. • A grant of £750 from the James Knott Foundation to help support us. • The big family camp out at Seaburn Recreation Ground was enormously 	2017/2019

		<p>successful and the feedback we received was incredible. Over 18 tents pitched with 120 campers of all ages and 250 people attending on the day to see and participate in the entertainment: Acts included, Fulwell Library Choir, Jessie Dale, Circurama, and Bojangles. Jessie Dale is appearing on the Kids the voice on ITV and it is fantastic that events like this can give young people the platform to develop their talents.</p> <ul style="list-style-type: none"> • The project has visited funders in Newcastle to discuss our project and particular around young people they had been impressed with our project and wanted to learn more about what we do, so we took Cameron one of our young volunteers and they were delighted with his work and asked to visit us again. • Whilst on the beach delivering Beach Camp we held several litter picks with young people. Young people really enjoy doing this. This culminated in a huge litter pick with Siemans with over 50 volunteers taking part in a clean sweep right along the beaches of Sunderland, the beaches really haven't looked so clean. • Friends of Fulwell helped organise a vigil and a collection after a tragedy within our community. • The feedback we receive from the community is amazing and we have their 100% support, we receive donations from the public and local businesses, what is difficult is keeping up with people's expectations. Never the less we will continue to do our best to make a positive change to our community and people's lives. • We entered Northumbria in Bloom in February and in September we had a visit from one of the judges we took her around Fulwell and she was highly impressed with the work in the area in partnership with Fulwell Community Library, we attended the ceremony and won an award we are absolutely delighted! 	
2.	Communication - Consider methods of sharing information in relation to the Area Committee, Place and People Boards and the North VCS Network	Progress Update	Date for Completion/ Implementation
2.1	Development of a North leaflet/newsletter – potential Call For Projects to deliver this.	<ul style="list-style-type: none"> • Members across the City agreed to procure a spread in Vibe Magazine to be published four times a year. This will include community information for at least one activity or event happening in each area and/or news about where and how the Area Committees have supported groups, people, organisations or activities in the area. 	2018/2019

REPORT OF NORTH AREA VOLUNTARY & COMMUNITY SECTOR NETWORK

1. Purpose of the Report

- 1.1 The report provides an update with regard to the North Area Voluntary and Community Sector Network

2. Background

- 2.1 To develop the capacity and influence of the Voluntary and Community Sector (VCS) across the City, Area Networks have been established and delegates represent each Area Network at Area Committee taking forward issues on behalf of the whole VCS in the area, reporting on area priority delivery by the VCS, and reporting back, providing a two-way flow of communication.
- 2.2 North Area Network delegates will present a report to each Area Committee meeting informing Members of activity, progress, issues and concerns of the sector.

3. North Voluntary and Community Sector Network (VCSN) Progress Report

- VCS Network will continue to work on developing and supporting the VCS re collaboration, communications, intelligence and mapping.
- VCS Reps are to give both oral and written updates to the Area Committee, as requested.
- The North VCSN has met three times since the last Area Committee in June 2018.
- The July meeting selected carried out a nomination and selection process for a new VCS Network representative to attend Area Committee on behalf of the Network and Richy Duggan of Sunderland Community Action Group was successful in gaining the nomination.
- The Network has received presentations and information in 2018/19 which have included:
 - Details of Activities and Events in the North
 - Details of NEPO Funding Opportunities
 - Details of Grantfinder Funding Opportunities
 - Presentation by Sunderland College – Student Placements within VCS organisations Programme
 - Social Isolation and Loneliness Research Feedback from Public Health
 - Citizens Advice Bureau Presentation
 - Healthwatch Presentation on Care Homes
 - Seascapes Tyne to Tees Shores and Seas presentation
 - Springboard Futures presentation

4. Recommendations

- 4.1 Members are requested
- To note the contents of the report and consider the opportunities and issues raised by the North VCSN

Contact: Ruth Oxley, Area Network Representative.
Email: ruth@snyp.co.uk - Tel No: 0191 549 1179
Graham Wharton, Area Network Representative
Email: graham.wharton@salvationarmy.org.uk - Tel No: 0191 561 8270
Richy Duggan, Area network Representative
Email: sunderlandcommunityactiongroup@hotmail.com – Tel No: 0191 556 1047

NORTH SUNDERLAND AREA COMMITTEE
15th November 2018
EXECUTIVE SUMMARY SHEET – PART I

Title of Report:

Financial Statement and proposals for further allocation of resources

Author(s):

Head of Member Support and Community Partnerships

Purpose of Report:

Area Committee has delegated budgets to allocate to specific strategic priorities identified in the Local Area Plan, with the overall aim to benefit the wider community and to attract other funding into the area. The report provides a financial statement as an updated position on progress in relation to allocating SIB, and Community Chest and presents proposals for further funding requests.

Description of Decision:

Committee are requested to:-

- (a) Note the financial statements set out in **Sections 2.1** and **3.1**.
- (b) Consider the approval of SIB funding of £11,800 for the Fulwell Community Library as set out in **Section 2.2** and **Annex 1**
- (c) Consider the approval of SIB funding of £5,000 for the CCTV Project as set out in **Section 2.2** and **Annex 1**
- (d) Approve the change to project for the existing Hylton Castle Project as set out in **Section 2.3**
- (e) Consider the approval of SIB funding of £5,000 for Community Vibe as set out in **Section 2.4**
- (f) Note the 19 Community Chest approvals supported from 2018/2019 Community Chest as set out in **Annex 3**.
- (g) Consider the Fulwell Community Chest Applications as set out in **Table 2 Annex 3**

Is the decision consistent with the Budget/Policy Framework?

Yes

Suggested reason(s) for Decision:

The Area Committee has an allocation of £328,784 for 2018/2019 from the Strategic Initiatives Budget to promote action on key priorities identified in the relevant Local Area Plan and to attract other funding into the area. Area Committee has an additional allocation of £28,020 to support Youth Activities in the area.

Alternative options to be considered and recommended to be rejected:

The circumstances are such that there are no realistic alternatives that could be considered.

Is this a "Key Decision" as defined in the Constitution? No

Is it included in the Forward Plan?

Relevant Scrutiny Committees:

15th November 2018**REPORT OF THE HEAD OF MEMBER SUPPORT AND COMMUNITY PARTNERSHIPS****Financial Statement and proposals for further allocation of resources****1. Purpose of Report**

Area Committee has delegated budgets to allocate to specific strategic priorities identified in the Local Area Plan, with the overall aim to benefit the wider community and to attract other funding into the area. The report provides a financial statement as an up date position on progress in relation to allocating Strategic Initiatives Budget (SIB), and Community Chest funding in addition to presenting proposals for further funding requests.

2 Strategic Initiatives Budget (SIB)

2.1 The table below shows the financial position of SIB for 2018/2019:

	Committee Date	Aligned	Approved	Balance
Total SIB available for 2018/2019 is £328,784 plus a further £28,020 for Youth Activities				
				£356,804
Returned Funding: Cultural Programme linked to Tall Ships 2018	05.03.18	-	(£1,512)	£358,316
Summer Holidays 2018 Project	07.06.18	-	£35,000	£323,316
Self-Supporting Community Associations Project	07.06.18		£20,000	£303,316
Returned Funding: Tall Ships Ambassadors/Trainee Bursary Project	03.10.16	-	(£3,000)	£306,316
Thompson Park House	07.04.14	-	(£1,437)	£307,753
Balance				£307,753

2.2 There are 2 applications for SIB funding presented to Area Committee for consideration detailed at **Item 6 Annex 1**

- Gas Heating at Fulwell Community Library **£11,800**
- iDefigo CCTV Pilot Project **£5,000**

- 2.3 Existing SIB Project Hylton Castle Project awarded £40,000 funding in October 2015 to support the development of a community café and interpretation project within the Castle. The project lead has requested a change to the interpretation element of the project with full details of the café refit project and interpretation element detailed at **Item 6 Annex 2**.
- 2.4 Approve £5,000 to support the inclusion of area updates within the Sunderland Community Vibe. The allocation will cover the costs of 4 editions of Community Vibe during 2019, as well as the first being delivered to households during November 2018
- 2.5 The total additional budget requested for allocation for the above projects is **£21,800** if approved the balance of SIB funding remaining would be **£285,953**

3. Community Chest

- 3.1 The table below details the Community Chest Ward starting balances for 2018/2019. **Item 6 Annex 3** shows the approvals supported between July to October 2018.

Ward	Start Balance for 2018/2019	Project approvals since April 2018	Grant Returned	Balance
Castle	£10,000	£6,630.64	£0	£3,369.36
Fulwell	£10,000	£1,614	£0	£8,386
Redhill	£10,000	£2,899	£0	£7,101
Southwick	£10,000	£5,974	£0	£4,026
St Peter's	£10,000	£7,302	£0	£2,699
Total	£50,000	£24,419.05	£0	£25,580.95

4. Recommendations

North Area Committee is requested to:-

- 4.1 Note the financial statements set out in **Sections 2.1** and **3.1**.
- 4.2. Consider the approval of SIB funding of £11,800 for the Fulwell Community Library as set out in **Section 2.2** and **Annex 1**.
- 4.3 Consider the approval of SIB funding of £5,000 for the CCTV Project as set out in **Section 2.2** and **Annex 1**.
- 4.4 Approve the change to project for the existing Hylton Castle Project as set out in **Section 2.3** and **Annex 2**.
- 4.5 Consider the approval of SIB funding of £5,000 for Community Vibe as set out in **Section 2.4**.
- 4.6 Note the 19 Community Chest approvals supported from 2018/2019 Community Chest as set out in **Annex 3**.
- 4.7 Consider the Fulwell Community Chest Applications as set out in **Table 2 Annex 3**.

Contact Officer: Vivienne Metcalfe, Sunderland North Area Community Development Lead
561 4577, vivienne.metcalfe@sunderland.gov.uk

STRATEGIC INITIATIVE BUDGET (SIB)**Application No. 1**

Funding Source	SIB
Name of Project	Gas Heating
Lead Organisation	Fulwell Community Library

Total cost of Project	Total Match Funding	Total SIB Application
£11,800	£0	£11,800
Project Duration	Start Date	End Date
1 month	December 2018	December 2018

The Project

In February 2017 residents of Fulwell attended a Library Workshop led by Sunderland City Council to discuss proposals for the library service from 1st April 2017.

Opportunities were provided for the development of proposals for a community led library delivery in Fulwell, with support from Sunderland City Council. To achieve the development of a community led library Fulwell Community Library Community Interest Company was formed and registered and a management committee established.

A full Business Plan was developed and accepted by Sunderland City Council and on the 29th of July 2017 the Fulwell Community Library was formally opened.

In November 2017 Sunderland City Council North Area Committee supported Fulwell Library Improvements for disabled toilet installation, new doors and porch at a total of £24,446

The Community Library has now operated successfully for over a year and has 62 volunteers helping to deliver the service. The following services and activities are offered:

- A community café is now established and welcoming visitors to the venue.
- Access to computers is available for those carrying out employment searches.
- Volunteers are providing a children story time session within the venue.
- A local art group is exhibiting in the library and any sales achieved will result in a percentage donation to the library.
- The Community Library has joined the Sea Road and Fulwell Traders group in order to establish links with local traders and support the development of the local area.
- The Community Library greatly supports the Fulwell Raising Aspirations Project through the Friends of Fulwell and the library volunteers support delivery of the Friends of Fulwell Project and jointly we were recently successful with a Northumbria in Bloom award.
- A Community Choir is established and meets on a weekly basis and has 70 members.
- A local Ukulele group meet in the library and have 20 members.
- Craft sessions are delivered to the local community.
- A monthly Quiz session is held.
- Regular events such as afternoon teas, drama productions, talks, I-pad sessions, craft, art and beetle drives are held among other activities.

The services and activities are accessed by all members of the community from young to old. The library has become a focal point for those that are socially isolated by providing companionship and a safe, accessible and welcoming space for those with disabilities.

Since opening the library has achieved the following:

- Over 37,000 visitors this now being verified by installing a door counter which is averaging over 700 visitors per week.
- 62 volunteers a number of who have advised that by volunteering we are addressing their social isolation and by volunteering they are achieving positive health outcomes.
- Feedback from numerous people including disabled who say that the library is becoming a lifeline as they found it difficult to go out during day and evening because of lack of facilities. These people attend almost every function we offer. After the play “The Desert Queen” they told us they hadn’t attended a play for so long due to lack of disabled access and bought tickets for all our forthcoming functions.
- 12 groups hiring the library space including local councillors, a local group meeting monthly and a holistic health professional.
- Funding and Donations provided including:
 - Furniture and Kitchen Equipment.
 - Volunteering Decorating Services.
 - Bright Ideas Fund of £12,960 to establish aims for the library and hire professionals to meet these aims.
 - Awards for All £9600 to replace front door and roller door.
 - Over 7000 book donations as well as 600 jigsaws for free loan
 - £2,000 in cash donations from local people to help our funds.
 - Income from community café which is around £85 per day although this is with the present 22 hours per week opening.
 - Lockers from Rolls Royce.
 - Small grants funding from 7 sources totalling £6000.
 - Money for an architect to move the library forward £2400 and get planning permission for a large heritage grant.

In order to build on the success of the community library, the improvements to date and in order to reduce costs Fulwell Community Library CIC were successful in receiving a community energy audit through North Area Committee SIB funding.

The energy audit identified that the installation of a heating system would contribute to making the centre as energy efficient as possible. Following the energy audit the library were told that replacing the lighting for LED would save £1200 per year and this has now been done, We also identified heat loss through the 16 skylights although this was not mentioned in the Energy Audit placing polycarbonate shields over these skylights has led to much less heat loss and a warmer building in winter. These allowed us to start the heating at 2am where previously it was switched on at midnight saving on bills.

This application is to cover the replacement of the heating system in order to ensure that we address our energy efficiency and reduce costs on heating which could be invested into more services and activities for the local community.

Recommendation - Approve

The North Area People Board recommend approval of the application which delivers to the Health & Wellbeing, Activities for Young People, and VCS Capacity Building Priorities.

Application No. 2

Funding Source	SIB
Name of Project	iDefigo CCTV Pilot
Lead Organisation	Sunderland City Council

Total cost of Project	Total Match Funding	Total SIB Application
£5,000	£0	£5,000
Project Duration	Start Date	End Date
4 months	1.12.18	31.3.19

The Project

As part of the area priority, Environment and Green Space Sunderland North Place Board have discussed the potential of iDefigo CCTV Units in the North and as such wish to progress a pilot project to inform the potential of a larger project in the future

The project will provide CCTV equipment capable of capturing images of fly-tipping, this is a trial and upon completion findings will be assessed for further project development. Discussions will be held with members and Place Management to identify areas for the pilot delivery, during deployment assessment will be carried to assess effectiveness of equipment and location in order to inform the potential for a larger scale project across the North.

Recommendation - Approve

The North Area Place Board recommend approval of the application which delivers to the Environment and Green Space Priority.

Hylton Castle Project – North Area Board SIB funding breakdown and proposed revisions, October 2018.

The Hylton castle Project would like to request the North Area Committee's approval to some slight alterations to how their SIB funding will be spent at the castle.

Original award:

- £40,000 awarded October 2015
- The £40,000 contribution from the North Area Committee will be allocated to a specific area of the project, i.e. the fit out of the café and other areas of the ground floor which will be accessed on a regular basis, by the local community and visitors from across the city. This will also allow for an opportunity for the area committee's contribution to be formally acknowledged in a public area of the building following the completion of the capital development. Works in this area will include the use of innovative design in order to make use of the space available including a detailed model of the castle that will enable children, families and visitors to look into the world of the castle at a particular point in time, enabling them to understand the hierarchy of the occupants and the differing functions and status of each floor of the castle. Other works on the ground floor will include a suspended timeline in the café area which will include images, illustrations and key dates and will allow visitors to discover the historical facts of the castle. Other elements will include café fit out and seating for visitors, an AV screen for details of events and activities on going at the castle and tactile orientation for plans and directions.
- Finance Breakdown:

<i>a</i>	<i>Café Fit Out</i>	<i>30,000</i>
<i>b</i>	<i>Physical Castle Model and Plinth</i>	<i>9,000</i>
<i>c</i>	<i>AV What's On Screen</i>	<i>1,100</i>

Schedule of proposed changes

Item	Agreed SIB contribution	Proposed change / No change
a Café Fit Out	£30,000	No change – detail below

Hylton Castle café is now fully designed and specified. The following budget includes a fully priced element (item 1) and budget estimates (items 2 – 16). Items 2 – 16 are currently the subject of an SCC procurement exercise.

Item	Detail	Cost
1	*Structure, M & E, walls, partitions, units etc. (as per separate breakdown)	£19,834.89
2	Catering dishwasher Hobart Ecomax Dishwasher F504 with Install With installation Nisbett price	£2,232
3	Panini machines x2 https://www.nisbets.co.uk/buffalo-large-single-contact-grill-flat-plates/I519 Nisbett price	£510, £255 each
4	Water boiler Lincat Automatic Water Boiler EB4FX Power: 4.5kW. 9Ltr Capacity with FilterFlow Nisbett price	£450
5	Coffee machine Fracino Contempo Espresso Coffee Machine Automatic 3 Group CON3E 7.5kW Nisbett price	£2,813.69
6	Under counter fridge, under counter freezer Polar Stainless Steel Under Counter Freezer 140Ltr 150W. Total usable capacity: 78 Ltr. R600a Polar Stainless Steel Under Counter Freezer 140Ltr 150W. Total usable capacity: 78 Ltr. R600a Nisbett prices	£328 £336
7	Free-standing self-service chilled display cabinet Foster 'Grab & Go' Self-Serve Display Chiller 600mm FDC600 20-105 1.07kW. Width: 600mm. -1°C to 7°C Nisbett price	£2,802
8	Crock pot Buffalo Graphite Grey Soup Kettle Capacity: 10Ltr Nisbett price	£48
9	Storage – Stainless steel basket trolley Craven Stainless Steel Dishwasher Basket Trolley Material: Stainless steel. Size: 1621(H) x 626(W) x 588(D)mm. Capacity: 7 baskets (500x500mm) Nisbett price	£320
10	Dishwasher trays (x 7 or 8) https://www.nisbets.co.uk/hobart-ecomax-dishwasher-f504s/p_dw255 Nisbett price	£102

11	Chairs	Design to be finalised, 50 chairs @ say £70 each	£3,500
12	Tables	Design In Principle agreed with BBA. Stackable square tables required. Approx. £40 each http://www.kirkhouse.co.uk/premium-square-table.html	£480
13	Crockery, cutlery etc.	100 sets of plates, bowls, mugs cups, 25 milk jugs, mugs, cups etc. estimated https://www.nisbets.co.uk/tableware-and-bar-supplies/crockery/all-churchill-crockery/_/a33-3	£750
14	Catering Microwave	MenuMaster Large Capacity Microwave RFS518TS Power output: 1.8kW.13A. Capacity: 34Ltr. Programmable Nisbett quoted price	£561
15	Till system	Eposnow tablet based system Recent quote (Sunderland Museum and WG shop)	£1199
16	High chairs	IKEA or similar (estimate £25 each)	£50
Total			£36,316.58

(*in main contract)

Item	Agreed SIB contribution	Proposed change / No change
b Physical castle model and plinth	£9,000	The model is not now being commissioned, funding still required for interpretation – detail below

Interpretation in the building will not now include the model and plinth. Interpretation of the castle (and gatehouse) will still be delivered on film, via fixed interpretation, self-guided trails and a heritage App.

There are several reasons for this change. Space is at a premium throughout the building and permanently devoting space to a model and plinth reduces flexibility and usability. The messages that were to be conveyed via the model will still be delivered but differently.

We are requesting that the North Area Committee maintains this level of funding towards the interpretation.

Item	Agreed SIB contribution	Proposed change / No change
c AV 'What's On' screen	£1,100	No change

Additional explanatory notes to attached documents:

Interpretation budget

The physical interpretation fit-out works (supplying and installing the information stands, screens etc) have come in over budget and therefore we sought permission from HLF to allocate contingency to this budget. The £9,723.49 shortfall identified on the statement will now be covered by this.

Café/ Servery Bill Extraction
Hylton Castle
Rev B

Item	Quantity	Unit	Rate	Total
<u>Walls</u>				
Whiterock Hygenic Wall Lining	33.34	m2	£36.08	£1,202.91
Egger Laminate Sheet	1.5	m2	£163.80	£245.70
Plasterboard	23.5	m2	£14.26	£335.11
Proprietary partitions to beverage bay	2	nr	£87.75	£175.50
Polished concrete wall upstand to servery (PS)	1	Item	£1,060.00	£1,060.00
<u>Floors</u>				
Vinyl Sheeting Polyflor	17.8	m2	£29.19	£519.58
Coved skirting	12	m	£14.63	£175.56
Rubber latex	1.5	m2	£7.61	£11.42
Plastics cover strip	6.5	m	£5.85	£38.03
<u>Servery/ Café Units</u>				
Retail display unit and flap/ jib to café and severy (PS)	1	Item	£2,120.00	£2,120.00
Stainless steel base unit	3	nr	£117.00	£351.00
600 long base unit	1	nr	£131.62	£131.62
500 long base unit	1	nr	£136.50	£136.50
1000 long base unit	1	nr	£146.25	£146.25
Sink unit	1	nr	£146.25	£146.25
Drawer unit	1	nr	£117.00	£117.00
Wall unit including pelmet	2	nr	£204.74	£409.48
<u>Worktops</u>				
Worktops	4	m	£73.12	£292.48

Worktops	2	m	£87.75	£175.50
Worktops	2	nr	£34.12	£68.24

Fixtures and Fittings

Armitage Shanks Sink with Pedestal	1	nr	£195.05	£195.05
Classic 70 Armitage Shank Stainless Steel sink	1	nr	£314.79	£314.79
Glass floor to well enclosure	1	nr	£6,972.81	£6,972.81

M&E

Dishwasher supply	1	nr	£181.50	£181.50
Coffee machine supply	1	nr	£145.75	£145.75
Water boiler supply	1	nr	£145.75	£145.75
USB floor boxes (budget)	3	nr	£150.00	£450.00
Illumination to well enclosure (budget	1	nr	£500.00	£500.00

Sub-Total	£16,763.77
-----------	------------

+3.2% Uplift	£536.44
--------------	---------

+15.12% Prelims	£2,534.68
-----------------	-----------

Total	£19,834.89
--------------	-------------------

Thornton-Firkin LLP
October 2018
801.80

OTHER PHYSICAL WORKS

Budget Heading	BASELINE HLF Stage 2 Approval	REVISED BASELINE - Summer 2017	Current Cost Forecast	Notes
Café Fit Out	30,000.00	0.00	0.00	
Access Improvements	3,000.00	0.00	0.00	
Content Creation	20,000.00	20,000.00	20,000.00	
Interpretation Works	139,633.00	139,633.00	149,356.49	
				Note: this is too low. Additional costs already identified
Fixtures, Fittings and Equipment		41,869.00	41,869.00	
Sub-total	192,633.00	201,502.00	211,225.49	

Interpretation Works	Budget at HLF Stage 2	REVISED BASELINE - Summer 2017	Current Cost Forecast	Notes
Site wide and Ground Floor (incl Prelims and Contingency)	43,736.00	43,736.00	Incl in detail below	
First Floor (incl Prelims and Contingency)	27,610.00	27,610.00	Incl in detail below	
Second Floor (incl Prelims and Contingency)	30,789.00	30,789.00	Incl in detail below	
External (incl Prelims and Contingency)	2,750.00	2,750.00	Incl in detail below	
Redman Fee	34,748.00	34,748.00	34,748.00	Redman fee
Ground floor- projection onto wall above toilets	Incl	Incl		Previously 4800
Ground Floor - AV on Servery wall	Incl	Incl		Previously 2450
ground Floor - stair-mounted projector	Incl	Incl		Previously 3900
First Floor - projector	Incl	Incl		Previously 4950
Second Floor - projectors x 2	Incl	Incl		Previously 9700
Touch screen unit - location tba	Incl	Incl		Previously 2150
	Incl	Incl		Previously 9000
Second Floor - flexible exhibition system				
Second Floor - hanging panel system	Incl	Incl		Previously 1000
Second Floor - Glass installation (excludes actual artistic commission)	Incl	Incl		Previously 3000
Evacuation lectern systems x 3	Incl	Incl		Previously 9000
Room with a View	Incl	Incl		Previously 6000
Graphic banner to stairwell	Incl	Incl		Previously 4000
Graphics production & illustration	Incl	Incl		Previously 7735
	Incl	Incl		
Illustration costs			Incl in Content Creation	
Entrance sign	Incl	Incl		Previously 1860
Elmwood Adjusted Tender Return	N/A	N/A	85,608.49	
App	Incl	Incl	14,000.00	
National Glass Centre Commission	Incl	Incl	15,000.00	
Sub-total	139,633.00	139,633.00	149,356.49	-9,723.49

Possible VE	0.00
-------------	------

COMMUNITY CHEST 2018/2019 NORTH AREA - PROJECTS APPROVED – July to October 2018

Ward	Project	Ward Allocation 2018/2019	Project Approvals	Previous Approvals	Grants Returned (since April 2018)	Balance Remaining
Castle	Castle Raising Aspirations (SNCBC) - As part of the Raising Aspirations Project a Parent/ Carer and Toddler Group will be established at Castletown CA		£522.44			
	Castle Town Scouts - Renewal of main doors and roller shutter door to the Scout Building		£1,200			
	SNCBC - St Bede's Church – As part of the Raising Aspirations Project a coffee afternoon will be established at St. Bedes Church to engage with older people at risk of social isolation.		£830			
	SNCBC - Battle re-enactment – Towards the cost of banners, flags, a second marquee, enclosures etc for the Battle re - enactment		£1,500			
	Hylton Castle Primary School – Purchase of a range of play equipment		£1,354.20			
	Castletown Community Association - Towards the cost of road closures for Remembrance Day in Castletown		£424			
	Total	£10,000	£5,830.64	£800	£0	£3,369.36
Fulwell	Fulwell Community Association – To deliver New Iyengar classes at Fulwell Community Centre		£114.38			
	Redby Childminders Group – Towards various trips over the school summer holidays. Jointly funded with St Peter's Ward		£500			
	North East Bus Preservation Trust Ltd - To purchase printed plaques, and provision of a portaloo for event		£500			
	Total	£10,000	£1,114.38	£500	£0	£8,385.62

Redhill	All About You North East CIC – The project will deliver two After School Clubs per week in the Redhill Ward.		£2,899			
		£10,000	£2,899	£0	£0	£7,101
Southwick	MAC Trust – Towards the Summer Streets Festival 2018		£995			
	Bizzy B's - Grant towards events throughout the Summer holidays		£950			
	Grace House – Contribution towards the Grace House family fun day		£1,473.60			
	Southwick Community Primary School – Contribution towards the annual Community Lantern Festival including 2 weeks of community workshops		£1,554.93			
	Thompson Park Community Association – To support repairs to the flooring at the centre as a result of the water damaged		£1,000			
	Total	£10,000	£5,973.53	£0	£0	£4,026.47
St Peter's	Redby Community Association - To support the refurbishment of the Community Association		£1,603			
	Redby Childminders Group - To offer a series of trips over the school summer holidays. Jointly funded with Fulwell Ward		£500			
	St Peter's Church - To deliver a Flower & Craft Festival		£1,939			
	Assign Jazz - Grant towards performance of jazz music		£142			
	Total	£10,000	£4,184	£3,117.50	£0	£2,698.50
Totals		£50,000	£20,001.55	£4,417.50	£0	£25,580.95

COMMUNITY CHEST 2018/2019 NORTH AREA - PROJECTS to be considered NOVEMBER 2018

Table 2.

Ward	Project	Total Cost of Project	Total Requested	Further Information
Fulwell	Housing Care 21, Cuthbertson Court – Christmas lunch for 45 residents in December at Martino's in Seaburn	£675	£500	<p>Further information was requested from the applicant to ensure that this application delivered value for money for public funds and reached as many beneficiaries as possible within the ward. The original application advised residents would contribute £10 per person to a meal that was anticipated to cost £22 the quote has come in at £15 per person, however, the resident contribution has reduced to less than £4 with no contribution from Housing and Care 21 (the applicant).</p> <p>Ward Members have considered the application and there are 2 separate proposals to consider at November Area Committee:</p> <ul style="list-style-type: none"> • Award Full Amount of £500 • Award £350
Fulwell	Hands On North East CIC Hands On NE CIC are a community organisation providing low cost affordable quality entertainment to people who tend to be excluded by their disability age or other lack of mobility in a local venue. This project will deliver Christmas evening entertainment, on 2 occasions, at Fulwell Community Library with professional actors and lighting to an audience of approximately 50 people per session including wheelchair users.	£2,252	£1,252	<p>Match funding will be from ticket sales and also from Hands on NE CIC as a Community Interest Company re-invest.</p> <p>Ward members have considered the application and there are 2 agreements for approval and one withheld therefore Area Committee are asked to consider:</p> <ul style="list-style-type: none"> • Award Full Amount of £1,252 • Reject the Application

Current Planning Applications(North)

Between 01/10/2018 and 30/10/2018

Reference	Address	Proposal	Date Valid	Target Date for Decision
18/01773/FUL	Evans Halshaw Renault Junction Of Wessington Way And Castletown Road Sunderland SR5 3NZ	Erection of 5no spotlights mounted on 3m high steel lighting masts	08/10/2018	03/12/2018
18/01774/ADV	Evans Halshaw Renault Junction Of Wessington Way And Castletown Road Sunderland SR5 3NZ	Erection of various signage to building and within the site.	08/10/2018	03/12/2018
18/01752/ADV	60 Sea Road Sunderland SR6 9BX	Replacement of existing signage	03/10/2018	28/11/2018
18/01833/FUL	13 Queens Avenue Seaburn Sunderland SR6 8DL	Erection of single storey extensions to front and rear and two storey side extension.	17/10/2018	12/12/2018
18/01776/FUL	The Manager Sunderland Marriott Hotel Queens Parade Whitburn Road Sunderland SR6 8DB	Conversion of 2 storey car park into 27 hotel bedrooms.	22/10/2018	17/12/2018
18/01817/FUL	43 Seafields Sunderland SR6 8PQ	Erection of a single storey extension to rear and a 1.8 metre boundary fence.	26/10/2018	21/12/2018

Reference	Address	Proposal	Date Valid	Target Date for Decision
18/01772/ADV	B & M Store1 Sunderland Retail ParkSunderlandSR6 0BW	Installation of 1x internally illuminated flex box and various non illuminated signage.	08/10/2018	03/12/2018
18/01845/SUB	40 Park AvenueRokerSunderlandSR6 9DJ	Extension to rear decking and erection of 2.1m close boarded fence.	16/10/2018	11/12/2018
18/01787/FUL	9 Melvyn GardensRokerSunderlandSR6 9LF	Replacement of conservatory with single storey kitchen extension.	19/10/2018	14/12/2018
18/01780/FUL	32 Westcliffe RoadSunderlandSR6 9NP	Erection of single storey side extension.	23/10/2018	18/12/2018
18/01756/FUL	22 Warwick StreetMonkwearmouthSunderlan dSR5 1DL	Erection of dormers to front and rear of property.	02/10/2018	27/11/2018
18/01830/PRI	11 Broomshields CloseSunderlandSR5 1SJ	Erection of a single storey rear extension. (Extends 4m from the original dwelling, 3.7m in height and 2.5m to the eaves).	10/10/2018	21/11/2018
18/01643/FUL	Unit 8West Quay RoadSunderland Enterprise ParkSunderland	Erection of 1no single-storey modular pre-fabricated office building.	16/10/2018	11/12/2018